

NEW

FLEX SPACE

FOR LEASE



 111-133 W Lions Way, Hayden, ID 83835

Offered at
\$1.10 PSF, NNN

NNN Estimated
at \$0.18 PSF

THIS BRAND NEW COMMERCIAL

"flex" building is 12,000 sqft. All units include a private office area with upgraded lighting, electric heat and air conditioning, ADA bathroom, open insulated warehouse with gas stubbed for heat, LED lighting, 200 Amp 208 3-Phase power, 10x14 foot roll up doors, windows for natural light. Ceiling height is 18ft. We can combine the suites for a larger user. Abundant parking with easy access to Highway 95. Excellent location in Hayden Idaho. Zoned Commercial. Many other upgrades on the exterior and interior.

Units 111-133 are 3,000 sf each, available Fall 2024.

 **CRAIG HUNTER**

208.929.2929
hunter@ccim.net



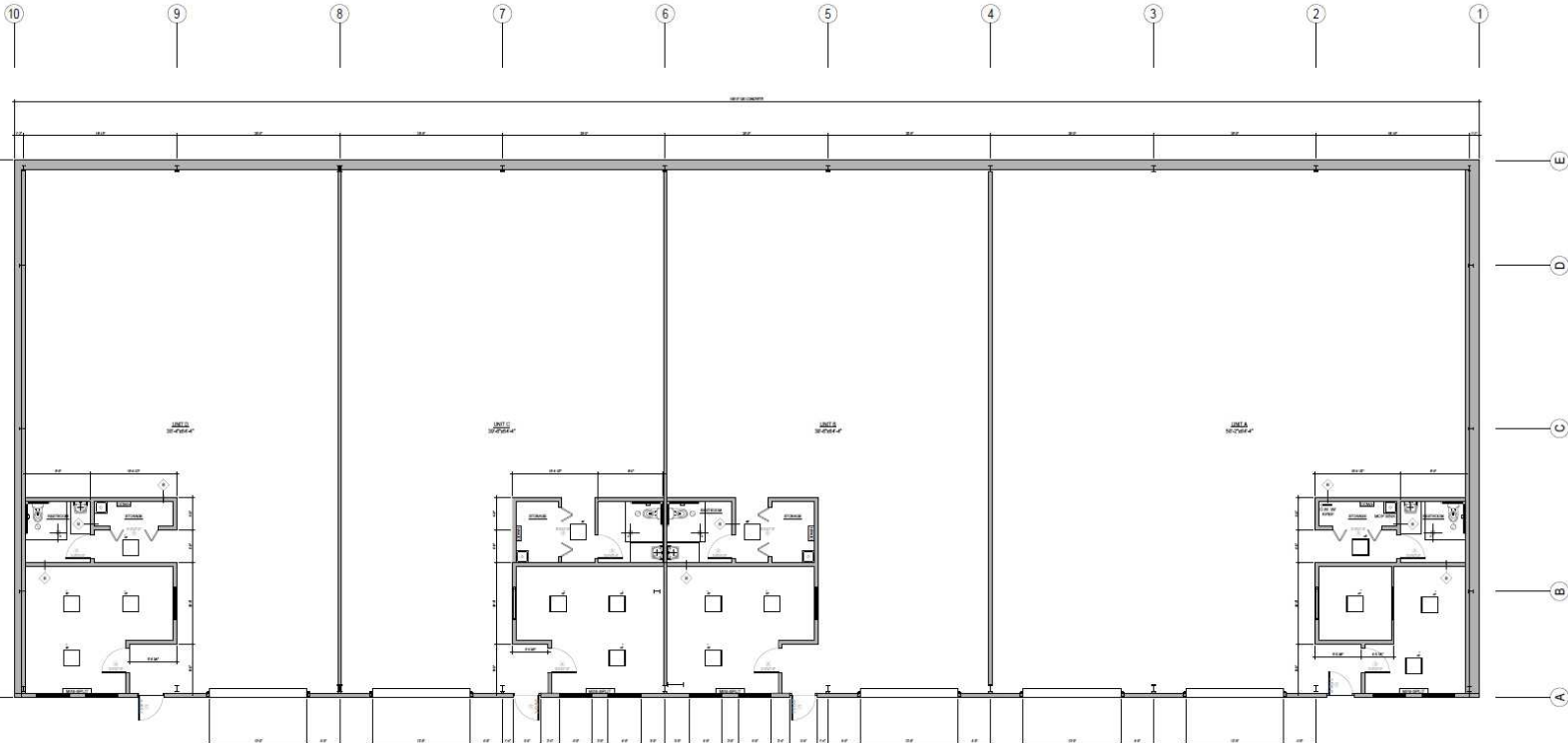
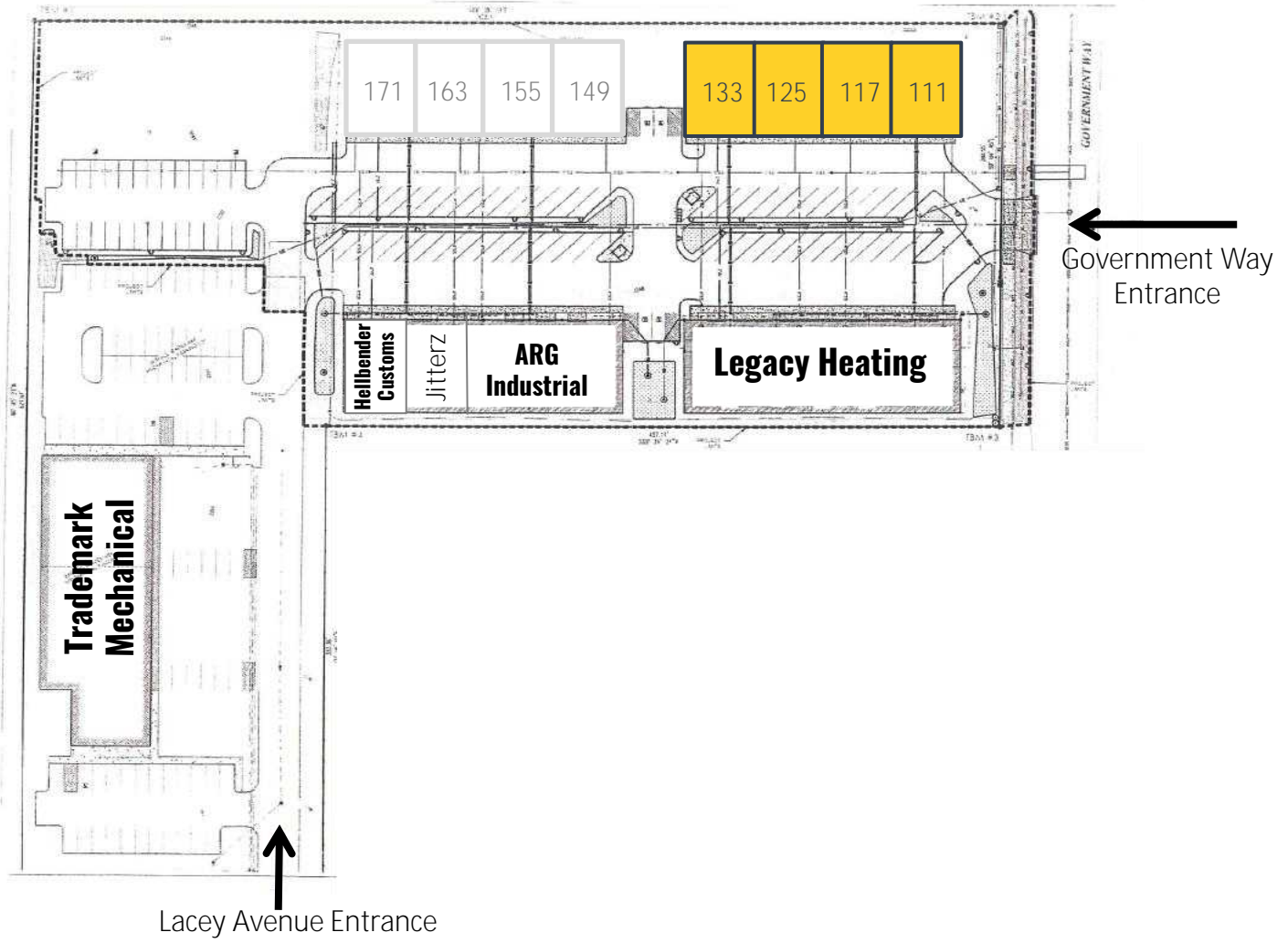
CCIMTEAM.COM

**KIEMLE
HAGOOD**

1579 Riverstone Drive, #102
Coeur d'Alene, ID 83814



W Lions Way, Hayden, ID 83835





HAYDEN
EQUIPMENT

JUDY'S GREENHOUSE

Wyoming Avenue

Ziggy's

PITTERI
ESPRESSO

PRECISION
GUTTERS & ROOFING

Habitat for Humanity
ReStore

Eagle Insulation



Reliable Towing

Trademark
Heating & Cooling

40 Equipment Rentals

Lacey Avenue

Bobby Combs
RV Centers

WESTERN STATES **CAT**

Government Way

ANTHEM FRIENDS