

**FOR SALE**

3120 3RD AVE W, SEATTLE WA 98119

**Queen Anne Owner/User Opportunity**



Investment Contact:

DAN FOSTER 206.445.7662 | [dfoster@orioncp.com](mailto:dfoster@orioncp.com)

| OFFERING MEMORANDUM



# Investment Contact

Dan Foster  
206.445.7662  
dfoster@orioncp.com

**ORION**  
COMMERCIAL PARTNERS  
1218 Third Avenue  
Suite 2200  
Seattle, WA 98101  
www.orioncp.com



## Contents

Investment Summary .....	3
Property Overview .....	5
Market Overview .....	11

2



# Investment Summary

PRICE	\$995,000	BUILDING SIZE	2,340 SF
PRICE PER SF	\$425	YEAR BUILT	1964
PRICE PER SF LAND	\$323	LAND SIZE	3,080 SF
ADDRESS	3120 3RD AVE W, SEATTLE WA 98119	ZONING	M10-37 LR3 (M)



# Investment Summary | EXECUTIVE SUMMARY



ORION Commercial Partners is pleased to offer for sale on a owner/user opportunity, located at 3120 3rd Ave W, in the prime Queen Anne neighborhood of Seattle, Washington.

The property is conveniently located in Queen Anne borders one of the fastest growing employment hubs, South Lake Union; home to several biotech firms as well as Amazon and Google Campuses.

---

**Perfect opportunity for professional services, attorneys, CPAs, insurance office, dental, vision, or light medical offices. Conveniently located in Seattle Pacific University and Fremont neighborhood with lots of foot and vehicle traffic.**

---



# Property Overview



Exceptional Location



Very Walkable



Close to Transit



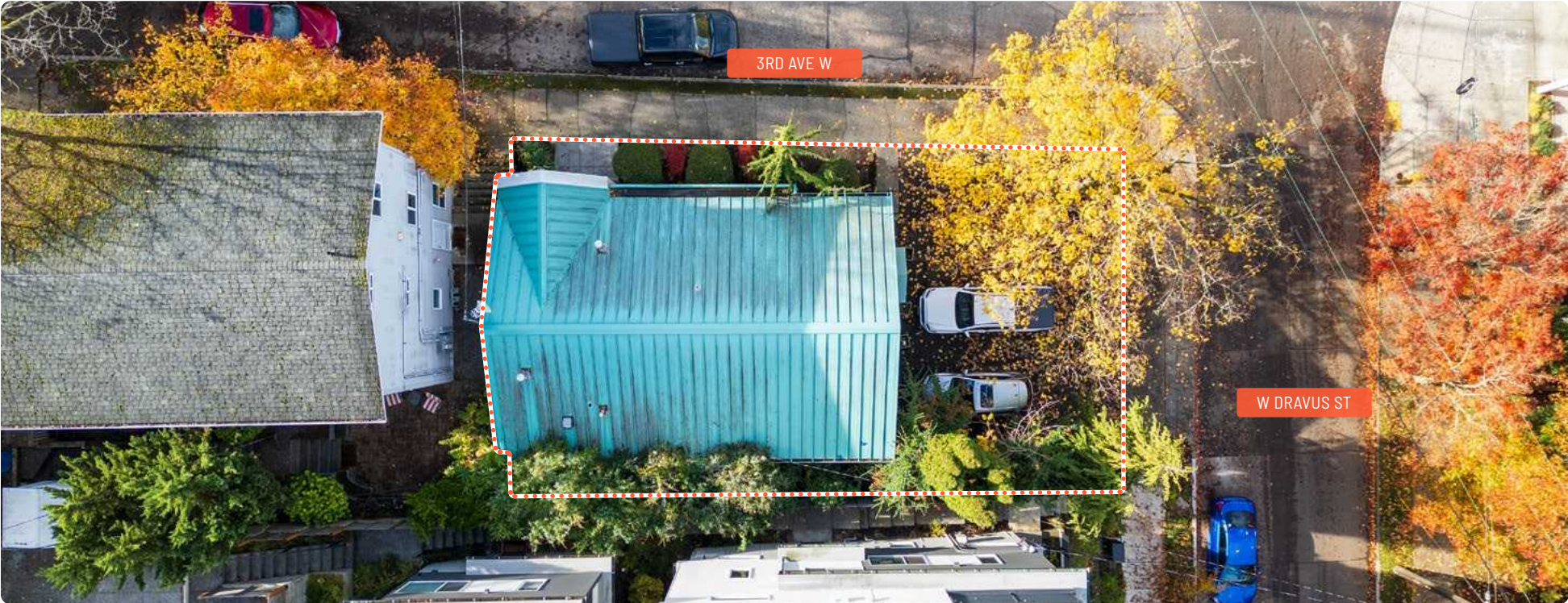
Centrally Located to Tourist Attractions



Proximity to Employment

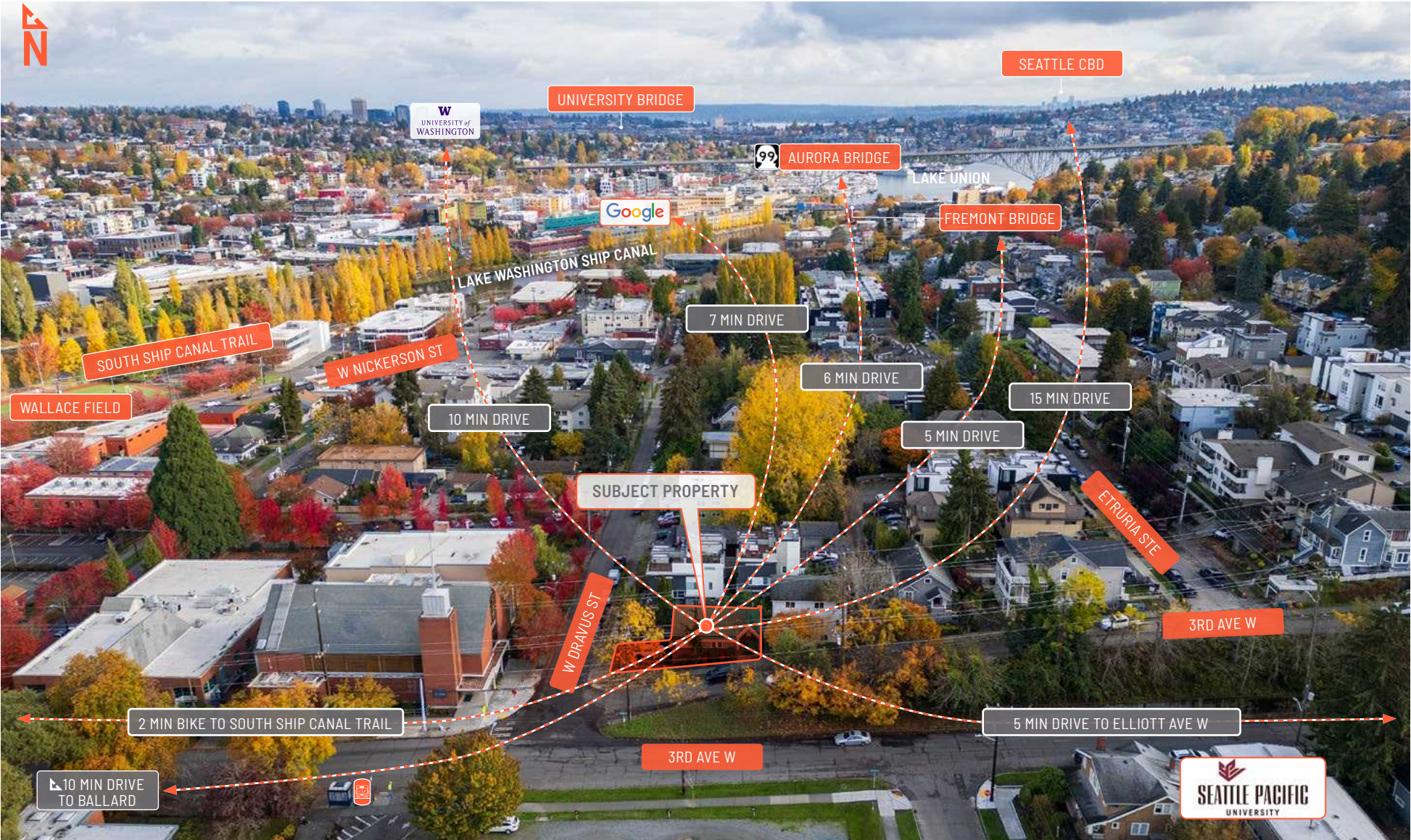


Proximity to SPU



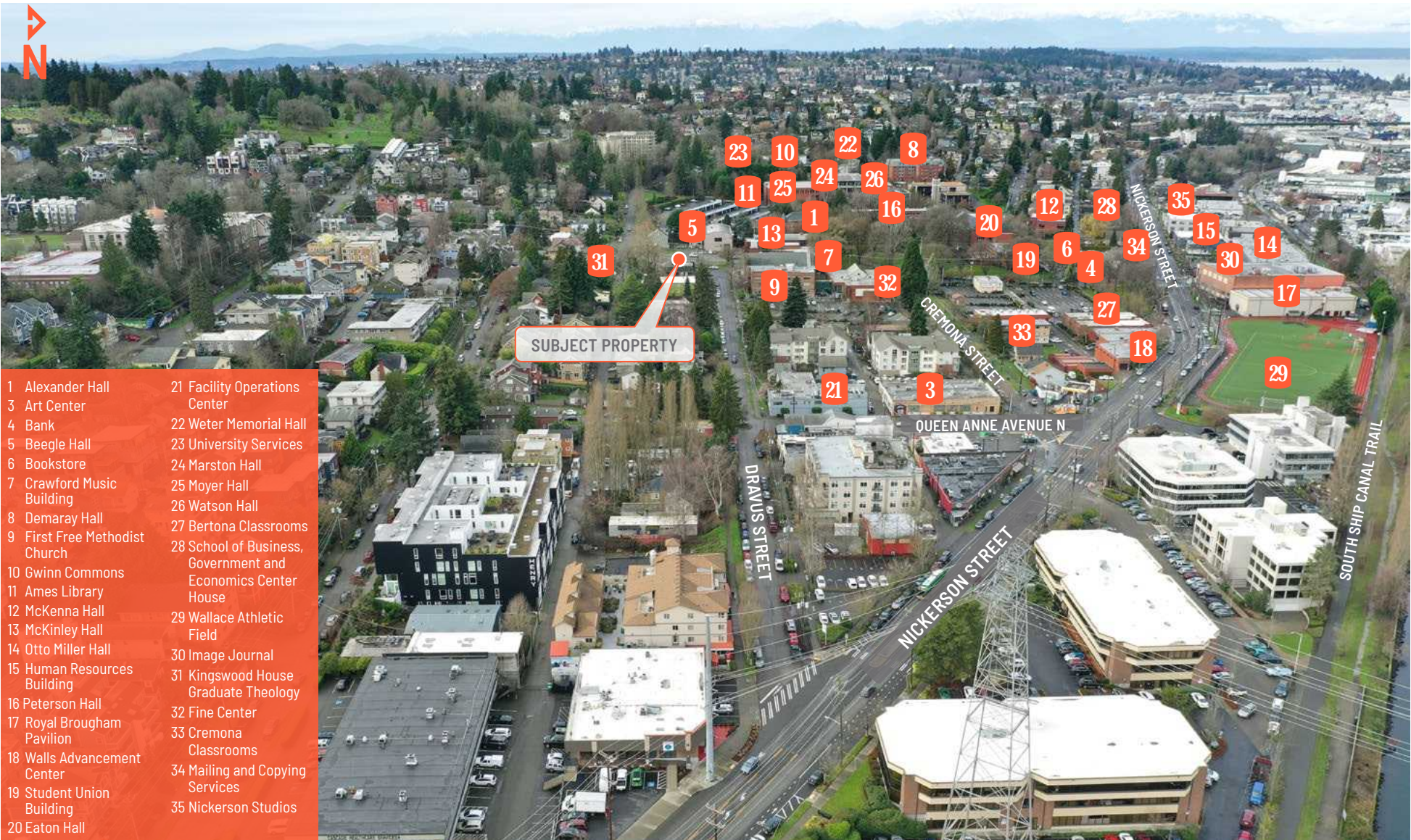


# Property Overview | COMMUTER AERIAL





# Property Overview | SPU CAMPUS



- 1 Alexander Hall
- 3 Art Center
- 4 Bank
- 5 Beegle Hall
- 6 Bookstore
- 7 Crawford Music Building
- 8 Demaray Hall
- 9 First Free Methodist Church
- 10 Gwinn Commons
- 11 Ames Library
- 12 McKenna Hall
- 13 McKinley Hall
- 14 Otto Miller Hall
- 15 Human Resources Building
- 16 Peterson Hall
- 17 Royal Brougham Pavilion
- 18 Walls Advancement Center
- 19 Student Union Building
- 20 Eaton Hall
- 21 Facility Operations Center
- 22 Weter Memorial Hall
- 23 University Services
- 24 Marston Hall
- 25 Moyer Hall
- 26 Watson Hall
- 27 Bertona Classrooms
- 28 School of Business, Government and Economics Center House
- 29 Wallace Athletic Field
- 30 Image Journal
- 31 Kingswood House Graduate Theology
- 32 Fine Center
- 33 Cremona Classrooms
- 34 Mailing and Copying Services
- 35 Nickerson Studios



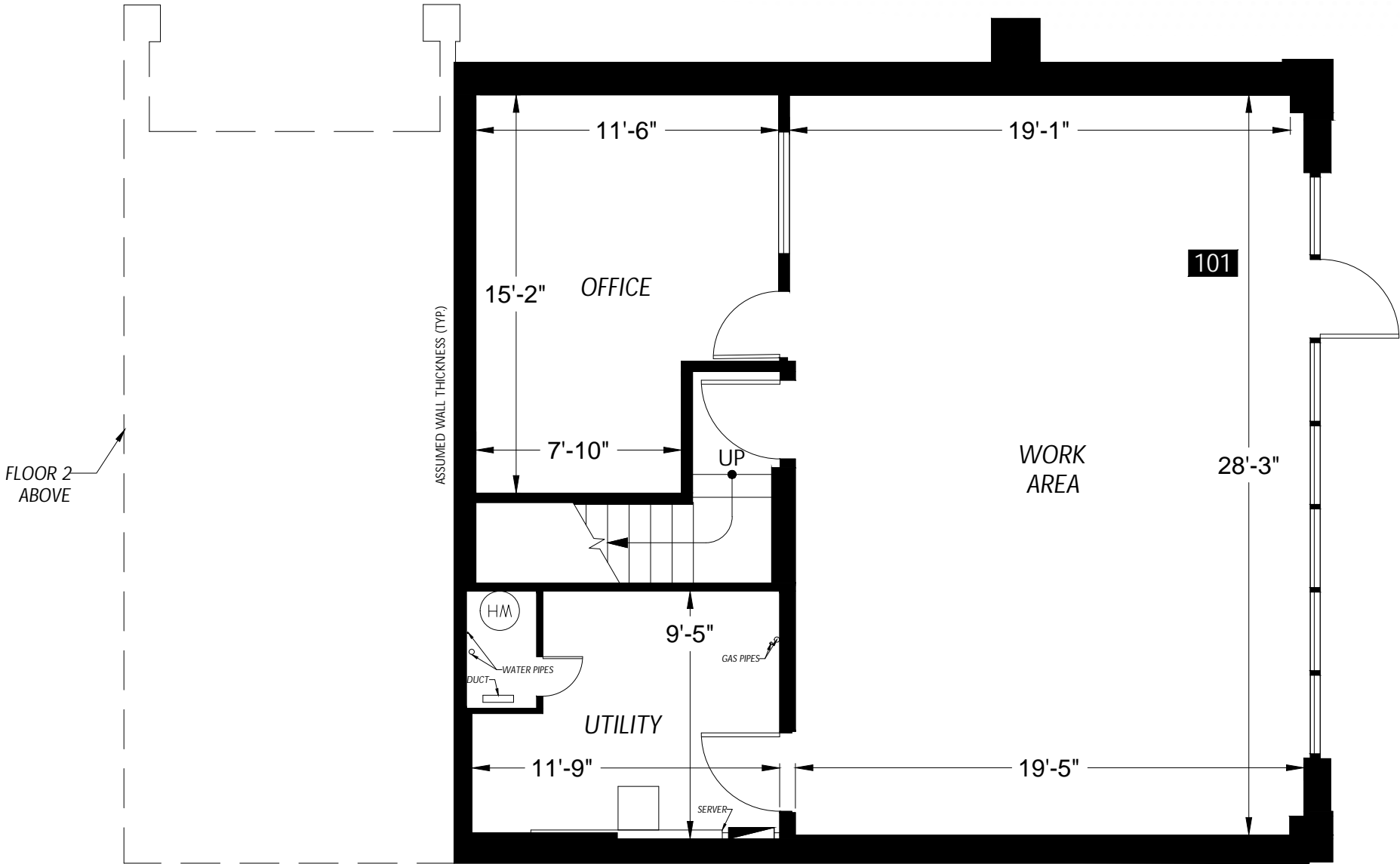
# Property Overview | PROPERTY PHOTOS



8

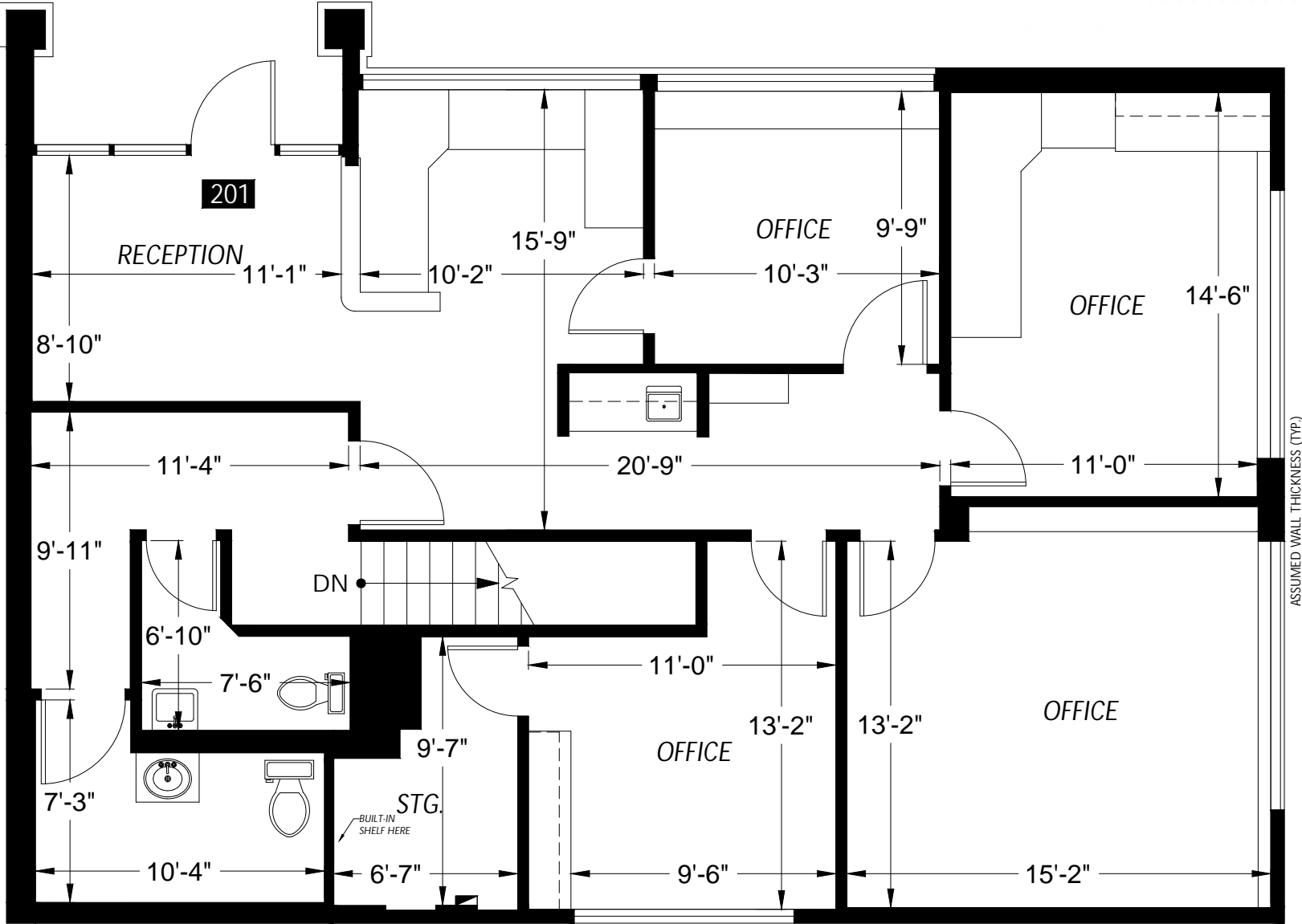


# Property Overview | FLOOR PLAN: FIRST FLOOR





# Property Overview | FLOOR PLAN: SECOND FLOOR





# Market Overview | ABOUT QUEEN ANNE NEIGHBORHOOD



## Eat

Linger at espresso expert La Marzocco's (472 First Ave N) shared space for fresh coffee from rotating roasters-in-residence and beats from local radio darling KEXP. Delectable twice-baked almond croissants from Le Rêve (1805 Queen Anne Ave N, Ste 100) will vie with local favorite Molly Moon's (321 W Galer St) salted caramel ice cream for the title of sweetest treat of the day. For impeccable Mediterranean small plates, dine at Grappa (2 Boston St), or try Toulouse Petit (601 Queen Anne Ave N) for some zesty fare with Cajun flair.



## Shop

The vibrant Queen Anne Farmers Market (Queen Anne Ave N and W Crockett St) lets you snack from top-notch food and produce stands while taking in live music and kids' activities. Nearby, stop into Queen Anne Book Company (1811 Queen Anne Ave N) to grab the latest local bestseller, or find some high-quality home goods at Stuhlbergs (1801 Queen Anne Ave N). Online favorite Not Monday's (1622 Queen Anne Ave N) Seattle location has limited hours, but the luxury cashmere is worth the effort.



## Play

Seattle Center (305 Harrison St) abounds with family-friendly highlights, from the can't-miss-it Space Needle (400 Broad St) to the Museum of Pop Culture (325 Fifth Ave N)—aka MoPOP—with exhibits on Pearl Jam and Nirvana and even a Science Fiction and Fantasy Hall of Fame. Movie buffs will love the Seattle International Film Festival (May-June; various locations), the largest of its kind in the US.



## Explore

With its sweeping views of Lake Union, Elliott Bay, the downtown Seattle skyline, and more, Queen Anne is a premier place for viewpoints and parks. The hill is dotted with small green spaces, playing fields, and even historic staircases for playing, picnicking, and traveling around Queen Anne. Bring your camera to Kerry Park (211 W Highland Dr) at sunset for the quintessential Seattle view, accented by Mount Rainier.

This hilly neighborhood is filled with iconic sights, lovely views, cool boutiques, and family-friendly adventures. Queen Anne sits on the highest hill in the city and became a popular spot for the city's early economic and cultural elite to build their mansions, and the name derives from the architectural style typical of many of the early homes. Now a mix of commercial hubs and residential streets; Queen Anne is an affluent neighborhood and geographic feature in Seattle, northwest of downtown.

Queen Anne is bounded on the north by the Fremont Cut of the Lake Washington Ship Canal, beyond which is Fremont; on the west by 15th and Elliott Avenues West, beyond which is Interbay, Magnolia, and Elliott Bay; on the east by Lake Union and Aurora Avenue North, beyond which is Westlake. As a neighborhood toponym, Queen Anne includes Lower Queen Anne, also known as Uptown, the area at the southern base of the hill, just north and west of Seattle Center.

Attraction-rich Seattle Center, in Lower Queen Anne, hosts cultural festivals. It's also home to the iconic Space Needle, with its observation deck, plus the Museum of Pop Culture and Chihuly Garden and Glass. Upper Queen Anne is known for 19th-century homes and Queen Anne Avenue's stylish shops and cafes. Kerry Park has sweeping city views.

The North Queen Anne area connects downtown with Westlake, Interbay, Fremont and, Ballard, along with major employers like Expedia, Google and, Tableau.

The Seattle Parks and Recreation Department maintains 24 parks on Queen Anne. Kerry Park, located on Highland Drive, covers a mere 1.26 acres, but boasts one of the most attractive views of the city, with downtown at the center of focus along with the Space Needle, and on clear days, Mount Rainier in the background.

**Queen Anne gives business owners, residents & visitors a balance of the best of what Seattle offers.**



# Market Overview | ABOUT SEATTLE



Seattle is a vibrant coastal metropolis nestled in King County, Washington. As the largest city in both the state and the Pacific Northwest, it boasts a stunning location on Puget Sound with breathtaking views of Lake Washington. The city's rapid growth has solidified its position as the 15th largest metropolitan area in the United States, with a population of approximately 4.02 million residents.

Known as a global tech hub, Seattle's economy is diverse and robust. The city serves as a major center for trade, finance, and transportation, with the Port of Seattle operating as a crucial gateway to Asia and Alaska. Beyond technology, Seattle's industries span a wide range, including aerospace, maritime, biotechnology, and renewable energy. The city's rich history as a lumber and fishing town continues to influence its culture and economy.

Seattle's reputation as a thriving tech hub is well-deserved. It boasts a highly educated population, ranking as one of the most educated cities in the United States. This fertile ground has fostered innovation, leading to the establishment of tech giants like Amazon

(#2 on the 2024 Fortune 500) and Microsoft (#13). Beyond these industry titans, Seattle nurtures a vibrant ecosystem of startups and tech companies, pushing boundaries across diverse fields.

While tech giants may dominate headlines, Seattle's business landscape is remarkably diverse. The city is a major center for trade and finance, with the Port of Seattle facilitating crucial trade routes with Asia and serving as a launchpad for Alaskan cruises. Looking beyond Fortune 500 companies, established players like department store giant Nordstrom (#286) and freight forwarder Expeditors International of Washington (#299) contribute significantly to the city's economic strength. Seattle's historical roots in lumber (Weyerhaeuser, #476) are still evident, with a healthy mix of traditional industries and cutting-edge tech companies fueling the city's continued growth.

Beyond these heavyweights, the Seattle area boasts a vibrant tech scene with companies like Nintendo of America in Redmond and T-Mobile US in Bellevue. For healthcare, Swedish Health Services, the largest healthcare system in Seattle itself, provides essential services to the city's residents. However, the state's largest healthcare system, Providence Health & Services, with its fifth-largest employer ranking, is located in nearby Renton.

Seattle's reputation for heavy coffee consumption remains strong. Starbucks (#116) is a global powerhouse founded in Seattle, alongside other local favorites like Seattle's Best Coffee and Tully's. Independent coffee shops and artisanal espresso roasters also thrive throughout the city, adding to its unique coffee culture.

**The “Emerald City” is extremely multicultural and is influenced by the Pacific Rim in art and architecture. The city offers residents a pace of life that can be either relaxed or fast paced and entrepreneurial.**



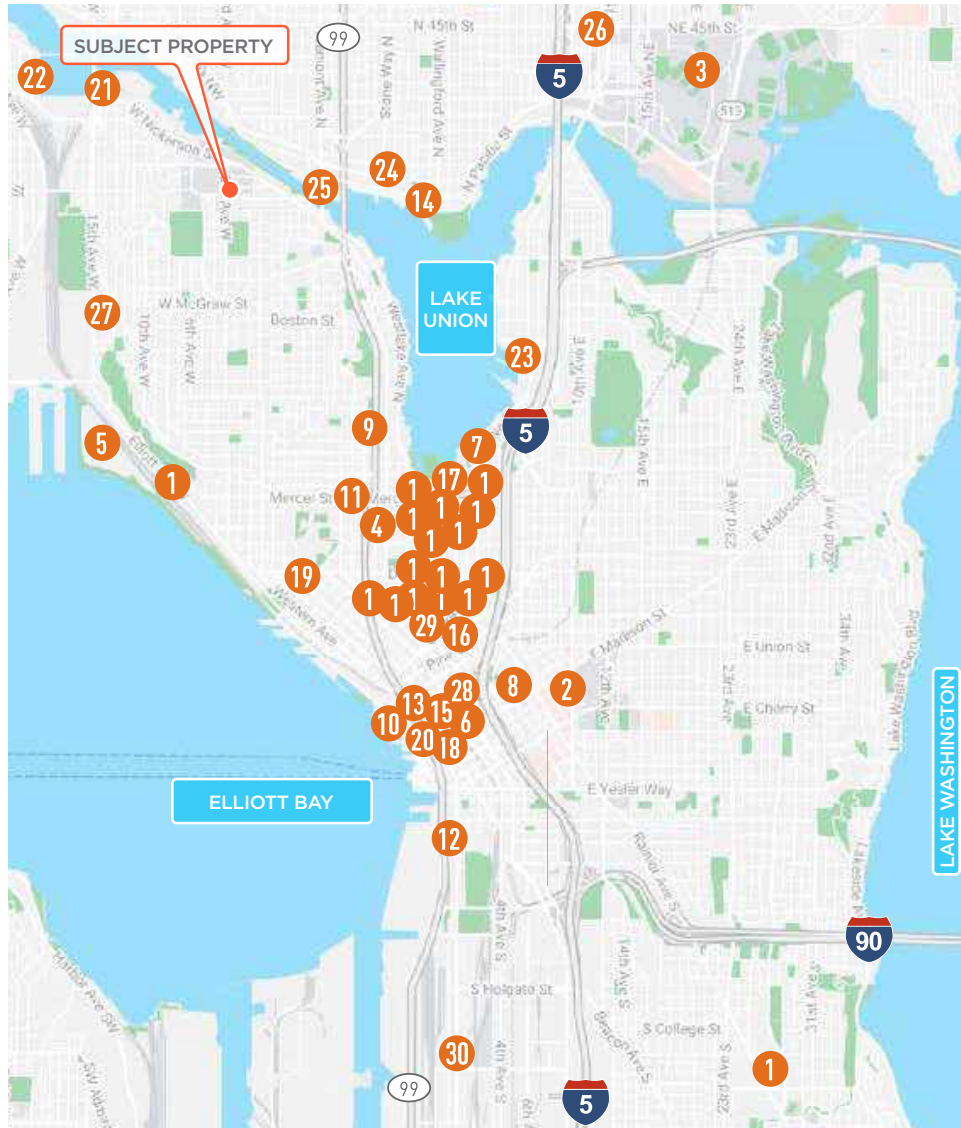
# Market Overview | MEDIAN HOUSEHOLD INCOMES



PROPERTY DEMOGRAPHICS	1 MILE	3 MILE	5 MILE
2024 Total Population	35,180	308,398	519,453
Pop Growth 2024-2029	0.2%	0.3%	0.3%
2024 Total Households	16,450	161,591	258,910
Median Household Income	\$129,829	\$117,881	\$116,619
Median Home Value	\$1,056,006	\$980,318	\$962,078



# Market Overview | NEARBY EMPLOYERS



# The Puget Sound Region

IS HOME TO SOME OF THE WORLD'S MOST SUCCESSFUL BUSINESSES

KEY SECTORS: Aerospace | Agriculture/Food Manufacturing | Clean Technology | Military Services  
Information & Communication Technology | Forest Products | Life Science/Global Health

- |    |  |    |  |    |  |
|----|--|----|--|----|--|
| 1  |  | 2  |  | 3  |  |
| 4  |  | 5  |  | 6  |  |
| 7  |  | 8  |  | 9  |  |
| 10 |  | 11 |  | 12 |  |
| 13 |  | 14 |  | 15 |  |
| 16 |  | 17 |  | 18 |  |
| 19 |  | 20 |  | 21 |  |
| 22 |  | 23 |  | 24 |  |
| 25 |  | 26 |  | 27 |  |
| 28 |  | 29 |  | 30 |  |



## Investment Contact

**Dan Foster**  
206.445.7662  
dfoster@orioncp.com

1218 Third Avenue  
Suite 2200  
Seattle, WA 98101

[www.orioncp.com](http://www.orioncp.com)

The information supplied herein is from sources we deem reliable. It is provided without any representation, warranty or guarantee, expressed or implied, as to its accuracy. Prospective buyer or tenant should conduct an independent investigation and verification of all matters deemed to be material, including, but not limited to, statements of income and expenses.