

GRANDVIEW STAND-ALONE WAREHOUSE

2425 Salashan Loop, Ferndale WA



FOR LEASE
\$0.65/ SF + NNN

- 7,280 SF GROUND FLOOR + STORAGE MEZZ.
- EASILY ACCESIBLE FROM I-5
- 2 12x14 ROLL-UP DOORS



PROPERTY SUMMARY

7,280 SF Warehouse centrally located in Whatcom County. Easily accessible to I-5 via Grandview. Building features 2x 12 x 14 Roll up doors, Two offices, bathrooms, vented paint room and multiple mezzanine storage areas. Fully Sprinklered.

PROPERTY OVERVIEW

Address: 2425 Salashan Loop,
Ferndale, WA 98248

APN: 3902060720450001

Total Rentable SF: 7,280

Year Built: 1992

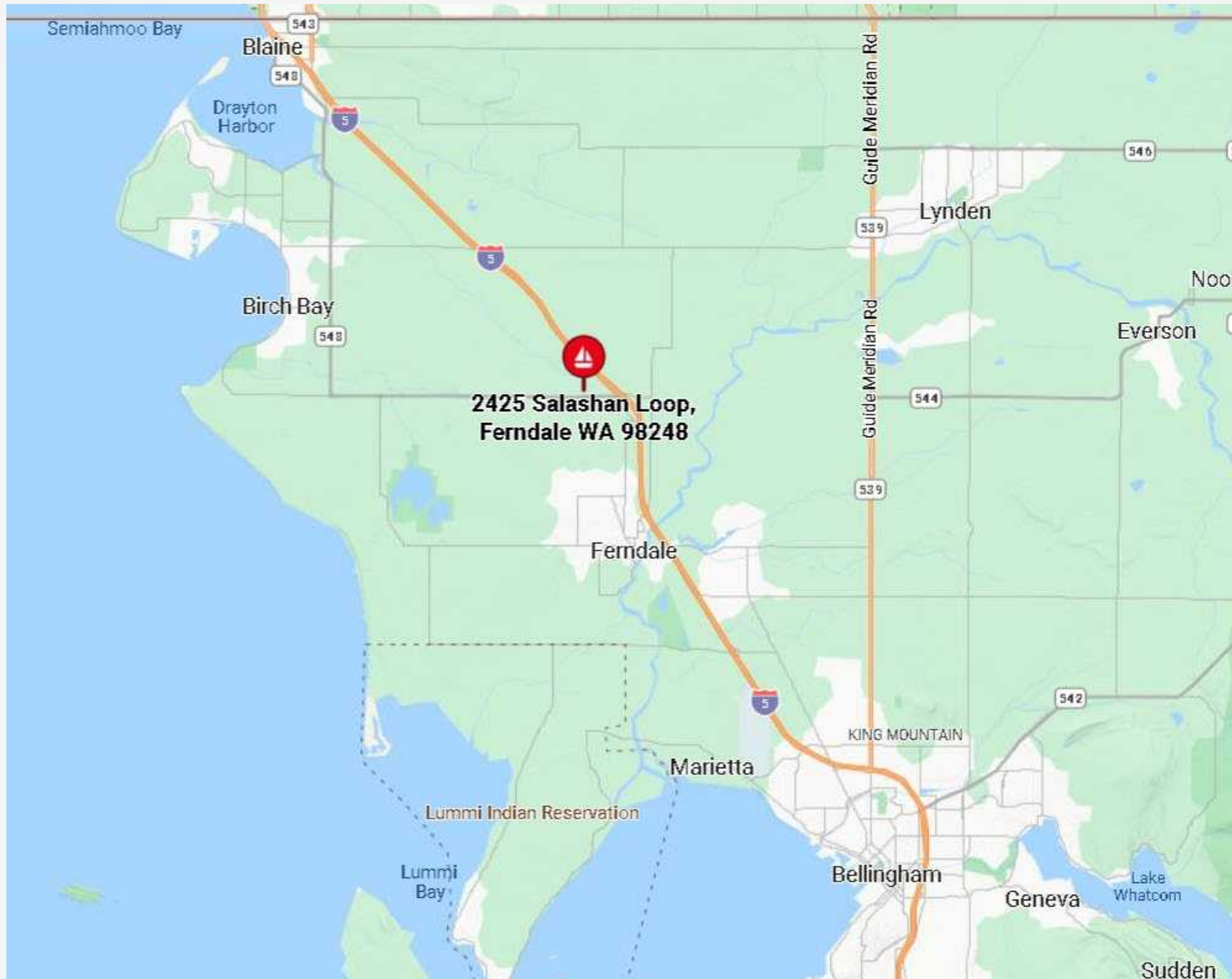
Warehouse Heating: Gas Reznor

Sprinklered: Yes

Power: 3-Phase – 480V 208/ 120

SUITE				
	SF	BASE RENT	EXPENSES	MONTHLY TOTAL
2425 Salashan Loop	7,280	\$4,732.00	\$1,820	\$6,552
		(\$0.65/ SF/ MO.)	(Est. \$0.25/ SF/	

MAP



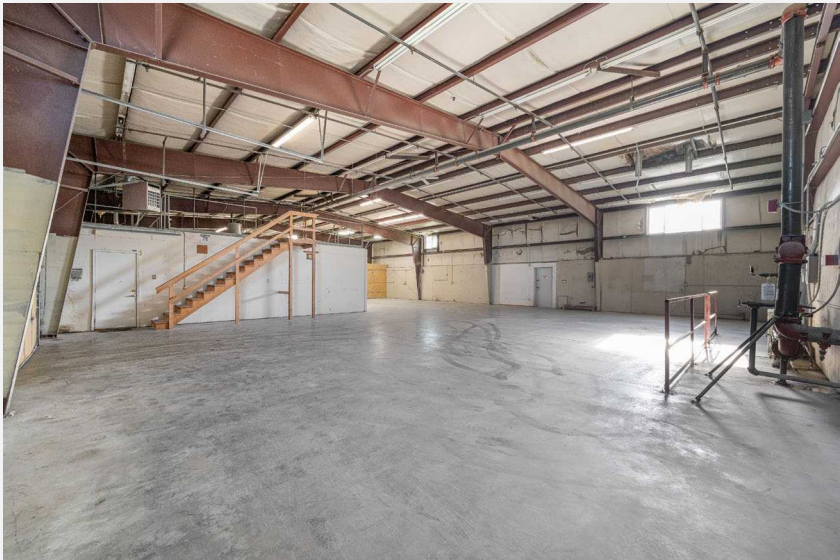


PROPERTY PHOTOS

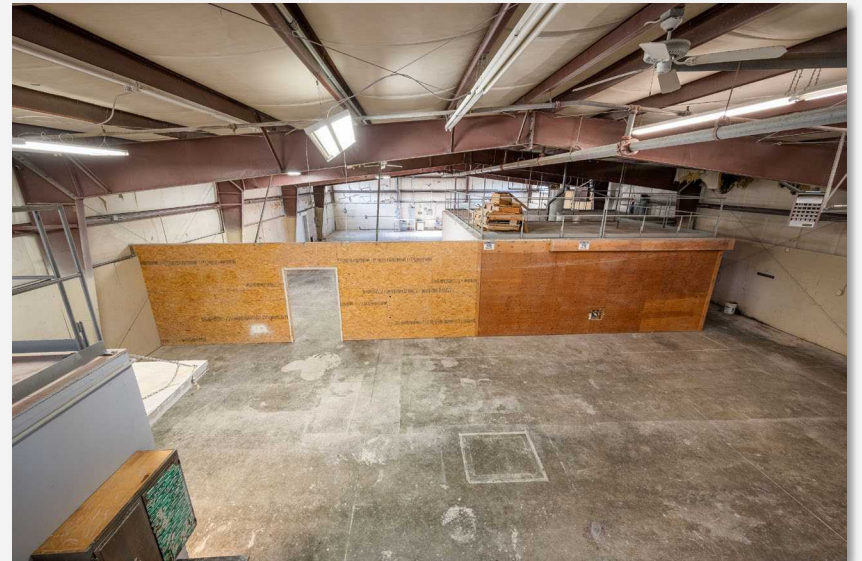
EXTERIOR PHOTOS



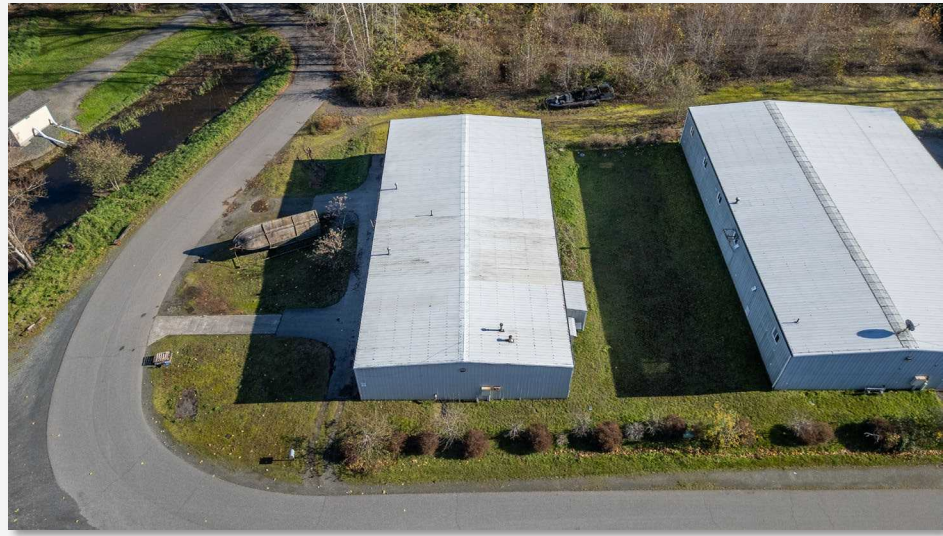
INTERIOR PHOTOS



INTERIOR PHOTOS



INTERIOR PHOTOS





FOR MORE INFORMATION

PLEASE CONTACT:

TRACY CARPENTER

GAGE COMMERCIAL REAL ESTATE, LLC.

BROKER/OWNER

360.303.2608

TRACY@GAGECRE.COM

GREG MARTINEAU, CCIM

GAGE COMMERCIAL REAL ESTATE, LLC.

BROKER/OWNER

360.820.4645

GREG@GAGECRE.COM