



# MORRISON BUILDING

17455 68TH AVENUE NE  
KENMORE, WA 98028

PACIFIC ASSET ADVISORS, INC.



## LISTING DETAILS



RENTABLE SF

1,014 SF

**\$24/SF**

RENT

**\$150/mo**

UTILITY CHARGE

**ADDRESS:** 17455 68th Avenue NE  
Kenmore, WA 98028

**SPACE AVAILABLE:** 204 (1,014 SF)

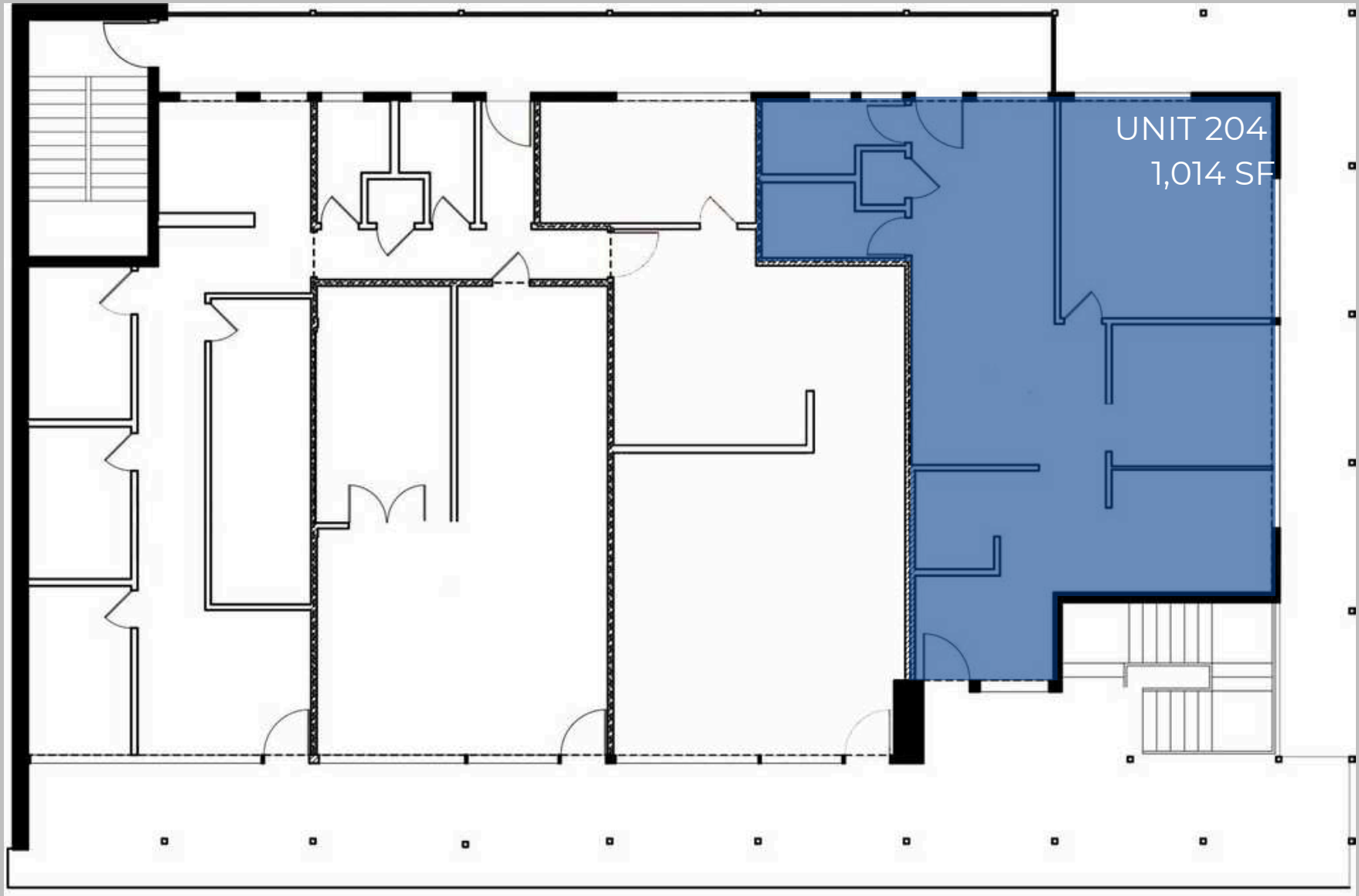
**MAJOR TENANTS:** Kenmore Camera,  
Evergreen Health,  
Seaplane...

	1 MILE	3 MILES	5 MILES
<b>MEDIAN INCOME:</b>	\$141,849	\$144,073	\$133,171
<b>TOTAL POPULATION:</b>	11,721	107,993	344,943
<b>DAYTIME POPULATION:</b>	6,177	47,057	192,616

425.990.6200 | PAADVISORS.COM

SITE PLAN

SECOND FLOOR





# AERIAL



**SITE**



**KENMORE AIR**

**SAMMAMISH RIVER**

**LAKE WASHINGTON**





# CONTACT



**RYAN CORNISH**  
SENIOR VICE PRESIDENT  
PARTNER  
206.375.6142  
[RYAN@PAADVISORS.COM](mailto:RYAN@PAADVISORS.COM)

**PACIFIC ASSET ADVISORS, INC.**  
THE PREMIER CHOICE OF THE PACIFIC NORTHWEST

14205 SE 36TH ST, SUITE 215, BELLEVUE, WA 98006