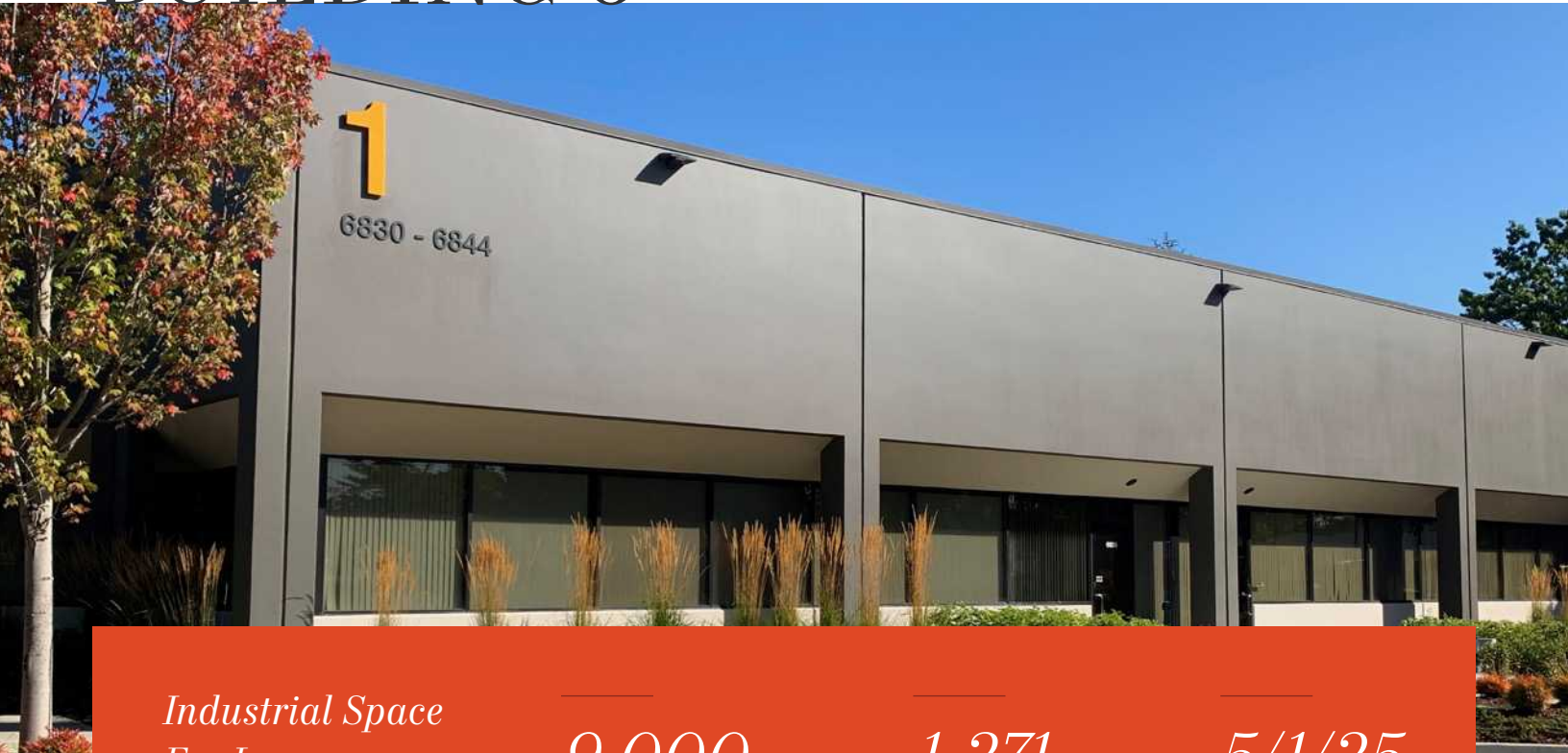


PACIFIC BUSINESS PARK BUILDING 6



*Industrial Space
For Lease*

9,000
SF TOTAL

1,271
SF OFFICE

5/1/25
AVAILABLE,
POSSIBLY SOONER

9,000 SF total available, 1,271 SF office

Approximately \$1.20/SF shell, \$1.30/SF office add-on +
NNN

Four dock high doors, four grade-level door

20' clear height

Tremendous access to I-5 & SR-167 St via S 212th St

Comcast cable available

Onsite roaming security guard with patrol car, from
9 PM-5 AM seven days a week

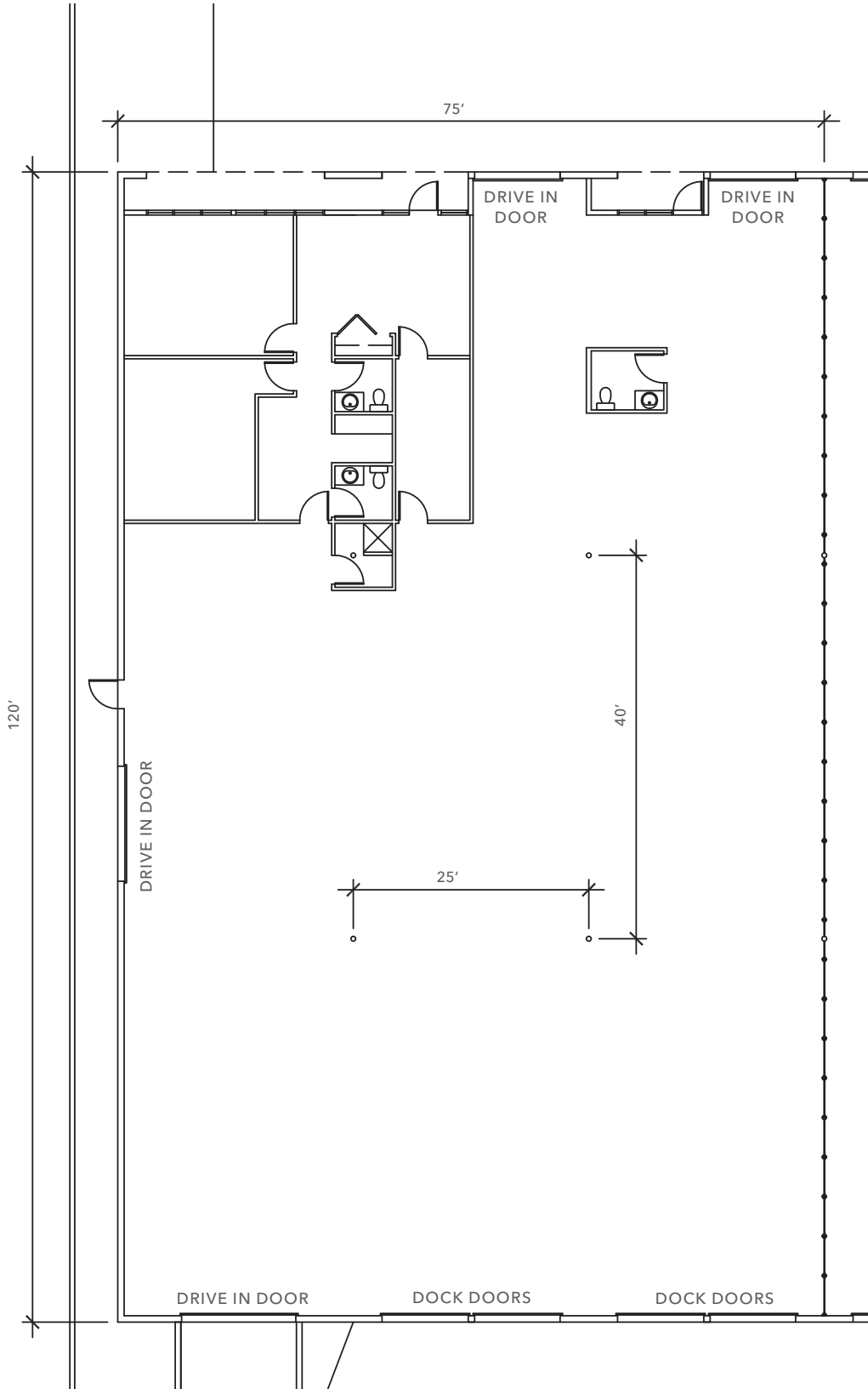
Available 5/1/25, possibly sooner

DOUG KLEIN, SIOR
206.248.7348
doug.klein@kidder.com

KRAIG HEETER, SIOR
206.248.7313
kraig.heeter@kidder.com

KIDDER.COM

This information supplied herein is from sources we deem reliable. It is provided without any representation, warranty, or guarantee, expressed or implied as to its accuracy. Prospective Buyer or Tenant should conduct an independent investigation and verification of all matters deemed to be material, including, but not limited to, statements of income and expenses. Consult your attorney, accountant, or other professional advisor.



FOR LEASE



L1
ZONING

5 MIN
TO SR-167

14 MIN
TO SEATAC AIRPORT



KIDDER.COM

This information supplied herein is from sources we deem reliable. It is provided without any representation, warranty, or guarantee, expressed or implied as to its accuracy. Prospective Buyer or Tenant should conduct an independent investigation and verification of all matters deemed to be material, including, but not limited to, statements of income and expenses. Consult your attorney, accountant, or other professional advisor.

