

SEATAC BUSINESS CENTER

20820 INTERNATIONAL BLVD., SEATAC, WA 98198



WAREHOUSE WITH YARD AVAILABLE

OVERVIEW

| | |
|------------------|-------------------------------------|
| AVAILABLE SF: | ±4,533 SF |
| OFFICE SF: | ±250 SF |
| YARD SF: | ±5,500 SF |
| CLEAR HEIGHT: | ±14' |
| COLUMN SPACING: | Clear Span |
| LOADING DOORS: | 1 Grade-Level (1 add'l GL possible) |
| ZONING: | CB-C (City of SeaTac) |
| BLENDED RATE: | \$1.50 / SF / Month |
| NNN (ESTIMATED): | \$0.29 / SF / Month |

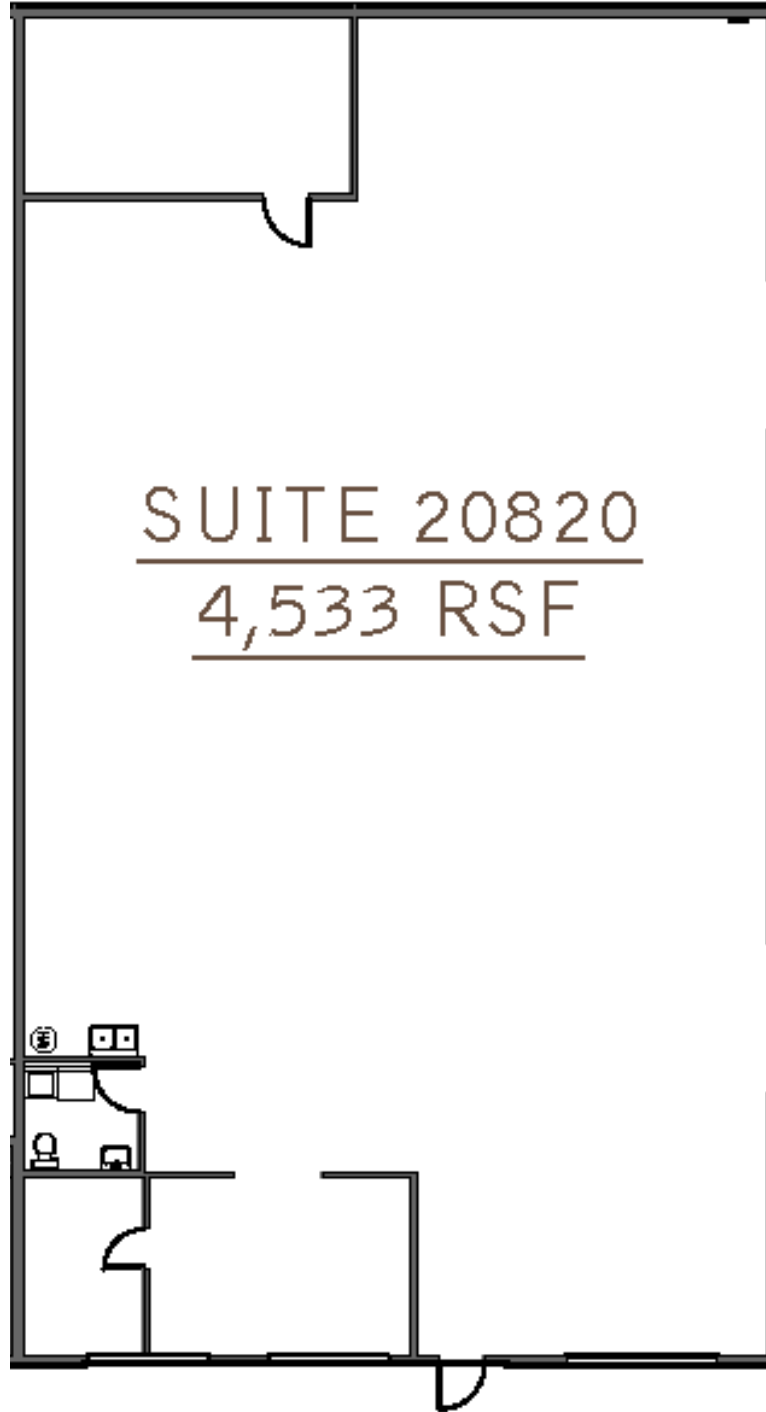
COMMENTS

Conveniently located on International Blvd. at the corner of 208th St., a lighted intersection that allows for left turns in and out of the park, with quick access to area highways. Park has new sealcoat and striping. This space offers ±5,500 SF of secured yard adjacent to premises. Suitable for heavier industrial, assembly or distribution.



SEATAC BUSINESS CENTER

20820 INTERNATIONAL BLVD., SEATAC, WA 98198



CONTACT

Sean Durkin, SIOR, MSRE, CCIM

sdurkin@lee-associates.com

C 425.830.2647

Zane Shiras, SIOR, CCIM

zshiras@lee-associates.com

C 206.724.7120

Scott Hill

shill@lee-associates.com

C 510.393.6661

All information furnished regarding property for sale, rental or financing is from sources deemed reliable, but no warranty or representation is made to the accuracy thereof and same is submitted to errors, omissions, change of price, rental or other conditions prior to sale, lease or financing or withdrawal without notice. No liability of any kind is to be imposed on the broker herein.

SEATAC BUSINESS CENTER

20820 INTERNATIONAL BLVD., SEATAC, WA 98198



CONTACT

Sean Durkin, SIOR, MSRE, CCIM
sdurkin@lee-associates.com
C 425.830.2647

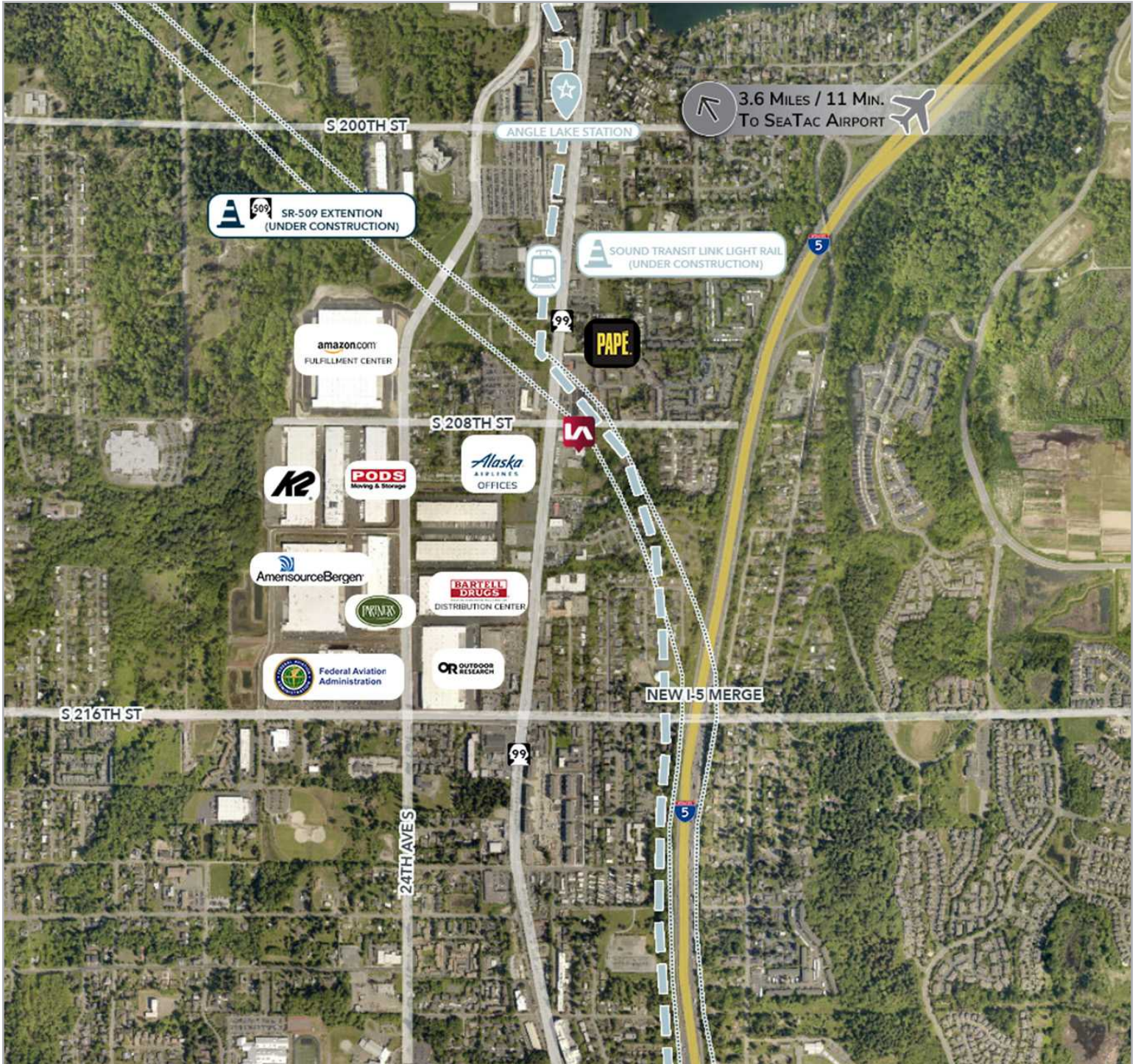
Zane Shiras, SIOR, CCIM
zshiras@lee-associates.com
C 206.724.7120

Scott Hill
shill@lee-associates.com
C 510.393.6661

All information furnished regarding property for sale, rental or financing is from sources deemed reliable, but no warranty or representation is made to the accuracy thereof and same is submitted to errors, omissions, change of price, rental or other conditions prior to sale, lease or financing or withdrawal without notice. No liability of any kind is to be imposed on the broker herein.

SEATAC BUSINESS CENTER

20820 INTERNATIONAL BLVD., SEATAC, WA 98198



CONTACT

Sean Durkin, SIOR, MSRE, CCIM
sdurkin@lee-associates.com
C 425.830.2647

Zane Shiras, SIOR, CCIM
zshiras@lee-associates.com
C 206.724.7120

Scott Hill
shill@lee-associates.com
C 510.393.6661

All information furnished regarding property for sale, rental or financing is from sources deemed reliable, but no warranty or representation is made to the accuracy thereof and same is submitted to errors, omissions, change of price, rental or other conditions prior to sale, lease or financing or withdrawal without notice. No liability of any kind is to be imposed on the broker herein.