



# 2333 SOUTH 200TH STREET

SEATAC, WA



5,000 - 11,625 SF FOR SUBLEASE

# Property Highlights

2333 S 200TH STREET | SEATAC, WA

**5,000 - 11,625 SF (1,968 SF Office)**

16' clear height

7 dock high doors

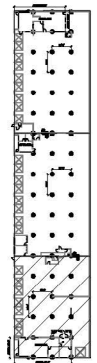
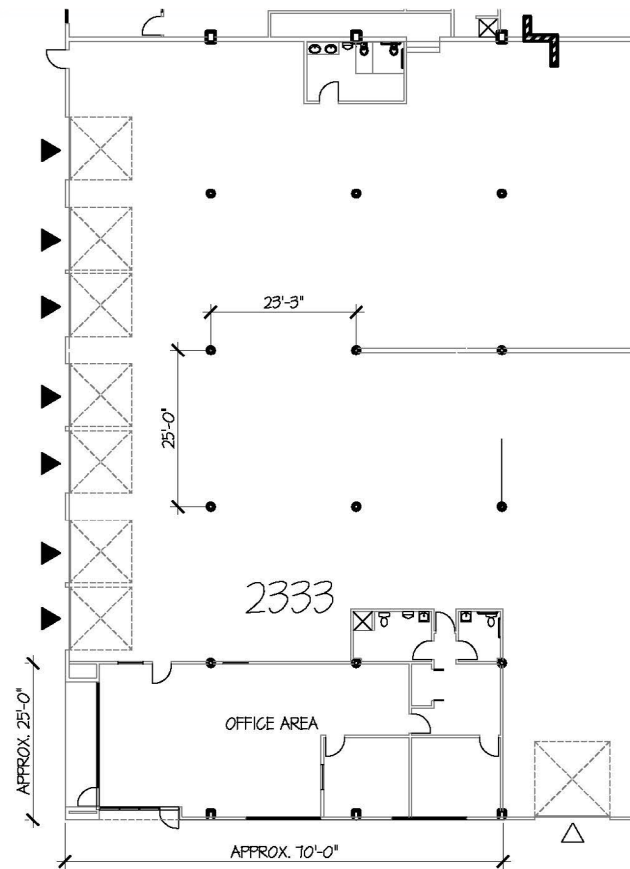
1 oversized grade level door

Approximately 2,500 SF of fenced yard area

Available December 1, 2024

Can accommodate month-to-month or long-term deals

Contract brokers for rates

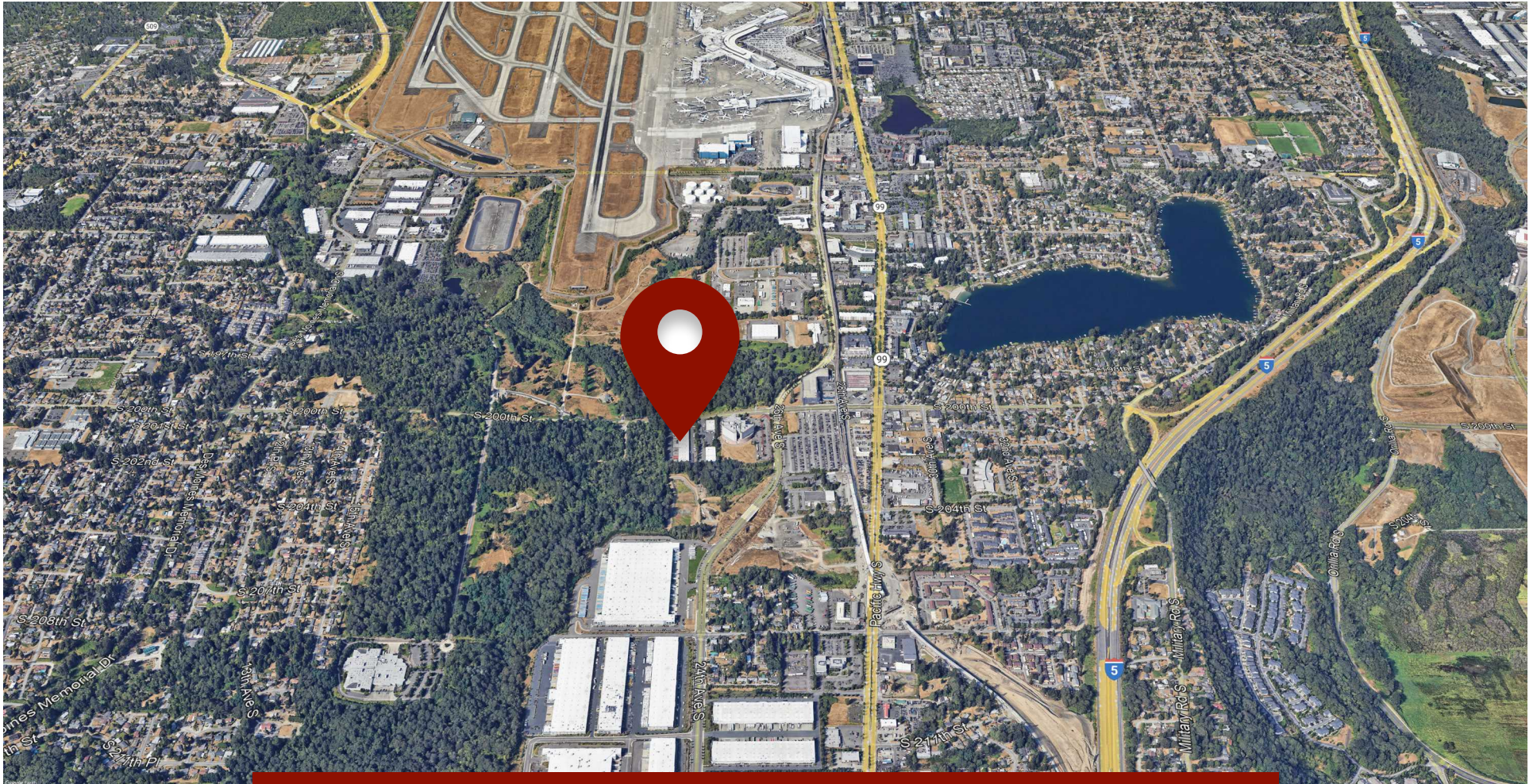


**Key Plan**  
LOWER LEVEL

- ▶ DOCK HIGH DOOR
- ▷ GRADE LEVEL DOOR

**Connor Cree**  
Managing Director  
+1 206 521 0289  
connor.cree@cushwake.com

**CUSHMAN & WAKEFIELD**



# Location Overview

**1.6 MILES**  
TO SEATAC  
AIRPORT

**15 MILES**  
TO THE PORT  
OF SEATTLE

**18 MILES**  
TO THE PORT  
OF TACOMA

©2024 Cushman & Wakefield. All rights reserved. The information contained in this communication is strictly confidential. This information has been obtained from sources believed to be reliable but has not been verified. NO WARRANTY OR REPRESENTATION, EXPRESS OR IMPLIED, IS MADE AS TO THE CONDITION OF THE PROPERTY (OR PROPERTIES) REFERENCED HEREIN OR AS TO THE ACCURACY OR COMPLETENESS OF THE INFORMATION CONTAINED HEREIN, AND SAME IS SUBMITTED SUBJECT TO ERRORS, OMISSIONS, CHANGE OF PRICE, RENTAL OR OTHER CONDITIONS, WITHDRAWAL WITHOUT NOTICE, AND TO ANY SPECIAL LISTING CONDITIONS IMPOSED BY THE PROPERTY OWNER(S). ANY PROJECTIONS, OPINIONS OR ESTIMATES ARE SUBJECT TO UNCERTAINTY AND DO NOT SIGNIFY CURRENT OR FUTURE PROPERTY PERFORMANCE.

**Connor Cree**  
Managing Director  
+1 206 521 0289  
connor.cree@cushwake.com

