

2,146 SF Industrial/Commercial Building for Lease  
\$1.75/SF/Month NNN



925 NW 49th Street  
Seattle, WA 98107



# Property Details

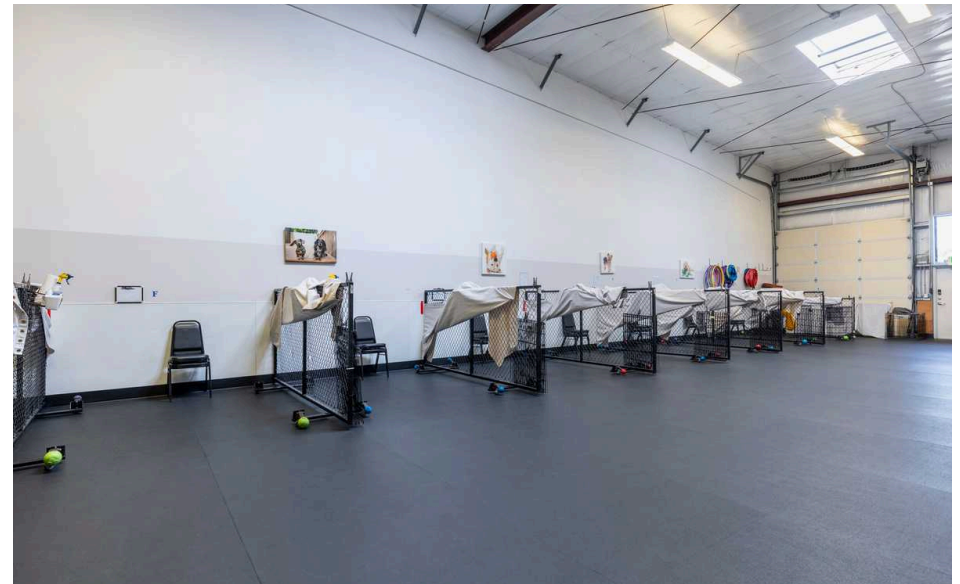
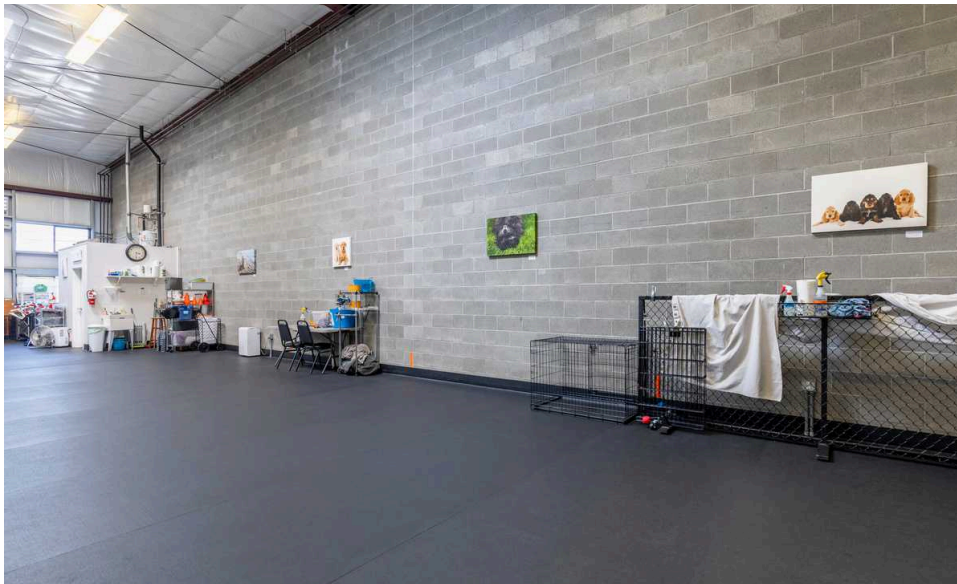
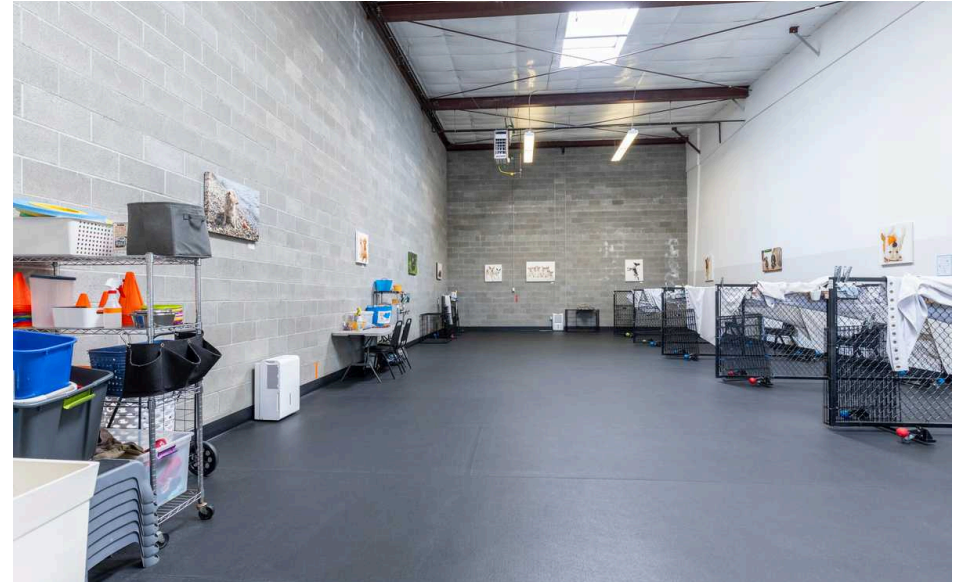
Address: 925 NW 49th St, Seattle, WA 98107  
Price: \$1.75/SF/Month NNN  
Est. NNN: \$4.25/SF/YR  
Building Size: 7,363 Square Feet  
Suite A Size: 2,146 Square Feet  
Lot Size: 10,000 Square Feet  
Uncovered Parking: 1+ off-street parking spaces  
Year Built: 2011  
Zoning: UI U/45  
Features: 20 foot ceilings  
Clear Span  
1 restroom  
Floor Drain  
W/D Hook-Up  
1 Roll-Up Door





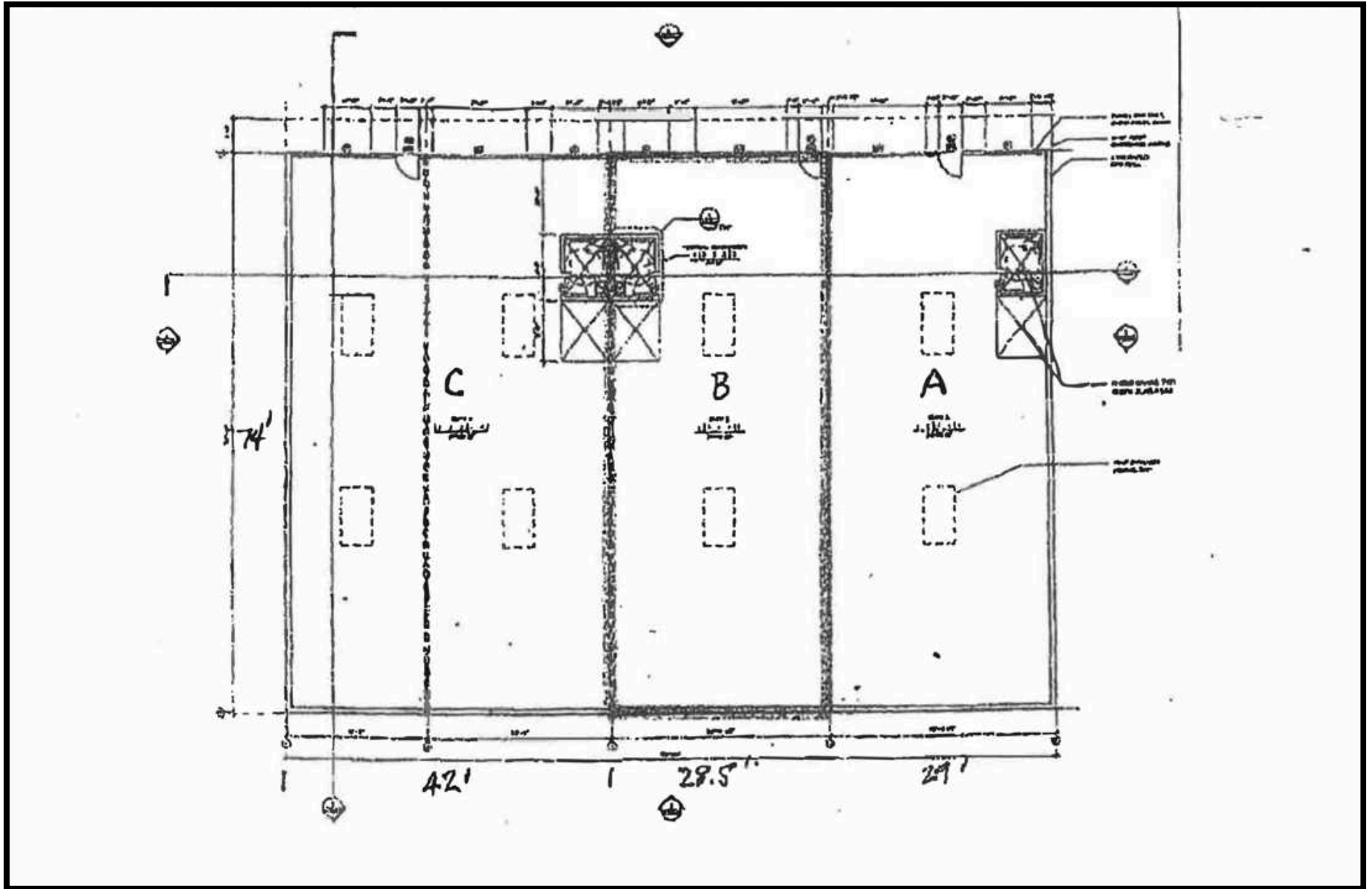
# Property Photos

925 NW 49th St, Seattle, WA 98107  
Suite A-2, 146 Square Feet



# Floor Plan

925 NW 49th St, Seattle, WA 98107







Exclusively Listed By:

Lauren Hendricks

Windermere RE Midtown Commercial

Phone: 206-999-9161

[LaurenHendricks@windermere.com](mailto:LaurenHendricks@windermere.com)

[www.CommercialSeattle.com](http://www.CommercialSeattle.com)



LAUREN  
HENDRICKS  
COMMERCIAL REALTOR