

# +/- 2,000 - 3,000 SF OFFICE/RETAIL



## FOR LEASE



## Key Plaza I

11901 137th Avenue NW, Gig Harbor, Washington 98329

### Property Highlights

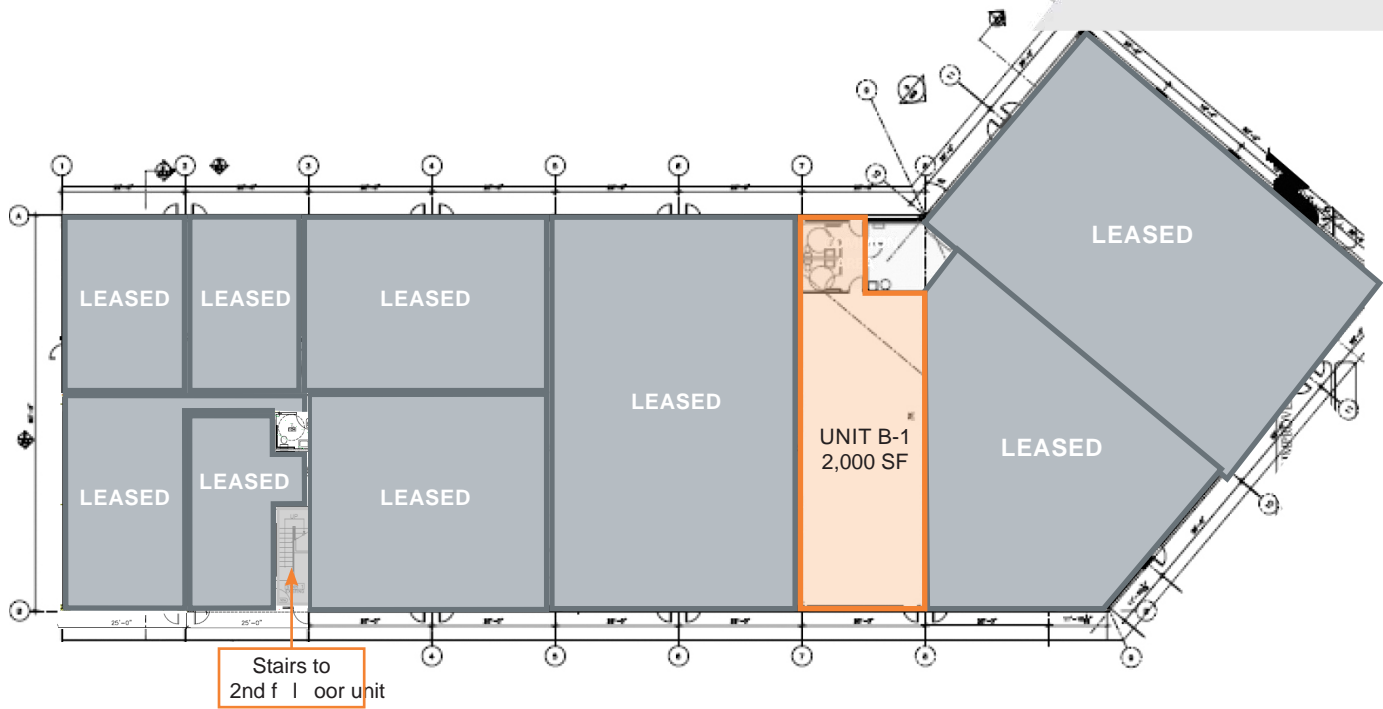
- Available Suites (office, retail or flex):
  - Unit B-1: 2,000 SF
  - Unit F: 2,999 SF (on second level with numerous offices (divisible))
- Excellent visibility on Key Peninsula Highway
- Good access, left turn lane off Highway
- On-site parking, ADA access
- Zoning: Rural Neighborhood Center (RNC)
- Additional adjacent 2.38 acres available for parking or yard storage - available for lease or purchase
- Traffic Counts +16,000/daily
- Lease Rates (building only): \$18.00 - \$20.00 PSF, modified gross



# +/- 2,000 - 3,000 SF OFFICE/RETAIL



## FOR LEASE



VIEW 2ND FLOOR PLAN 2,999 SF (UNIT F) ON FOLLOWING PAGE

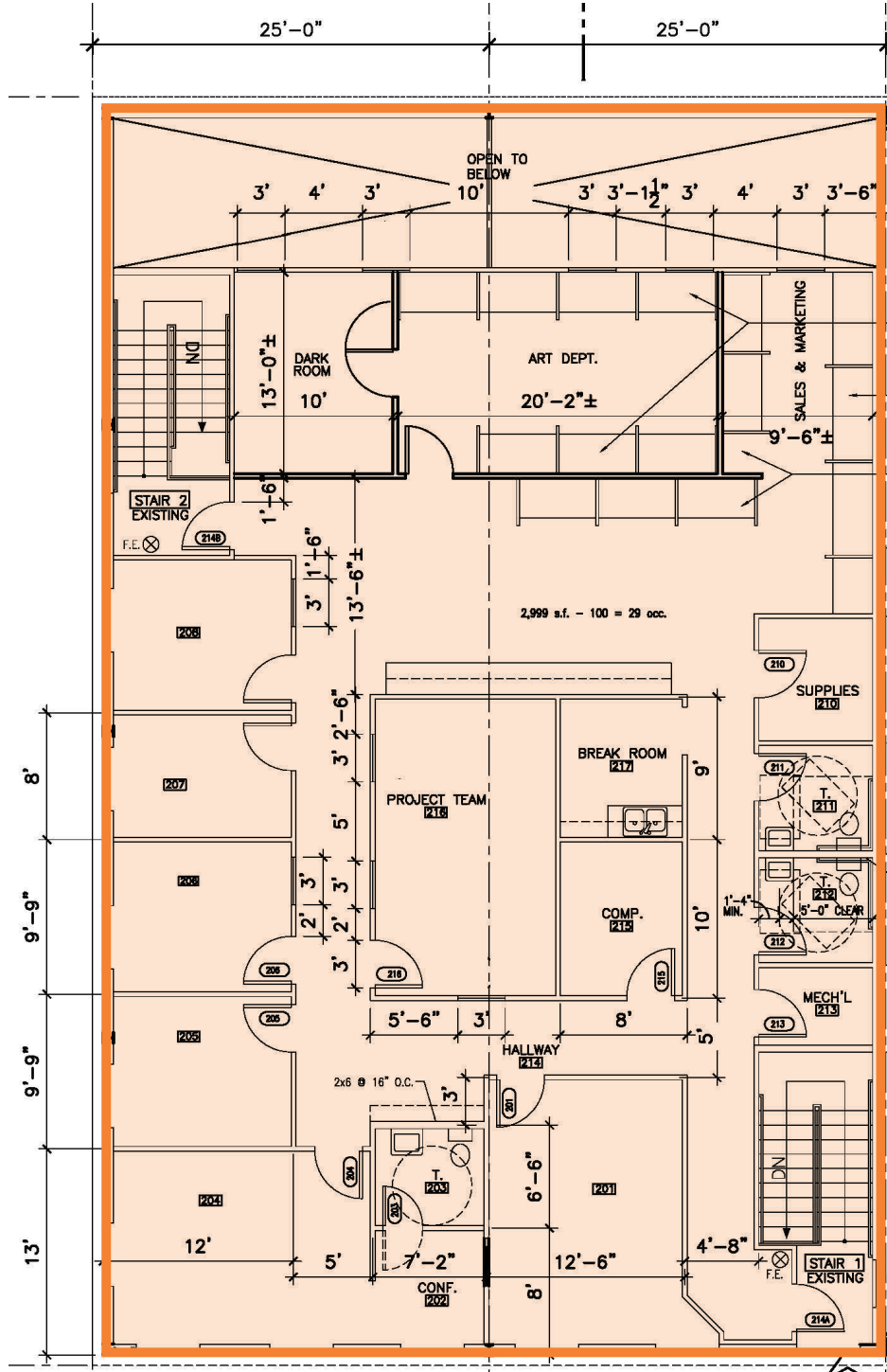


# +/- 2,000 - 3,000 SF OFFICE/RETAIL



## FOR LEASE

### UNIT F (SECOND LEVEL) 2,999 SF (divisible)



**+/- 2,000 - 3,000 SF**  
**OFFICE/RETAIL**



**FOR LEASE**



<https://www.nai-psp.com>

**Kim Marvik**  
Partner | 253.203.1325  
kmarvik@nai-psp.com

NO WARRANTY, EXPRESS OR IMPLIED, IS MADE AS TO THE ACCURACY OF THE INFORMATION CONTAINED HEREIN. THIS INFORMATION IS SUBMITTED SUBJECT TO ERRORS, OMISSIONS, CHANGE OF PRICE, RENTAL OR OTHER CONDITIONS, WITHDRAWAL WITHOUT NOTICE, AND IS SUBJECT TO ANY SPECIAL LISTING CONDITIONS IMPOSED BY OUR PRINCIPALS, COOPERATING BROKERS, BUYERS, TENANTS AND OTHER PARTIES WHO RECEIVE THIS DOCUMENT SHOULD NOT RELY ON IT, BUT SHOULD USE IT AS A STARTING POINT OF ANALYSIS, AND SHOULD INDEPENDENTLY CONFIRM THE ACCURACY OF THE INFORMATION CONTAINED HEREIN THROUGH A DUE DILIGENCE REVIEW OF THE BOOKS, RECORDS, FILES AND DOCUMENTS THAT CONSTITUTE RELIABLE SOURCES OF THE INFORMATION DESCRIBED HEREIN. LOGOS ARE FOR IDENTIFICATION PURPOSES ONLY AND MAY BE TRADEMARKS OF THEIR RESPECTIVE COMPANIES.