

For Sale or Lease

Centralia Northpark One

3709 NORTHPARK DRIVE, CENTRALIA, WA



WILL SCHMIDT
206 794 0421
wschmidt@nai-pp.com

KYLE SCHIPPER, SIOR
253 203 1320
kschipper@nai-pp.com

NAI Puget Sound
Properties

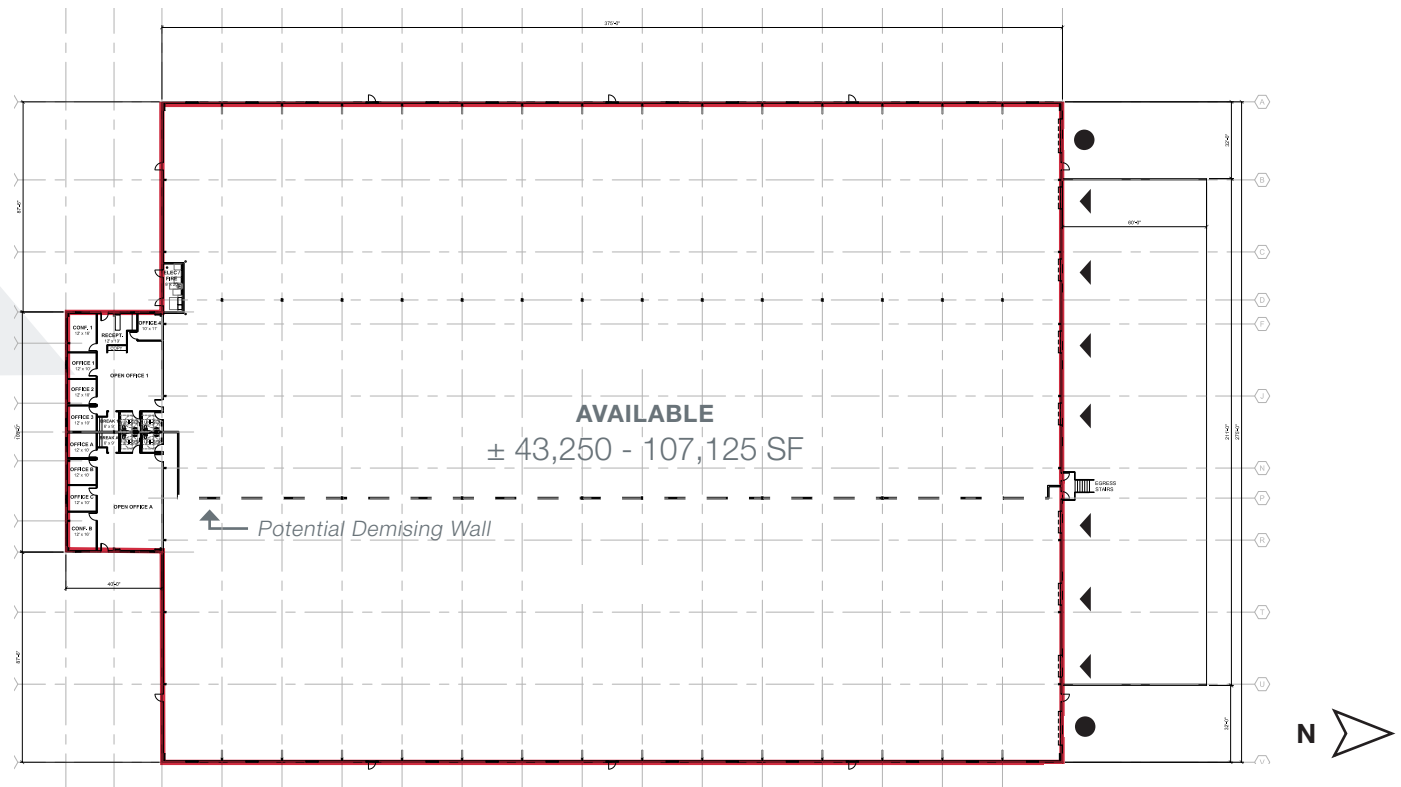
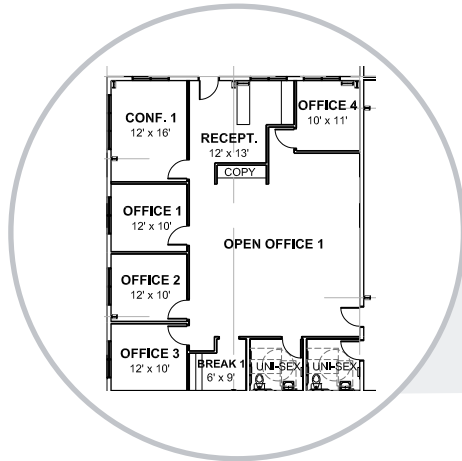


Sale & Lease Summary



NAI Puget Sound Properties is pleased to offer the opportunity to lease or buy Centralia Northpark One. Located just off of I-5, it's the perfect midpoint for your Industrial Warehouse needs.

ADDRESS	3709 Northpark Drive Centralia, WA
PARCEL NUMBER	024005001001
RENTABLE AREA	± 43,250 - 107,125 SF
ZONING	PMP - Heavy Industrial, allows for a wide range of uses
DELIVERY	March 1, 2025
PRICE	Call broker for rates

Conceptual Floor Plan



KEY

-  Dock Door
-  Grade Level Door
-  Available
-  Demising wall



Foreign Trade Zone designation

Business friendly city

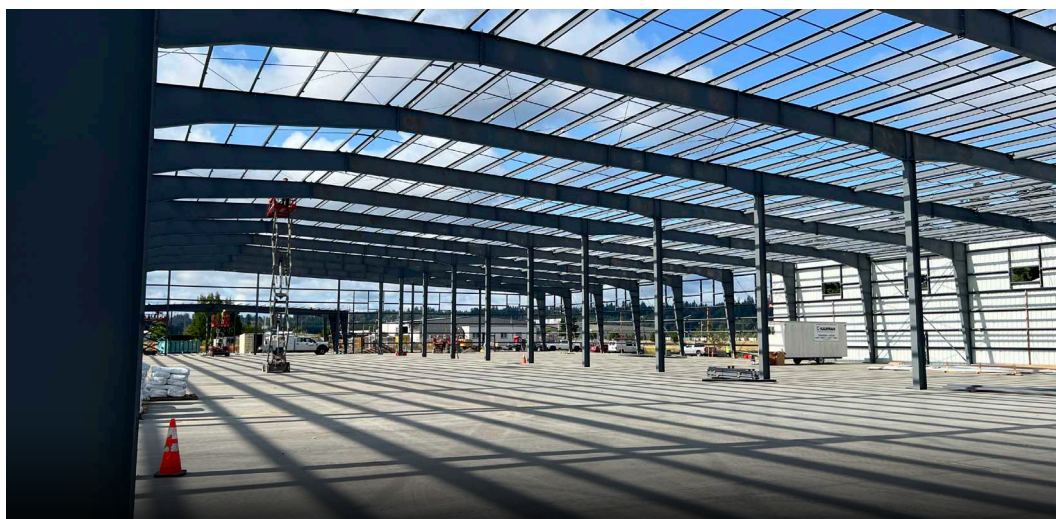
Ideal Midpoint between Seattle & Portland

Highlights

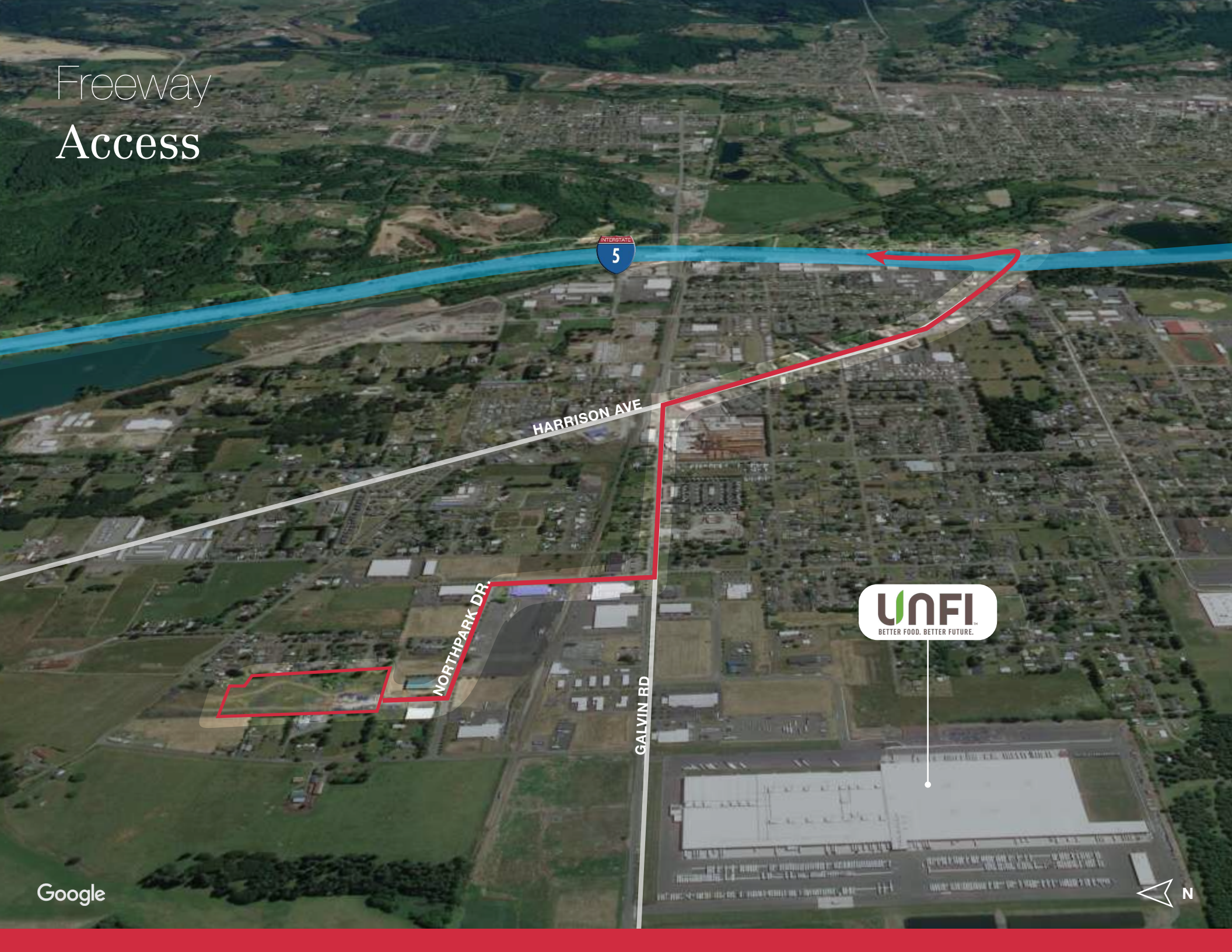
- + 107,125 SF (demisable 43,250 SF)
- + 4,000 SF Office
- + 7 Dock Doors (potential to add more)
- + 2 Grade Level Doors (14' x 14')
- + 24' Clear Height
- + Heavy Power
- + Additional trailer parking available

*Construction is underway
at Centralia Northpark One!*

Photos taken July 25, 2024



Freeway Access



HARRISON AVE

NORTH PARK DR.

GALVIN RD



Connected Location



Centralia Northpark One

3709 NORTHPARK DRIVE, CENTRALIA, WA



EXCLUSIVELY LISTED BY:

WILL SCHMIDT
206 794 0421
wschmidt@nai-pp.com

KYLE SCHIPPER, SIOR
253 203 1320
kschipper@nai-pp.com

NAI Puget Sound
Properties

THE INFORMATION CONTAINED HEREIN HAS BEEN GIVEN TO US BY THE OWNER OF THE PROPERTY OR OTHER SOURCES WE DEEM RELIABLE. WE HAVE NO REASON TO DOUBT ITS ACCURACY, BUT WE DO NOT GUARANTEE IT. ALL INFORMATION SHOULD BE VERIFIED PRIOR TO PURCHASE OR LEASE.
G:\SHARED\DRIVES\ADMIN\TEAM\MARKETING\FLYERS\OUTSIDE\MARKET\COUNTY\LEWIS\COUNTY\3709NORTHPARKDR\CUSTOMFLYER-WSKS\3705NORTHPARKDR\WSKS