

FOR LEASE

FAIRWAY CENTER

High-quality office space for lease

14220-14240 INTERURBAN AVE S, TUKWILA, WA

FAIRWAY CENTER
14220 - 14240

KIDDER.COM

km Kidder
Mathews

FAIRWAY CENTER

Excellent location provides access to I-405, I-5 and only five minutes to SeaTac Airport

Metro bus stop adjacent to property and minutes to the Link Light Rail station on International Blvd

Fitness center and showers on-site

Interurban Trail access

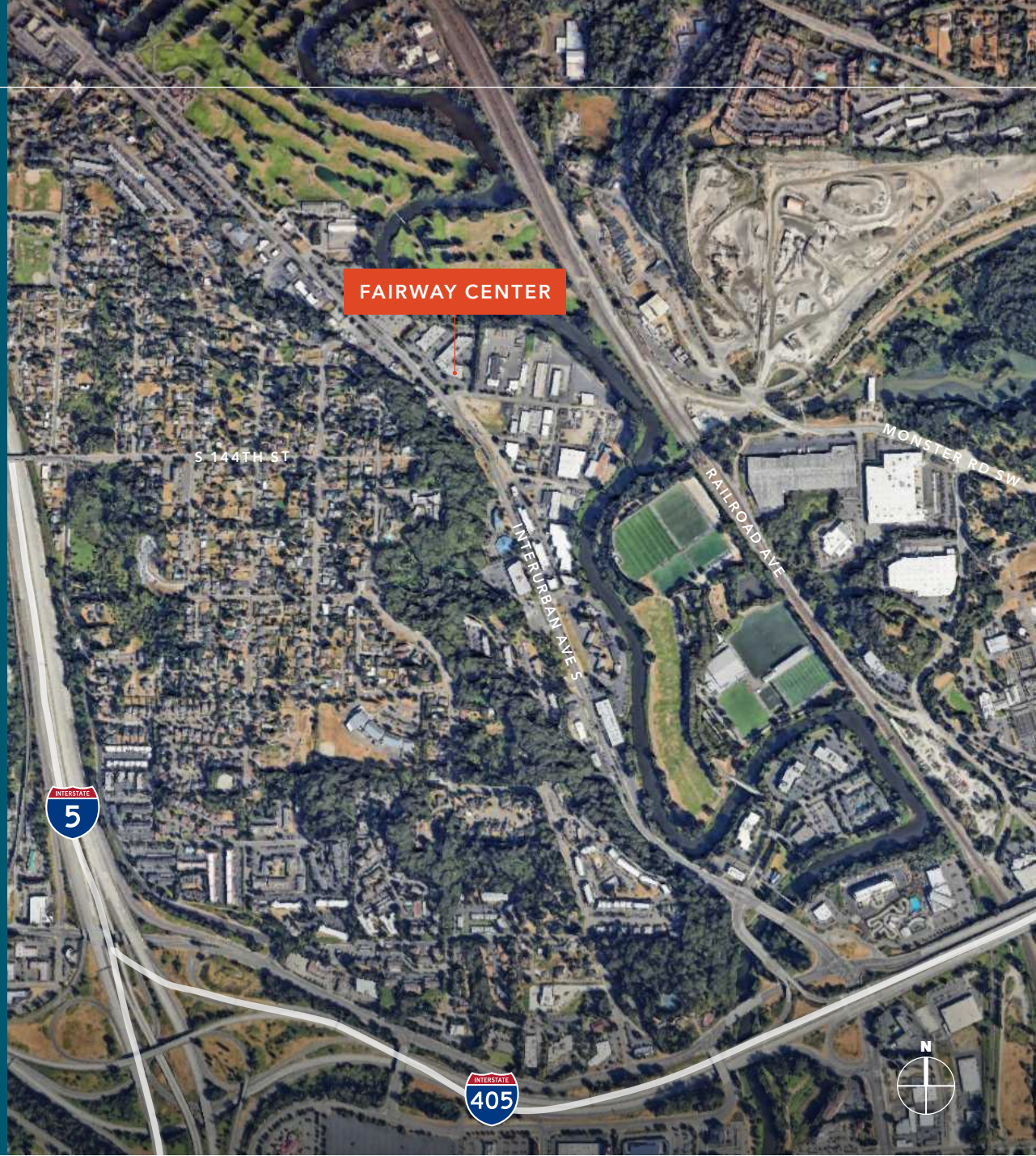
Abundant free parking

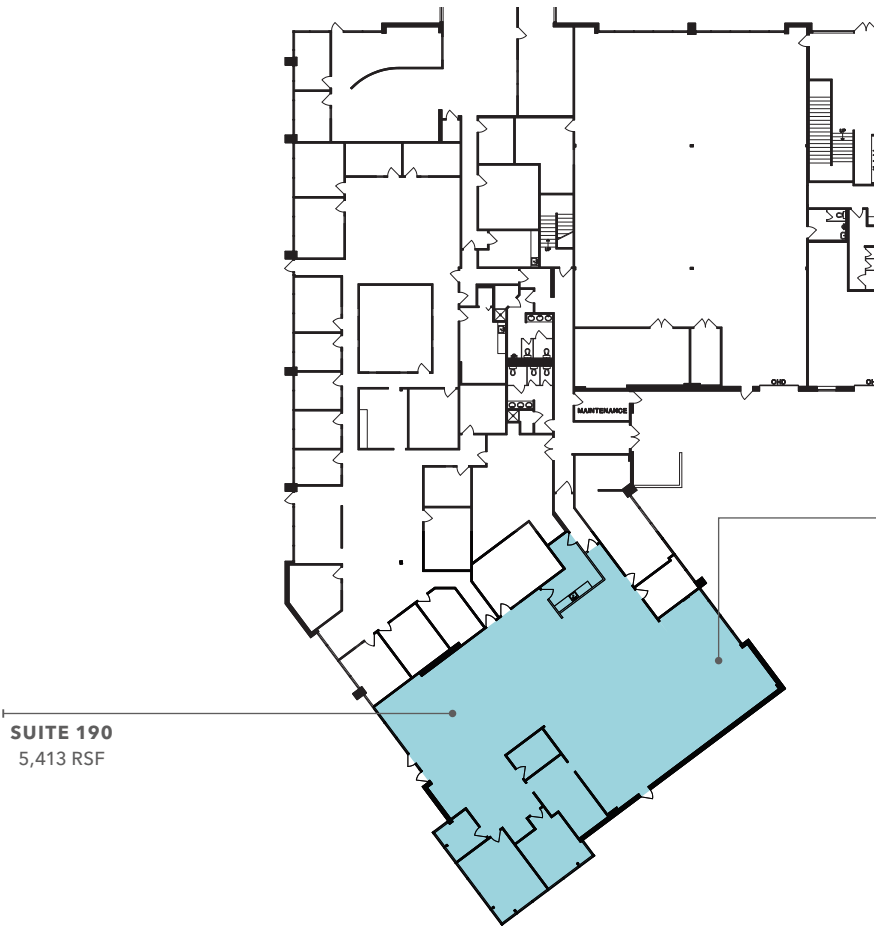
\$25.00 PSF, full service

1,642 RSF to 5,413 RSF

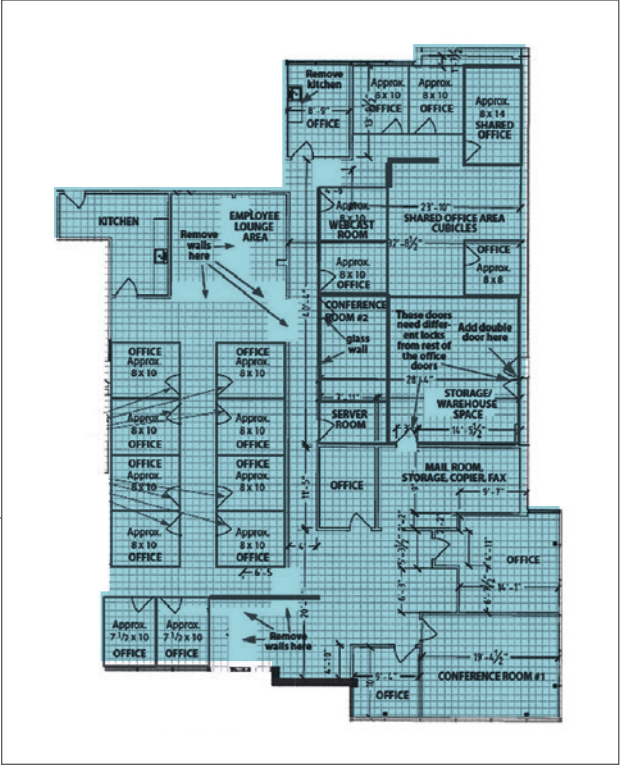
5 MIN
SEATAC AIRPORT

19 MIN
SEATTLE CBD



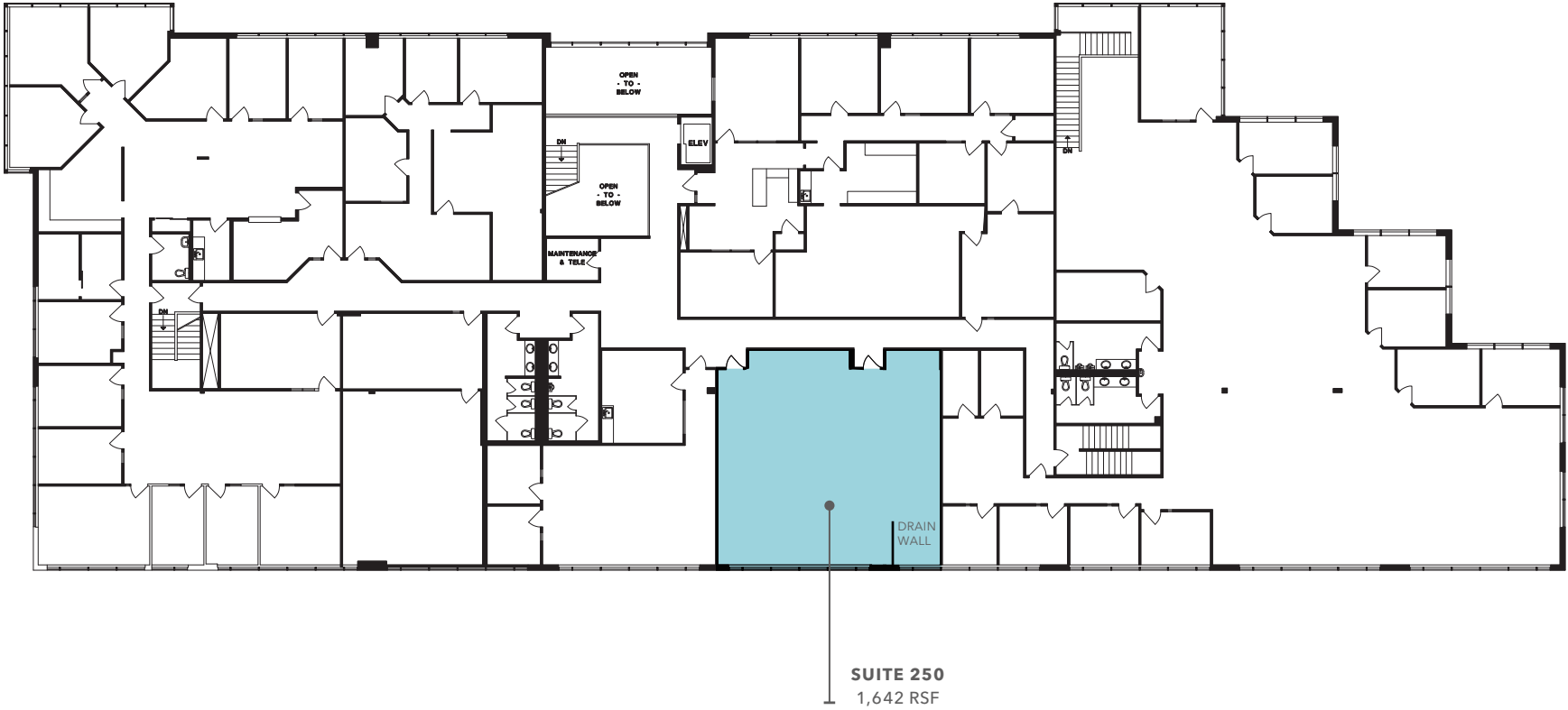


SUITE 190
5,413 RSF



BUILDING B | FIRST FLOOR

Building	Suite	Floor	RSF	Available
B	190	1	5,413 RSF	Now



BUILDING B | SECOND FLOOR

Building	Suite	Floor	RSF	Available
B	250	2	1,642 RSF	Available now

FAIRWAY CENTER





FAIRWAY CENTER

*For more information on
this property, please contact*

BRIAN CLAPP
206.248.7316
brian.clapp@kidder.com

SPENCER CLAPP
206.248.7427
spencer.clapp@kidder.com KIDDER.COM

This information supplied herein is from sources we deem reliable. It is provided without any representation, warranty, or guarantee, expressed or implied as to its accuracy. Prospective Buyer or Tenant should conduct an independent investigation and verification of all matters deemed to be material, including, but not limited to, statements of income and expenses. Consult your attorney, accountant, or other professional advisor. All Kidder Mathews designs are the sole property of Kidder Mathews. Branded materials and layouts are not authorized for use by any other firm or person.

