



# PARK 180

FOR LEASE

*Office/Warehouse Available  
in the Marymoor Park Area*

7102-7126 180TH AVE NE | REDMOND, WA

*4,180 - 15,307 SF*

BUILDING A

*4,107 SF*

BUILDING B



**PROPERTY DETAILS**

ADDRESS	7102-7126 180th Ave NE Redmond, WA 98052
LEASE RATE	\$2.10 Office / \$1.40 WH
NNN	\$0.37/SF
HVAC	In office
CLEAR HEIGHT	16'
PARKING	3.5/1000
LOADING	Grade level

**AVAILABILITES**

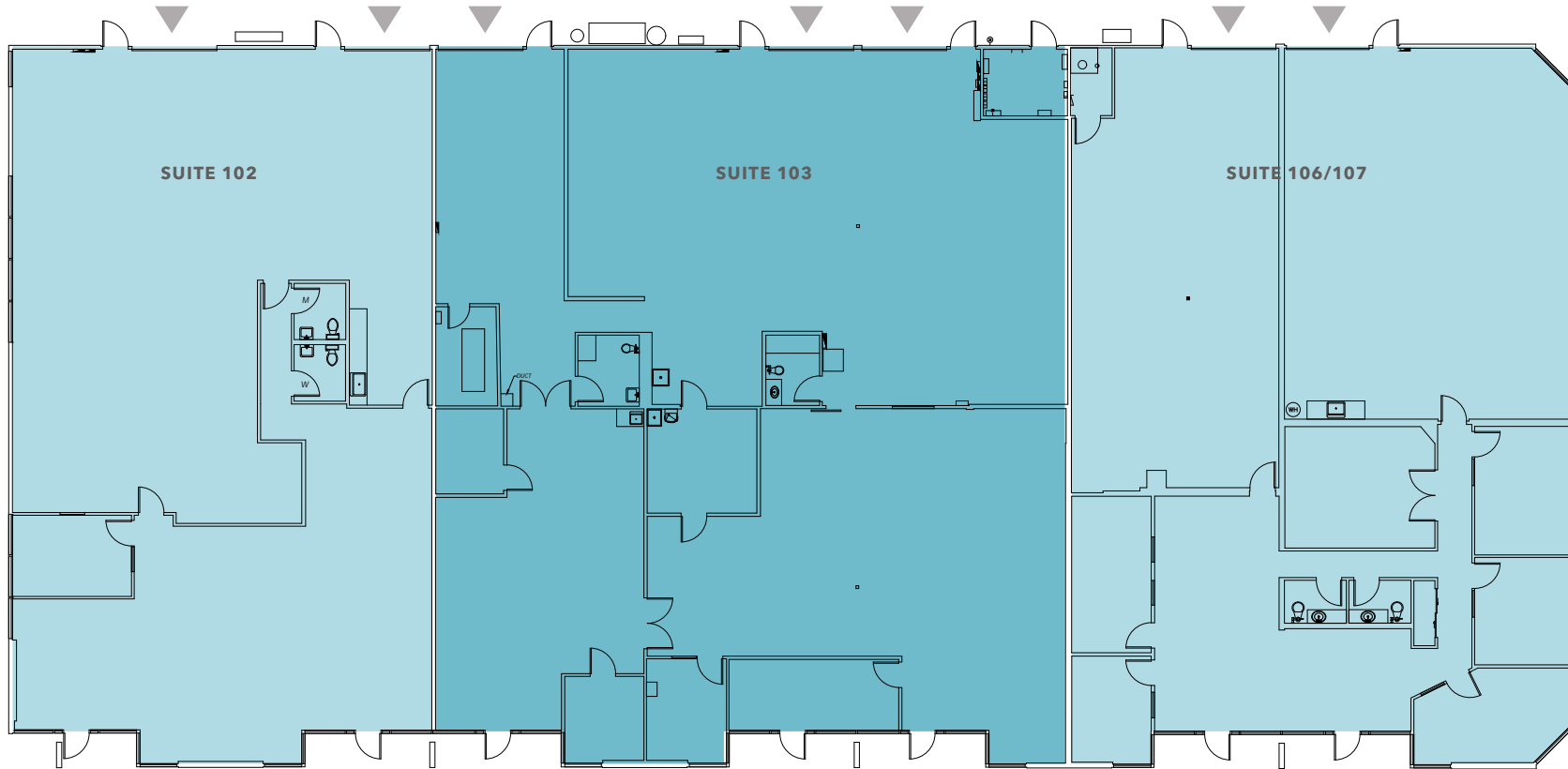
Building A	Office	Warehouse	Total
SUITE 102	1,741 SF	2,439 SF	<b>4,180 SF</b>
SUITE 103	3,026 SF	3,128 SF	<b>6,154 SF</b>
SUITE 106/107	2,126 SF	2,847 SF	<b>4,973 SF</b>
Building B	Office	Warehouse	Total
SUITE 102/103	1,318 SF	2,789 SF	<b>4,107 SF</b>

**\$2.10**  
OFFICE

**\$1.40**  
WAREHOUSE

**\$0.37**  
NNN (EST. 2025)

# BUILDING A - FLOOR PLAN

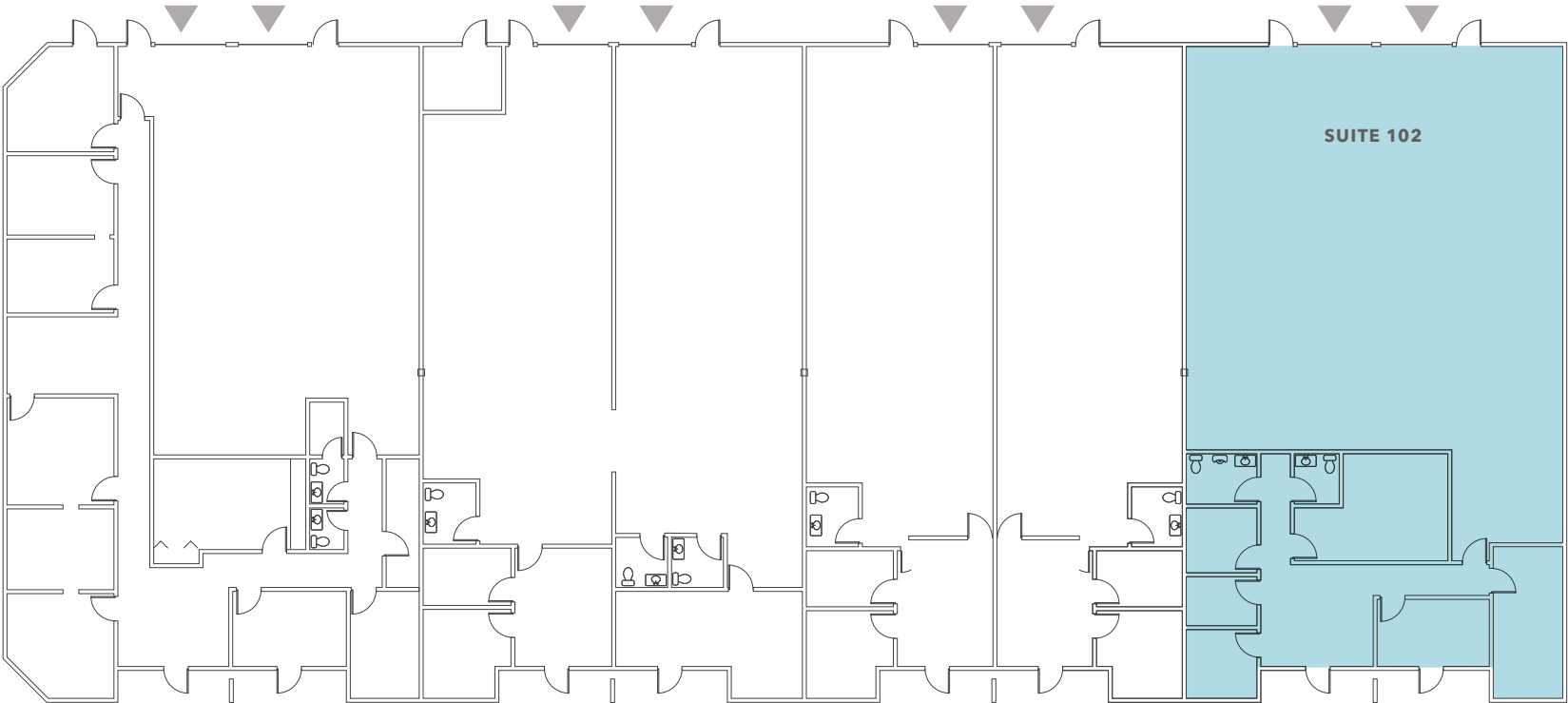


Building A	Office	Warehouse	Total	Available Date
SUITE 102	1,741 SF	2,439 SF	<b>4,180 SF</b>	03/01/2025
SUITE 103	3,026 SF	3,128 SF	<b>6,154 SF</b>	03/01/2025
SUITE 106/107	2,126 SF	2,847 SF	<b>4,973 SF</b>	06/01/2025

▲ Grade-level loading



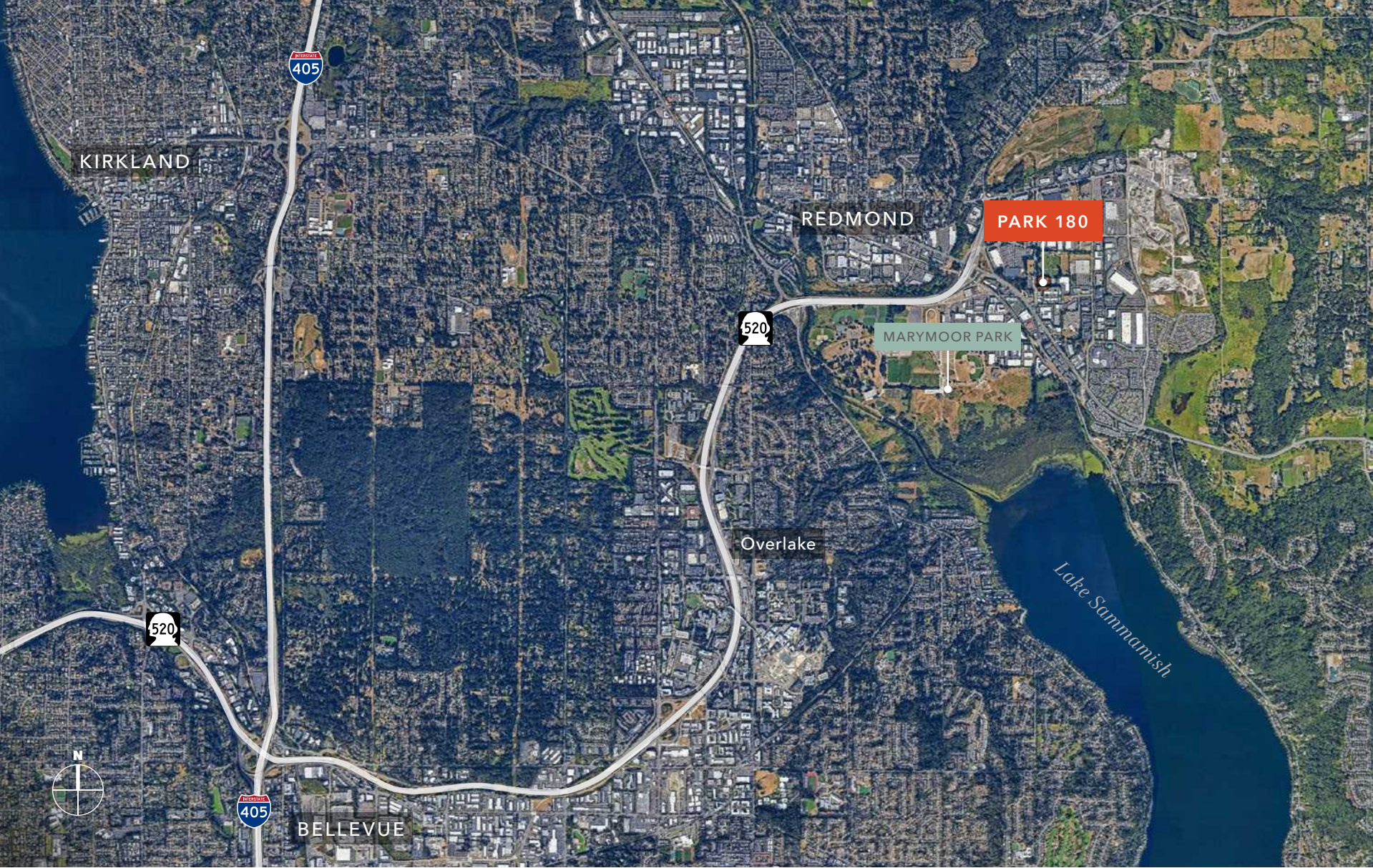
# BUILDING B - FLOOR PLAN



Building B	Office	Warehouse	Total	Available Date
SUITE 102	1,318 SF	2,789 SF	<b>4,107 SF</b>	04/01/25

▲ Grade-level loading







## PARK 180

---

*For more information about  
this property, please contact*

**TODD GAUTHIER**  
Executive Vice President  
425.450.1118  
todd.gauthier@kidder.com

**JASON BLOOM**  
Executive Vice President  
425.450.1102  
jason.bloom@kidder.com

**JACK ALBRECHT**  
Associate Vice President  
425.450.1114  
jack.albrecht@kidder.com

[KIDDER.COM](http://KIDDER.COM)

This information supplied herein is from sources we deem reliable. It is provided without any representation, warranty, or guarantee, expressed or implied as to its accuracy. Prospective Buyer or Tenant should conduct an independent investigation and verification of all matters deemed to be material, including, but not limited to, statements of income and expenses. Consult your attorney, accountant, or other professional advisor. All Kidder Mathews designs are the sole property of Kidder Mathews. Branded materials and layouts are not authorized for use by any other firm or person.

