

# NORTHLAKE PLAZA

936 N 34TH STREET, SEATTLE, WA

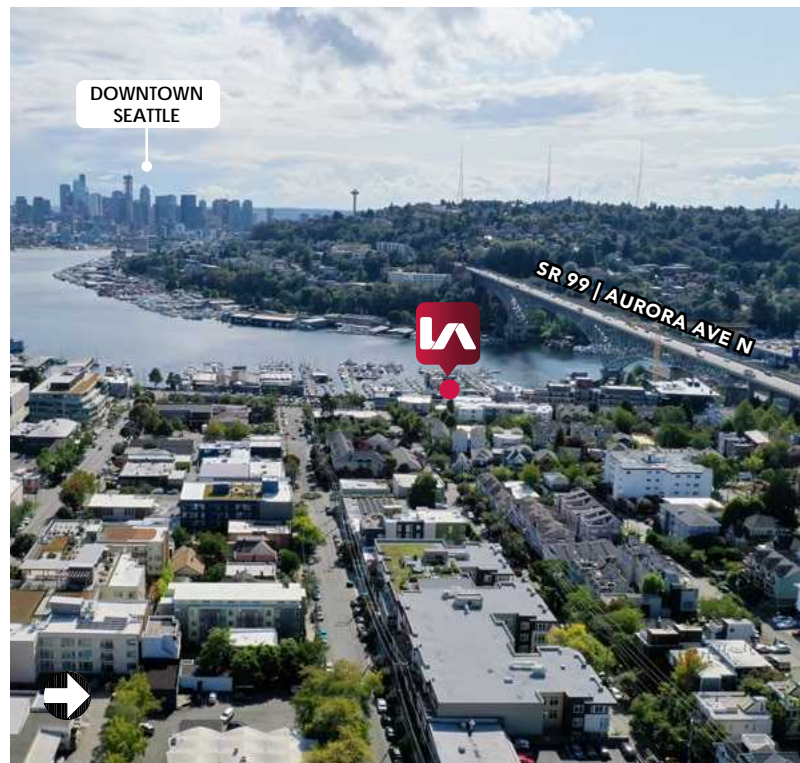


## LISTING INFORMATION

<b>SUITE 205:</b>	3,663 SF
<b>LEASE RATE:</b>	\$50.00/SF/Yr Full Service
<b>TOTAL BUILDING SF:</b>	31,417 SF
<b>ZONING</b>	NC2-75 (M)

## COMMENTS

- » Office space with high-end finishes and views of Lake Union.
- » 2 parking stalls per 1,000 SF rented, of which 1 per 1,000 SF is covered. \$225/month per stall reserved, secured and covered; \$195 per month per stall open
- » Walk Score of 95 - Easy walking distance to numerous restaurants and retailers
- » Bike Score of 99 - Biker's Paradise
- » Bike storage and on-site showers



# NORTHLAKE PLAZA

936 N 34TH STREET, SEATTLE, WA 98013

## INTERIOR PHOTOS



## CONTACT

**Aaron Mathieu**  
amathieu@lee-associates.com  
D 206.210.5207

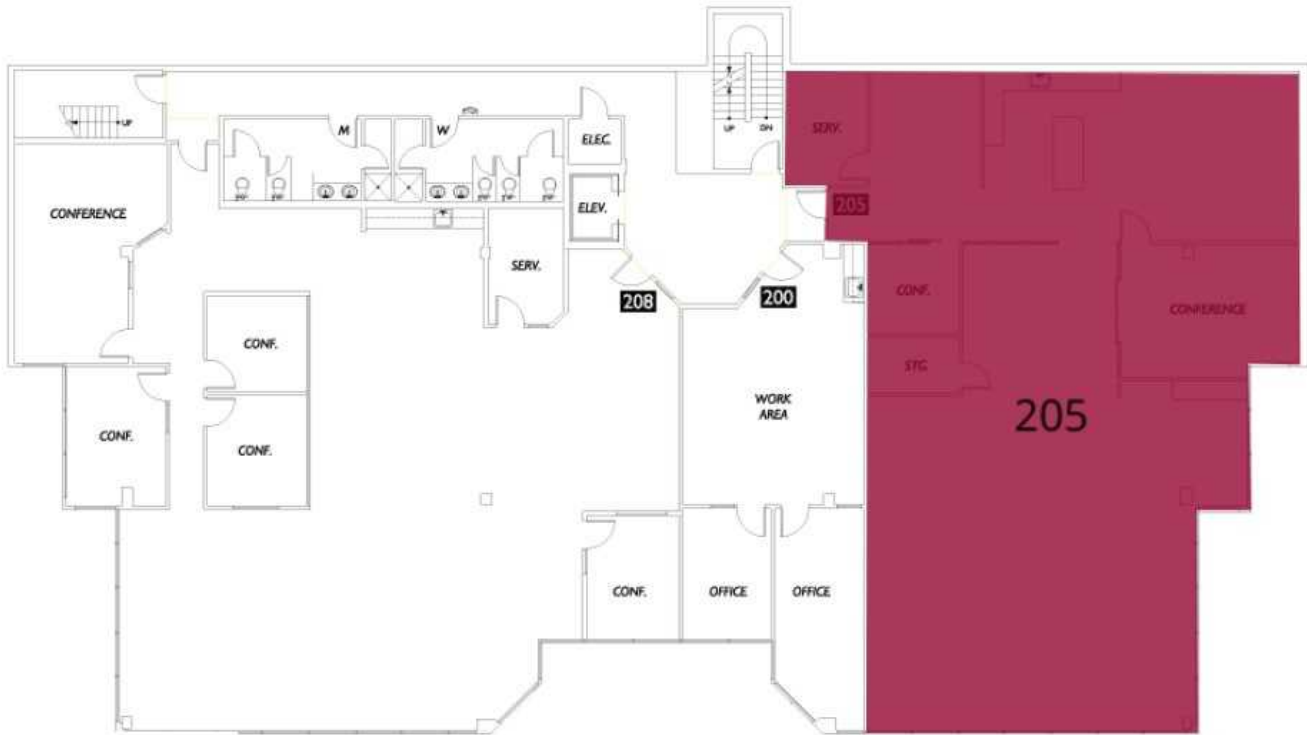
**Troy Gessel**  
tgessel@lee-associates.com  
D 425.576.8747

All information furnished regarding property for sale, rental or financing is from sources deemed reliable, but no warranty or representation is made to the accuracy thereof and same is submitted to errors, omissions, change of price, rental or other conditions prior to sale, lease or financing or withdrawal without notice. No liability of any kind is to be imposed on the broker herein.

# NORTHLAKE PLAZA

936 N 34TH STREET, SEATTLE, WA 98013

## FLOOR PLAN



### AVAILABLE SPACE

SUITE	SIZE (SF)	LEASE TYPE	LEASE RATE
Suite 205	3,663 SF	Full Service	\$50.00 SF/yr

### CONTACT

**Aaron Mathieu**  
amathieu@lee-associates.com  
D 206.210.5207

**Troy Gessel**  
tgessel@lee-associates.com  
D 425.576.8747

All information furnished regarding property for sale, rental or financing is from sources deemed reliable, but no warranty or representation is made to the accuracy thereof and same is submitted to errors, omissions, change of price, rental or other conditions prior to sale, lease or financing or withdrawal without notice. No liability of any kind is to be imposed on the broker herein.