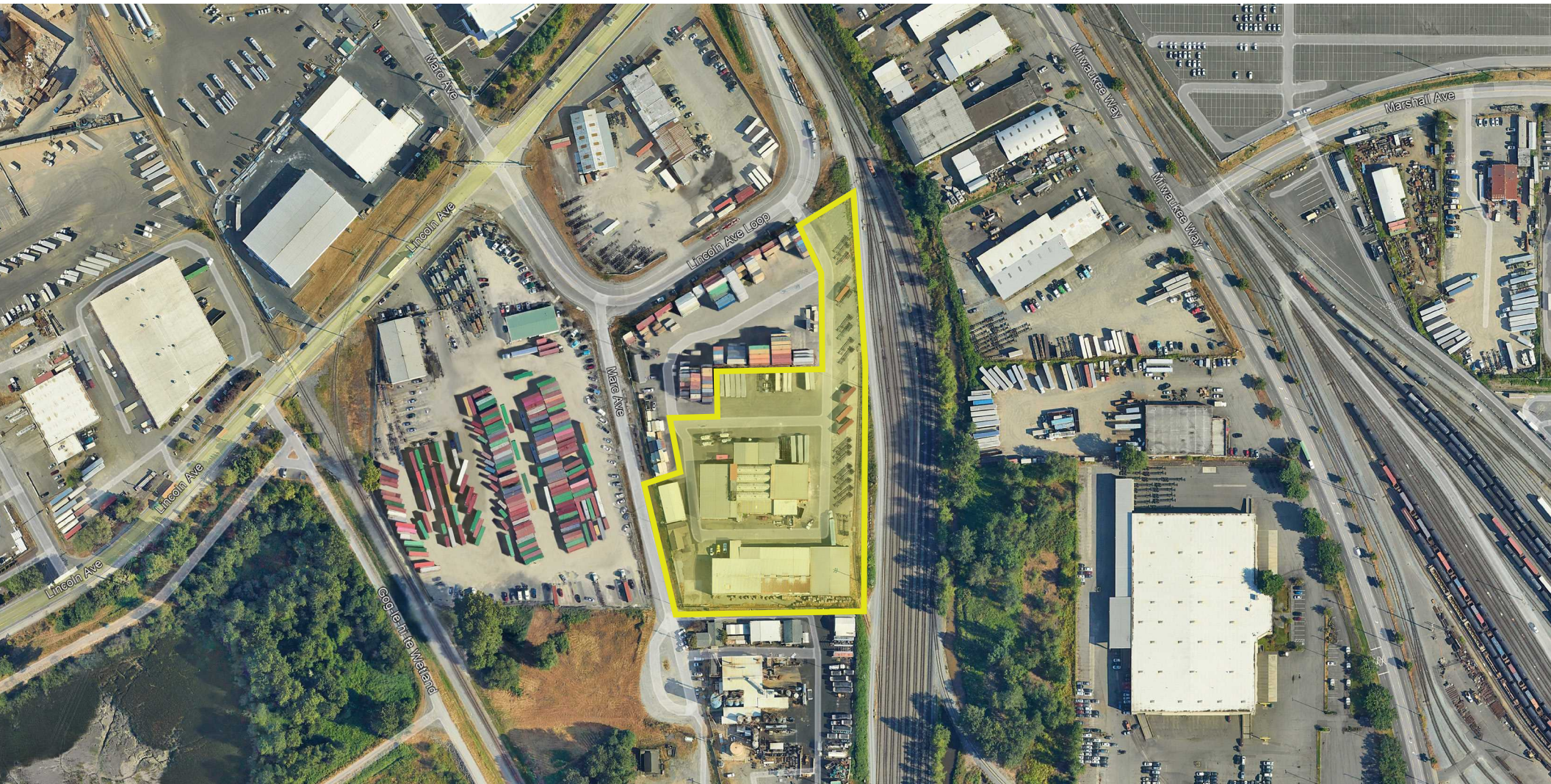
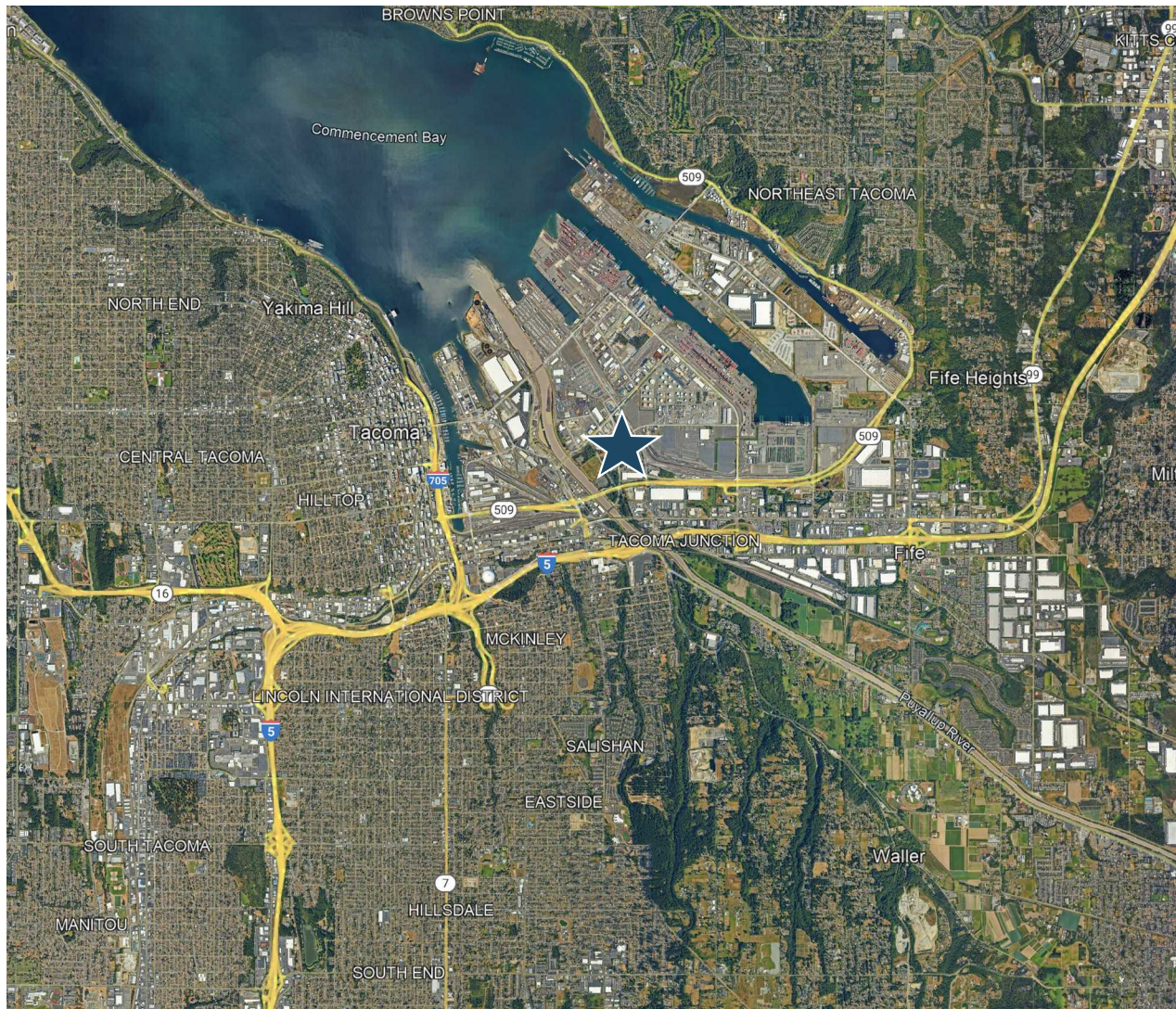


2021 MARC AVE TACOMA, WA FOR SUBLEASE | 4.72 AC



2021 MARC AVE TACOMA, WA FOR SUBLEASE | 4.72 AC



PROPERTY DETAILS

TOTAL AVAILABLE SIZE
4.72 AC (205,867 SF)

OFFICE SIZE
1,400 SF Free-standing

BUILDINGS
55,000 SF (four industrial, metal buildings)

LOADING
Grade Level with a Dock Platform

RAIL
Active Rail Spur (Union Pacific Line)

ZONING
Port Maritime Industrial (PMI)

SUBLEASE TERM THROUGH AUGUST 31, 2026
-DIRECT DEAL POSSIBLE

CONTAINER STACKING ALLOWED WITHIN ZONING

SHARED ACCESS

FULLY FENCED

The information contained herein has been obtained from sources deemed reliable but has not been verified and no guarantee, warranty or representation, either express or implied, is made with respect to such information. Terms of sale or lease and availability are subject to change or withdrawal without notice.