

FOR LEASE



# THE BAKER BUILDING

EVERETT, WASHINGTON  
Broadway & Hewitt Avenue



TEJ ASHER  
+1 425.320.8834  
SEBASTIAN CAMACHO  
+1 510.333.0624

## OVERVIEW



COMMON AREA

### Property Highlights

Suite 206 | 2,100 SF

Rate | \$2,625/month, Gross

Lease Term | 2+ years

Amenities Open floor plan, 2 separate offices, 2 bathrooms (each with shower), kitchenette, high ceilings, skylight, windows with view of Mt. Baker

Suite 200 & 207 (Combined) | 2,682 SF






Rate | \$3,004/month

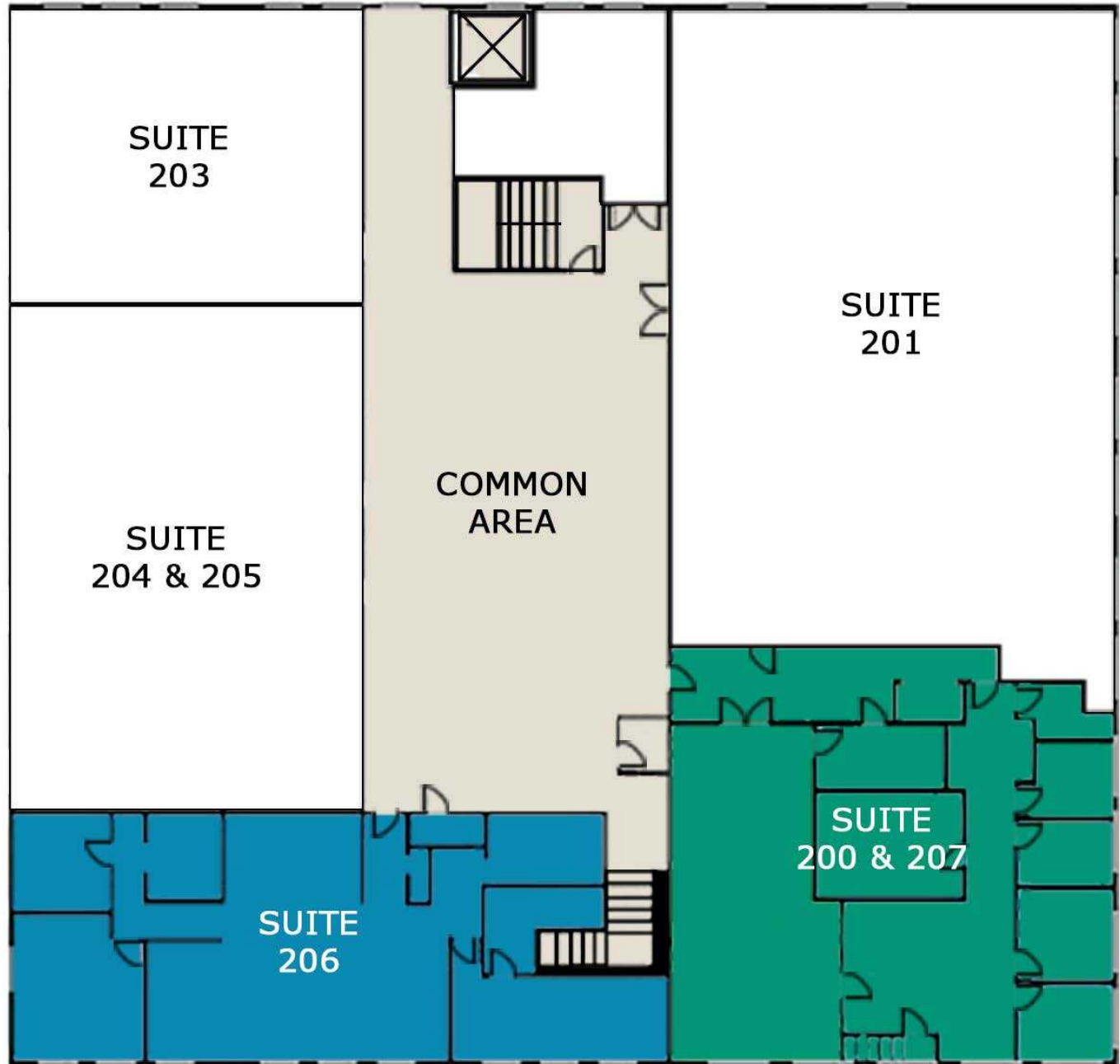
Lease Term | 2+ years

Traditional Office Buildout | 4 private offices, reception desk, separate exterior access, 2 bathrooms, kitchen, and a 1,100 SF conference room

# FLOOR PLAN | THIRD FLOOR

Suite	Tenant	Size
200 & 207	AVAILABLE	2,682 SF
201	Phoenix Art Restoration	3,100 SF
202	Valerie Blake Photos	425 SF
203	Brea Bursch	1,000 SF
204 & 205	IJ Photography	2,226 SF
206	AVAILABLE	2,100 SF

-  15,000 SF
-  Large Common Area
-  1 Freight Elevator
-  Recently Renovated
-  Primarily Office



INTERIOR IMAGES | SUITE 206



INTERIOR IMAGES | SUITE 200 & 207





## AREA OVERVIEW

# EVERETT SNAPSHOT

### CITY DETAILS

State	Washington
County	Snohomish County
Mayor	Cassie Franklin
Incorporated	May 4, 1893
Website:	<a href="http://www.everettwa.gov">www.everettwa.gov</a>



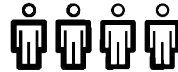
**36.4**

YEARS OLD  
MEDIAN AGE



**43,480**

NO OF  
HOUSEHOLDS



**849,070**

SNOHOMISH COUNTY  
2024 POPULATION



**\$77,806**

MEDIAN HOUSEHOLD  
INCOME



**\$640,377**

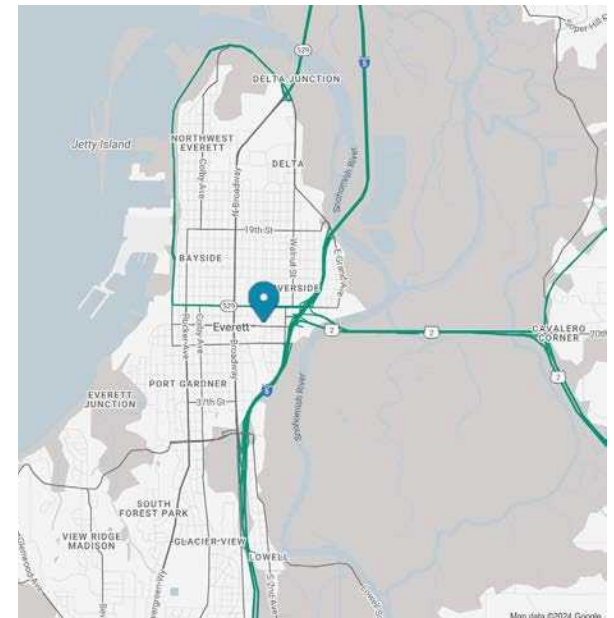
MEDIAN PROPERTY  
VALUE



**63.7%**

HOME OWNERSHIP  
RATE

Everett, WA is located 25 miles north of Seattle on tranquil Port Gardner Bay, equal parts charming coastal hamlet & thriving commercial hub. Everett enjoys one of the most enviable locales in the PNW & an outstanding quality of life. As the Snohomish county Seat, Everett is the County's largest city and the area's center for economic development.





Tej Asher  
+1 425.320.8834  
tasher@fwp-inc.com

Sebastian Camacho  
+1 510.333.0624  
sebastian@fwp-inc.com

First Western Properties, Inc.  
11621 97th Lane NE  
Kirkland, WA 98034

O: +1 425.822.5522

---

[www.fwp-inc.com](http://www.fwp-inc.com)