

FOR LEASE



24860 Pacific Hwy S, Suite 102

Kent, WA 98032

Prime office / retail space located on Pacific Highway S in Kent.

PROPERTY HIGHLIGHTS

- + Newer building on Pacific Hwy S (SR 99), in Kent
- + Open floor plan with private bathroom
- + May be combined with Suite 103 for 1,927 SF
- + Reader board / pole signage
- + Ample on-site parking
- + Estimated 2024 NNN: \$4.84/SF

BRUCE GOLDSTEIN

Senior Vice President
+1 425 586 5632
bgoldstein@nai-psp.com



THE INFORMATION CONTAINED HEREIN HAS BEEN GIVEN TO US BY THE OWNER OF THE PROPERTY OR OTHER SOURCES WE DEEM RELIABLE. WE HAVE NO REASON TO DOUBT ITS ACCURACY, BUT WE DO NOT GUARANTEE IT. ALL INFORMATION SHOULD BE VERIFIED PRIOR TO PURCHASE OR LEASE.

TOTAL SF

833 SF

PRICE/SF

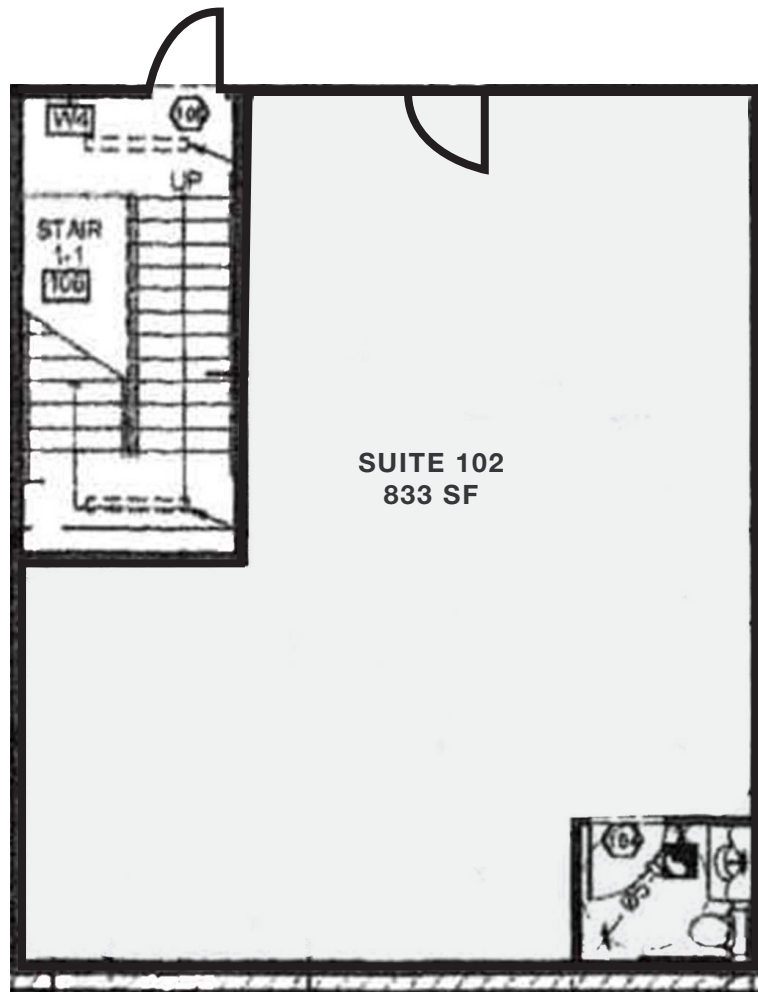
\$20.00

TYPE

NNN

nai-psp.com

Floor Plan

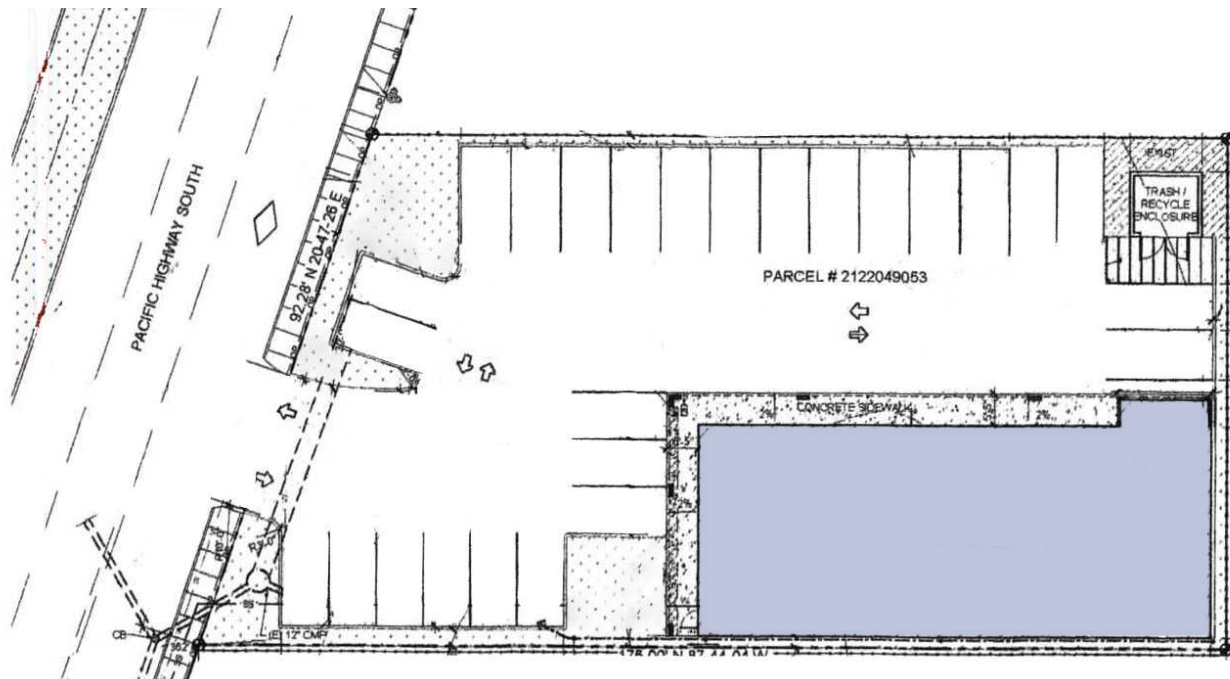


BRUCE GOLDSTEIN
Senior Vice President
+1 425 586 5632
bgoldstein@nai-pp.com





Site Plan



BRUCE GOLDSTEIN
Senior Vice President
+1 425 586 5632
bgoldstein@nai-psp.com

