



KENT SHOP WITH YARD

*Shop Building with Outside Storage
off WA-167 at S 212th St*

8810 S 208TH ST | KENT, WA

17,200 SF

TOTAL BUILDING AREA

6,900 SF

OFFICE

50,000 SF

YARD AREA

3,600 SF

COVERED STORAGE AREA



Property Details

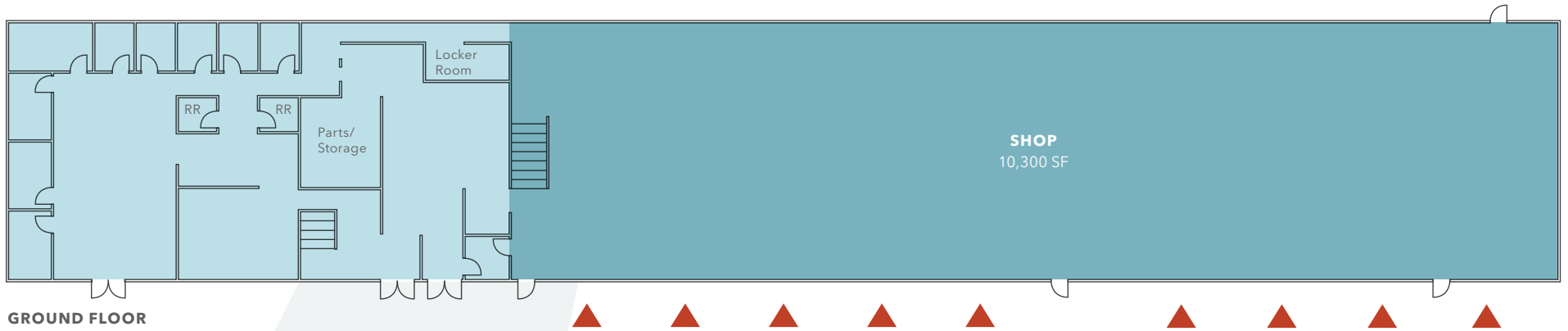
ADDRESS	8810 S 208th St, Kent, WA 98031
BUILDING SIZE	17,200 SF
OFFICE	6,900 SF
YARD SIZE	50,000 SF
COVERED STORAGE	3,600 SF
POWER	3-phase
HVAC	A/C office
WASH AREA	Wash down area with oil/water separator
CLEAR HEIGHT	20'
GL LOADING	9
ZONING	I-2, City of Kent

Ideal Property Use:

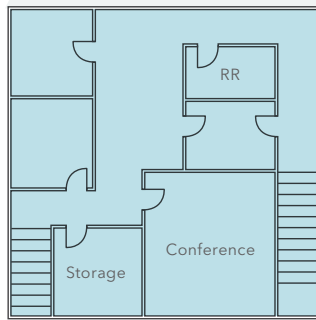
- Heavy equipment rental
- Large general contractor
- Large construction supply house



FLOORPLAN



GROUND FLOOR



SECOND FLOOR



17,200 SF

TOTAL BUILDING AREA

4,700 SF

GROUND FLOOR OFFICE

2,200 SF

SECOND FLOOR OFFICE

10,300 SF

SHOP AREA

▲ Grade-level loading

*Floorplan not to scale





8810 S 208TH ST, KENT

For more information about this property, please contact

MATTHEW P. HENN
Kidder Mathews
206.890.7800
matt.henn@kidder.com

MATT WOOD, SIOR
KBC Advisors
206.595.6814
matt.wood@kbcadvisors.com



This information supplied herein is from sources we deem reliable. It is provided without any representation, warranty, or guarantee, expressed or implied as to its accuracy. Prospective Buyer or Tenant should conduct an independent investigation and verification of all matters deemed to be material, including, but not limited to, statements of income and expenses. Consult your attorney, accountant, or other professional advisor. All Kidder Mathews designs are the sole property of Kidder Mathews. Branded materials and layouts are not authorized for use by any other firm or person.

