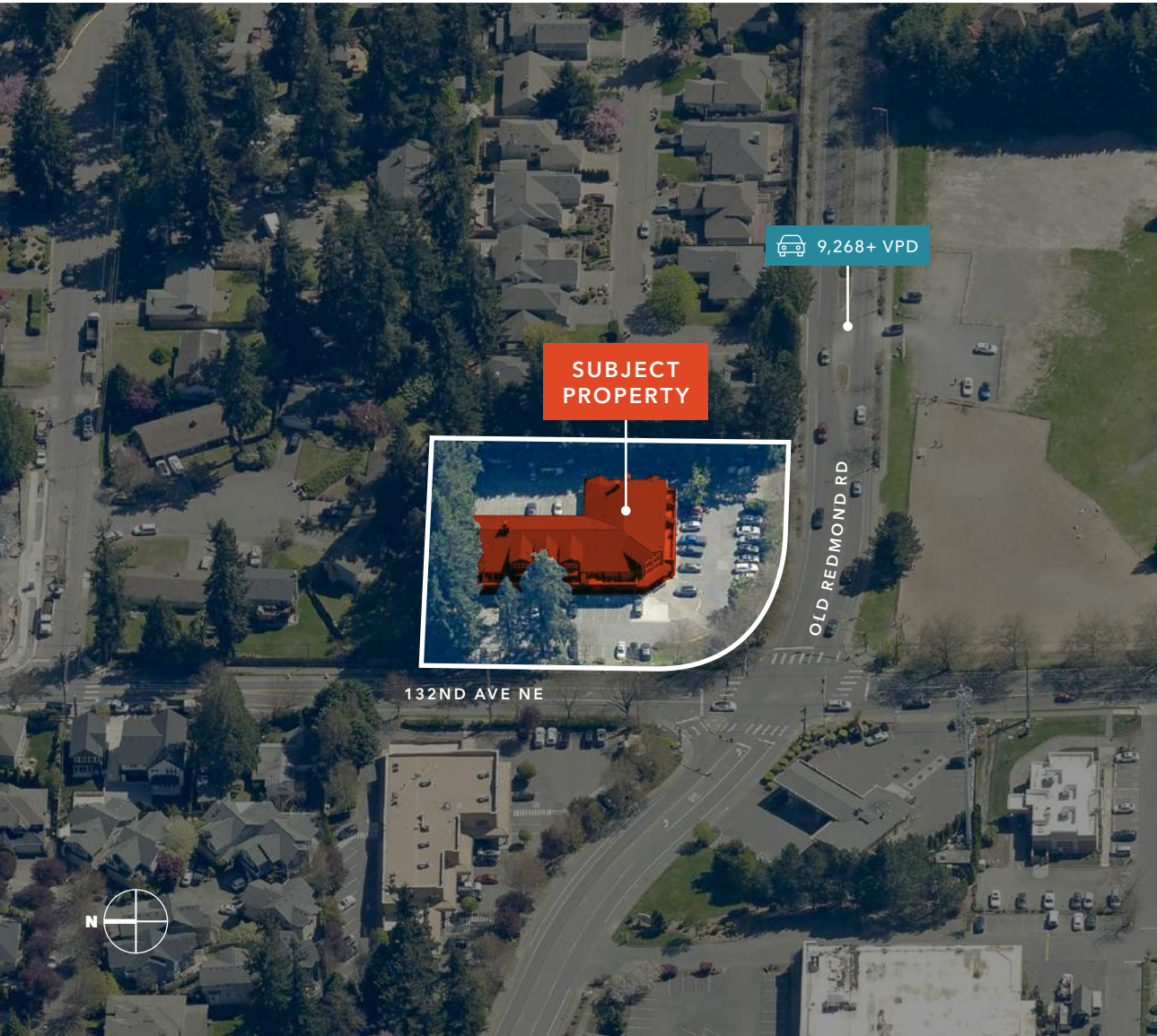




LA PIAZZA RETAIL

Retail space available for lease in a neighborhood center located in the Bridle Trails community

13200 OLD REDMOND RD, REDMOND, WA



A neighborhood center located on a signalized intersection with high traffic counts and strong area demographics.

1,125 SF retail space available

Easy access to I-405

Located near Google Campus, Bridle Trails State Park, and Bellevue Golf Course

9,268+ daily vehicles on Old Redmond Rd

\$35.00/SF lease rate

\$11.00/SF NNN rate

BRAD BISSELL

425.450.1182

brad.bissell@kidder.com



KIDDER.COM

This information supplied herein is from sources we deem reliable. It is provided without any representation, warranty, or guarantee, expressed or implied as to its accuracy. Prospective Buyer or Tenant should conduct an independent investigation and verification of all matters deemed to be material, including, but not limited to, statements of income and expenses. Consult your attorney, accountant, or other professional advisor. All Kidder Mathews designs are the sole property of Kidder Mathews. Branded materials and layouts are not authorized for use by any other firm or person.

DEMOGRAPHICS

POPULATION

	1 Mile	3 Miles	5 Miles
2020 CENSUS	13,090	111,539	274,810
2024 ESTIMATED	13,293	115,425	281,769
2029 PROJECTED	13,399	122,866	293,259
ANNUAL GROWTH 2024 - 2029	0.2%	1.3%	0.8%

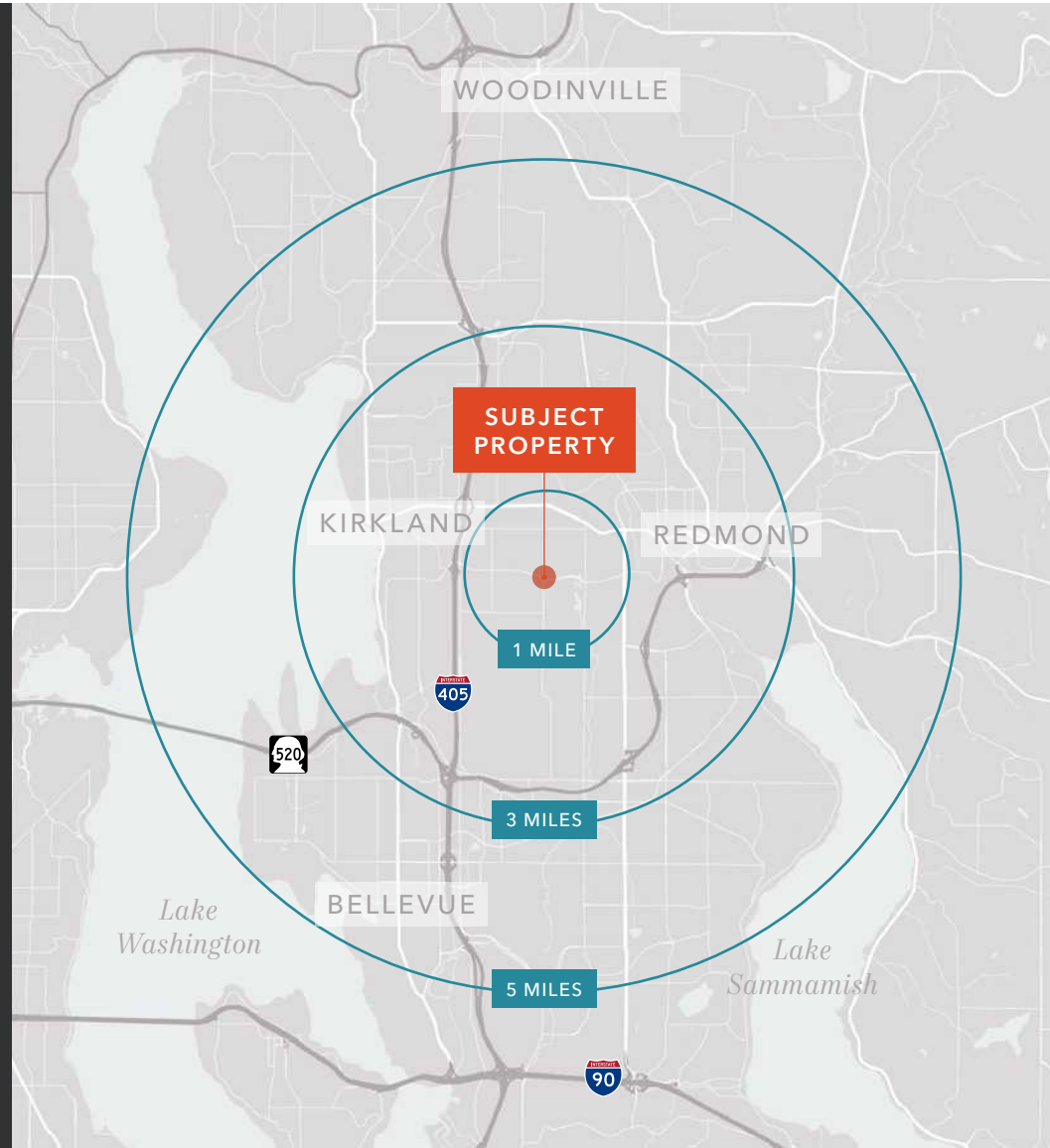
HOUSEHOLDS

	1 Mile	3 Miles	5 Miles
2024 ESTIMATED	5,060	51,487	120,940
2029 PROJECTED	5,025	55,251	125,818
ANNUAL GROWTH 2024 - 2029	-0.1%	1.5%	0.8%

HOUSEHOLD INCOME

	1 Mile	3 Miles	5 Miles
2024 MEDIAN	\$176,365	\$172,713	\$169,612
2029 MEDIAN PROJECTED	\$185,493	\$178,850	\$175,004
2024 AVERAGE	\$268,294	\$244,977	\$241,074
2029 AVERAGE PROJECTED	\$287,102	\$257,246	\$253,630

Data Source: ©2024, Sites USA



KIDDER.COM

This information supplied herein is from sources we deem reliable. It is provided without any representation, warranty, or guarantee, expressed or implied as to its accuracy. Prospective Buyer or Tenant should conduct an independent investigation and verification of all matters deemed to be material, including, but not limited to, statements of income and expenses. Consult your attorney, accountant, or other professional advisor. All Kidder Mathews designs are the sole property of Kidder Mathews. Branded materials and layouts are not authorized for use by any other firm or person.