

SUBLEASE FLOORS 19, 23, 24 & 27
1201 SECOND AVENUE, SEATTLE, WA

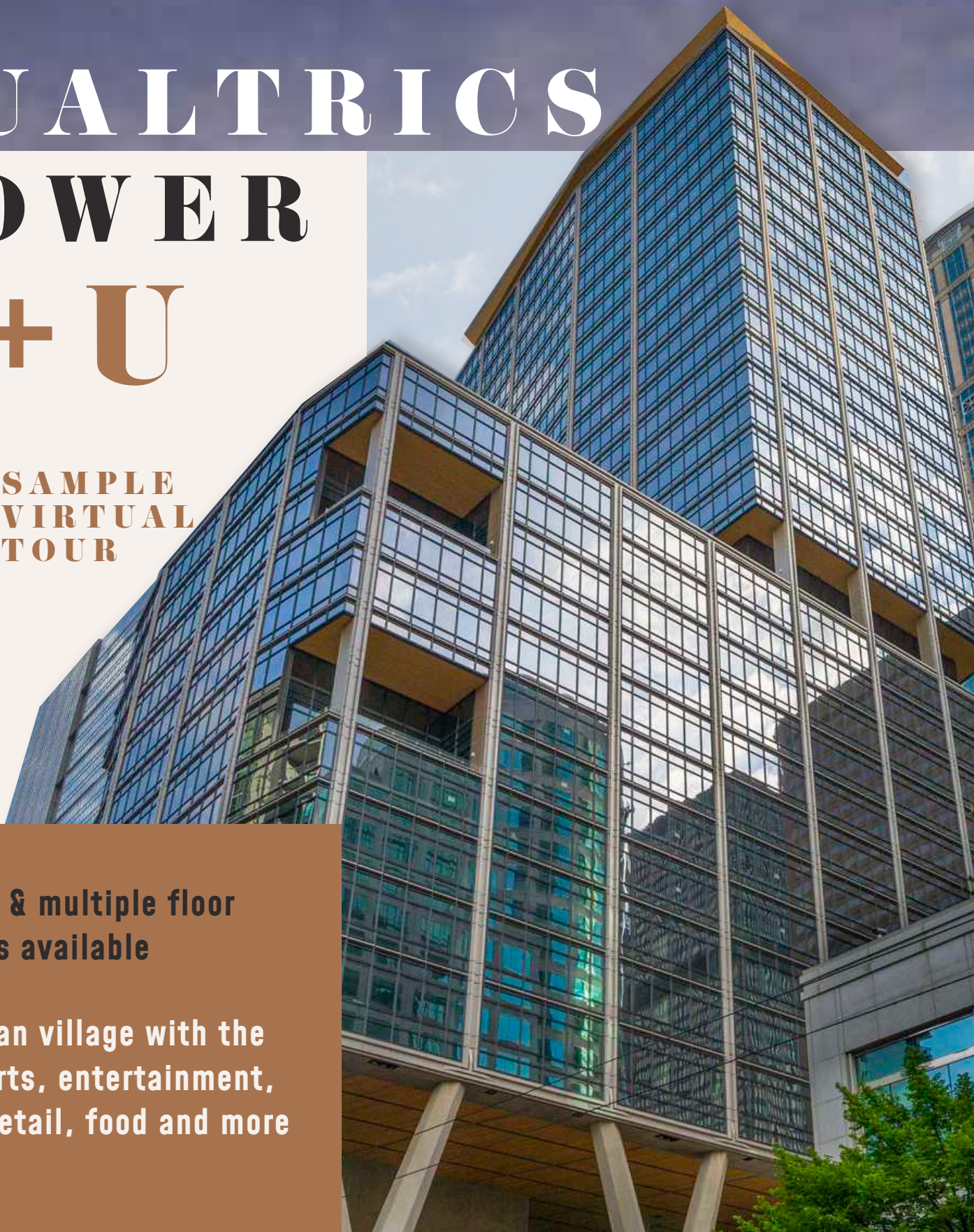
QUALTRICS TOWER 2 + U



**SAMPLE
VIRTUAL
TOUR**

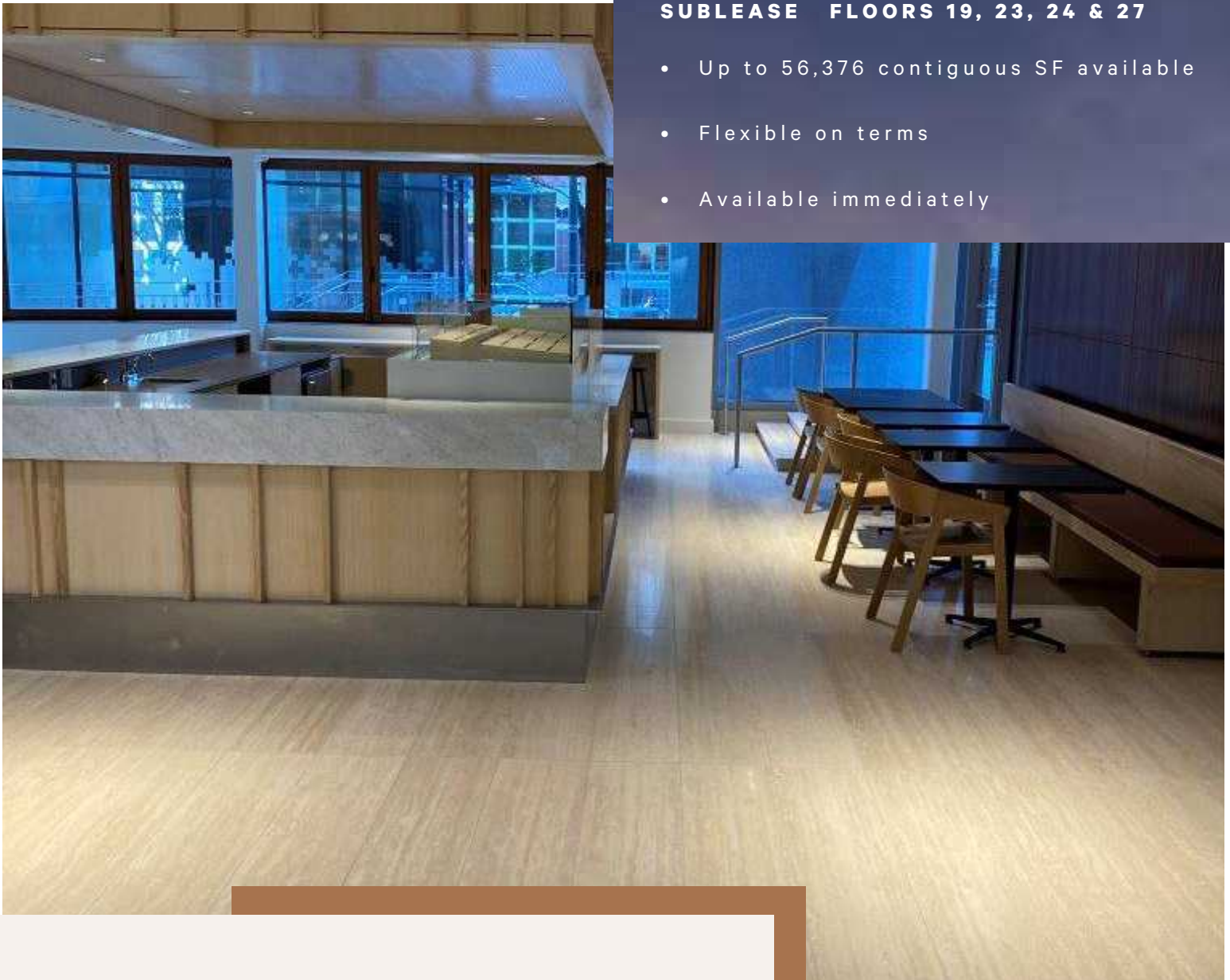
**Full floor & multiple floor
subleases available**

**Open urban village with the
best in arts, entertainment,
events, retail, food and more**

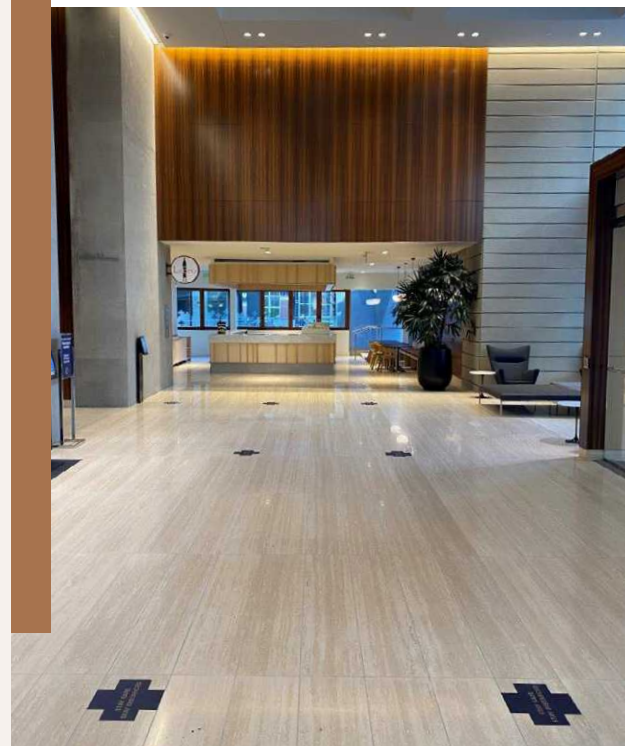


SUBLEASE FLOORS 19, 23, 24 & 27

- Up to 56,376 contiguous SF available
- Flexible on terms
- Available immediately

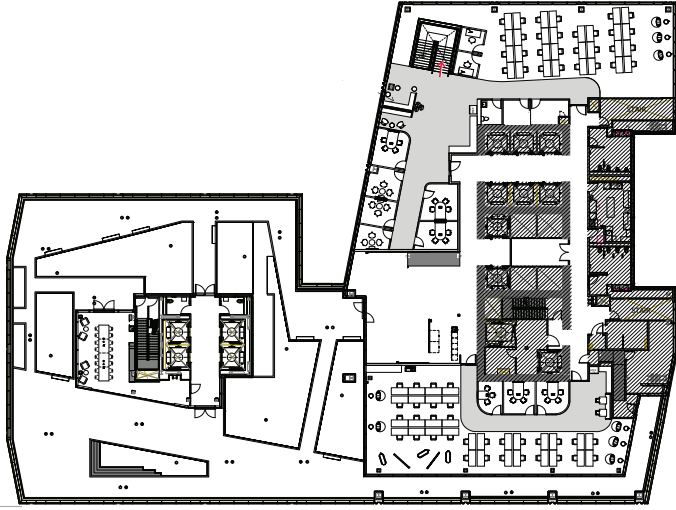


- Open urban village with the best of the Pacific Northwest in arts, entertainment, events, retail, food and more
- Multiple unique tenant event spaces
- Easy commuter access from the highway or to public transit including bus, light rail, and ferries
- Tenant view deck
- Bike club, storage and service stations
- Fitness and yoga studio
- Efficient parking, valet services and EV charging stations
- High touch, concierge-style property management



FLOOR 19

Suite A | 7,232 SF



FLOOR 23

Floor 23 | 18,792 SF



- 17,000 SF retail + arts & culture
- 24,000 SF covered outdoor, open space
- 13'6" floor to floor
- Estimated 10' drop ceiling at the perimeter

- An offset core and flexible, versatile floorplates
- Substantial daylight and unobstructed views



**SAMPLE
VIRTUAL
TOUR**

FLOOR 24

Floor 24 | 18,792 SF



FLOOR 27

Floor 27 | 18,792 SF



SUBLEASE FLOORS 19, 23, 24 & 27
1201 SECOND AVENUE, SEATTLE, WA

QUALTRICS

TOWER

2 + U



TONY FORD SENIOR VICE PRESIDENT +1 206 292 6014 | tony.ford@cbre.com

JOE RILEY FIRST VICE PRESIDENT +1 206 292 6015 | joe.riley1@cbre.com



**SAMPLE
VIRTUAL
TOUR**

© 2023 CBRE, Inc. All rights reserved. This information has been obtained from sources believed reliable, but has not been verified for accuracy or completeness. You should conduct a careful, independent investigation of the property and verify all information. Any reliance on this information is solely at your own risk. CBRE and the CBRE logo are service marks of CBRE, Inc. All other marks displayed on this document are the property of their respective owners, and the use of such logos does not imply any affiliation with or endorsement of CBRE. Photos herein are the property of their respective owners. Use of these images without the express written consent of the owner is prohibited. 11.19.24 CH

CBRE