

Hewitt WORKLOFTS

2210 Hewitt Ave, Everett, WA 98201

Office/Retail Suites Available For Lease

- Newly renovated common areas
- Creative workspace availabilities with a diverse tenant mix
- Historic office building in the heart of downtown Everett
- Parking: \$75/Stall/Month



NEWMARK

LEVI BUNDRANT
Associate
425.409.7405
levi.bundrant@nmrk.com

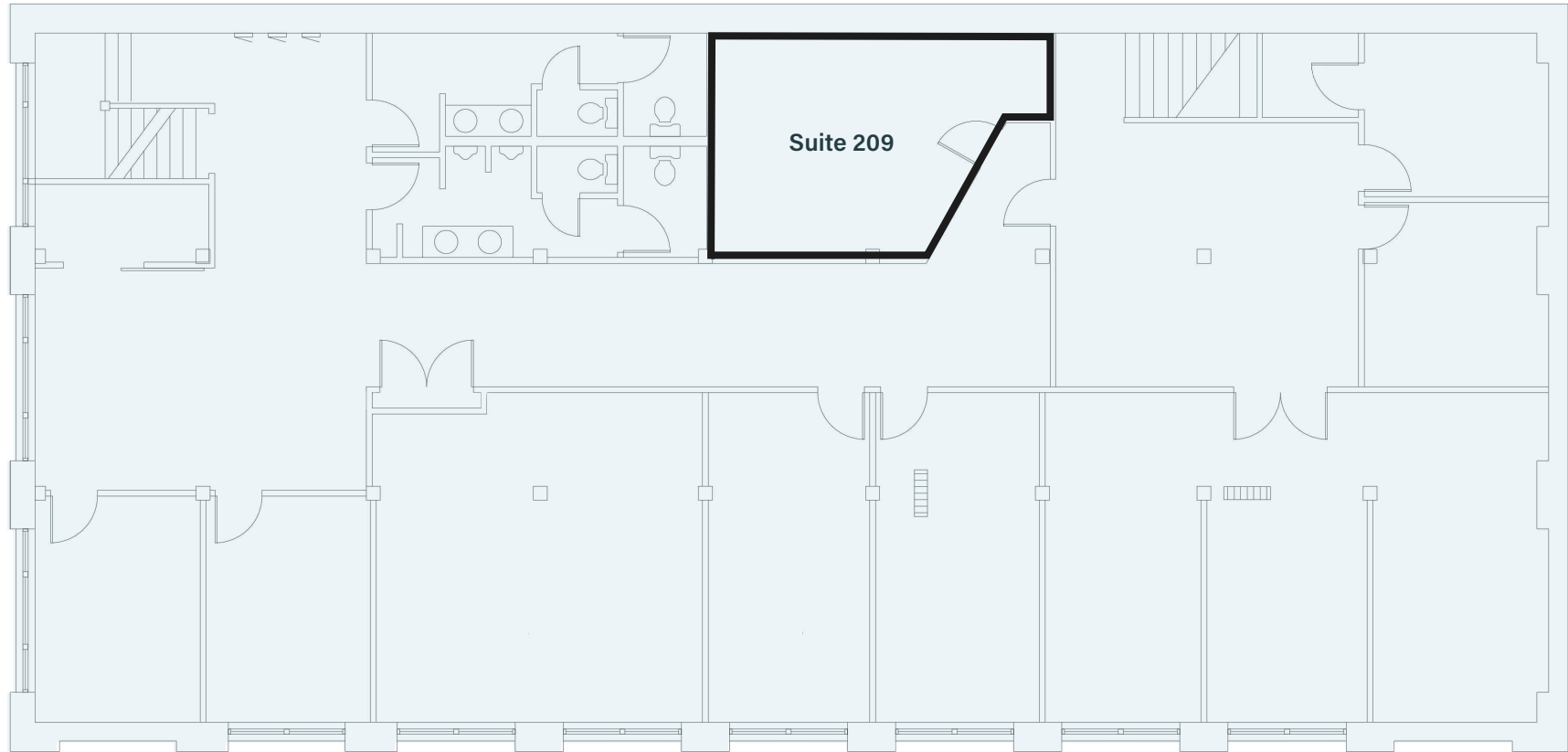
CHARLIE FARRA
Executive Vice President
206.999.2928
charlie.farra@nmrk.com

SECOND FLOOR

Suite 209

550 RSF

Office - \$25/FS



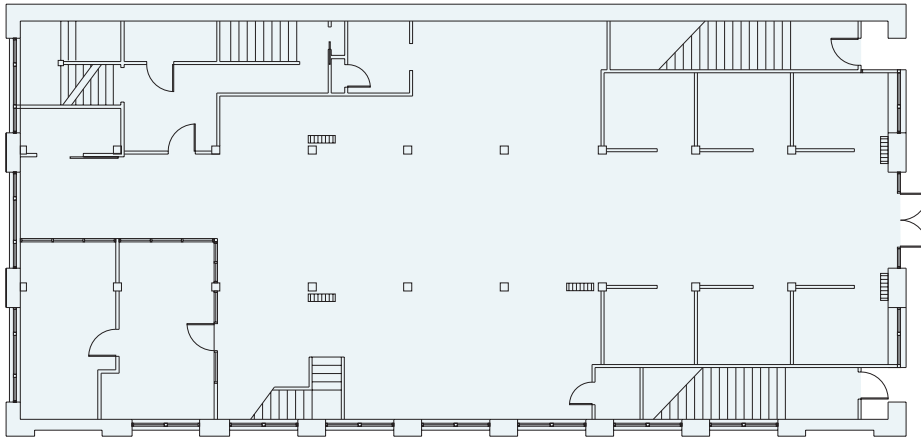
THIRD FLOOR

Suite 301

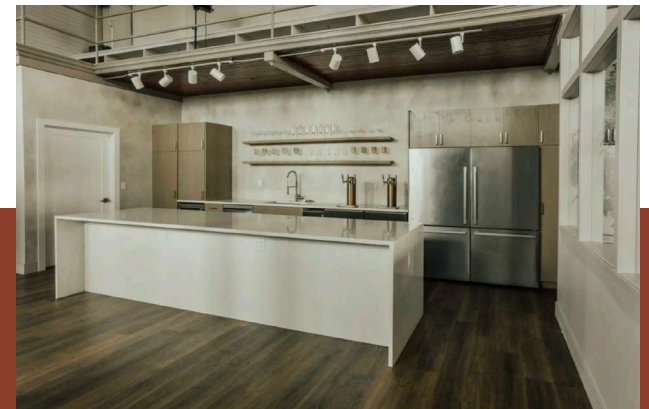
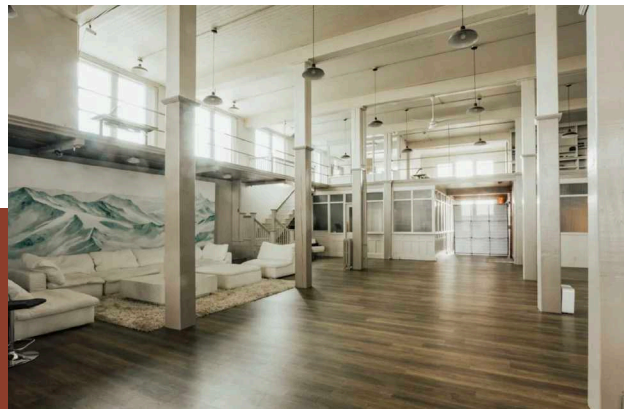
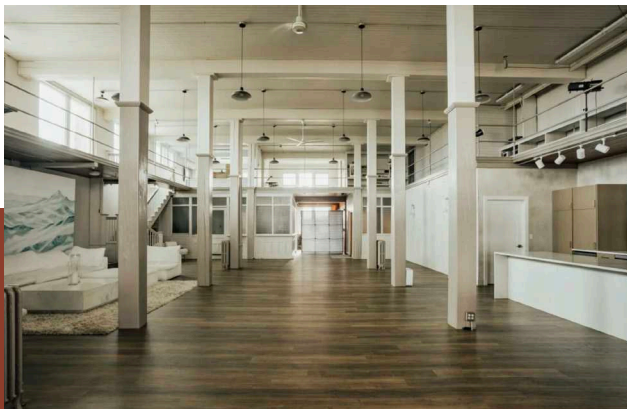
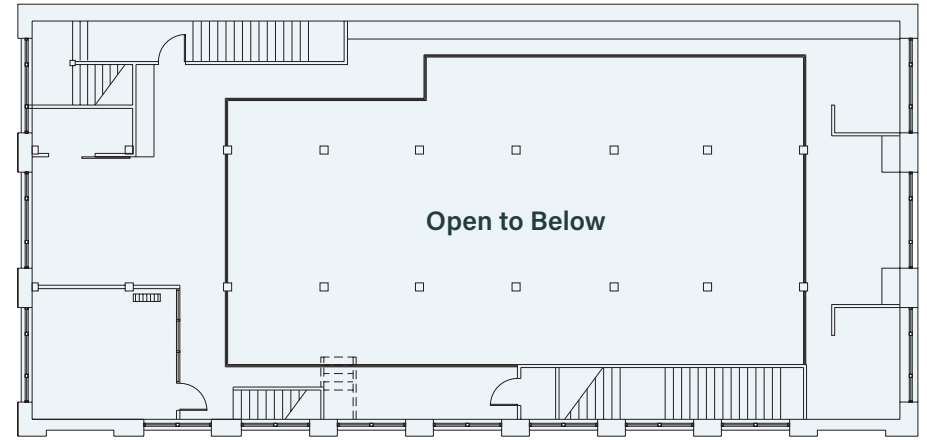
6,355 RSF

Retail - \$18/NNN

Street Level | Suite 301



Mezzanine



AMENITIES

1. **Site Location | 2210 Hewitt Ave**

2. K Fresh

3. At Large Brewing & Taproom

4. The Loft Coffee Bar

5. Cafe Makario

6. Vintage Cafe

7. Narrative Coffee

8. McDonald's

9. Taco Bell

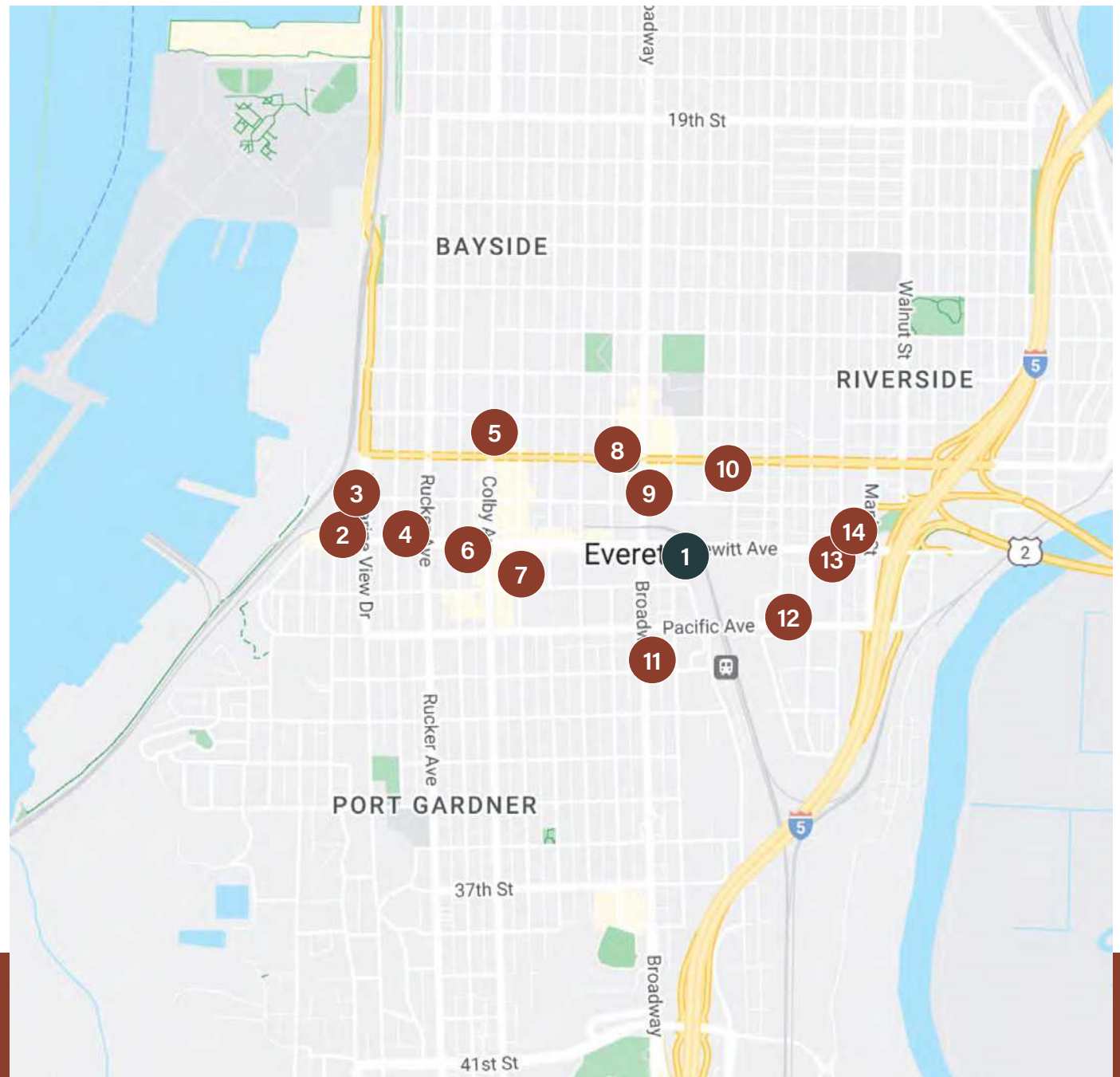
10. The Fireplace Bar

11. Buzz Inn Steakhouse

12. Lew's BBQ

13. Katana Sushi

14. Buck's American Cafe



Hewitt WORKLOFTS

2210 Hewitt Ave, Everett, WA 98201

LEVI BUNDRANT

Associate

425.409.7405

levi.bundrant@nmrk.com

CHARLIE FARRA

Executive Vice President

206.999.2928

charlie.farra@nmrk.com

NEWMARK

The information contained herein has been obtained from sources deemed reliable but has not been verified and no guarantee, warranty or representation, either express or implied, is made with respect to such information. Terms of sale or lease and availability are subject to change or withdrawal without notice.