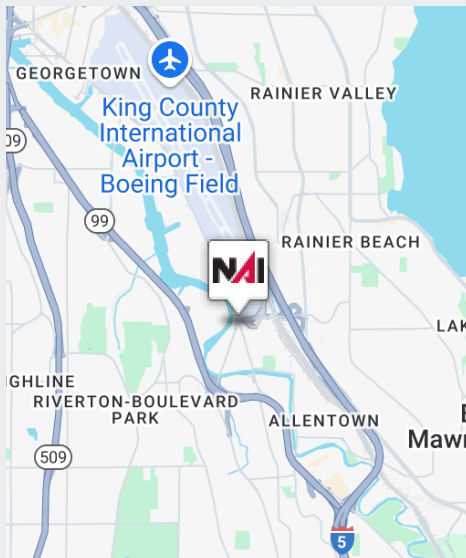




10825 E Marginal Way S

Tukwila, WA



WILL SCHMIDT

Associate Vice President
+1 206 794 0421
wschmidt@nai-psp.com

MATT LE

Associate
+1 425 586 5647
mle@nai-psp.com

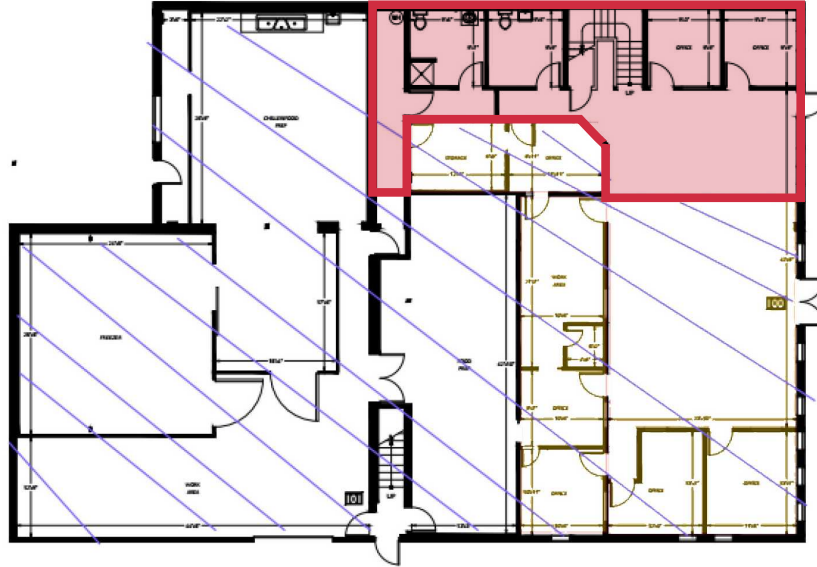
Prime Location Office Space for Lease in Tukwila

PROPERTY HIGHLIGHTS

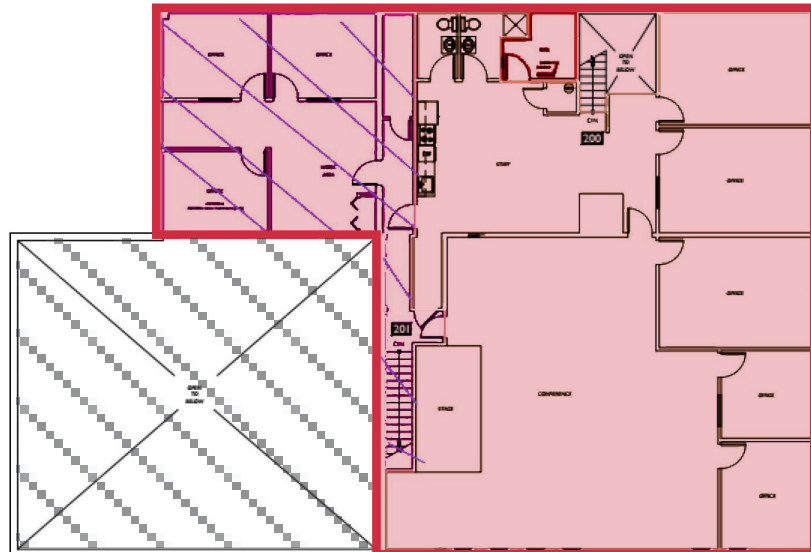
- + Two-Floor office space
- + 4,537 SF total
- + 7 Private Offices with 3 conference rooms
- + High visibility
- + Centrally located with quick access to I-5 North and South
- + \$17.00 PSF, modified gross
- + Available Now

Floor Plan

FLOOR ONE



FLOOR TWO



WILL SCHMIDT

Associate Vice President
+1 206 794 0421
wschmidt@nai-psp.com

MATT LE

Associate
+1 425 586 5647
mle@nai-psp.com

