



# SUMMIT CENTRE

13306 Canyon Rd E. • Puyallup, WA 98373

**FOR LEASE OR SALE**  
New Class A Industrial Warehouse



±95,402 SF • Divisible to ±20,000 SF



**CBRE**

# PROPERTY FEATURES



New Class A construction



20 dock-high doors (8 w/ in-pit levelers);  
4 drive-in doors



Abundant retail amenities nearby



95,402 SF building with 2,000 SF mezzanine; BTS office (3,284 SF spec design)



32' clear height;  
130' truck court



Quick access to SR-512



Divisible to ±20,000 SF with dock and grade loading to each suite



ESFR sprinklers



8 minutes to I-5;  
8 minutes to SR-167



LED lighting



1,600 AMPS 3-phase power

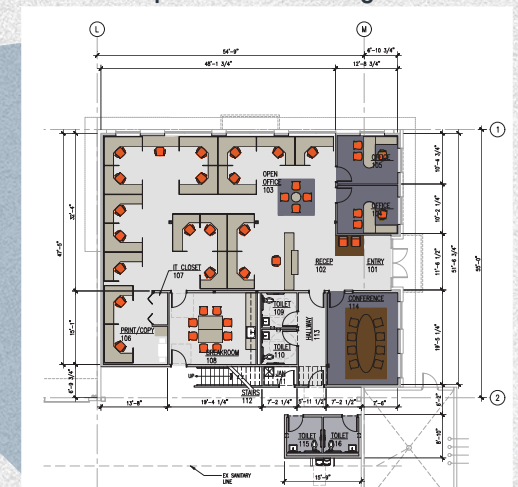


Zoning: Employment Corridor (Pierce County)

## SITE PLAN



## Spec Office Design

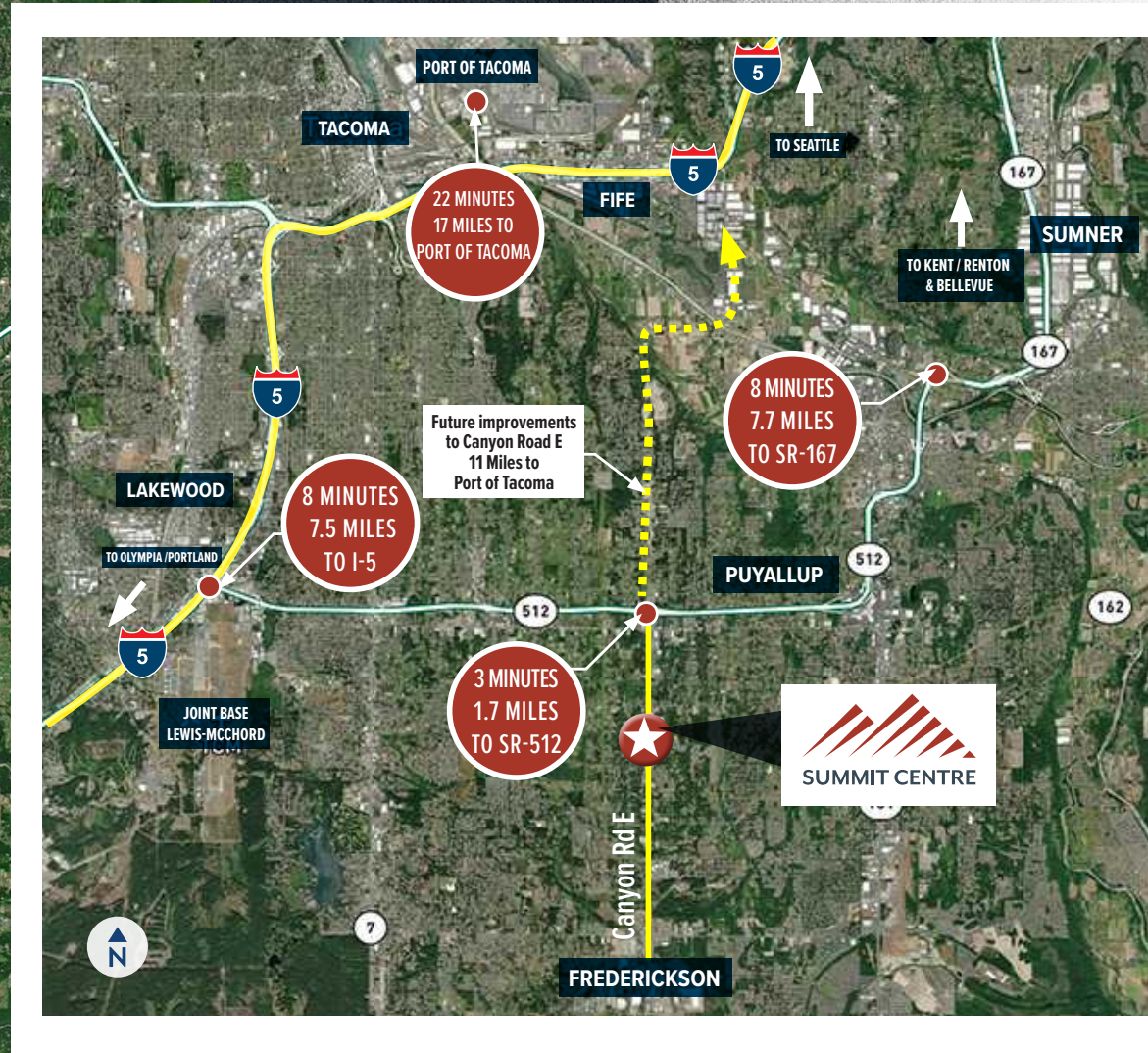
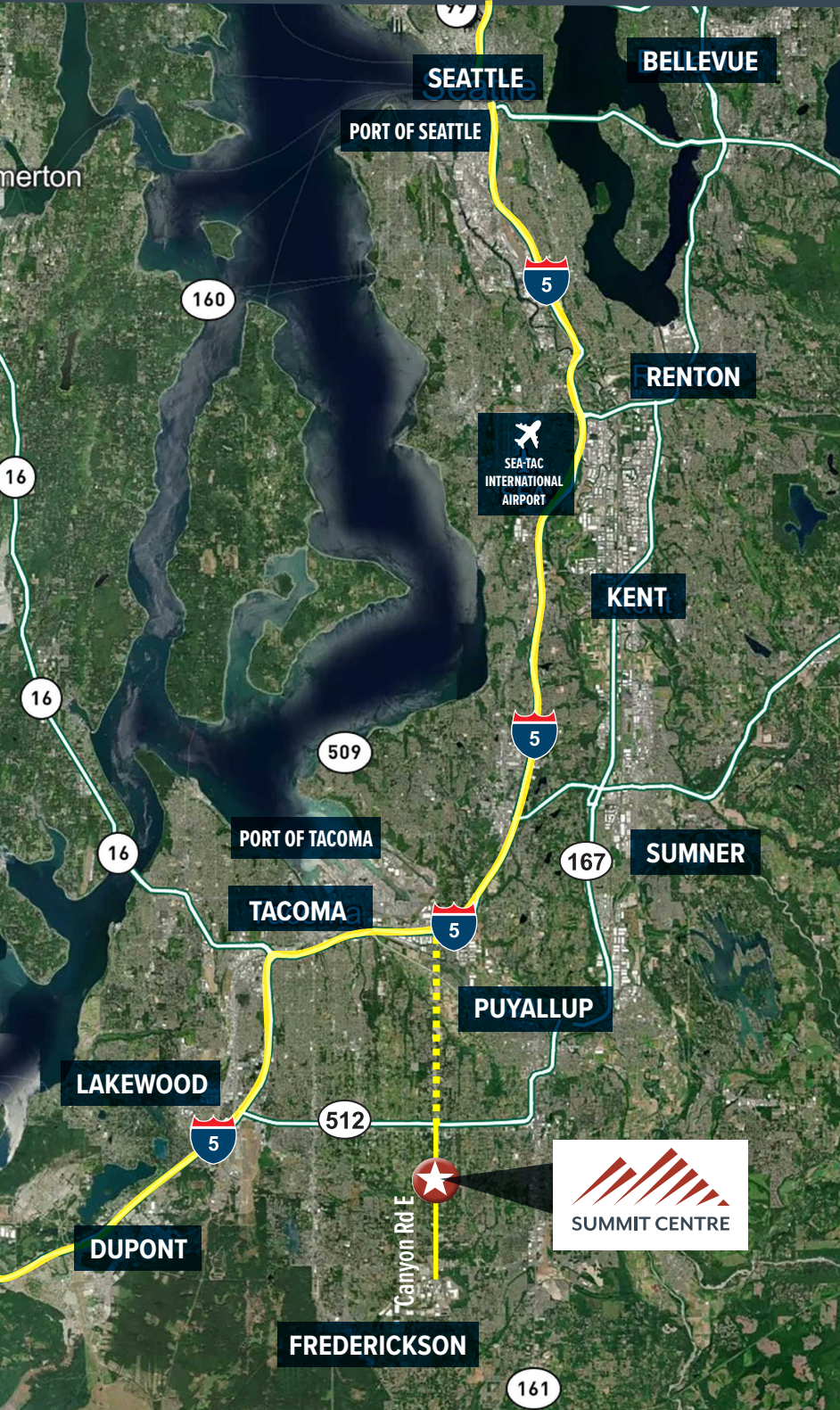


▼ DOCK-HIGH DOORS

● DRIVE-IN DOORS



# SITE LOCATION



# CORPORATE NEIGHBORS

PUYALLUP, WA



# DISTANCE TO/FROM SUMMIT CENTRE



SEATTLE  
**45 MILES**



PORT OF SEATTLE  
**44 MILES**



SEA-TAC  
INTERNATIONAL  
AIRPORT  
**37 MILES**



PORT OF TACOMA  
**17 MILES**



PORTLAND, OREGON  
**141 MILES**



BOISE, IDAHO  
**511 MILES**



# SUMMIT CENTRE

13306 Canyon Rd E. • Puyallup, WA 98373

CBRE, INC. • 710 Market Street • Tacoma, WA 98402

FOR MORE INFORMATION, CONTACT

## MONTE DECKER

Senior Vice President

+1 253 596 0041

[monte.decker@cbre.com](mailto:monte.decker@cbre.com)

## CHRIS COWLES

First Vice President

+1 253 596 0048

[chris.cowles@cbre.com](mailto:chris.cowles@cbre.com)



**CBRE**



**VECTOR**

© 2024 CBRE, Inc. All rights reserved. This information has been obtained from sources believed reliable, but has not been verified for accuracy or completeness. You should conduct a careful, independent investigation of the property and verify all information. Any reliance on this information is solely at your own risk. CBRE and the CBRE logo are service marks of CBRE, Inc. All other marks displayed on this document are the property of their respective owners. Photos herein are the property of their respective owners. Use of these images without the express written consent of the owner is prohibited. SD 11.22.24