

# 33,600 SF

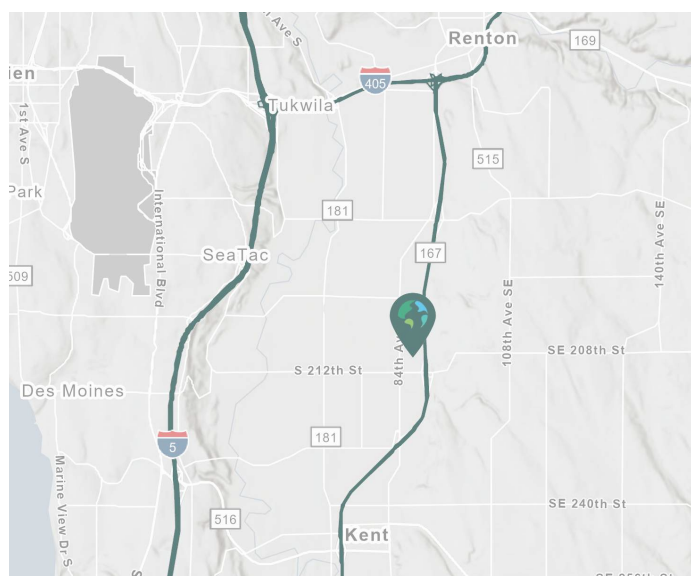
Industrial Space For Lease



## Northwest Corporate Park - Kent 17



20866 84th Ave S  
Kent, WA 98031



### LOCATION

- 50-yard line location
- Great access to Hwy 167, I-5, and I-405

### FACILITY

- 33,600 SF shell
- 2,830 SF 1st floor office
- 2,384 SF 2nd floor office
- ±12,000 SF fenced outside storage
- 14 DH doors
- 1 GL door
- 22' clear height
- 40' x 40' typical column spacing
- Available now
- Fast, cost-effective forklift and racking sourcing through Prologis Essentials

Your single-source service for efficient move-in and operations: [prologisessentials.com](https://www.prologisessentials.com)

[www.prologis.com](https://www.prologis.com)

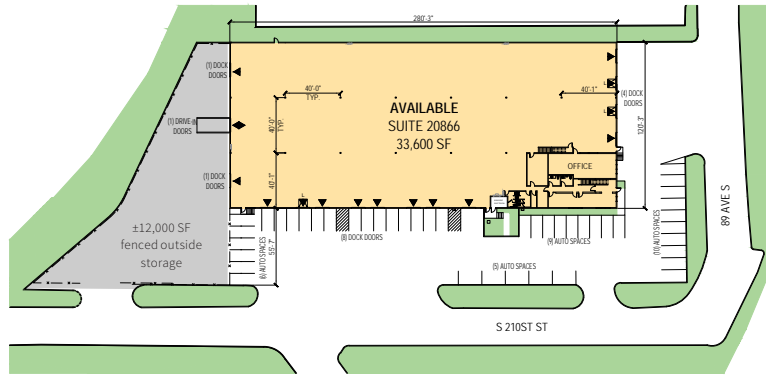
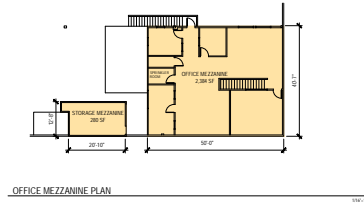
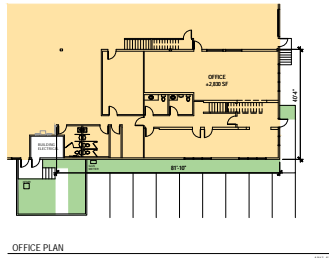
# 33,600 SF

## Industrial Space For Lease



# Northwest Corporate Park - Kent 17

NOTE: THIS CONCEPTUAL PLAN IS FOR MARKETING PURPOSES ONLY AND HAS BEEN PREPARED BASED ON PRELIMINARY AVAILABLE SITE INFORMATION DEEMED RELIABLE. ALL DIMENSION AREA CALCULATIONS ARE SUBJECT TO VERIFICATION BY A PROFESSIONAL ENGINEER FOR COMPLIANCE WITH ALL FEDERAL, STATE, AND LOCAL REGULATIONS.



<b>PROLOGIS</b>	
<b>NW CORPORATE PARK KENT 17 (sea04017)</b>	
20866 89TH AVENUE S. KENT, WA 98031	
TOTAL BUILDING FOOTPRINT:	33,600 SF
TOTAL AVAILABLE:	33,600 SF
OFFICE SPACE:	2,830 SF
2ND FLOOR OFFICE:	2,384 SF
STORAGE MEZZANINE:	280 SF
WAREHOUSE SPACE:	30,770 SF
AUTO PARKING:	30
DOCK DOORS:	14
DRIVE-INS DOORS:	1
TYPICAL SPEED BAY DEPTH:	±40'-1"
TYPICAL COLUMN SPACING:	±40'-0" X 40'-0"
<b>LEGEND:</b>	
▼ DOCK DOOR L = LEVELER	
◆ DRIVE-IN DOOR	
■ RAIL DOOR	
□ AVAILABLE AREA	
□ LEASED AREA	
■ LAND	
<b>PROLOGIS</b> 5900 AIRPORT WAY S, SUITE 300 SEATTLE, WA 98108	
<b>BURGESS DESIGN</b> DATE: SEPTEMBER 20, 2024	



**KBC Advisors**  
 Matt Wood, SIOR  
 matt.wood@kbcadvisors.com  
 ph +1 206 741 1030  
 cell +1 206 595 6814  
 5628 Airport Way S  
 Suite 238  
 Seattle, WA 98108 USA

**KBC Advisors**  
 Hans Vieser  
 hans.vieser@kbcadvisors.com  
 ph +1 206 741 1030  
 cell +1 425 765 7926  
 5628 Airport Way S  
 Suite 238  
 Seattle, WA 98108 USA

**Prologis**  
 Kimberley Nemethy  
 knemethy@prologis.com  
 ph +1 206 414 7616  
 cell +1 253 508 1737  
 5900 Airport Way South  
 Suite 300  
 Seattle, WA 98108 USA