

2201 S 19TH STREET

Medical Office Building



LISTING INFORMATION

ADDRESS:	2201 S 19th Street, Tacoma WA
AVAILABLE SF:	Suite 104: 4,486 SF (February 1, 2025) Suite 206: 227 SF
LEASE RATE:	\$22 PSF (\$11.70 PSF NNN's)
PARKING:	4+/1,000 parking

COMMENTS

The property is close to Allenmore Hospital, Tacoma General Hospital, and Saint Joseph's Hospital. Building and Suites are ADA accessible. The site is in close proximity to Highway 16 and Interstate 5.

The information provided herein is from sources we deem reliable, however it is provided without any guarantee or representation as to its accuracy. Prospective parties should independently verify all information prior to entering into any agreements.

LOCATION



LEE & ASSOCIATES
COMMERCIAL REAL ESTATE SERVICES

2201 S 19TH STREET

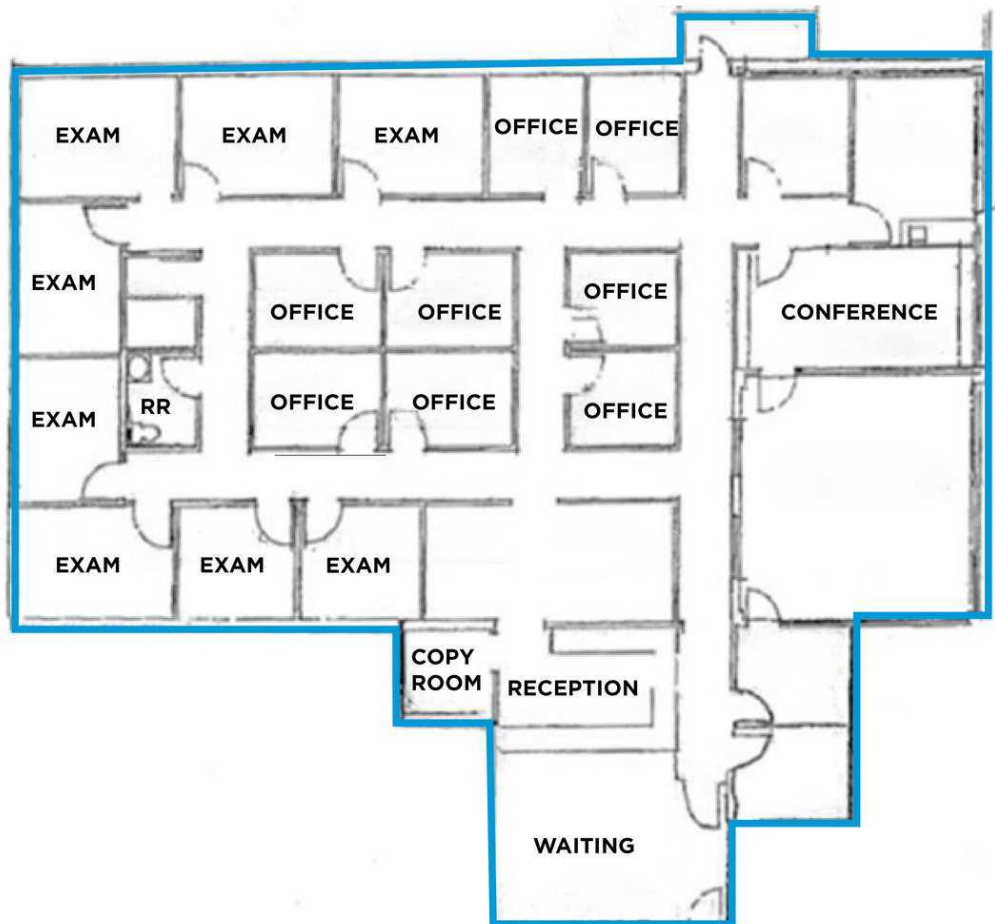
227 SF Office Building

LEE & ASSOCIATES
COMMERCIAL REAL ESTATE SERVICES

John Bauder, CCIM
jbauder@lee-associates.com
253.238.0043

Harrison Laird
hlaird@lee-associates.com
253.238.0044

SUITE 104 | 4,486 RSF - AVAILABLE 2/1/25



John Bauder, CCIM
jbauder@lee-associates.com
253.238.0043

Harrison Laird
hlaird@lee-associates.com
253.238.0044

2201

S 19TH STREET

Medical Office Building

SUITE 206 | 277 RSF

