

FOR LEASE

900 Meridian Avenue E
Milton, WA 98354



COMING SOON! 



NOW OPEN!
  



SURPRISE LAKE SQUARE

Justin Holmes | Josh Parnell | Justice Knox

First Western Properties—Tacoma Inc. | 253.472.0404
6402 Tacoma Mall Blvd, Tacoma, WA 98409 | fwp-inc.com

SURPRISE LAKE SQUARE is a strong, grocery anchored shopping center situated between I-5 and State Route 167. It is a bustling neighborhood shopping center with national anchors such as Safeway and Anytime Fitness. It offers high visibility on the best corner in Milton, along with close proximity to Federal Way, Puyallup, Fife, Kent and Auburn.

900 MERIDIAN AVENUE E AVAILABLE

- ▶ SUITE 21C: 1,691 SF \$35.00 PSF + NNN
- ▶ SUITE 25: 1,400 SF \$32.00 PSF + NNN
- ▶ SUITE 816: 5,860 SF | GROUND LEASE | CALL FOR DETAILS

- **Ample parking at 5/1,000.**
- **Established neighborhood:** Located in a well-established area of Milton with existing residential and commercial development.
- **Accessibility:** Easy access to major roadways like State Route 167, providing convenient connections to surrounding areas.
- **Surrounding amenities:** Depending on the specific unit or business type, potential proximity to various amenities like The Mill Steakhouse, grocery stores, and other businesses in the Surprise Lake Square shopping center.



Population

Regis - 2024



Average HH Income



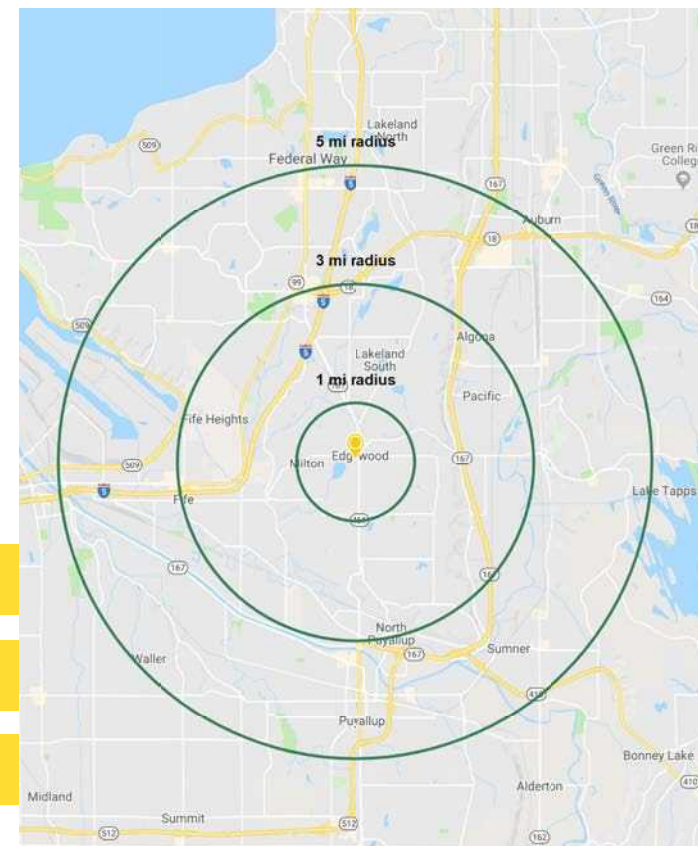
Daytime Population

	Population	Average HH Income	Daytime Population
Mile 1	11,188	\$112,320	4,687
Mile 3	55,615	\$127,691	35,547
Mile 5	189,677	\$126,482	128,324

TENANTS



COMING SOON!



LOCATION DETAILS



30,845 CPD
Meridian Ave E



13,994 CPD
Milton Way



Located in a
busy neighborhood
shopping center



Located between
I-5 and SR-167

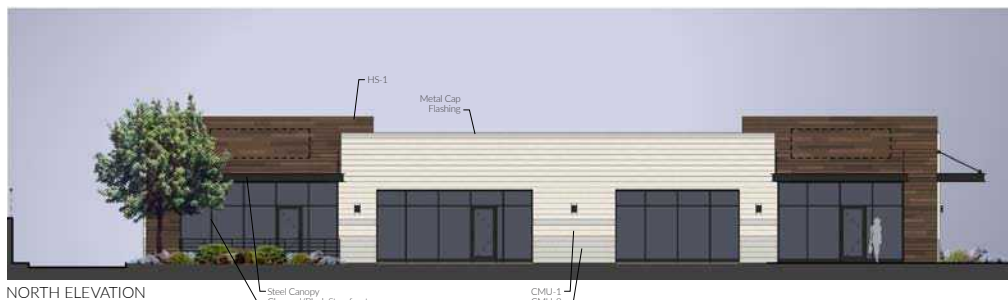


SITE PLAN



EAST ELEVATION

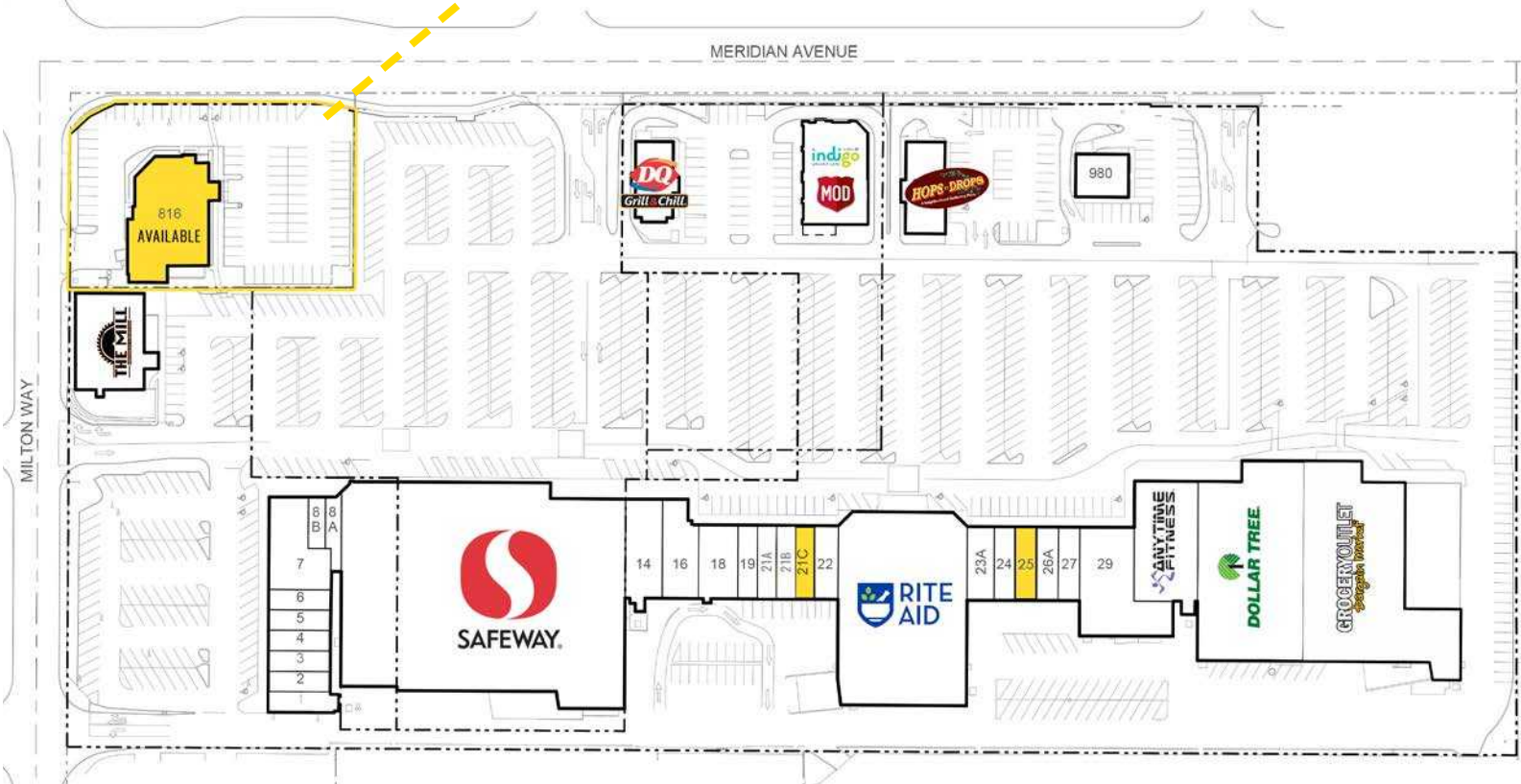
Metal Cap Flashing
 CMU-2
 CMU-1
 HS-1
 Stone Light Fixture (Typ.)
 Charcoal/Black Storefront



NORTH ELEVATION

Steel Canopy
 Charcoal/Black Storefront
 HS-1
 Metal Cap Flashing
 CMU-1
 CMU-2

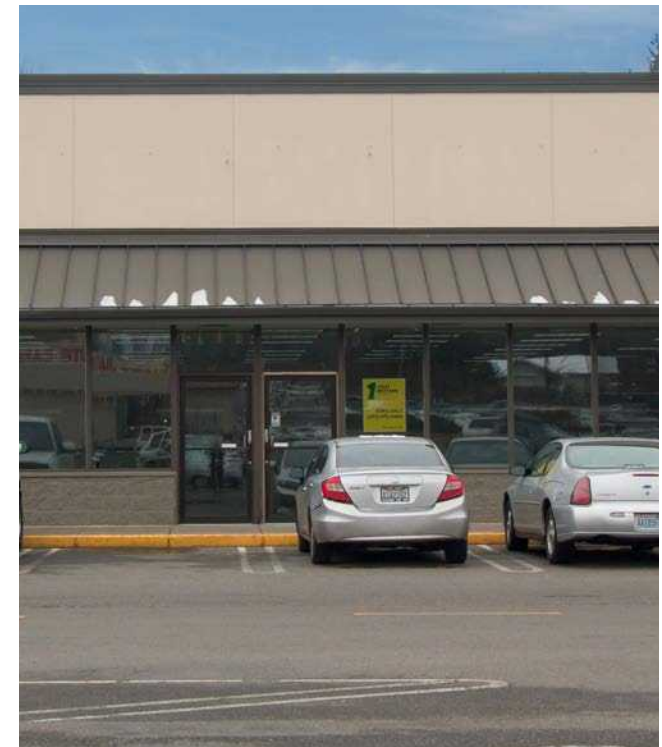
FUTURE DEVELOPMENT RENDERINGS



Suite	SF	Rate	Details
21C	1,691	\$35.00 + NNN	AVAILABLE
25	1,400	\$32.00 + NNN	AVAILABLE
816	5,860	CALL FOR DETAILS	AVAILABLE



SUMMARY



TACOMA | KIRKLAND | PORTLAND | SEATTLE


RELATIONSHIP FOCUSED.
RESULTS DRIVEN.

JUSTIN HOLMES

 253.447.2282


 justin@firstwesternproperties.com

JOSH PARNELL

 253.284.3630

 josh@firstwesternproperties.com

JUSTICE KNOX

 253.471.5501

 jknox@firstwesternproperties.com

First Western Properties—Tacoma Inc. | 253.472.0404
6402 Tacoma Mall Blvd, Tacoma, WA 98409 | fwp-inc.com

© First Western Properties, Inc. DISCLAIMER: The above information has been secured from sources believed to be reliable, however, no representations are made to its accuracy. Prospective tenants or buyers should consult their professional advisors and conduct their own independent investigation. Properties are subject to change in price and/or availability without notice.

