

# 7014 SOUTH 220TH STREET

KENT, WA 98032

FOR SUBLEASE - 3,750 SF

## RARE SMALL DOCK HIGH SPACE AVAILABLE IN KENT



### LEASE INFORMATION

Available Size	Office Size	Warehouse Size	Loading	Lease Rate	Lease Type
3,750 SF	369 SF	3,381 SF	2 GL & 3 DH Doors	\$1.22/SF Blended	NNN

### LEASE INFORMATION

- Lease term through June 1, 2027
- Located in the heart of the Kent Industrial Market
- High image building and landscaping
- Immediate access to Hwy 167 and I-5



**JOHN BLEDSOE**

206.787.1460

[jbledsoe@neilwalter.com](mailto:jbledsoe@neilwalter.com)

**KERMIT JORGENSEN**

206.787.1475

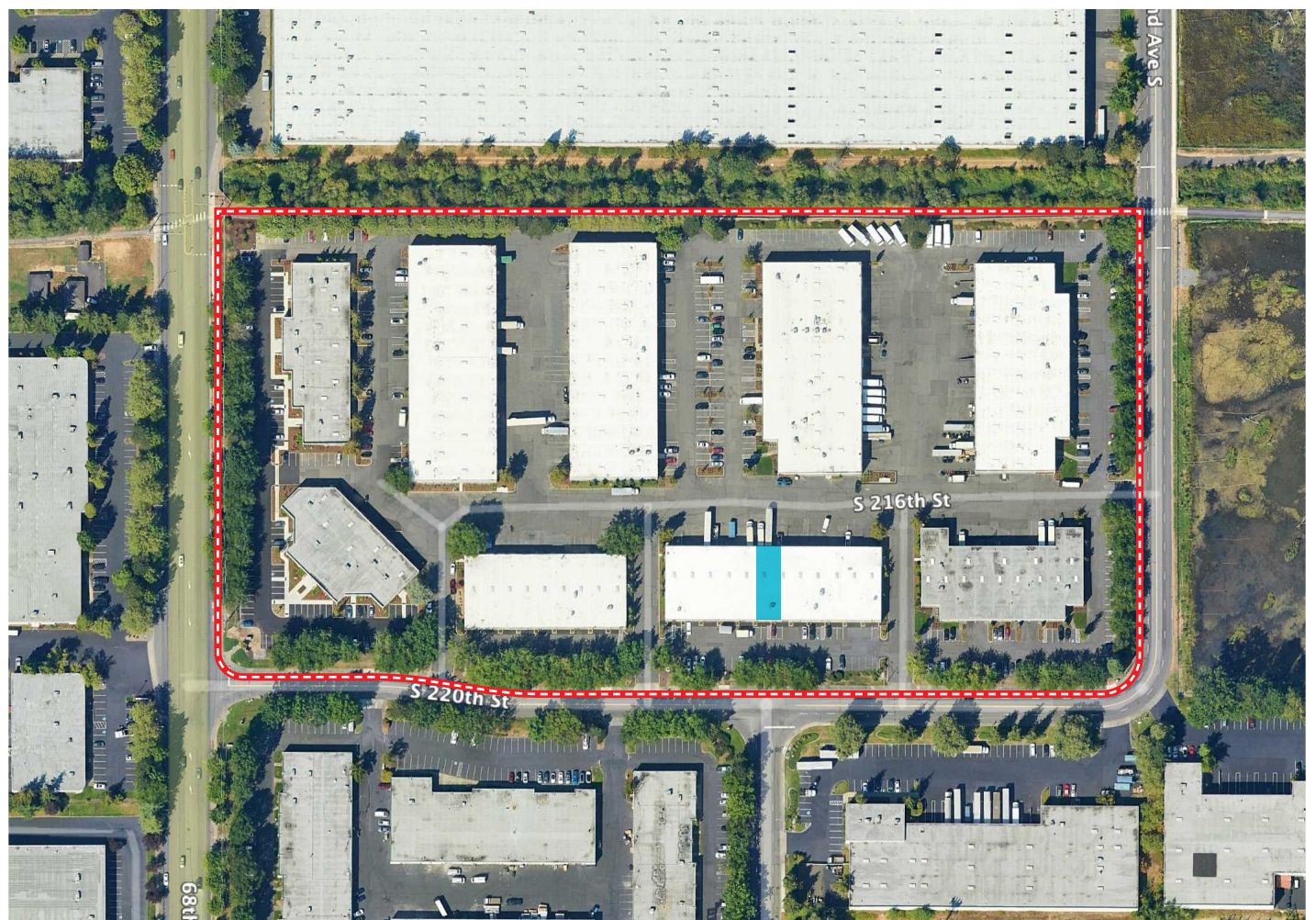
[kjorgensen@neilwalter.com](mailto:kjorgensen@neilwalter.com)

All information references in this document are approximate. The information contained herein is contained from sources deemed reliable. It is provided without representation, warranty, or guarantee, expressed or implied as to accuracy. Prospective buyer or tenant should conduct its own independent investigation relating to the property, government codes and regulations, allowed uses, and all other matters, regardless of whether they are referred to or contained in this document.



# 7014 SOUTH 220TH STREET

KENT, WA 98032



**JOHN BLEDSOE**  
206.787.1460  
jbledsoe@neilwalter.com

**KERMIT JORGENSEN**  
206.787.1460  
kjorgensen@neilwalter.com

550 S Michigan St  
Seattle, WA 98108  
206.787.1800  
www.neilwalter.com

All information references in this document are approximate. The information contained herein is contained from sources deemed reliable. It is provided without representation, warranty, or guarantee, expressed or implied as to accuracy. Prospective buyer or tenant should conduct its own independent investigation relating to the property, government codes and regulations, allowed uses, and all other matters, regardless of whether they are referred to or contained in this document.