

FOR SUBLEASE

BLACKRIVER CORPORATE PARK

1100 OAKESDALE AVE SW | RENTON, WA

19,796 RSF office/lab space

±12,480 SF office / ±7,316 SF lab

Prominent location

Great access to I-5 and I-405

Long-term lease in place, expires 4/30/2030

Quality office/lab

1 grade-level door to access warehouse/lab

Abundant parking with 85 stalls

Numerous amenities including fitness center and conference rooms

Please call for rates

19,796

SF AVAILABLE

85

PARKING STALLS

ONE

GL DOOR

MIKE NEWTON
206.248.7311
mike.newton@kidder.com

SPENCER CLAPP
206.248.7427
spencer.clapp@kidder.com

KIDDER.COM

This information supplied herein is from sources we deem reliable. It is provided without any representation, warranty, or guarantee, expressed or implied as to its accuracy. Prospective Buyer or Tenant should conduct an independent investigation and verification of all matters deemed to be material, including, but not limited to, statements of income and expenses. Consult your attorney, accountant, or other professional advisor.

**km Kidder
Mathews**

19,796 SF

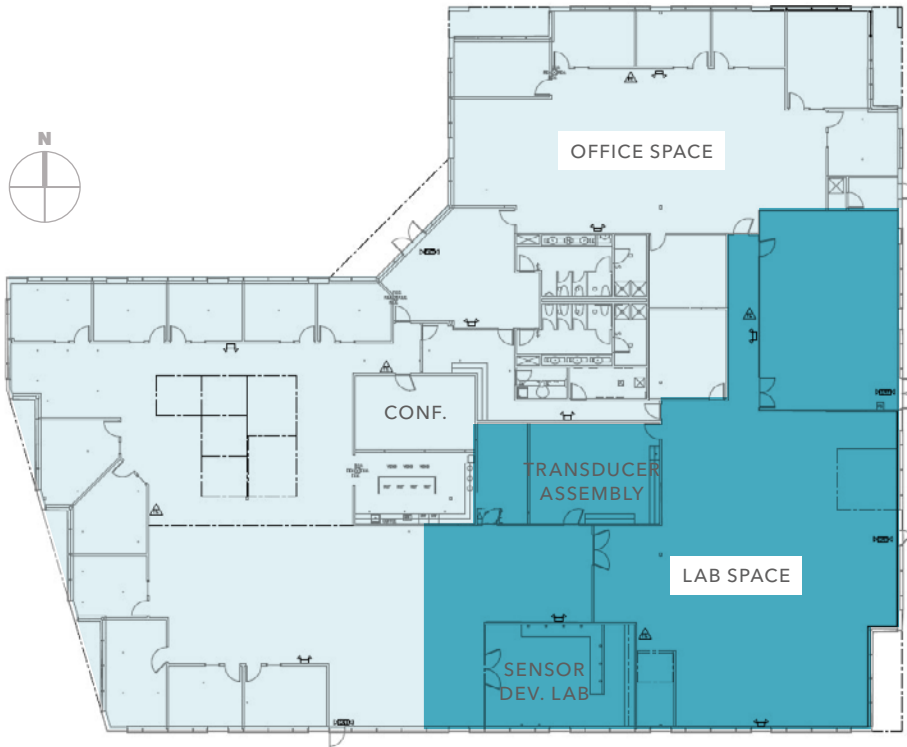
AVAILABLE

85

PARKING STALLS

ONE

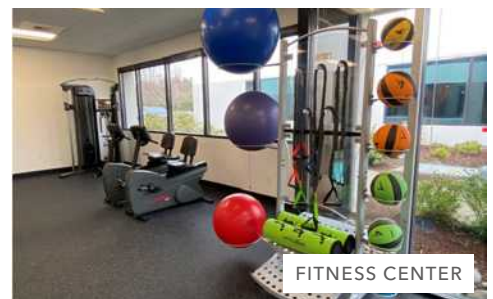
GL DOOR



CONFERENCE ROOM



OUTDOOR GATHERING AREA



FITNESS CENTER

KIDDER.COM

This information supplied herein is from sources we deem reliable. It is provided without any representation, warranty, or guarantee, expressed or implied as to its accuracy. Prospective Buyer or Tenant should conduct an independent investigation and verification of all matters deemed to be material, including, but not limited to, statements of income and expenses. Consult your attorney, accountant, or other professional advisor.







MIKE NEWTON 206.248.7311 | mike.newton@kidder.com
SPENCER CLAPP 206.248.7427 | spencer.clapp@kidder.com

KIDDER.COM

This information supplied herein is from sources we deem reliable. It is provided without any representation, warranty, or guarantee, expressed or implied as to its accuracy. Prospective Buyer or Tenant should conduct an independent investigation and verification of all matters deemed to be material, including, but not limited to, statements of income and expenses. Consult your attorney, accountant, or other professional advisor.