

Office | For Lease

CBRE

Kenmore Lake Building

New Reduced Rates

6161 NE 175th Street
Kenmore, WA 98028



Kenmore Lake Building

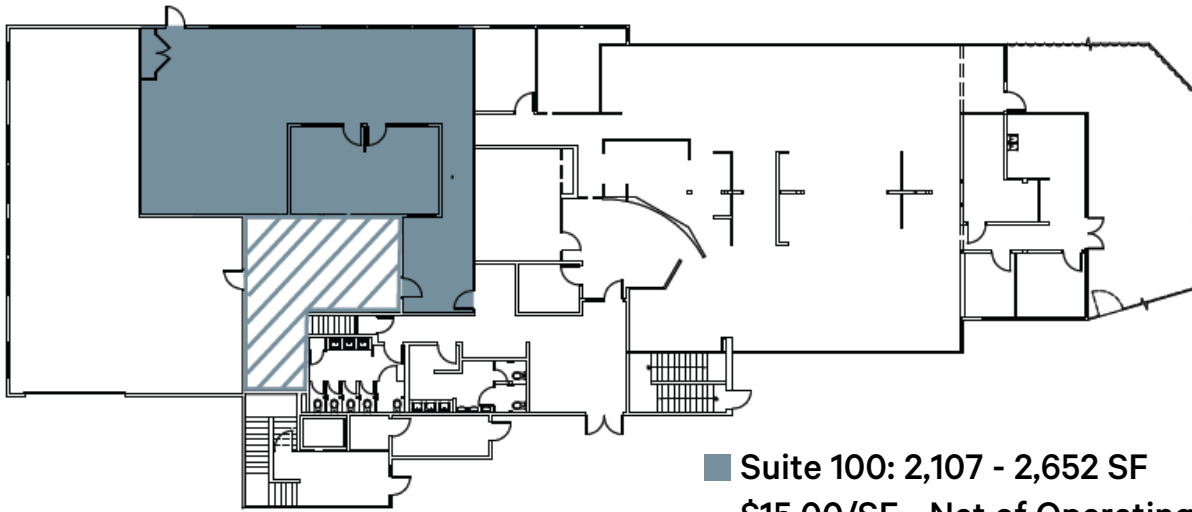
6161 NE 175th Street | Kenmore, WA 98028



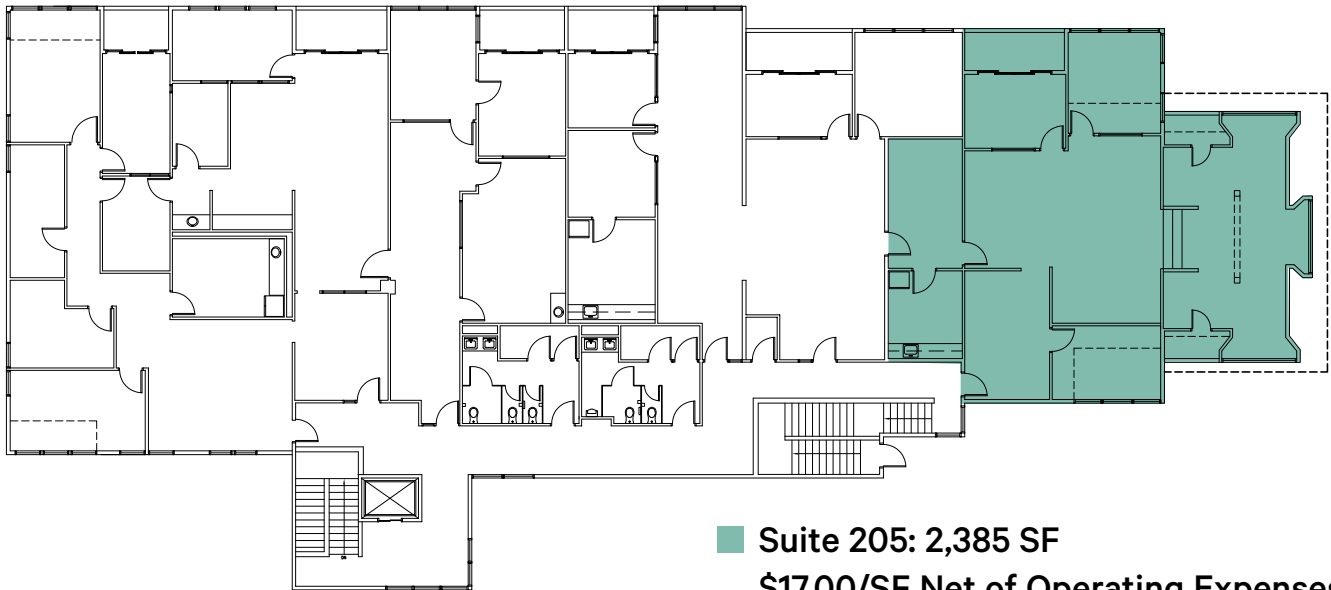
Property Features

- Rare office availability with Lake Washington views
- 3 miles from I-405 and I-5
- New building common area upgrades
- Ample surface parking
- Walking distance to the Burke Gilman Trail, restaurants, retail and financial institutions
- Reduced Rate for Suite 100

Availabilities



■ Suite 100: 2,107 - 2,652 SF
\$15.00/SF - Net of Operating Expenses



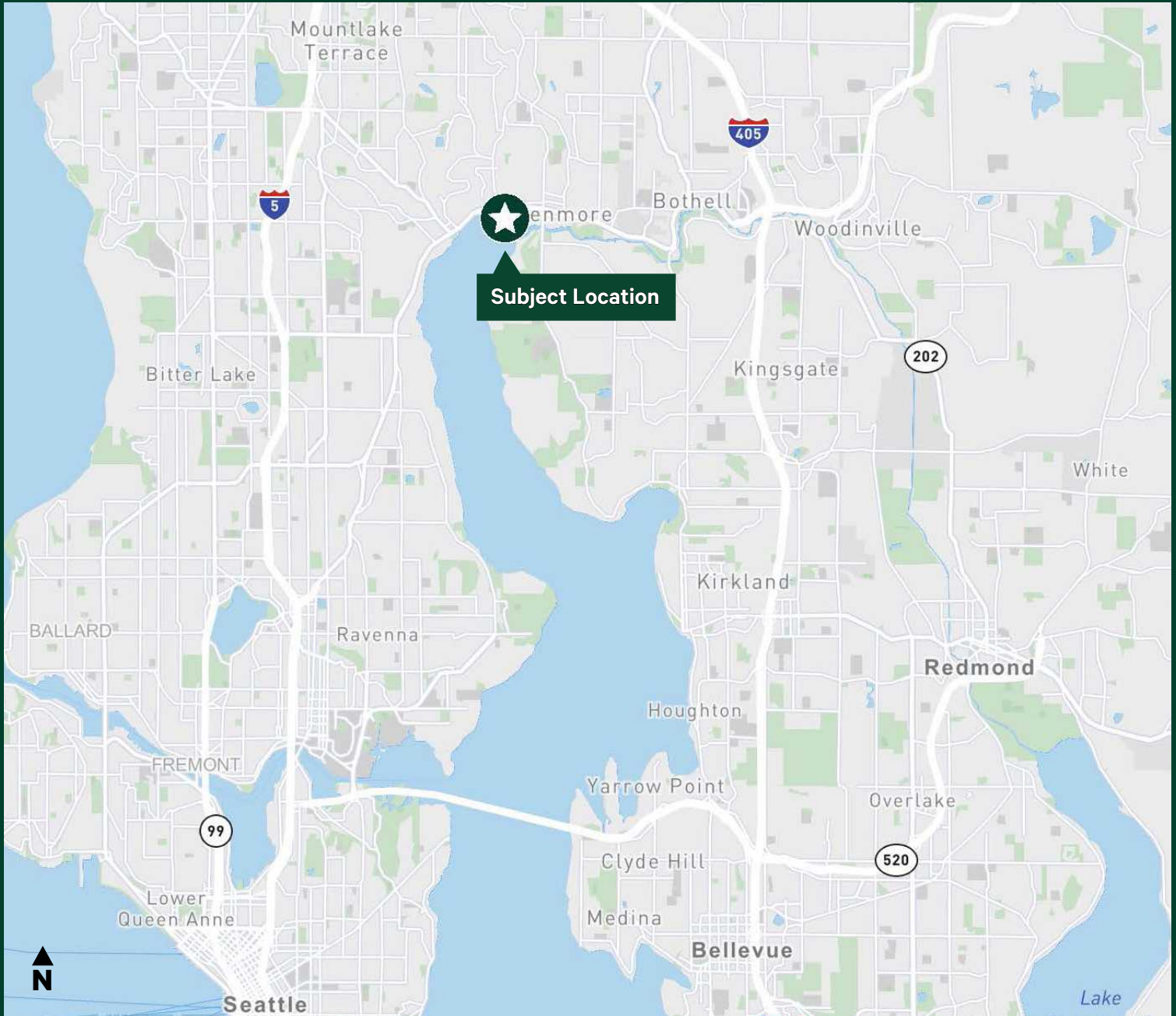
■ Suite 205: 2,385 SF
\$17.00/SF Net of Operating Expenses

Suite Number	Size	Availability
100	2,107- 2,652 SF	Now
205	2,385 SF	Now

Kenmore Lake Building

6161 NE 175th Street | Kenmore, WA 98028

For Lease



Contact Us

Ric Brandt

Senior Vice President
+1 425 462 6901
ric.brandt@cbre.com

John Bauer

Senior Vice President
+1 425 461 6906
john.bauer@cbre.com

Erik Larson

Senior Vice President
+1 425 462 6954
erik.larson@cbre.com

© 2024 CBRE, Inc. All rights reserved. This information has been obtained from sources believed reliable, but has not been verified for accuracy or completeness. You should conduct a careful, independent investigation of the property and verify all information. Any reliance on this information is solely at your own risk. CBRE and the CBRE logo are service marks of CBRE, Inc. All other marks displayed on this document are the property of their respective owners, and the use of such logos does not imply any affiliation with or endorsement of CBRE. Photos herein are the property of their respective owners. Use of these images without the express written consent of the owner is prohibited. 9-25-24 RP