

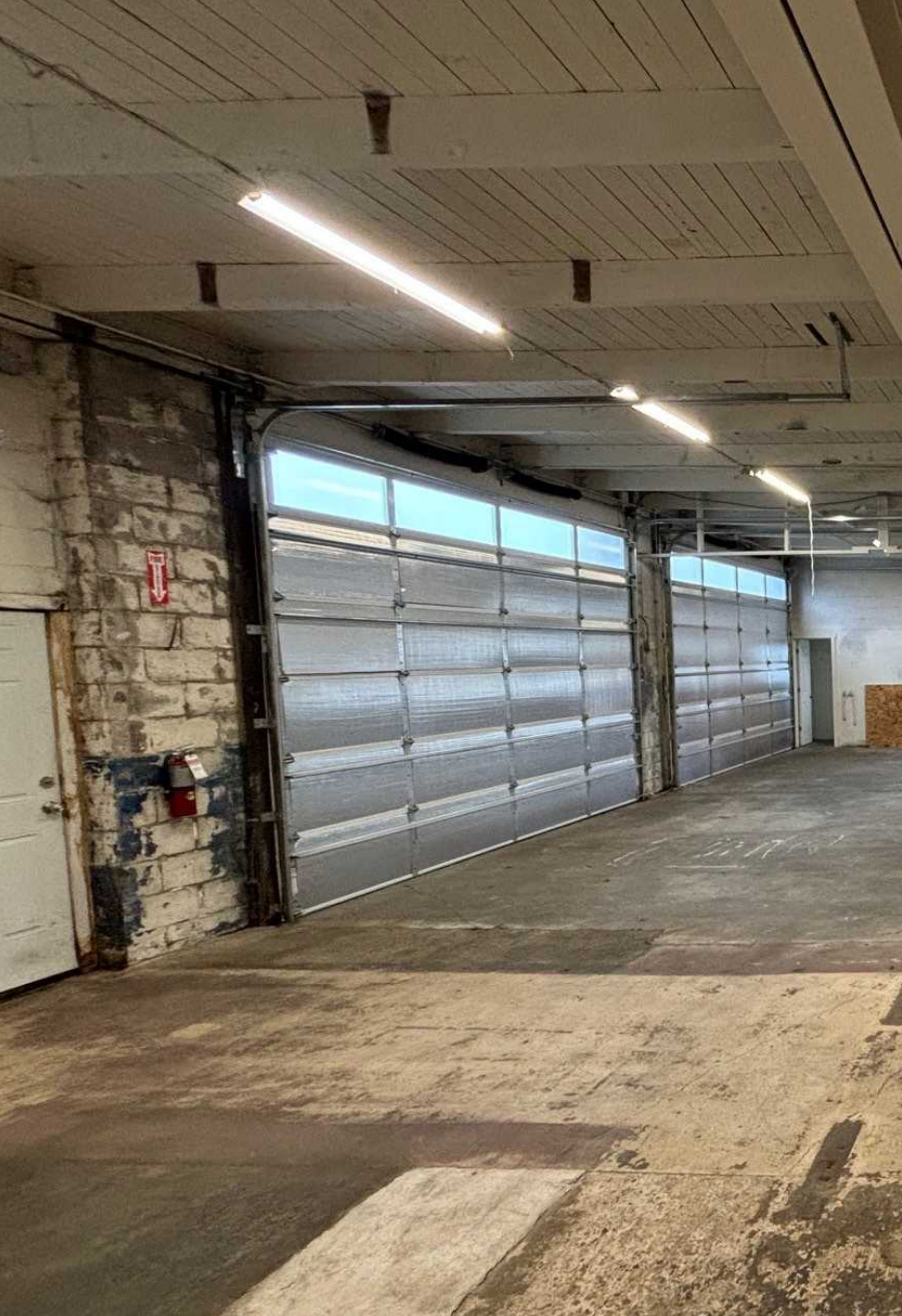
FOR LEASE

10031-  
10039

16th Ave SW  
Seattle, WA 98146

**NAI** Puget Sound  
Properties





# HIGHLIGHTS

UNIT	SIZE	TYPE	CEILING HEIGHT	LOADING
10031	4,300 SF	Industrial	12'	1 Roll-up door in rear
10035	1,500 SF	Industrial/Retail	12'	1 Roll-up door in rear
10039	4,316 SF	Industrial/Auto Shop	12'	Drive-in access off 16th Ave SW

## ADDITIONAL FEATURES



- Available together or divisible to individual unit/suite size
- Primary Arterial exposure along 16th Ave SW
- Flexible Terms

## ZONING



CBSO – Community Business Zone Special District Overlay – under the King County Land Use Zoning Code. Appropriate uses of the site would be for small scale industrial/office, retail, professional, governmental, and personal services businesses that serve the nearby residential neighborhoods



## LEASE RATE

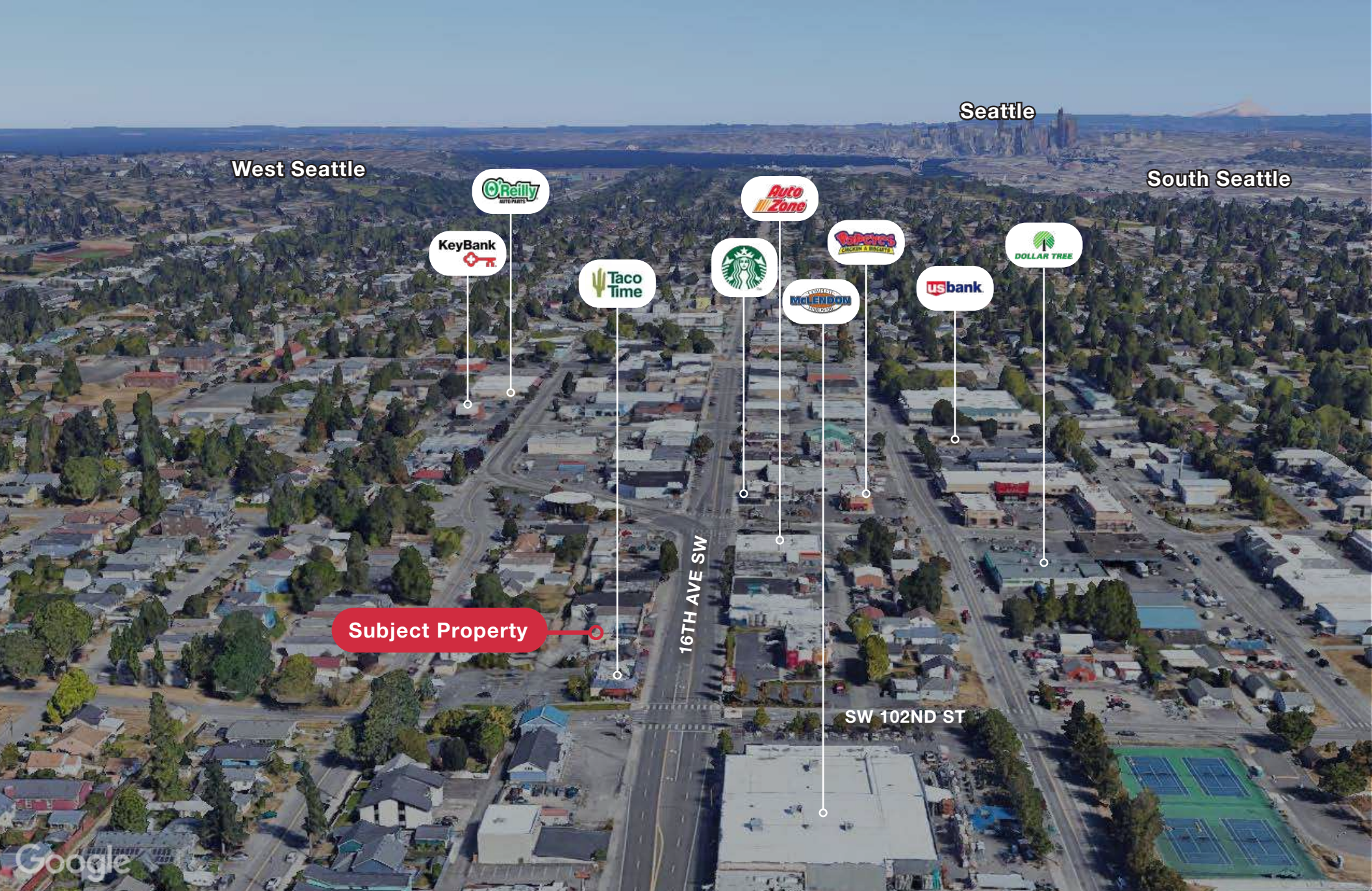
\$1.00/SF/Mo., NNN

For more information, contact:

**JOHN VERNON**  
+1 425 586 5638  
jvernon@nai-psp.com

**MATTHEW HOPKINS**  
+1 425 586 5635  
mhopkins@nai-psp.com





West Seattle

Seattle

South Seattle

KeyBank

Reilly  
AUTO PARTS

Taco Time

Starbucks

Auto Zone

McLendon  
LANDSCAPE

Repairs  
CARS & TRUCKS

usbank

DOLLAR TREE

Subject Property

16TH AVE SW

SW 102ND ST

Google

**NAI** Puget Sound Properties

THE INFORMATION CONTAINED HEREIN HAS BEEN GIVEN TO US BY THE OWNER OF THE PROPERTY OR OTHER SOURCES WE DEEM RELIABLE. WE HAVE NO REASON TO DOUBT ITS ACCURACY, BUT WE DO NOT GUARANTEE IT. ALL INFORMATION SHOULD BE VERIFIED PRIOR TO PURCHASE OR LEASE. THIS BROKERS PRICE OPINION IS NOT AN APPRAISAL AS DEFINED IN CHAPTER 18.140 RCW AND HAS BEEN PREPARED BY A REAL ESTATE LICENSEE, LICENSED UNDER CHAPTER 18.85 RCW WHO IS NOT ALSO STATE CERTIFIED OR STATE LICENSED AS A REAL ESTATE APPRAISER UNDER 18.140 RCW G:\SHARED DRIVES\ADMIN TEAM\MARKETING\FLYERS\SEATTLE\10031-10039 16TH AVE SW\10031-10039 16TH AVE SW LEASE FLYER