



# CANYON EAST LOGISTICS

17433 63RD AVENUE EAST, PUYALLUP, WA

# FOR SALE OR LEASE

**THAD MALLORY, SIOR**  
425.362.1410  
thad.mallory@nmrk.com

**TAYLOR HOFF, SIOR**  
425.362.1388  
taylor.hoff@nmrk.com

**CAM WARREN**  
425.362.1395  
cam.warren@nmrk.com

**MORGAN RICHEY, SIOR**  
425.362.1409  
morgan.richey@nmrk.com



**TOTAL 229,493 SF / 2.40 ACRE YARD**



[canyoneastpark.com](http://canyoneastpark.com)

# SITE PLAN

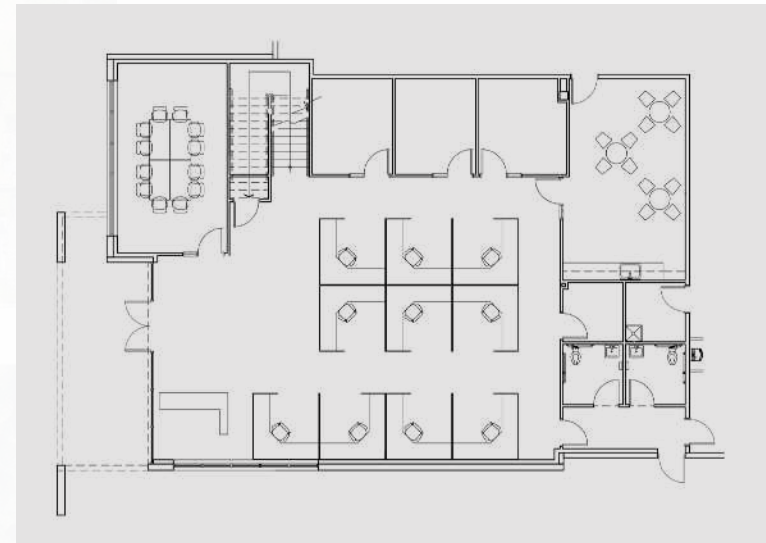


## COLUMBIA BUILDING

- Lease rates: \$0.86/SF Shell, \$1.55/SF Office add-on, \$0.18/SF Yard, NNN
- Please call brokers to discuss sale terms
- 229,493 Square Feet
- 3,487 Square Feet Office
- 50 Dock High Doors, 2 Grade Level Doors
- 36' Clear Height
- 7" Reinforced Slab
- Warehouse Restrooms
- LED Warehouse Lighting - 20 FC
- 150+ Auto Parking Stalls
- 76 Trailer Parking Stalls (2.40 AC Yard)

## OFFICE FLOOR PLAN

3,487 SF OFFICE | 2,999 SF MEZZANINE



# SITE PLAN



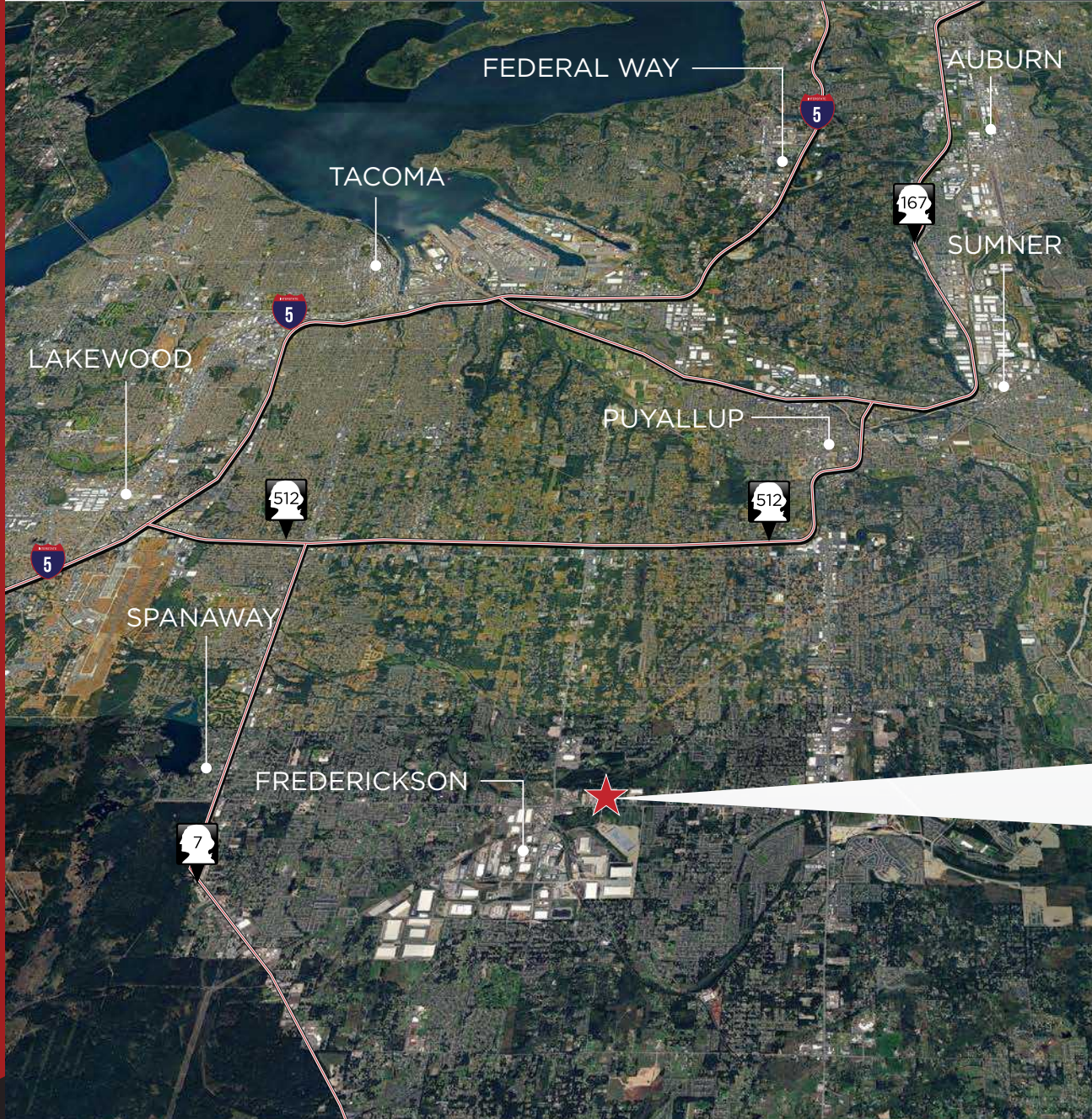
**AVAILABLE**  
2.40AC

**CHELAN  
BUILDING**  
(LEASED)

**COLUMBIA  
BUILDING**

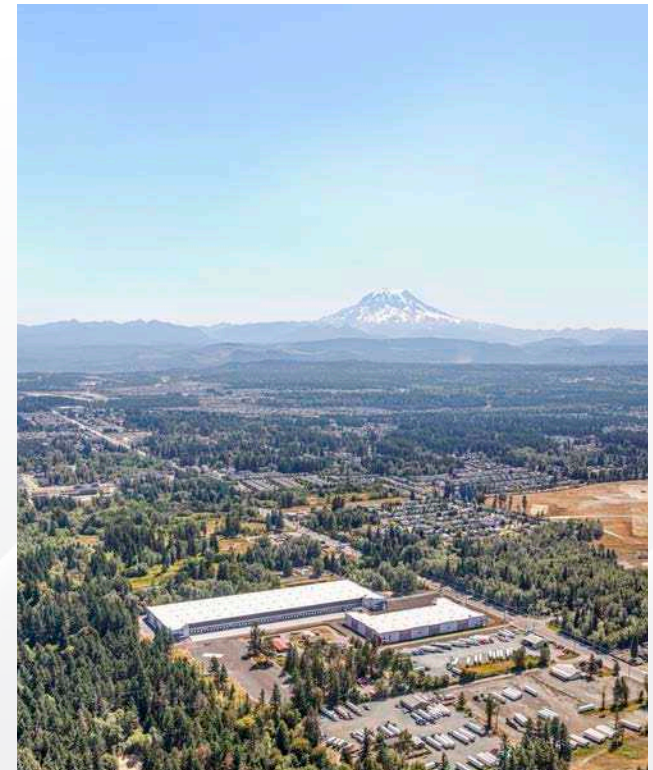
**AVAILABLE**  
229,493 SF

# DRIVETIME MAP



## APPROXIMATE DRIVE TIMES

SUMNER IND. DISTRICT	15 MINUTES
TACOMA	20 MINUTES
OLYMPIA	40 MINUTES
SEATAC INT'L AIRPORT	40 MINUTES
SEATTLE	60 MINUTES



# NEIGHBORING TENANTS



The distributor of this communication is performing acts for which a real estate license is required. The information contained herein has been obtained from sources deemed reliable but has not been verified and no guarantee, warranty or representation, either express or implied, is made with respect to such information. Terms of sale or lease and availability are subject to change or withdrawal without notice. MP-1609 11/24