

FOR LEASE

NICKERSON BUSINESS PARK

101 NICKERSON ST, SEATTLE, WA



SUITE 330

Office space

2,135 SF

Open area and private offices

Fully remodeled

New kitchen

Former healthcare office space



**NEAR SEATTLE
PACIFIC UNIVERSITY**



**SIGNAGE
POSSIBLE**



FREE PARKING



**EXCELLENT HWY
99 N/S ACCESS**

KEN HIRATA

206.296.9625

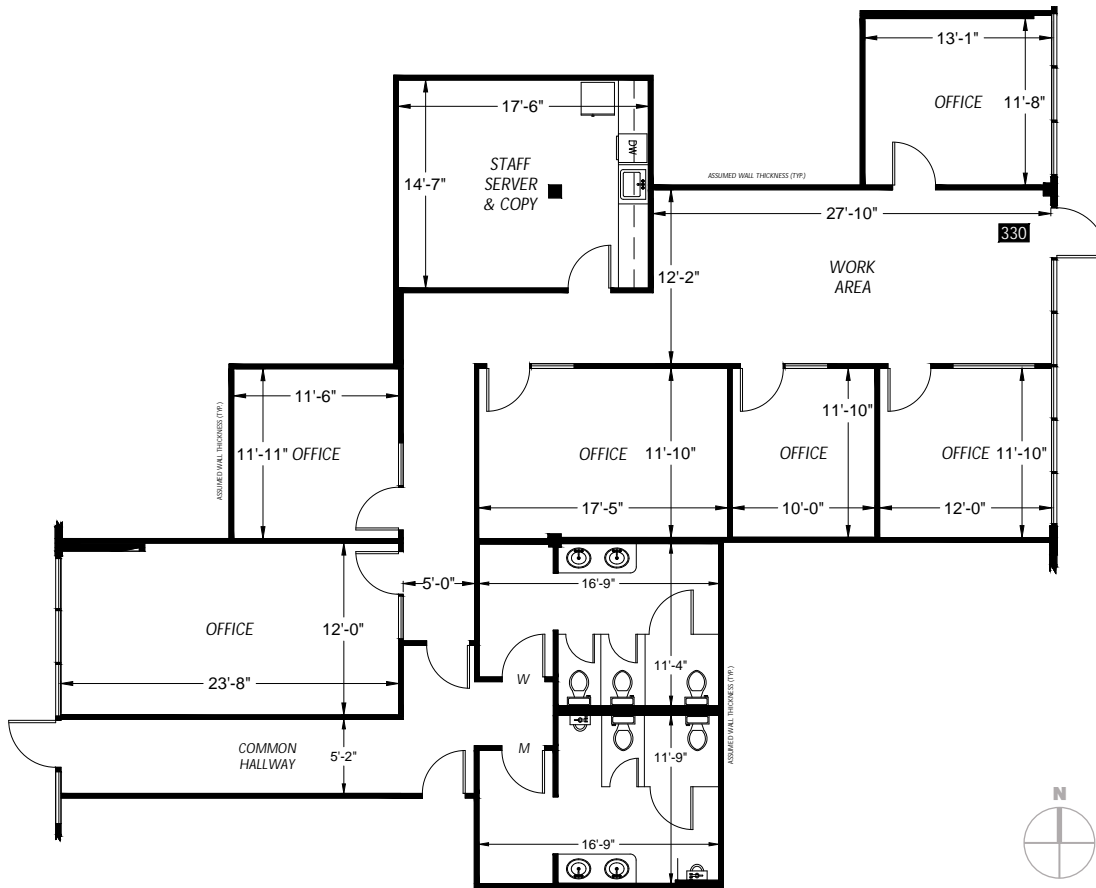
ken.hirata@kidder.com

KIDDER.COM

This information supplied herein is from sources we deem reliable. It is provided without any representation, warranty, or guarantee, expressed or implied as to its accuracy. Prospective Buyer or Tenant should conduct an independent investigation and verification of all matters deemed to be material, including, but not limited to, statements of income and expenses. Consult your attorney, accountant, or other professional advisor.

**km Kidder
Mathews**

SUITE 330



2,135 SF

AVAILABLE

\$32.00

LEASE RATE (SF/YR)
FULLY SERVICED

NOW

AVAILABLE



KEN HIRATA
206.296.9625
ken.hirata@kidder.com

KIDDER.COM

This information supplied herein is from sources we deem reliable. It is provided without any representation, warranty, or guarantee, expressed or implied as to its accuracy. Prospective Buyer or Tenant should conduct an independent investigation and verification of all matters deemed to be material, including, but not limited to, statements of income and expenses. Consult your attorney, accountant, or other professional advisor.



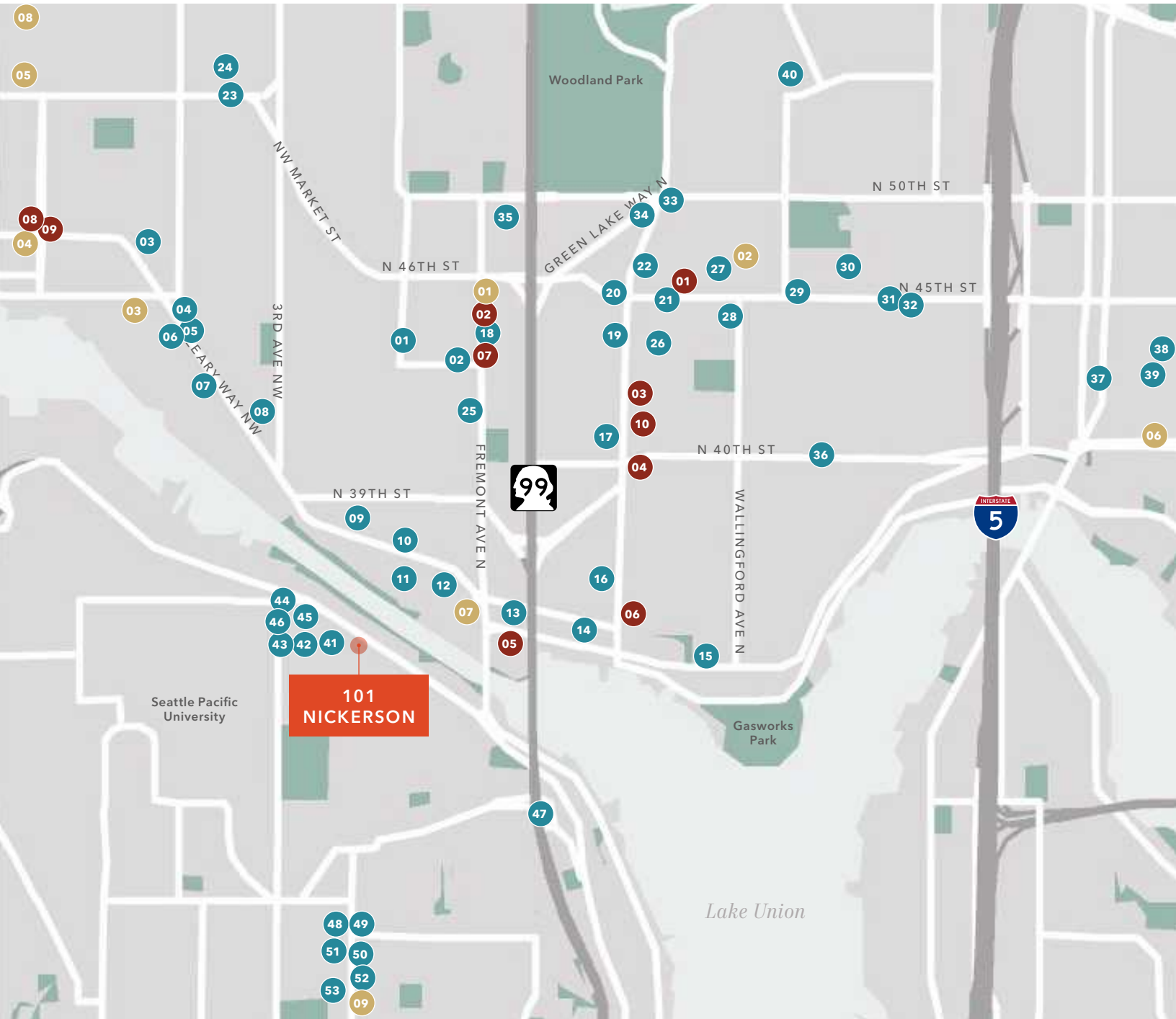
SUITE 330 PHOTOS



KIDDER.COM

This information supplied herein is from sources we deem reliable. It is provided without any representation, warranty, or guarantee, expressed or implied as to its accuracy. Prospective Buyer or Tenant should conduct an independent investigation and verification of all matters deemed to be material, including, but not limited to, statements of income and expenses. Consult your attorney, accountant, or other professional advisor.

AMENITIES MAP



KEN HIRATA
206.296.9625
ken.hirata@kidder.com

KIDDER.COM

This information supplied herein is from sources we deem reliable. It is provided without any representation, warranty, or guarantee, expressed or implied as to its accuracy. Prospective Buyer or Tenant should conduct an independent investigation and verification of all matters deemed to be material, including, but not limited to, statements of income and expenses. Consult your attorney, accountant, or other professional advisor.



NICKERSON BUILDING

EAT + DRINK

- 01 Lighthouse Roasters
- 02 Paseo Fremont
- 03 Giddy Up Burgers
- 04 Bad Jimmy's Berwing Co
- 05 4Bs - Ballard Grill & Alehouse
- 06 Hale's Brewery
- 07 Two Shoe BBQ
- 08 Frelard Pizza Company
- 09 The George & Dragon Pub
- 10 Nectar Lounge
- 11 Brouwer's Cafe
- 12 Fremont Coffee Company
- 13 Milstead & Co
- 14 Fremont Brewing Company
- 15 The Essential Baking Company
- 16 Monolin
- 17 Pagliacci Pizza
- 18 Uneeda Burger
- 19 Tutta Bella Neapolitan Pizzeria
- 20 Seattle Meowtropolitan
- 21 Tilth
- 22 Blue Star Cafe & Pub
- 23 Slate Coffee Bar
- 24 Veraci Pizza
- 25 Le Coin
- 26 Rocking Wok Taiwanese Cuisine

- 27 Molly Moon's Homemade Ice Cream
- 28 Julia's in Wallingford
- 29 The Octopus Bar
- 30 Ezell's Famous Chicken
- 31 Dick's Drive-In
- 32 Rancho Bravo Tacos
- 33 Bamboo Village
- 34 Kidd Valley
- 35 El Legendario Mexican
- 36 Irwin's Neighborhood Bakery
- 37 Portage Bay Cafe
- 38 Chipotle Mexican Grill
- 39 Starbucks
- 40 Mighty-O Donuts
- 41 206 Burger Company
- 42 Zeeks Pizza
- 43 Two Kicks coffee
- 44 Byen Bakaery
- 45 Thai Fusion Restaurant
- 46 7-Eleven
- 47 Canlis
- 48 Homegrown
- 49 Grappa
- 50 Bounty Kitchen
- 51 How to Cook a Wolf
- 52 El Mezcalito
- 53 Elliott Bay Pizza

GROCERY + SHOPPING

- 01 Marketime Foods
- 02 QFC
- 03 Fred Meyer
- 04 Trader Joe's
- 05 Safeway
- 06 District Market
- 07 PCC Community Markets
- 08 Ballard Market
- 09 Trader Joes

HEALTH + SERVICES

- 01 Neighborcare Health
- 02 Fremont Family Practice
- 03 Community Psychiatric Clinic
- 04 Emerald City Athletics
- 05 Anytime Ftiness
- 06 FUELhouse
- 07 The Yoga Tree
- 08 CorePower Yoga
- 09 Meridian Women's Health
- 10 Emerald City Emergency Clinic

KEN HIRATA

206.296.9625

ken.hirata@kidder.com

KIDDER.COM

This information supplied herein is from sources we deem reliable. It is provided without any representation, warranty, or guarantee, expressed or implied as to its accuracy. Prospective Buyer or Tenant should conduct an independent investigation and verification of all matters deemed to be material, including, but not limited to, statements of income and expenses. Consult your attorney, accountant, or other professional advisor.

