

231 Summit Ave E

231 SUMMIT AVE E STE C,
SEATTLE, WA, 98102

James Eeckhoudt
206-315-1829
jamese@206pm.com





231 Summit Ave E

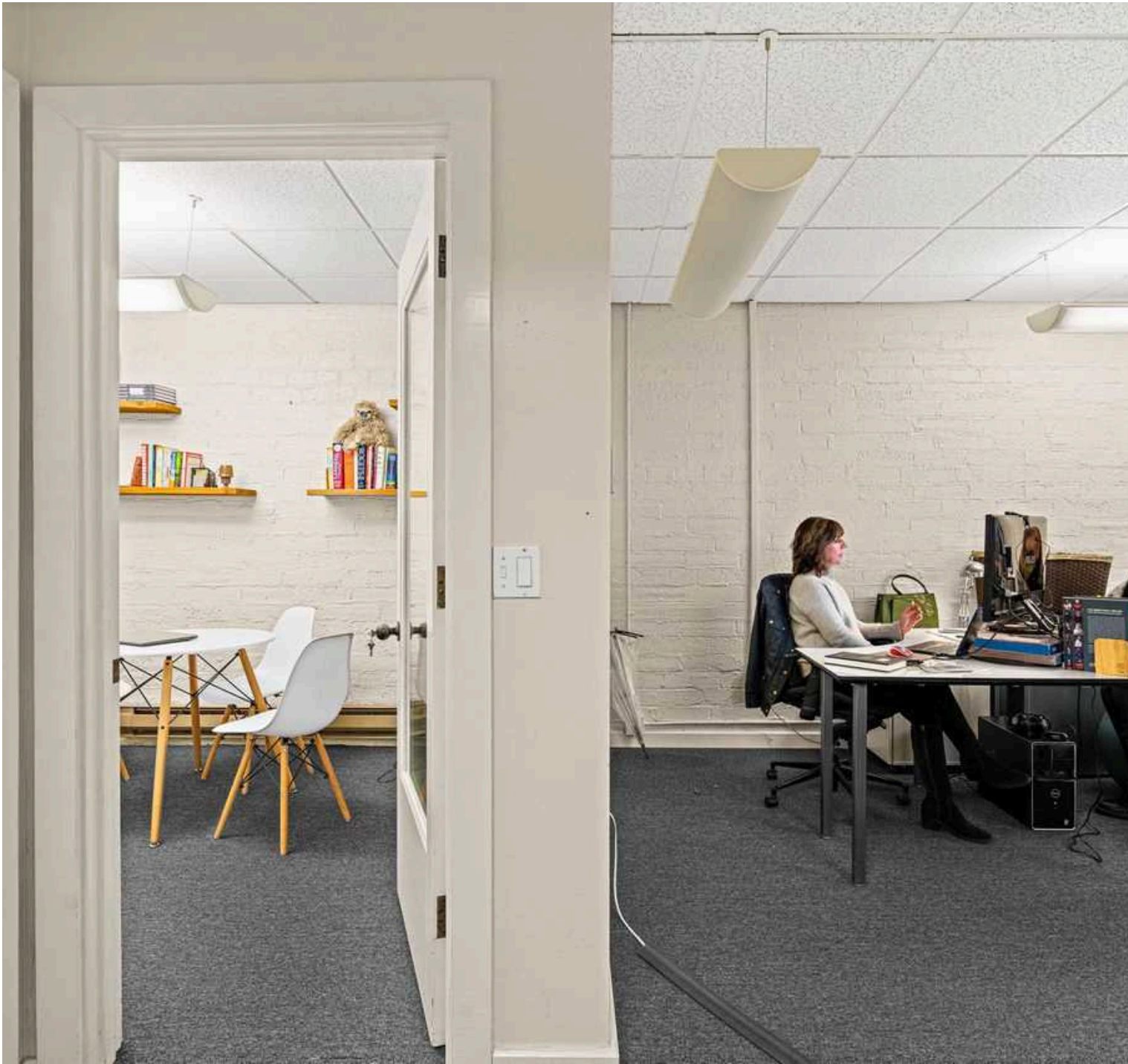
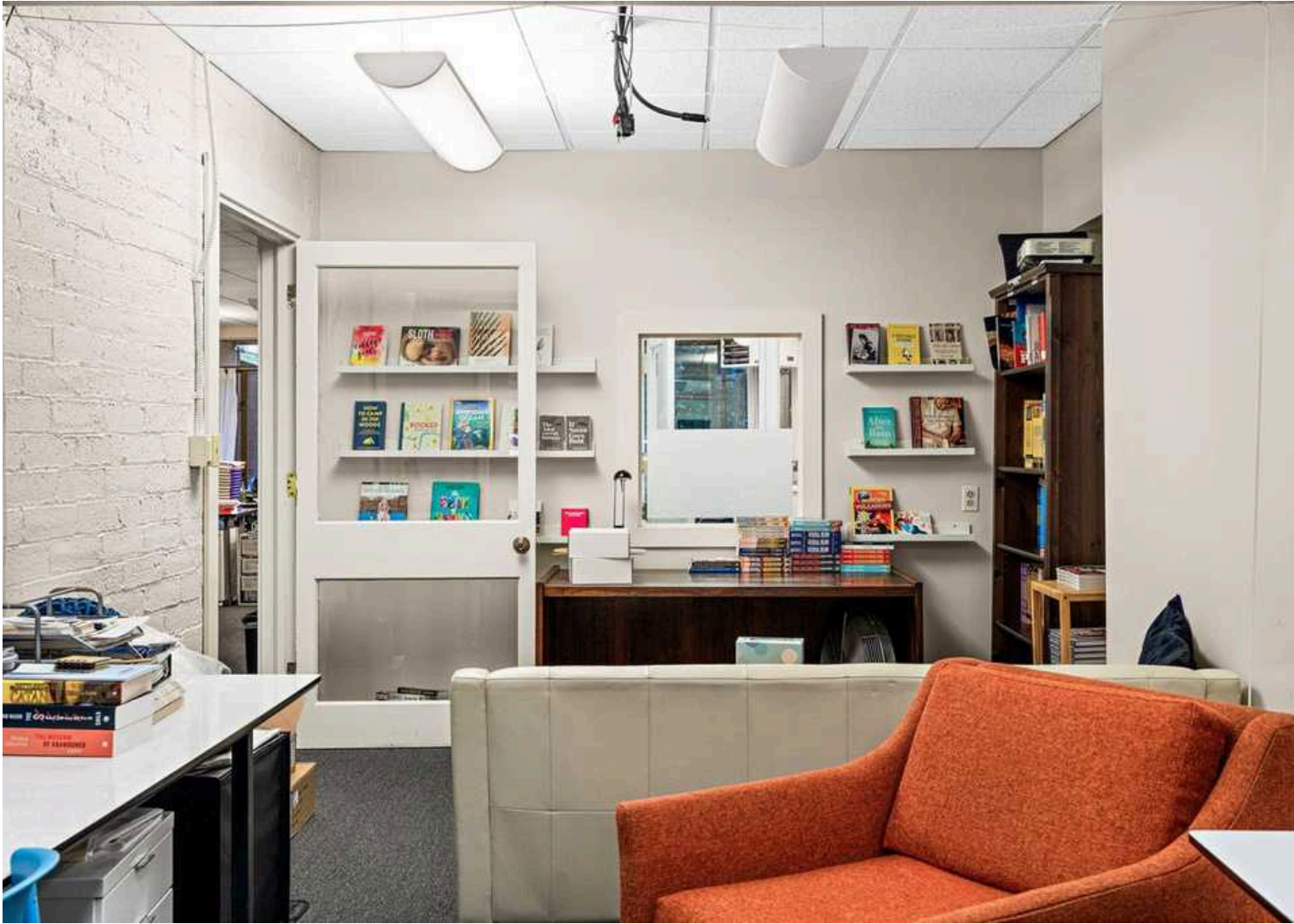
Ground Floor Office/Retail Space
Available January 1st

Prime street front location with great visibility and character in the highly sought-after Capitol Hill neighborhood. This versatile space features a well designed layout with private offices, a conference room, open collaboration areas, two bathrooms, and a charming private back patio.

Contact the agent to schedule a viewing.

CAPITOL HILL

This lively neighborhood filled with contemporary bars, eateries, and coffee shops along with retail shops ranging from indie and antique to higher-end brands - there truly is something for everyone. Whether you are a student, professional, or a family there is always something fun to do in he neighborhood. Some highlights include the historic Volunteer Park, the Asian Art Museum, Cal Anderson Park, and of course the Capitol Hill Block Party which draws in music-lovers each summer for a weekend of concerts. See below for our buildings in the area to find your perfect apartment home in Capitol Hill.





Listing Details | Office For Lease

Suite	C	Show Instructions	Call broker
Secondary Uses	Retail	Vacant	No
Sublease	-	Available Date	1/01/2025
Total Available Space	2,306 SF	Days On Market	42 days
Min Div/Max Contig	1000/2,306 SF	Date Listed	10/29/2024
Asking Rate	\$25.00 - \$30.00 Annual/SF.	Last Modified	11/05/2024
Monthly Rate	\$4,804	Listing ID	41356819
Lease Type	NNN	Restrooms	2
Expenses	\$9.40	Parking Spaces	2

Property Details

Building Class	B	Property Rent	\$32.46/SF (Average)
Elevators	Not present	Building Status	Existing
Property Type	Office	Building Size	5,448 SF
Sub Type	Mixed Use	Land Size	0.1 Acres / 4,356 SF
Zoning	MR(M)	Number of Buildings	1

This beautiful vintage 1925 building is in one of the most desirable neighborhoods of Seattle...Capitol Hill where the energy and distinct culture brings its own unique vibe and atmosphere of grungy, vibrancy and liveliness. This trendy area provides a quiet residential feel while still offering the excitement of an urban environment within reach of artistic twist, music, arts, theater, nightlife, and culture.

Walk Score of 96!

It is a mixed-use building, including over 2,000 square feet of commercial retail/office space and two large 850 to 900 sq/ft one-bedroom apartments. Tenants enjoy access to a private patio and community garden space. This unique amenity is shared among the buildings in the portfolio.

Originally constructed in 1925, this building has since experienced significant updates. The improvements include new security system and updated electrical service, wiring and sub panels throughout the building, copper plumbing, a 30-year TPO membrane roof installed in 2014 and life safety improvements including an upgraded fire alarm system.

