
FOR LEASE: 6,647 SF STANDALONE OFFICE BUILDING

Brookside Commons

310 3rd Avenue NE | Issaquah, WA





BROOKSIDE COMMONS

Property Highlights

6,647 SF Standalone Building Available

\$30/SF NNN, NNN \$13.15 PSF

Available w/ 60 Days' Notice

23 Covered Parking Stalls

Easy Access to I-90

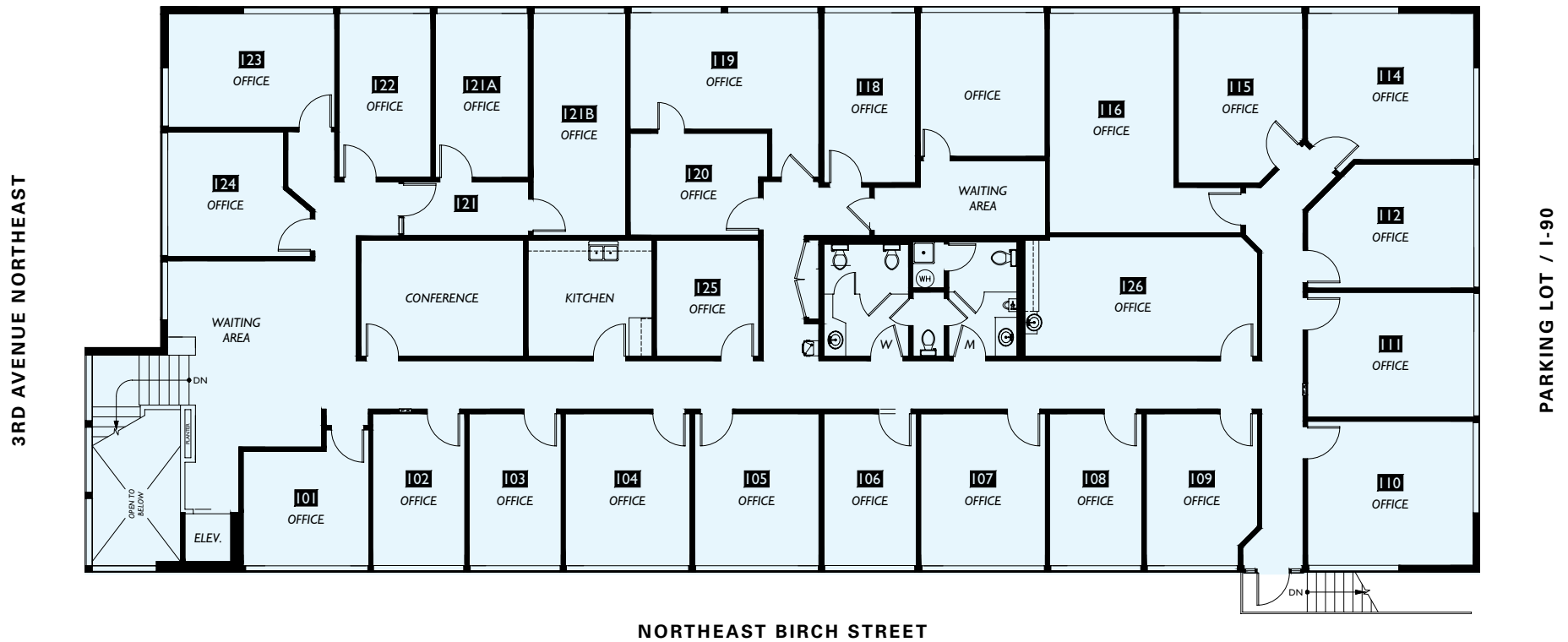
Building Signage Available

Located Across from New Park in Issaquah

Ideal for Office or Educational use

BROOKSIDE COMMONS

6,647 SF – As-Built | Available Now



BROOKSIDE COMMONS

Proposed Plans & Renderings

Exterior Updates



Cozy creekside location with 360 views, nestled tranquility between trees

Close to interstate for easy commute

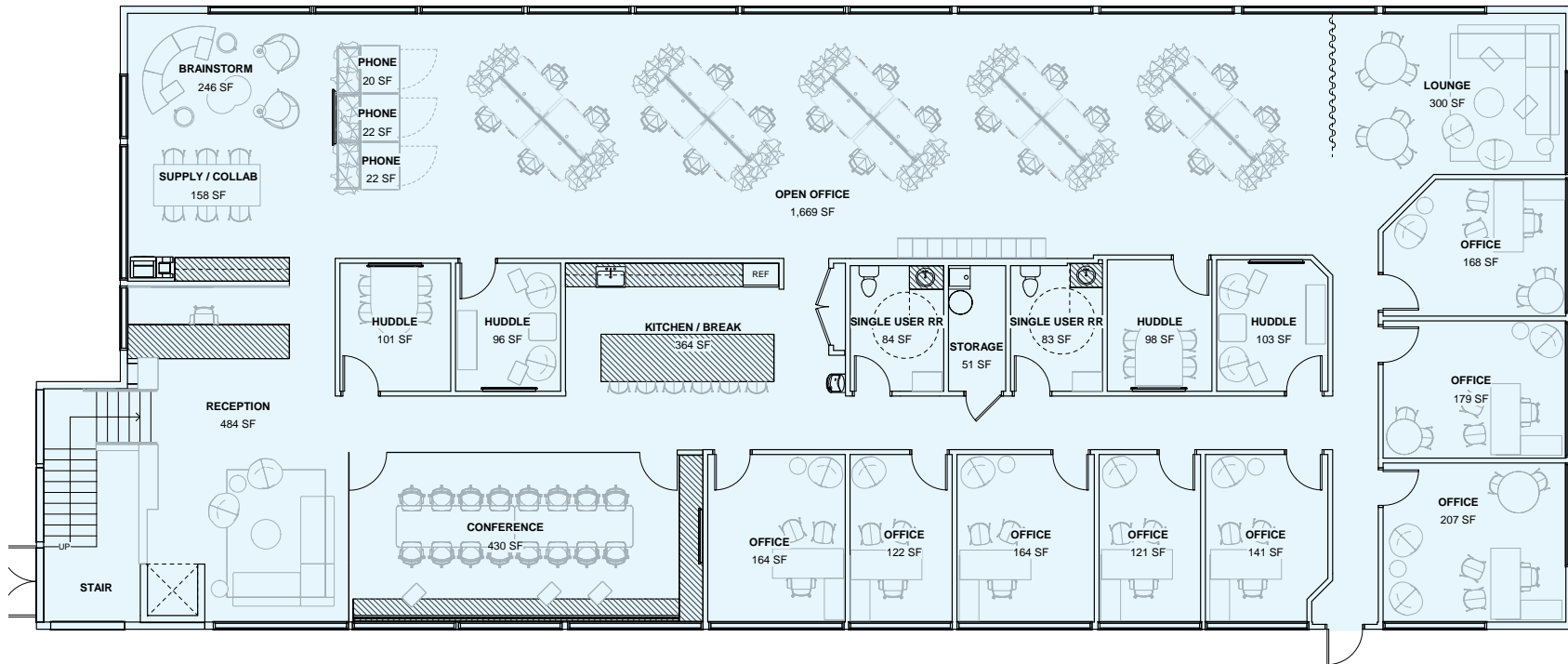
Adjacent to green space and stream

Adjacent to community green space and walkable restaurants

Complimentary covered parking

BROOKSIDE COMMONS

Proposed Plans | Office Test Fit



- 8 Private Offices
- 4 Huddle Rooms
- 1 Conference Room
- 20 Workstations
- 3 Phone Booths
- Brainstorm Area
- Supply & Collab Table
- Welcoming Reception
- Large Open Kitchen
- Break/Lounge Space
- 2 Single Use ADA Restrooms
- Storage & Utility Closet
- Staff Lockers

Reception Rendering

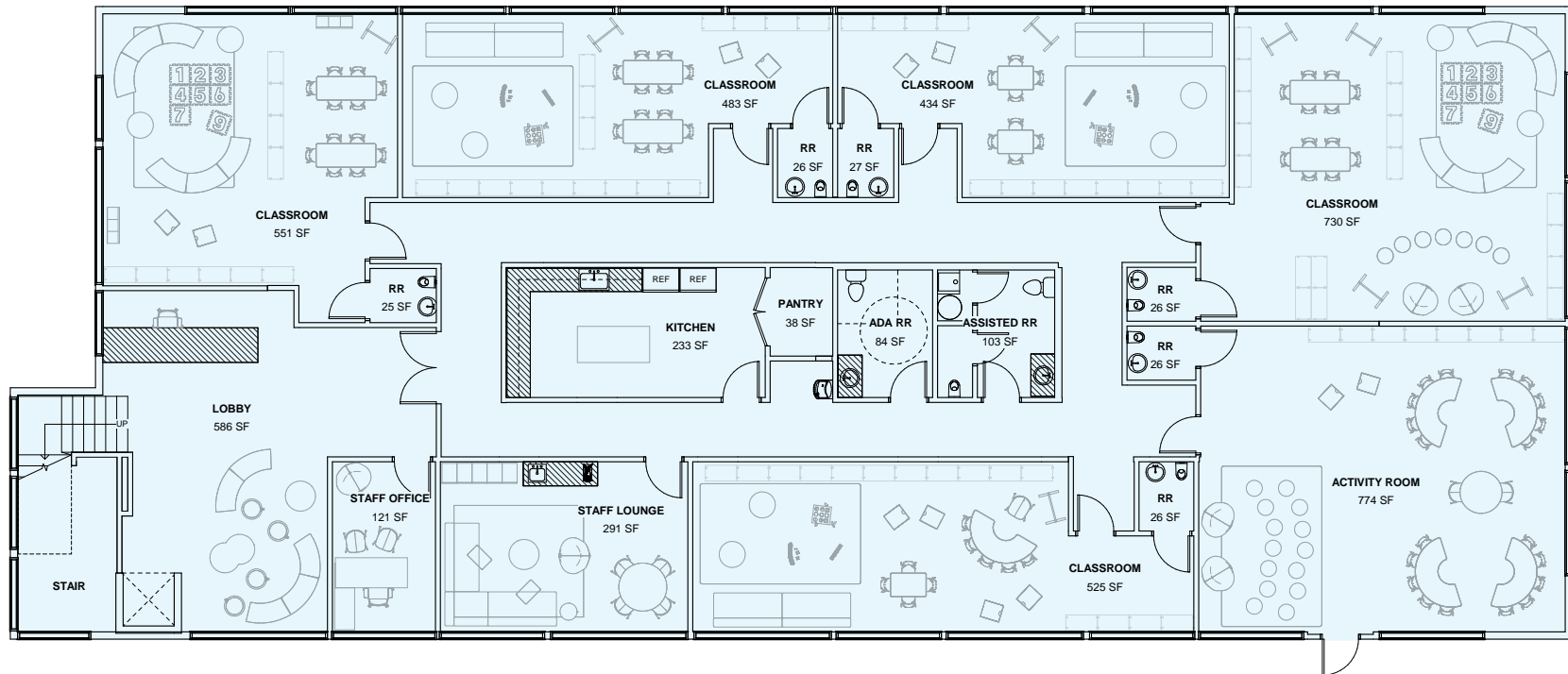


Open Office Rendering



BROOKSIDE COMMONS

Proposed Plans | Daycare Test Fit



- 5 Classrooms, 1 youth toilet each
- 1 Activity Room
- Secure Kitchen and Pantry
- Secure Lobby
- Staff Office
- Staff Lounge
- ADA and assisted use Restrooms at core

Daycare Rendering



BROOKSIDE COMMONS



Brookside Commons

310 3rd Avenue NE | Issaquah, WA

For more information contact:

Alex Wheatley

Director

t 425-941-3003

alex.wheatley@nmrk.com

The distributor of this communication is performing acts for which a real estate license is required. The information contained herein has been obtained from sources deemed reliable but has not been verified and no guarantee, warranty or representation, either express or implied, is made with respect to such information. Terms of sale or lease and availability are subject to change or withdrawal without notice. MP-1575

NEWMARK