

# PACIFIC BUSINESS PARK

136 Stewart Road SE, Pacific, WA 98047

**LEE & ASSOCIATES**  
COMMERCIAL REAL ESTATE SERVICES



## INDUSTRIAL FLEX BUSINESS PARK FOR LEASE

### AVAILABLE NOW:

SUITES 1A-B:	1,828 SF   883 SF Office   1 GL
SUITES 1E-F:	1,859 SF   1,001 SF Office   1 GL
SUITES 1G:	420 SF   Second Floor Office
SUITES 2E:	3,381 SF   Small Office   1 GL
SUITES 3A:	1,831 SF   Small Office   1 GL
SUITES 3C:	1,828 SF   Small Office   1 GL

### FEATURES:

- » Lease rate: \$1.50/SF blended, NNN
- » Small bay, grade level loaded suites
- » Hard to find small bay industrial space in Kent Valley
- » Located on Valentine Ave SE and Stewart Rd SE
- » Direct access to SR-167 Hwy located down the street
- » Ideal for manufacturing and auto repair tenants

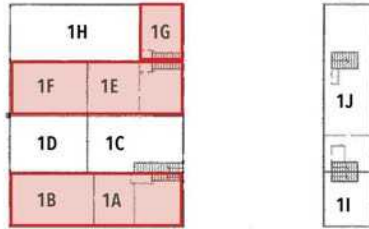
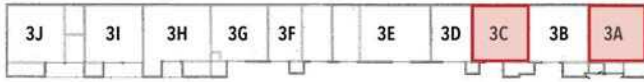


# PACIFIC BUSINESS PARK

136 Stewart Road SE, Pacific, WA 98047



COMMERCIAL REAL ESTATE SERVICES



## AVAILABLE NOW:

SUITE	WAREHOUSE	OFFICE	TOTAL	LOADING
1A-B	945 SF	883 SF	1,828 SF	1 GL Door
1E-F	858 SF	1,001 SF	1,859 SF	1 GL Door
1G	-	420 SF	420 SF	N/A
2E	3,381 SF	Small	3,381 SF	1 GL Door
3A	1,831 SF	Small	1,831 SF	1 GL Door
3C	1,828 SF	Small	1,828 SF	1 GL Door



## CONTACT

**Andrew Hull**

ahull@lee-associates.com

253.444.3023

We obtained the information above from sources we believe to be reliable. However, we have not verified its accuracy and make no guarantee, warranty or representation about it. It is submitted subject to the possibility of errors, omissions, change of price, rental or other conditions, prior sale, lease or financing, or withdrawal without notice. We include projections, opinions, assumptions or estimates for example only, and they may not represent current or future performance of the property. You and your tax and legal advisors should conduct your own investigation of the property and transaction.