

LEASE

MARTIN WAY PROFESSIONAL PLAZA

3905 Martin Way E Olympia, WA 98506



OFFERING SUMMARY

Lease Rate:	\$20 SF/yr
Lease Type:	Modified Gross (MG)
Building Size:	9,600 SF
Available SF:	
Suite A:	2,855 SF
Suite A1:	1,240 SF
Lot Size:	0.81 Acres
Year Built:	1988

PROPERTY OVERVIEW

Professional office building close to amenities. Easy access to I-5 and downtown Olympia and Lacey. Plenty of parking in front and rear of building.

PROPERTY HIGHLIGHTS

- 9 Mostly Furnished Private Offices
- 2 Kitchen Areas
- Conference Space
- Copy Center Space
- Extra Cubicles
- Office Storage (under stairs)
- Private Mezzanine (A2)
- Use of the Main Backlit Monument Sign on Martin Way

Jason Hearn

(360) 701-3490

jason.hearn@coldwellbankercommercialdanforth.com

Bob Fredrickson, CCIM

(206) 595-7232

bfredrickson@cbcworldwide.com



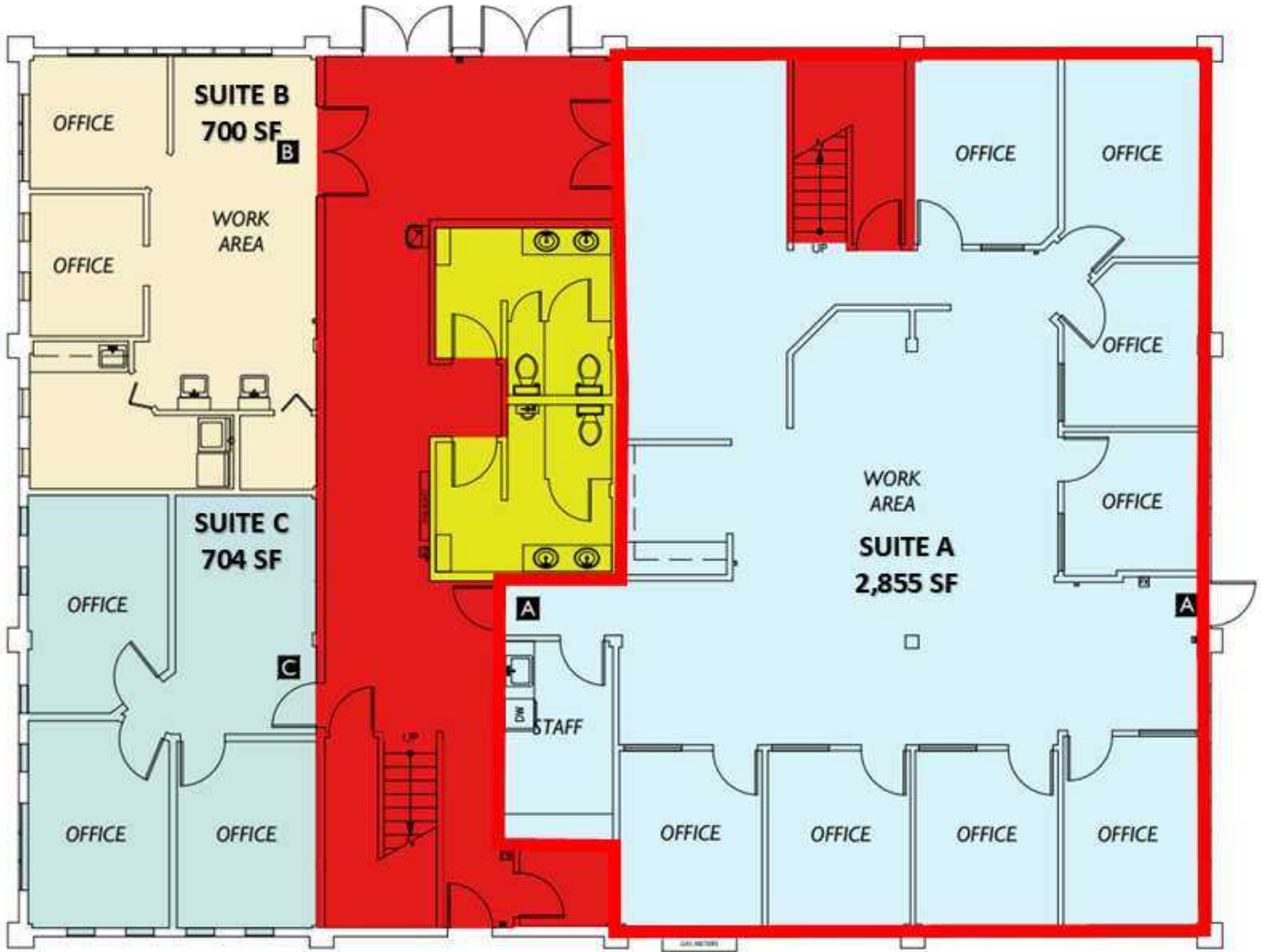
**COLDWELL BANKER
COMMERCIAL**
DANFORTH

LEASE

MARTIN WAY PROFESSIONAL PLAZA

3905 Martin Way E Olympia, WA 98506

Floor 1



Jason Hearn

(360) 701-3490

jason.hearn@coldwellbankercommercialdanforth.com

Bob Fredrickson, CCIM

(206) 595-7232

bfredrickson@cbcworldwide.com



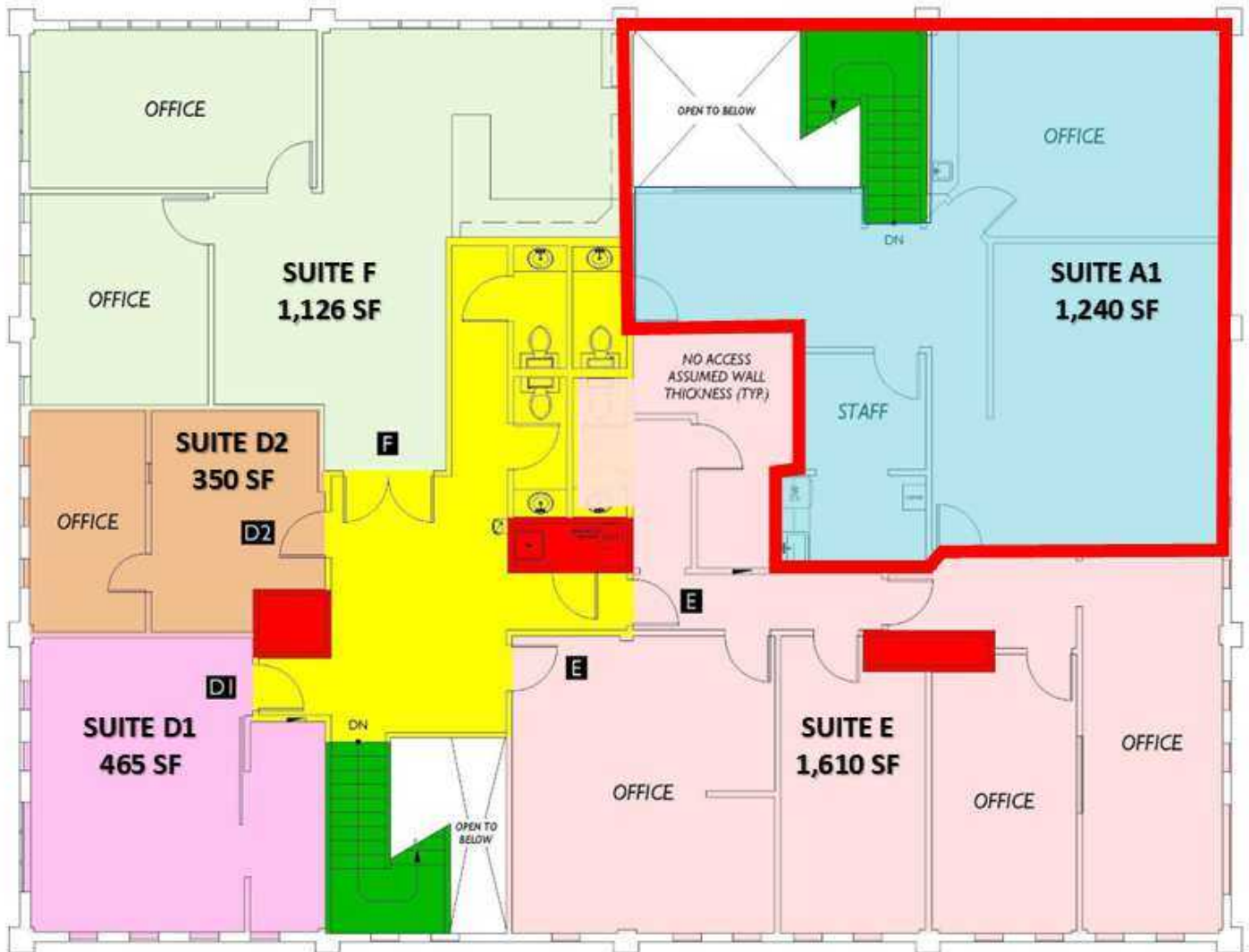
**COLDWELL BANKER
COMMERCIAL**
DANFORTH

LEASE

MARTIN WAY PROFESSIONAL PLAZA

3905 Martin Way E Olympia, WA 98506

Floor 2



Jason Hearn

(360) 701-3490

jason.hearn@coldwellbankercommercialdanforth.com

Bob Fredrickson, CCIM

(206) 595-7232

bfredrickson@cbcworldwide.com

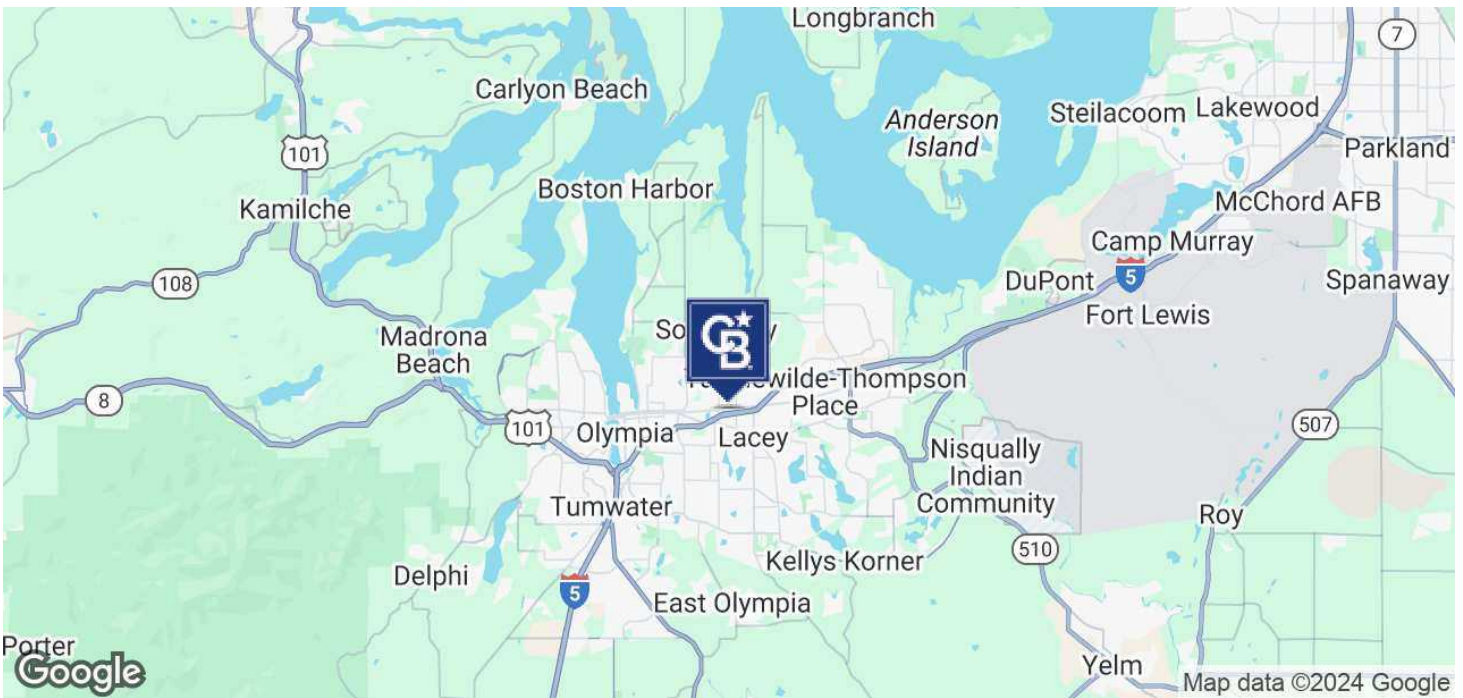


**COLDWELL BANKER
COMMERCIAL**
DANFORTH

LEASE

MARTIN WAY PROFESSIONAL PLAZA

3905 Martin Way E Olympia, WA 98506



Jason Hearn
(360) 701-3490
jason.hearn@coldwellbankercommercialdanforth.com

Bob Fredrickson, CCIM
(206) 595-7232
bfredrickson@cbcworldwide.com



**COLDWELL BANKER
COMMERCIAL**
DANFORTH