

Plaza By The Green **FOR LEASE**

24437

Russell Road
Kent, WA 98032

**1,700 SF of Office Space
Available Now**



Office Space on the Golf Course!



THE ANDOVER
COMPANY, INC.

CORFAC INTERNATIONAL

ARNE SVENDSEN

(206) 336-5331

asvensen@andoverco.com

PROPERTY HIGHLIGHTS



Golf Course

Property

RUSSELL RD

W MEEKER ST

N



WELL MAINTAINED CENTER, EV CHARGING STATIONS ON-SITE!



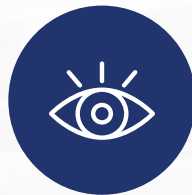
HIGH TRAFFIC COUNTS - 38,283 CARS DAILY



LOCATED ADJACENT TO RIVERBEND GOLF COMPLEX



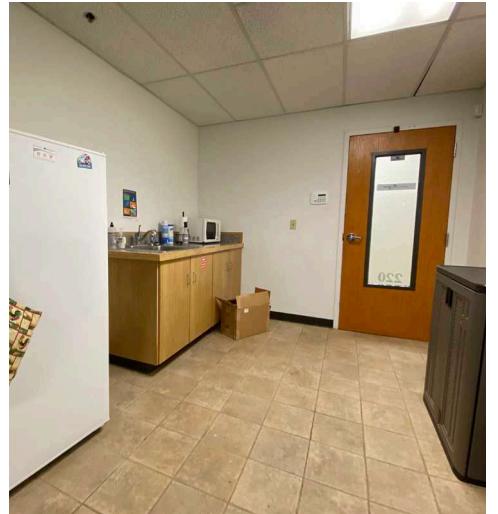
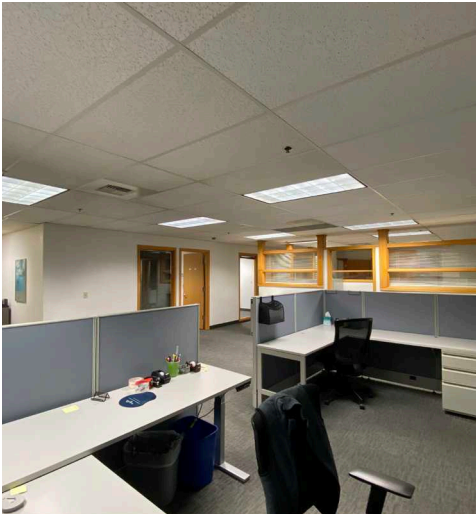
STRONG LOCATION AT STRATEGIC INTERSECTION



HIGH VISIBILITY WITH GOOD INGRESS/EGRESS



GREAT SIGNAGE, ACCESS TO 1-5 AND HWY-167

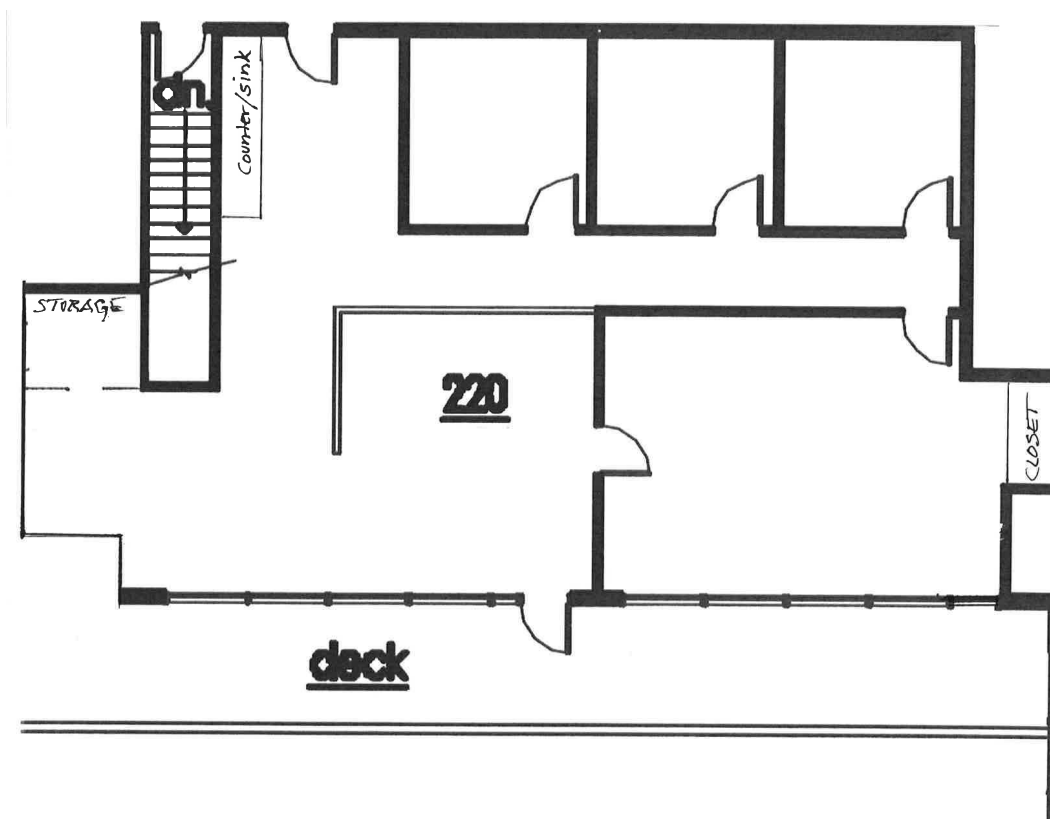


Suite 220

Total SF: 1,700 SF

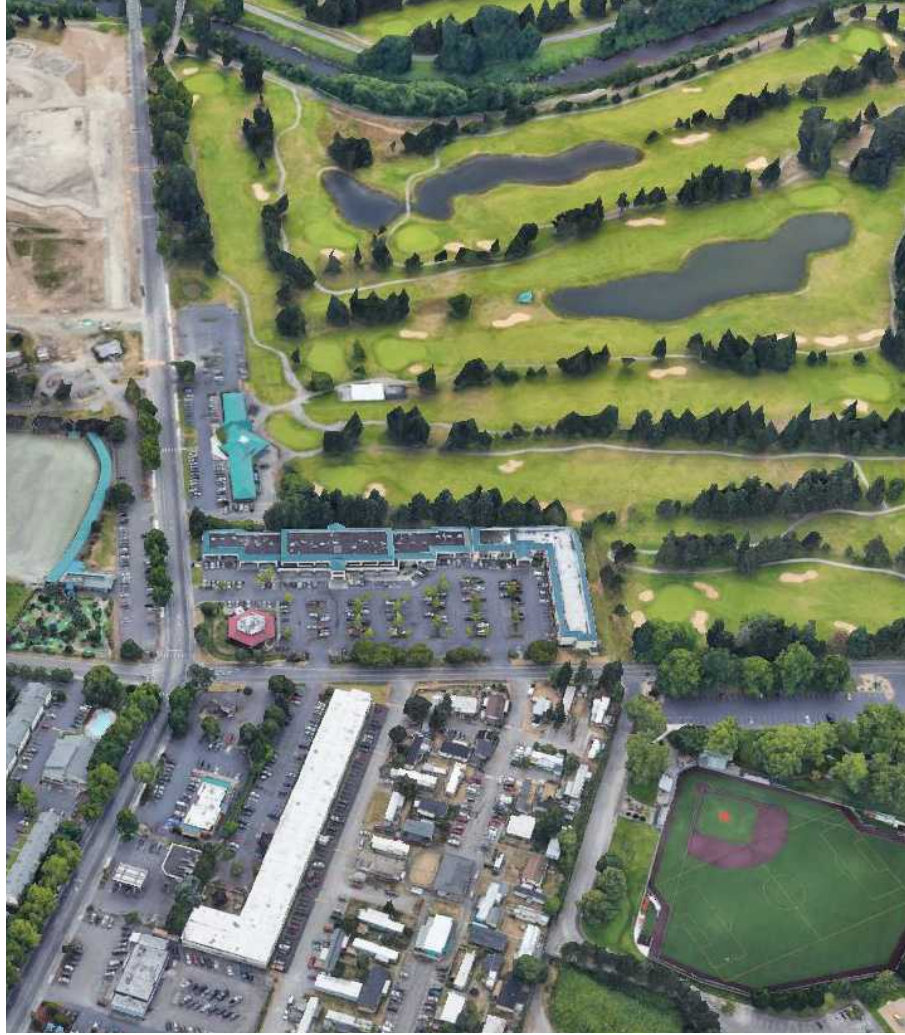
Available: **Now**

Rate: **\$24/SF Full Service including Janitorial**



24437

Russell Road
Kent, WA



24437 Russell Road, Kent, WA | The Andover Company, Inc.

The information contained herein has been obtained from reliable sources, but is not guaranteed. A prospective buyer/tenant should verify each item relating to this property and all information contained herein.