



 **JLL** SEE A BRIGHTER WAY

For sublease

Available Now

Pacific Business Park, Building 6

6970 S 220th Street Kent, WA 98032

Property specifications

- 7,500 SF Shell
- 1,665 SF Office
- 20' clear height
- 2 dock-high doors
- Rare dock-high small bay space
- Master Lease Expires February 2026
- Contact brokers for rates
- **Do not disturb tenant**

Connor Raffety

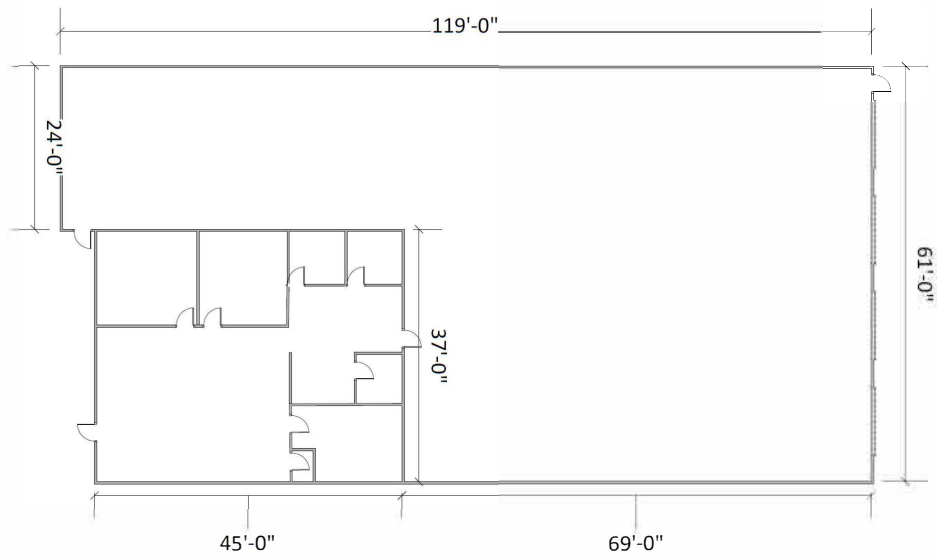
Vice President

Connor.Raffety@jll.com

+1 206 437 1006

jll.com

Jones Lang LaSalle Brokerage, Inc.



Connor Raffety

Vice President

Connor.Raffety@jll.com

+1 206 437 1006

jll.com

Jones Lang LaSalle Brokerage, Inc.