



TRILOGY I-90

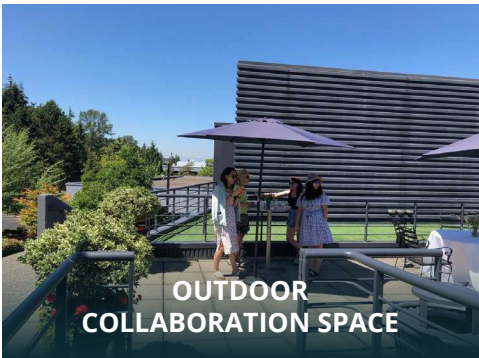
IDENTITY & VALUE IN BELLEVUE

UP TO 36,437 RSF AVAILABLE

3600 136th Place SE, Bellevue, WA 98006



SIGNAGE VISIBLE FROM I-90



OUTDOOR COLLABORATION SPACE



SECURE BIKE STORAGE & SHOWERS



NEARBY FOOD OPTIONS

MULTIPLE SPACES AVAILABLE FROM 3,439 RSF TO 23,663 RSF

SUITE NUMBER	SPACE AVAILABLE	AVAILABILITY
1st floor	23,663 RSF	Immediately
250	9,335 RSF	Immediately
400	9,711 RSF	Immediately

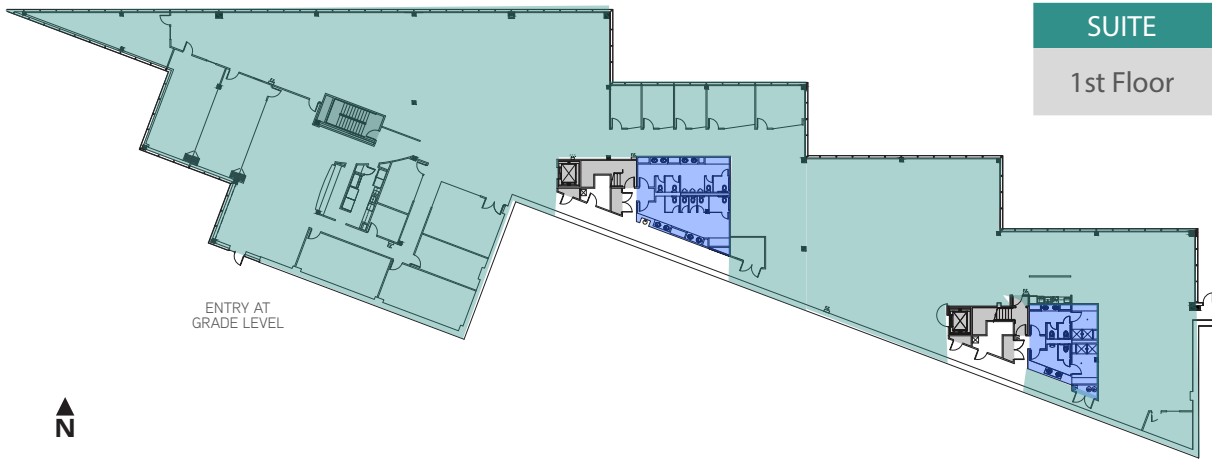
UNMATCHED EXPOSURE

- Three exterior signs
- Large exterior building signage visible from I-90
- Monument signage
- Full floor & full building branding opportunity
- Interior lobby branding

EXCEPTIONAL EXPERIENCE

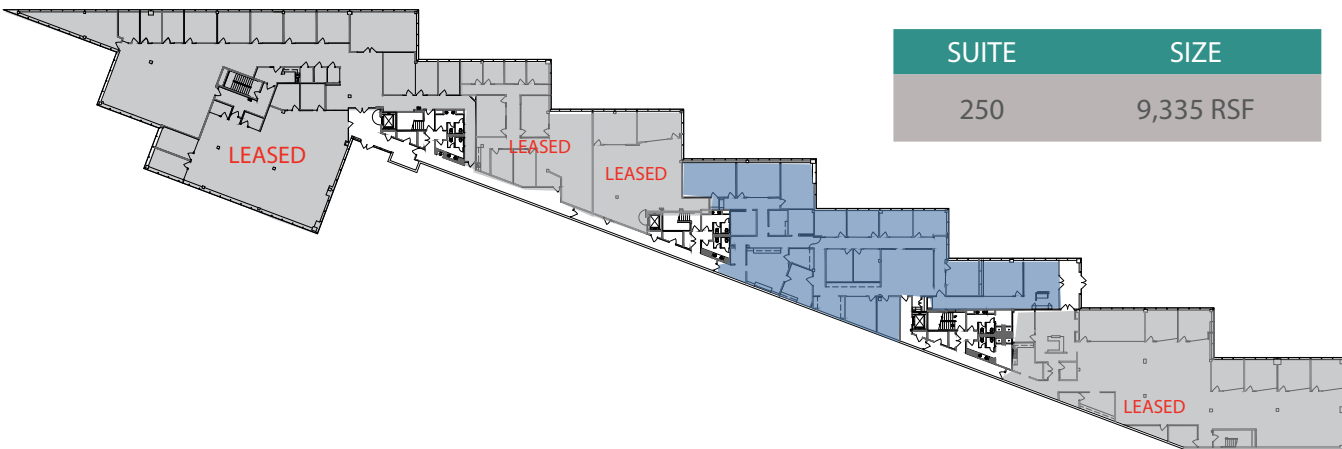
- Park at your door with immediate suite access
- Controlled access for each floor
- Vibrant tech community
- Striking architecture with modern design
- Creative, tech-oriented office space

1ST FLOOR



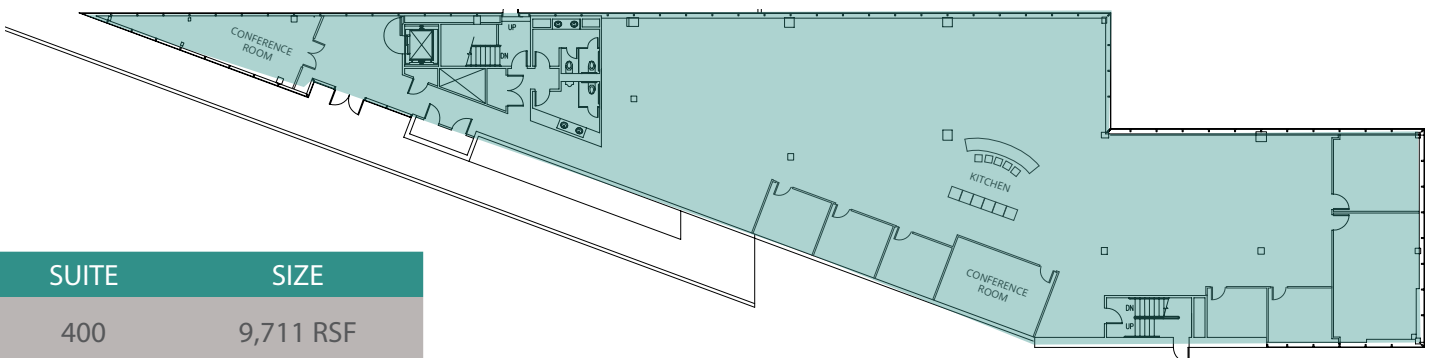
SUITE	SIZE
1st Floor	23,663 RSF

2ND FLOOR



SUITE	SIZE
250	9,335 RSF

4TH FLOOR



SUITE	SIZE
400	9,711 RSF

ADVANTAGEOUS AMENITIES

- FREE covered and surface parking: 3.33/1,000
- Large windows with abundant natural light
- Secure bike storage
- Mens and womens showers and lockers
- Rooftop deck areas

WINNING LOCATION

- Prime Bellevue I-90 tech corridor location
- Immediate access to I-90 and I-405
- Adjacent to the Eastgate Park & Ride
- 10 minutes to Downtown Bellevue
- 5 minutes to more than 125 dining/service amenities

SEATTLE CBD
15 MINUTE DRIVE



LAKE
WASHINGTON

MERCER ISLAND
9 MINUTE DRIVE

DOWNTOWN BELLEVUE
10 MINUTE DRIVE



FACTORIA
2 MINUTE DRIVE



ADJACENT TO PARK & RIDE



DIRECT ACCESS TO I-90 & I-405



2-5 MINUTES TO NEARBY AMENITIES

3600 136th Place SE, Bellevue, WA 98006

Derek Heed
425-453-3133
derek.heed@colliers.com

Kendra Mills
425-453-3135
kendra.mills@colliers.com



Colliers International makes no guarantees, representations or warranties of any kind, expressed or implied, regarding the information including, but not limited to, warranties of content, accuracy and reliability. This publication is the copyrighted property of Colliers International and/or its licensor(s) 2024. All rights reserved.