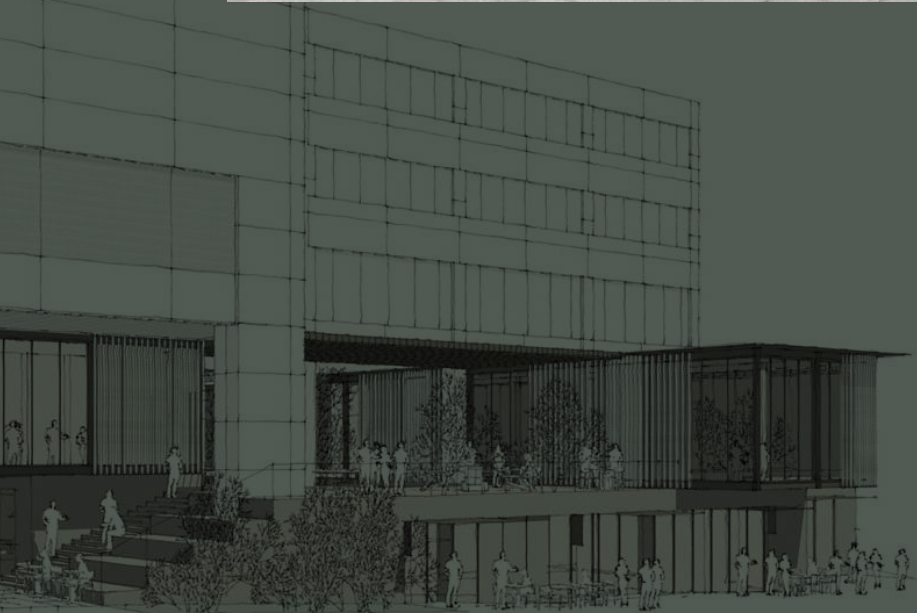
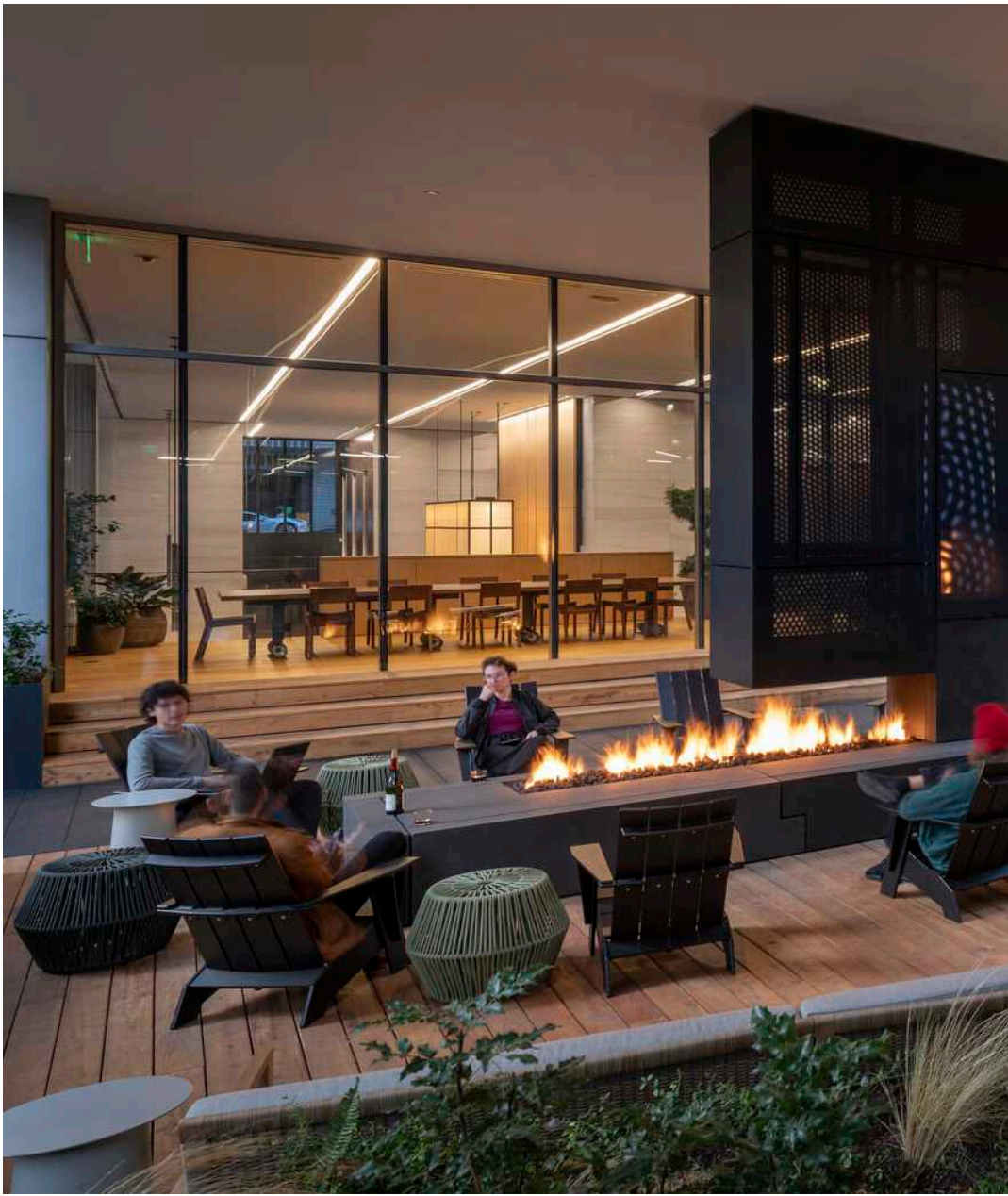


800
fifth

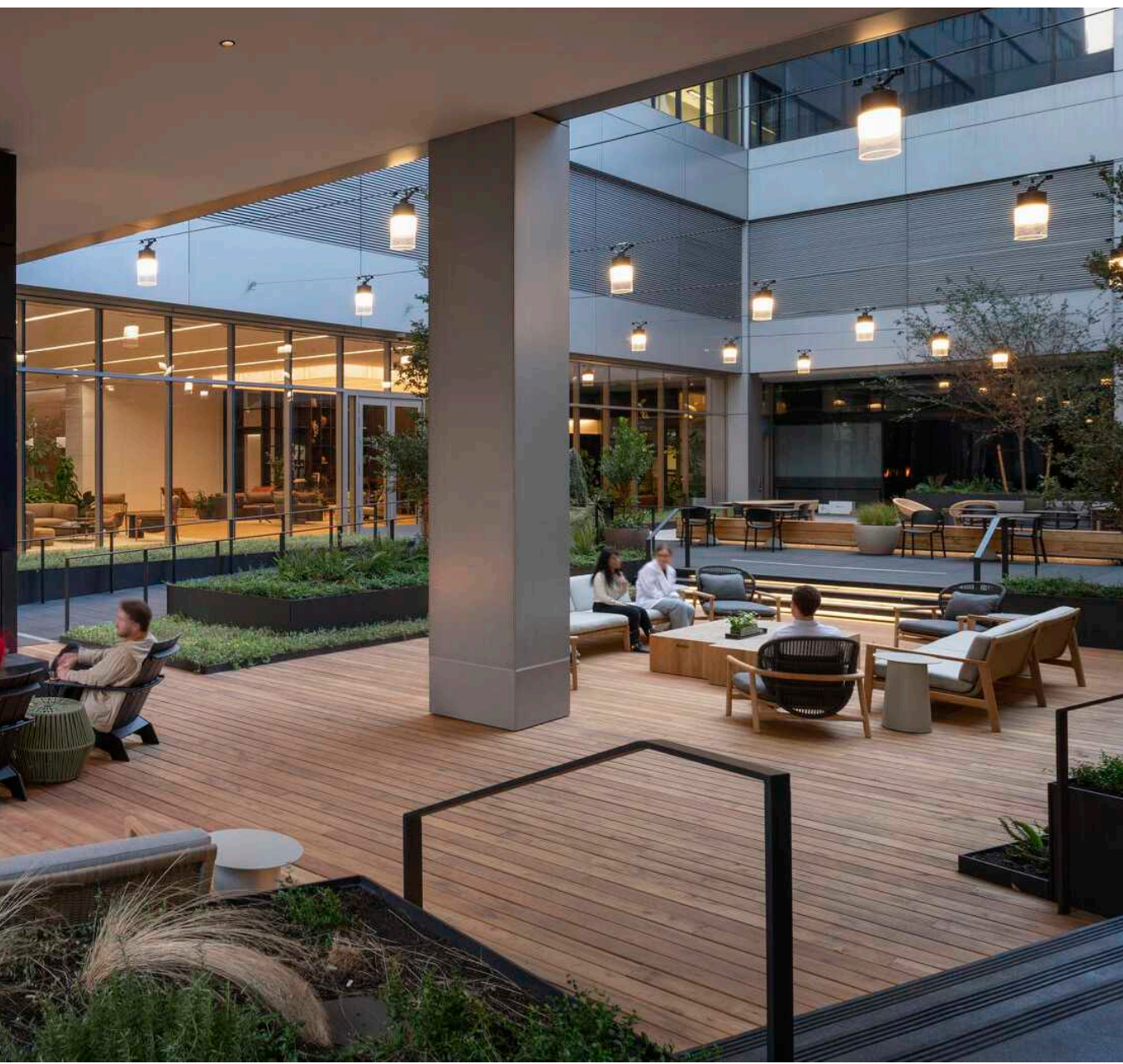


EQ Office

CBRE



“Where people feel
welcomed, valued,
and inspired.”



Introducing 800 Fifth

[Click to learn more](#)



Welcome to a workspace that's calibrated with your entire wellbeing in mind.

Here you'll feel empowering support that permeates your company every day – one that puts you at ease, delighting you in the unexpected, and lifting you to greater heights.

This is better than home. This is home plus.

CURRENT AVAILABILITIES

Floor	Suite	RSF	Comments
3	↓ 300	 18,972	Flex/office space with direct access to loading dock.
6	↓ 600	 21,590	Full floor opportunity. Contiguous up to 173,054 RSF.
7	↓ 700	 21,606	Full floor opportunity. Contiguous up to 173,054 RSF.
8	↓ 800	 21,606	Full floor opportunity. Contiguous up to 173,054 RSF.
9	↓ 900	 21,606	Full floor opportunity. Contiguous up to 173,054 RSF.
10	↓ 1000	 21,544	Full floor opportunity. Contiguous up to 173,054 RSF.
11	↓ 1100	 21,402	Full floor opportunity. Contiguous up to 173,054 RSF.
12	↓ 1200	 21,850	Full floor opportunity. Contiguous up to 173,054 RSF.
13	↓ 1300	 21,850	Full floor opportunity. Contiguous up to 173,054 RSF.
16	↓ 1650	 8,955	Spec suite with a mix of open space and interior private offices, kitchen and large conference room.
17	↓ 1700	 21,850	Full floor opportunity with a mix of private offices and open space.
24	↓ 2400	 22,408	Move-in ready, full floor opportunity with a mix of private offices and open space.
29	↓ 2900	 22,408	Move-in ready, full floor opportunity with great views and heavy build-out.
34	↓ 3400	 22,900	Full floor opportunity with heavy build-out. Views of Elliott Bay, the Olympic Mountains, Cascades, and the city. Contiguous up to 68,700 RSF.
35	↓ 3500	 22,900	Full floor opportunity with heavy build-out. Views of Elliott Bay, the Olympic Mountains, Cascades, and the city. Contiguous up to 68,700 RSF.
36	↓ 3600	 22,900	Full floor opportunity with heavy build-out. Views of Elliott Bay, the Olympic Mountains, Cascades, and the city. Contiguous up to 68,700 RSF.
37	↓ 3750	 9,279	Western facing suite with a mix of private offices, meeting rooms and open space. Excellent views.
38	↓ 3810	3,880	Southeast corner suite with open space, large conference room and kitchen.
38	↓ 3850	 4,938	Western facing suite with heavy build-out and views of Elliott Bay and the Olympic Mountains.
38	↓ 3860	 1,780	Suite features elevator lobby exposure and nice eastern views.
39	↓ 3950	3,765	West facing suite with open space, large conference room and kitchen. Available July 1, 2025
39	↓ 3975	 6,888	Southwest corner suite with open space, two conference rooms, meetings rooms, kitchen, and views of Elliott Bay and the Olympic Mountains.
40	↓ 4000	22,806	Full floor suite with mix of open space, conference rooms and interior private offices. Available July 1, 2025
41	↓ 4100	 22,865	Full floor in white box condition with unobstructed views. Connected via stairs with Suite 4200 for 45,730 SF.
42	↓ 4200	 22,865	Full floor in white box condition with unobstructed views. Connected via stairs with Suite 4100 for 45,730 SF.

ABOUT





ATMOSPHERE

Our space feels welcoming,
comfortable and approachable.

COMMUNITY

More than a space. A community
thriving through innovation and
collaboration.

HOSPITALITY

We deliver a level of service that is
unexpected and unheard of in the
industry.

INSPIRATION

This is where great ideas happen,
where genius thrives and focus
reigns supreme.

SERVICES AND OFFERINGS



38th floor conference center



Outdoor plaza and garden area
with seating



Large fitness center and locker rooms with
showers and towel service



Premium bike storage



Quick-service retail
- Starbucks
- Deli & sundries shops

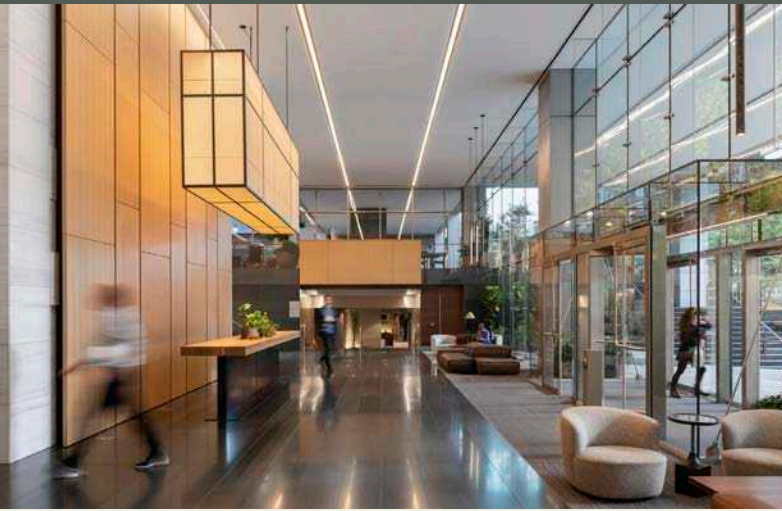


5-story subterranean garage with reserved
executive level parking

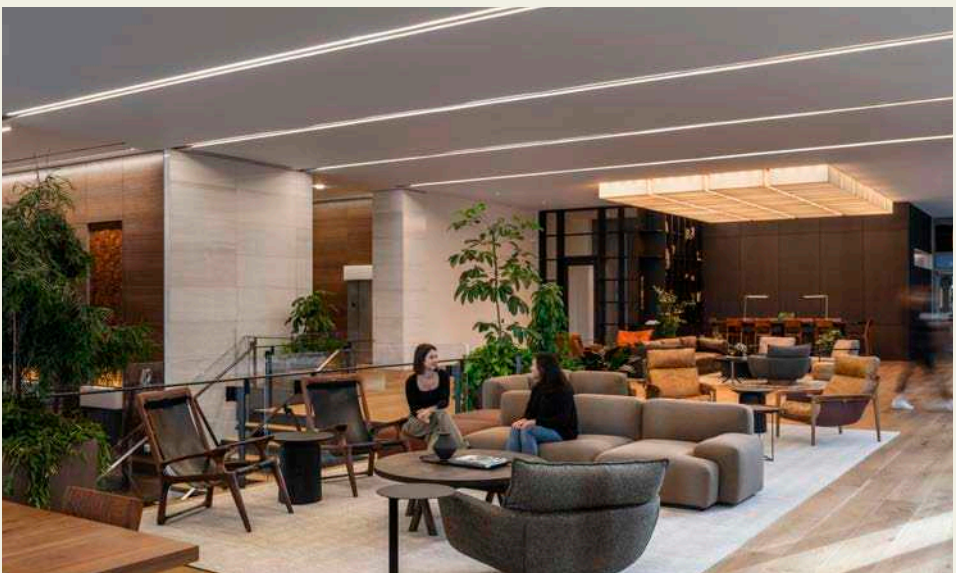




Comprehensive Renovation



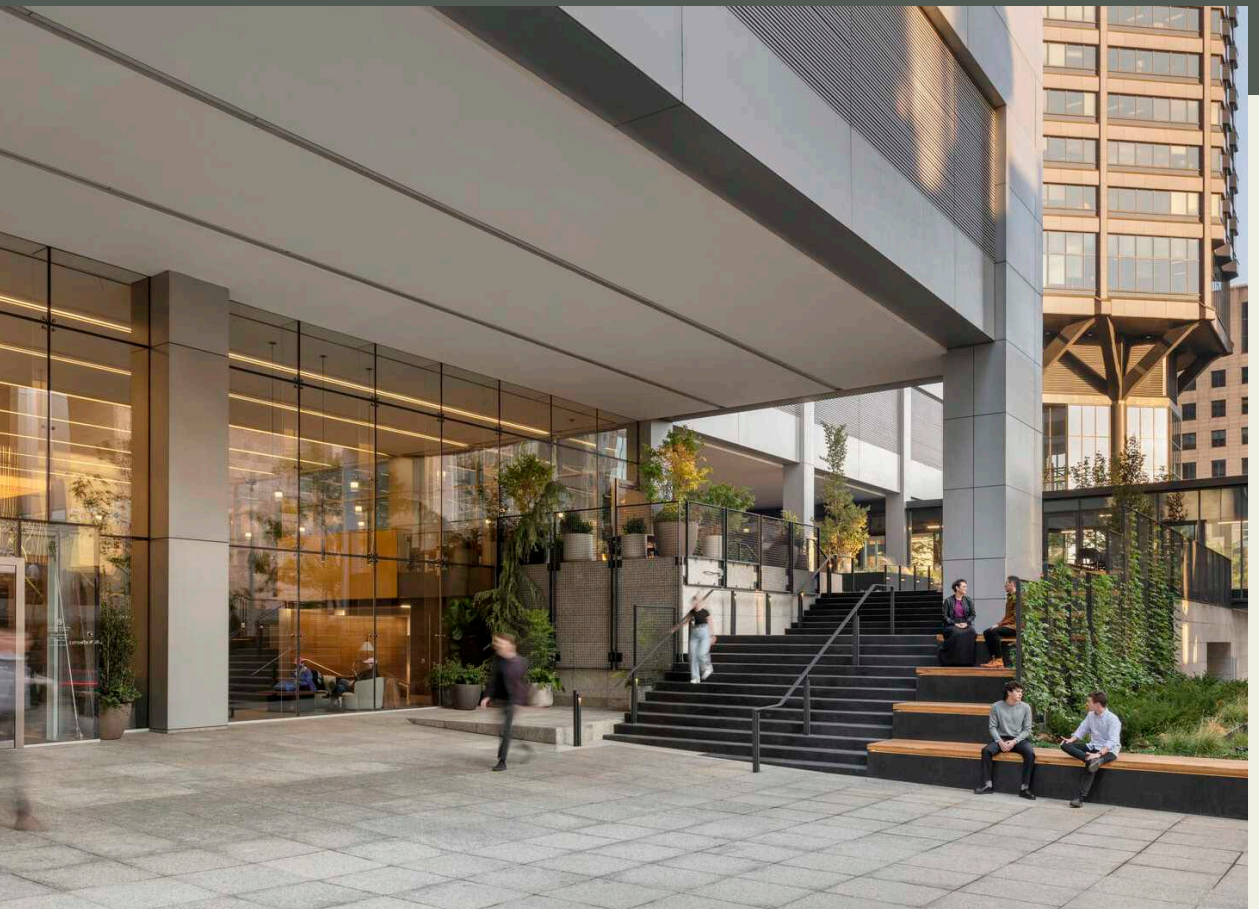
Striking lobby
remodel



New mezzanine seating area



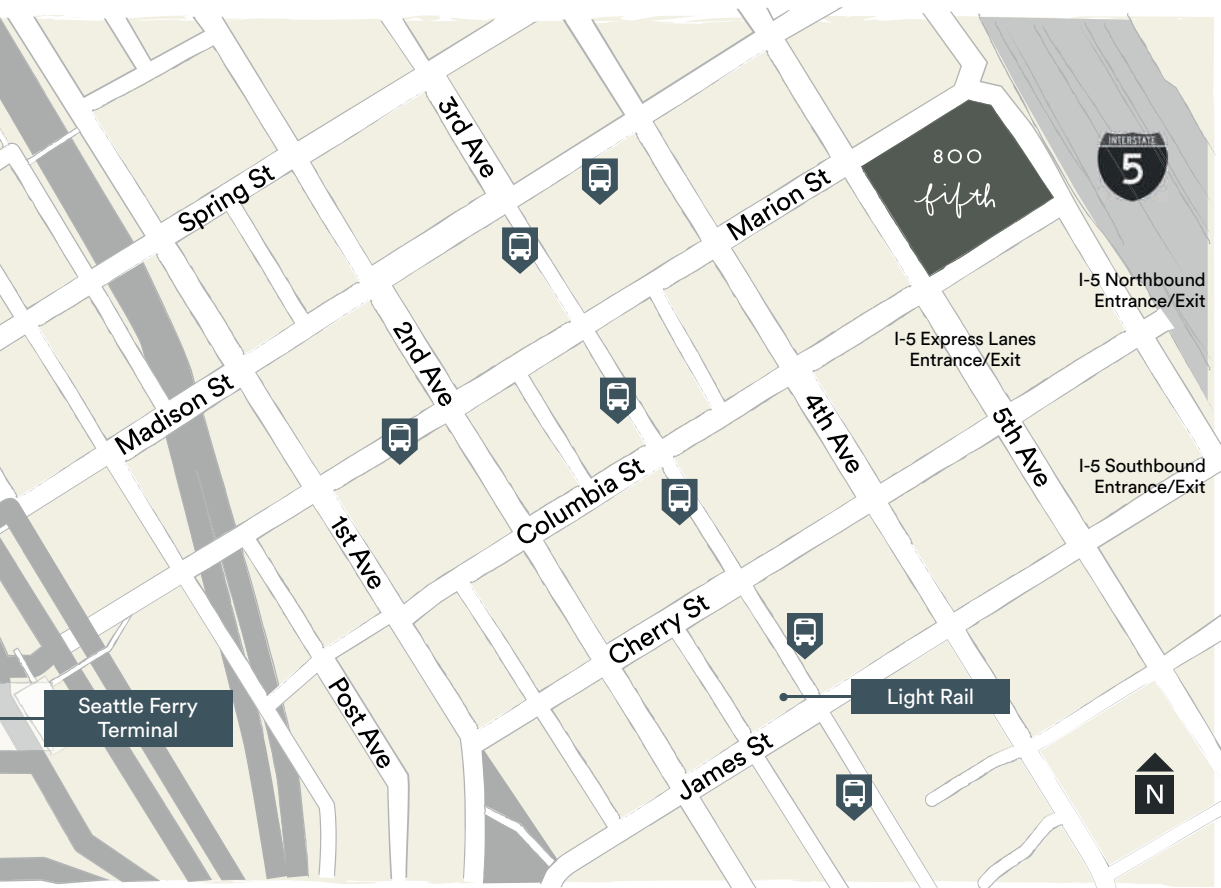
Significant enhancements to on-site amenities



Newly designed exterior building entrance

Excellent mass transit access via Third Avenue and Seattle Ferry Terminal





ICONIC LOCATION

- Steps from plentiful dining, hospitality, retail and business service amenities in Pioneer Square, Pike Place Market, and Downtown retail core.
- Underground pedestrian tunnel and concourse with direct access to a 3-level atrium with over 30 food, retail & service options.
- Walker's and rider's paradise; Walk Score of 99 and a Transit Score of 100.
- Unrivaled transportation access via I-5 one block away: average travel time by car to I-5 North or South bound is 3 minutes or less.
- 3rd Avenue transit corridor two blocks away.
- Easy walking distance of the Seattle Ferry Terminal.



EQ Office is a leading real estate company focused on bringing humanity back to the workplace. With more than 1,800 customers in over 29 million square feet, EQ Office works with business leaders to find, design and manage balanced workspaces that inspire talent.



CBRE



CBRE Leasing Contacts:

Scotta Ashcraft
Senior Vice President
scotta.ashcraft@cbre.com
206-292-6063

Nick Carkonen
Senior Vice President
nick.carkonen@cbre.com
206-292-6039

Riley Shephard
First Vice President
riley.shephard@cbre.com
425-462-6932

Property Contact:

Nicki Sautel
Property Manager
nsautel@eqoffice.com
206-962-2500

EQ Leasing Contact:

David Marks
Director - Leasing
dmarks@eqoffice.com
425-753-6759



[800fifthavenue.com](https://www.800fifthavenue.com)

© 2022 CBRE, Inc. All rights reserved. This information has been obtained from sources believed reliable, but has not been verified for accuracy or completeness. You should conduct a careful, independent investigation of the property and verify all information. Any reliance on this information is solely at your own risk. CBRE and the CBRE logo are service marks of CBRE, Inc. All other marks displayed on this document are the property of their respective owners, and the use of such logos does not imply any affiliation with or endorsement of CBRE. Photos herein are the property of their respective owners. Use of these images without the express written consent of the owner is prohibited. 12-09-24 AS

