

# SODO - 6<sup>th</sup> & Lander

2450 6<sup>th</sup> Ave S., Units 41A, 40B&C  
Seattle, WA 98134



# FOR LEASE

## Industrial Warehouse

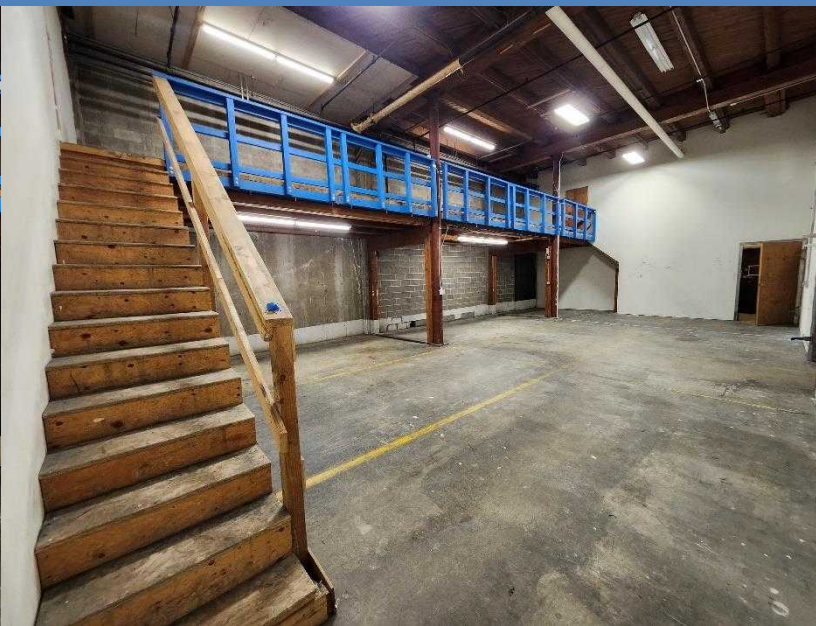
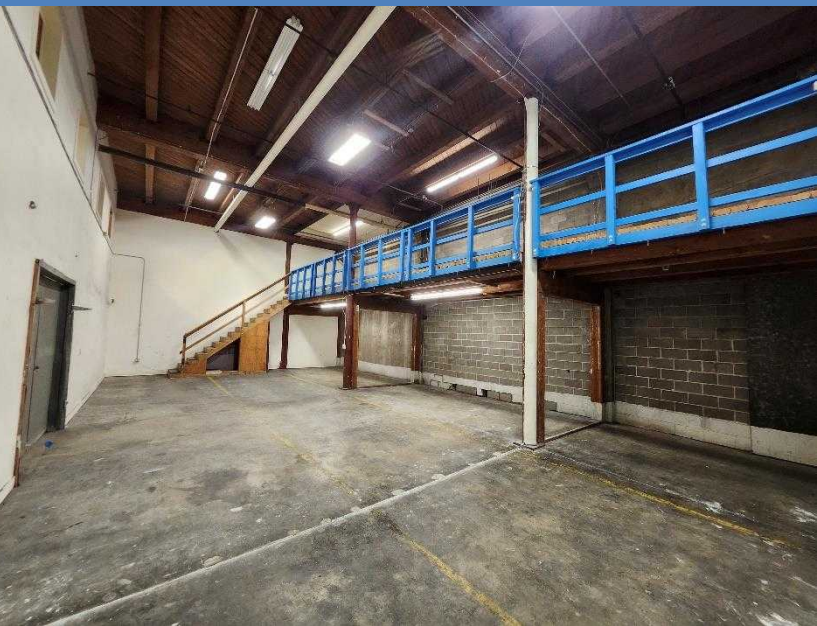
CONTACT:

MARK TEMMEL  
(206) 307-5726  
mark@temmelre.com  
Temmel Real Estate

# SPACE DETAILS

Industrial warehouse space available now. Units 41A, 40B&C is 1,551 SF of ground floor space and 938 SF of mezzanine space for a total of 2,489 SF (usable). Ceiling height is 20' and there are two doors into the space via a common internal hallway. Asking rate of \$3,500 gross which includes utilities minus janitorial and internet. Located one block from the SODO light rail station. There is free street parking around the building. Easy access to I-5, Hwy 99, and I-90.

[VIDEO TOUR](#)



Square Feet	3,056 (BOMA)
Base Rent	\$3,500/month
NNN	n/a
Available	Now
Units	41A, 40 B&C

