

FOR LEASE

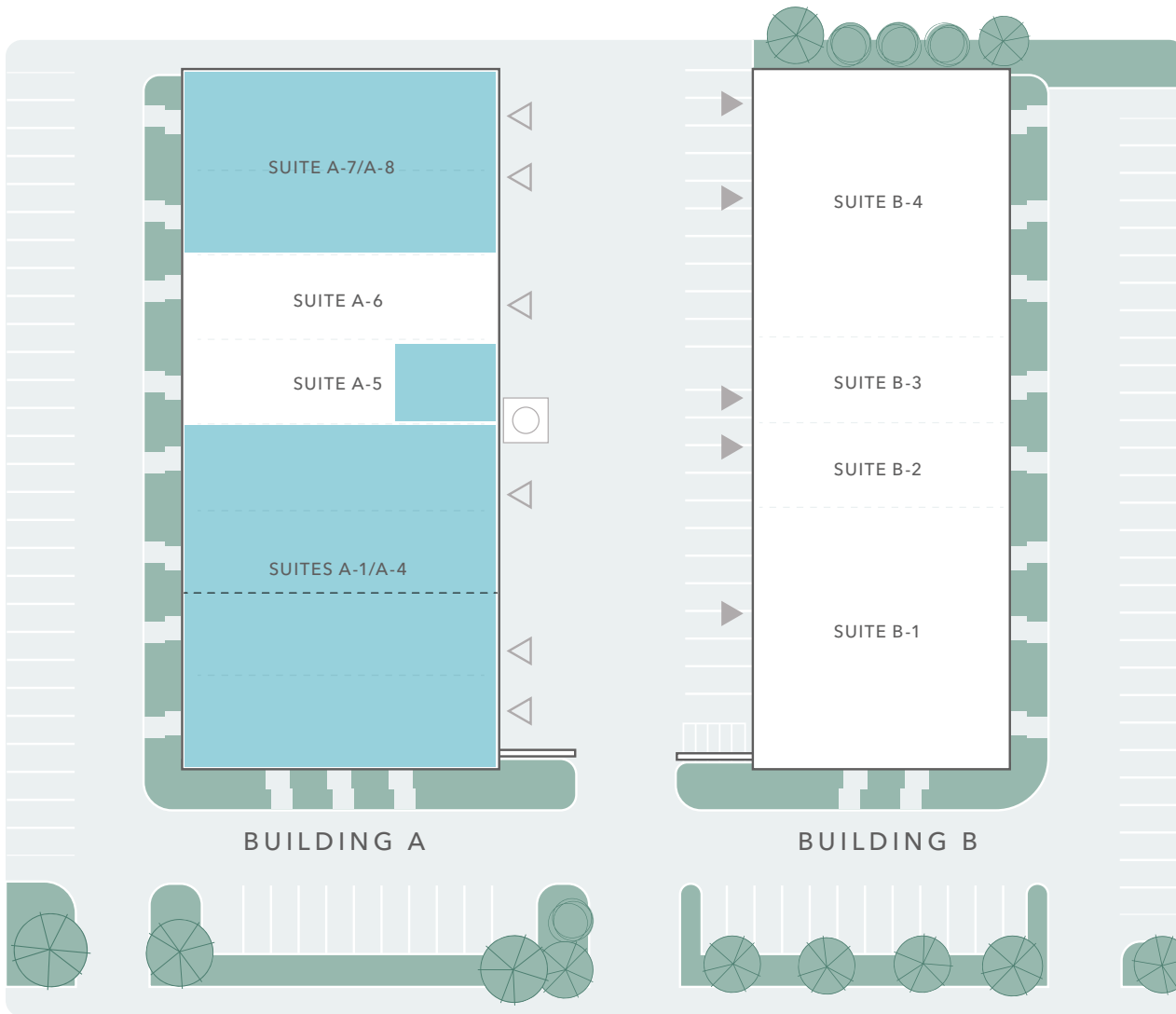
# GALT CENTER

*Office / Warehouse Suites  
Available For Lease*

917 134TH ST SW | EVERETT, WA



# AVAILABILITIES OVERVIEW



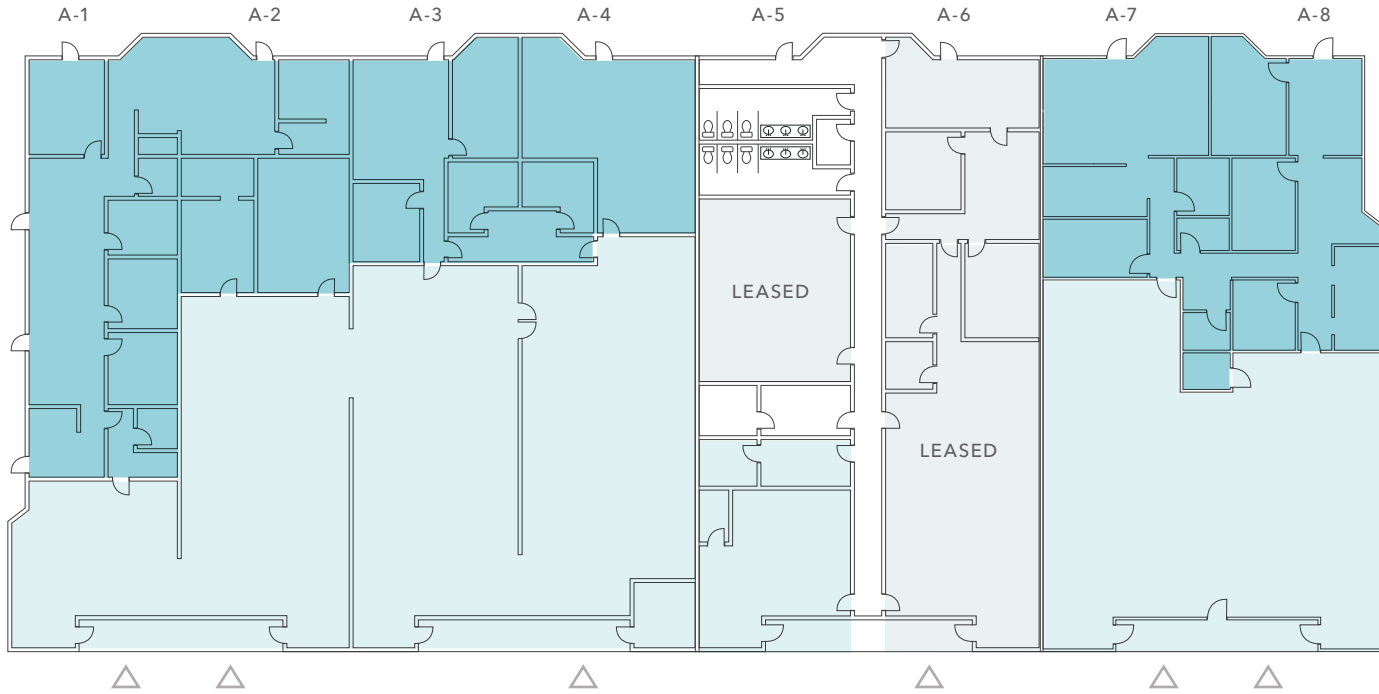
<b>BLDG A</b>	Office	Warehouse	Total
SUITE A-1/A-2	2,952 SF	2,415 SF	5,367 SF
SUITE A-3/A-4	1,878 SF	3,489 SF	5,367 SF
SUITE A-1/A-4	3,757 SF	6,977 SF	10,734 SF
SUITE A-5	0 SF	600 SF	600 SF
SUITE A-7/A-8	2,475 SF	3,025 SF	5,500 SF
SUITES A-1 to A-8	6,232 SF	10,602 SF	16,834 SF

## LEGEND

- Available for Direct Lease
- △ Dock-High Loading
- ▲ Grade-Level Loading



# BUILDING A



## LEGEND

- Office
- Warehouse
- △ Dock-High Loading

16,834 SF

AVAILABLE

6,232 SF

OFFICE

10,602 SF

WAREHOUSE

## PROPERTY DETAILS

10'-16' clear height

Climate-controlled warehouse

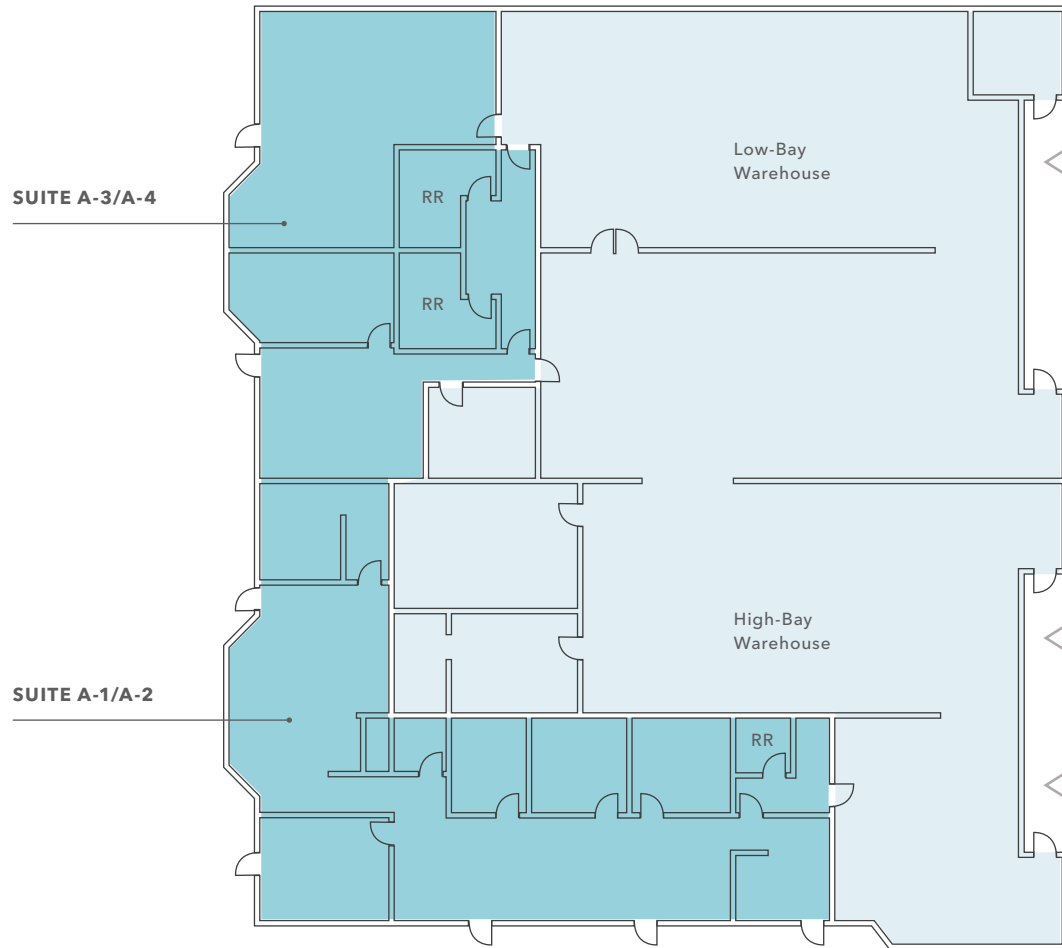
\$2.10/SF office rate

\$1.10/SF warehouse rate

\$0.44/SF NNN rate

Available now

# SUITES A-1/A-4



## LEGEND

- Office
- Warehouse
- △ Dock-High Loading

**10,734 SF**

AVAILABLE

**3,757 SF**

OFFICE

**6,977 SF**

WAREHOUSE

\*See Availabilities Overview page for totals/breakdowns for A-1/A-2 and A-3/A-4.

## PROPERTY DETAILS

10'-16' clear height

3 Dock-high loading doors

Climate-controlled warehouse

\$2.10/SF office rate

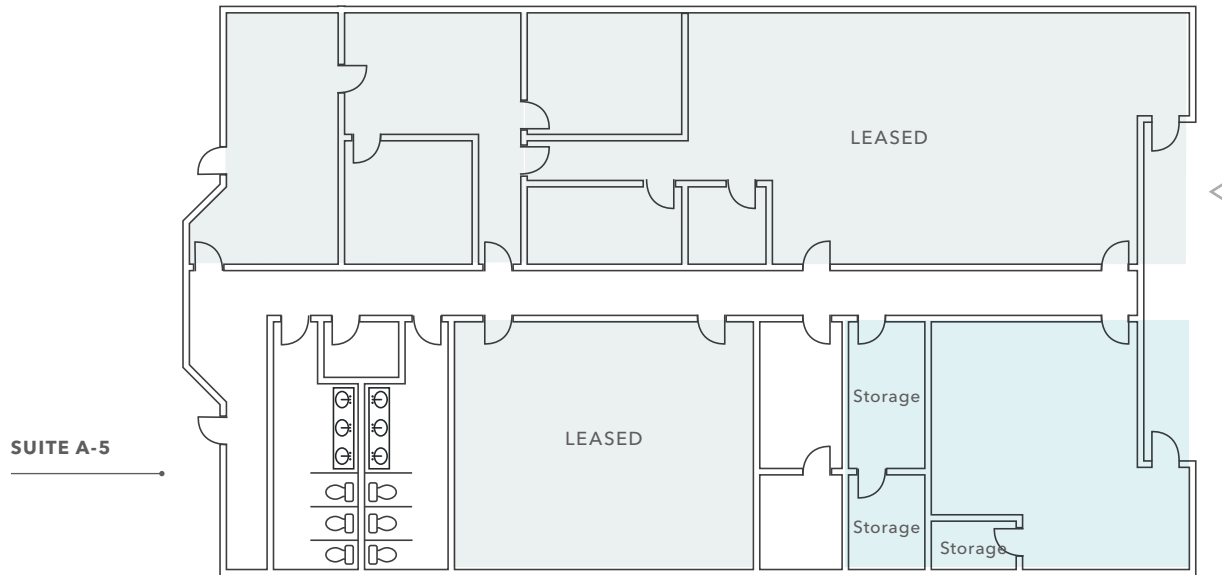
\$1.10/SF warehouse rate

\$0.44/SF NNN rate

Can be split as A-1/A-2 & A-3/A-4

Available now

# SUITE A-5



600 SF

AVAILABLE

0 SF

OFFICE

600 SF

DEAD STORAGE



## LEGEND

Office

Warehouse

△ Dock-High Loading

## PROPERTY DETAILS

Current clear height 10'-13'

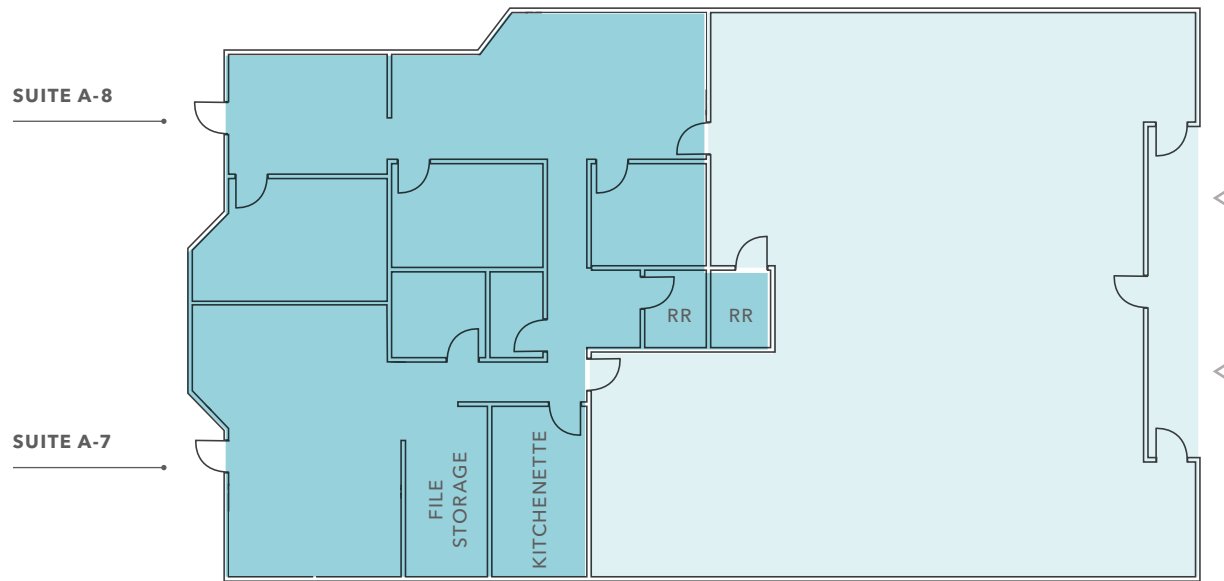
Potential clear height 16'

\$1.10/SF warehouse rate

\$0.44/SF NNN rate

Available now

## SUITES A-7/A-8



### LEGEND

- Office
- Warehouse
- △ Dock-High Loading

5,500 SF

AVAILABLE

2,475 SF

OFFICE

3,025 SF

WAREHOUSE

### PROPERTY DETAILS

Clear height 16'

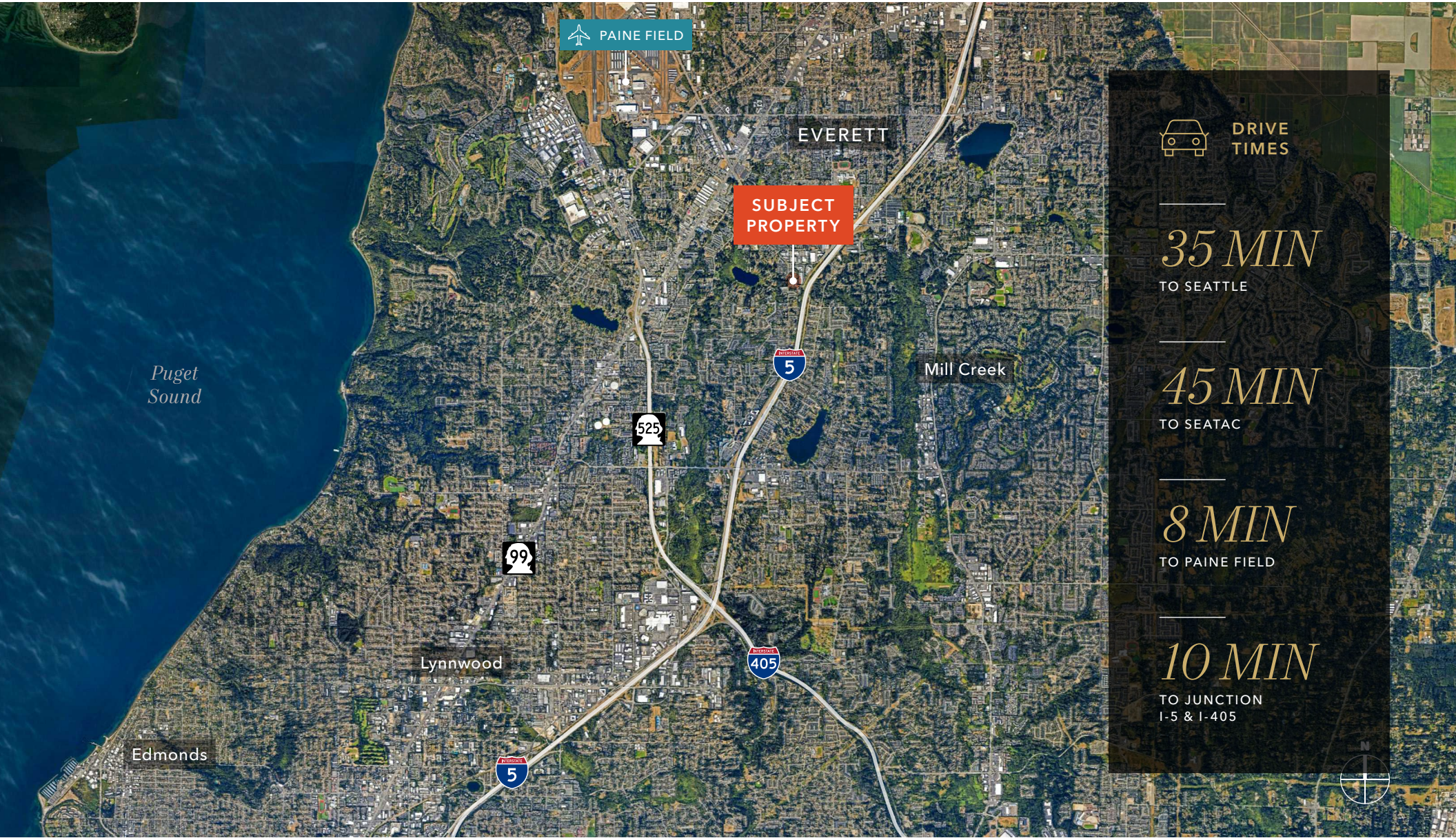
2 dock-high roll-up door

\$2.10/SF office rate

\$1.10/SF warehouse rate

\$0.44/SF NNN rate

Available now



PAINE FIELD

EVERETT

SUBJECT PROPERTY



DRIVE TIMES

35 MIN

TO SEATTLE

45 MIN

TO SEATAC

8 MIN

TO PAINE FIELD

10 MIN

TO JUNCTION  
I-5 & I-405





*Exclusively listed by*

**TODD GAUTHIER**  
Executive Vice President  
425.450.1118  
todd.gauthier@kidder.com

**JASON BLOOM**  
Executive Vice President  
425.450.1102  
jason.bloom@kidder.com

**JACK ALBRECHT**  
Associate Vice President  
425.450.1114  
jack.albrecht@kidder.com

**KIDDER.COM**