

FOR LEASE

BOTHELL 405

*A Four-Building, 152,566 SF Business
Park with Direct Access to I-405*

11711 - 11807 NORTH CREEK PKWY S, BOTHELL, WA



KIDDER.COM

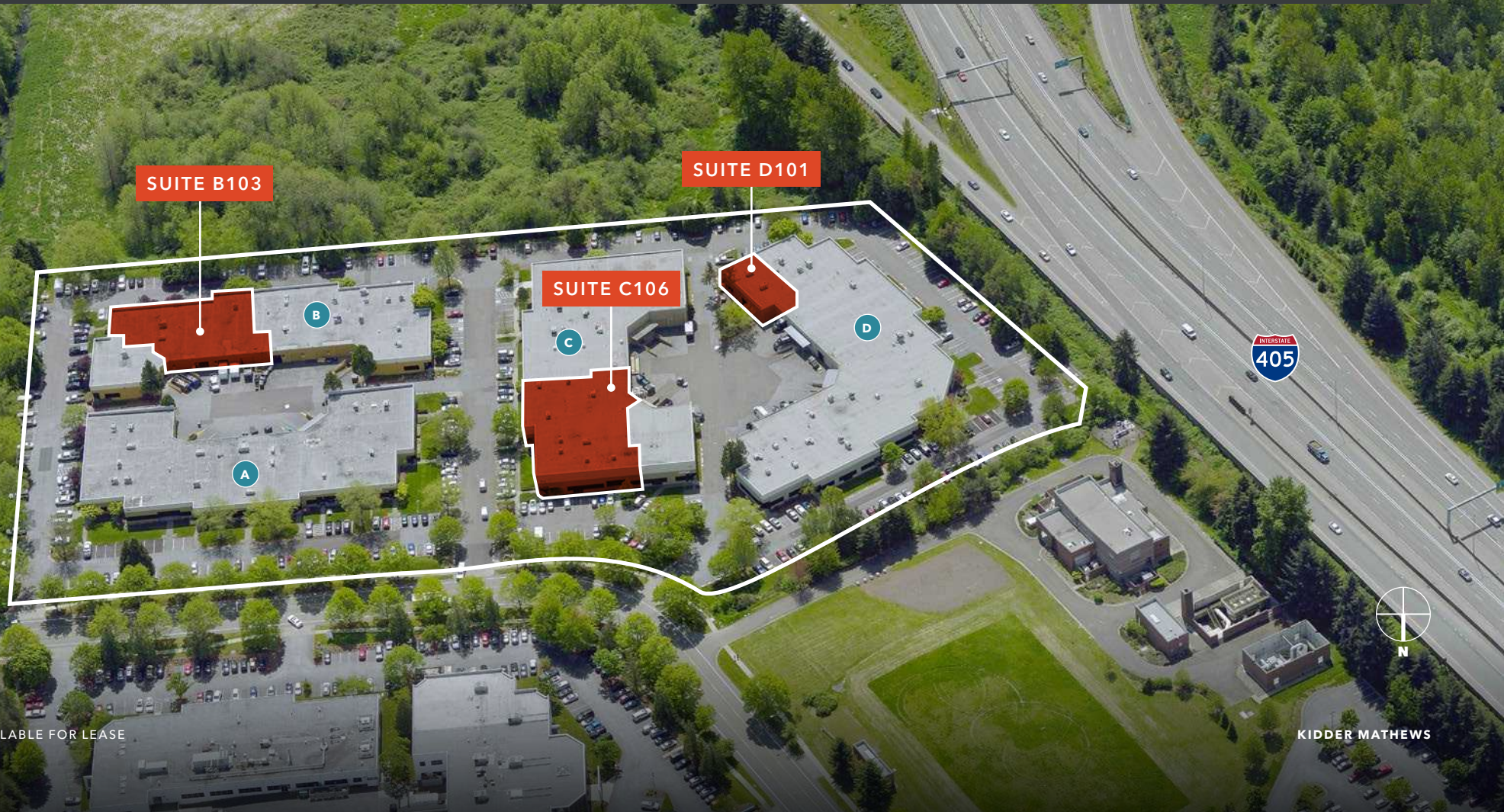
DWS

km Kidder
Mathews

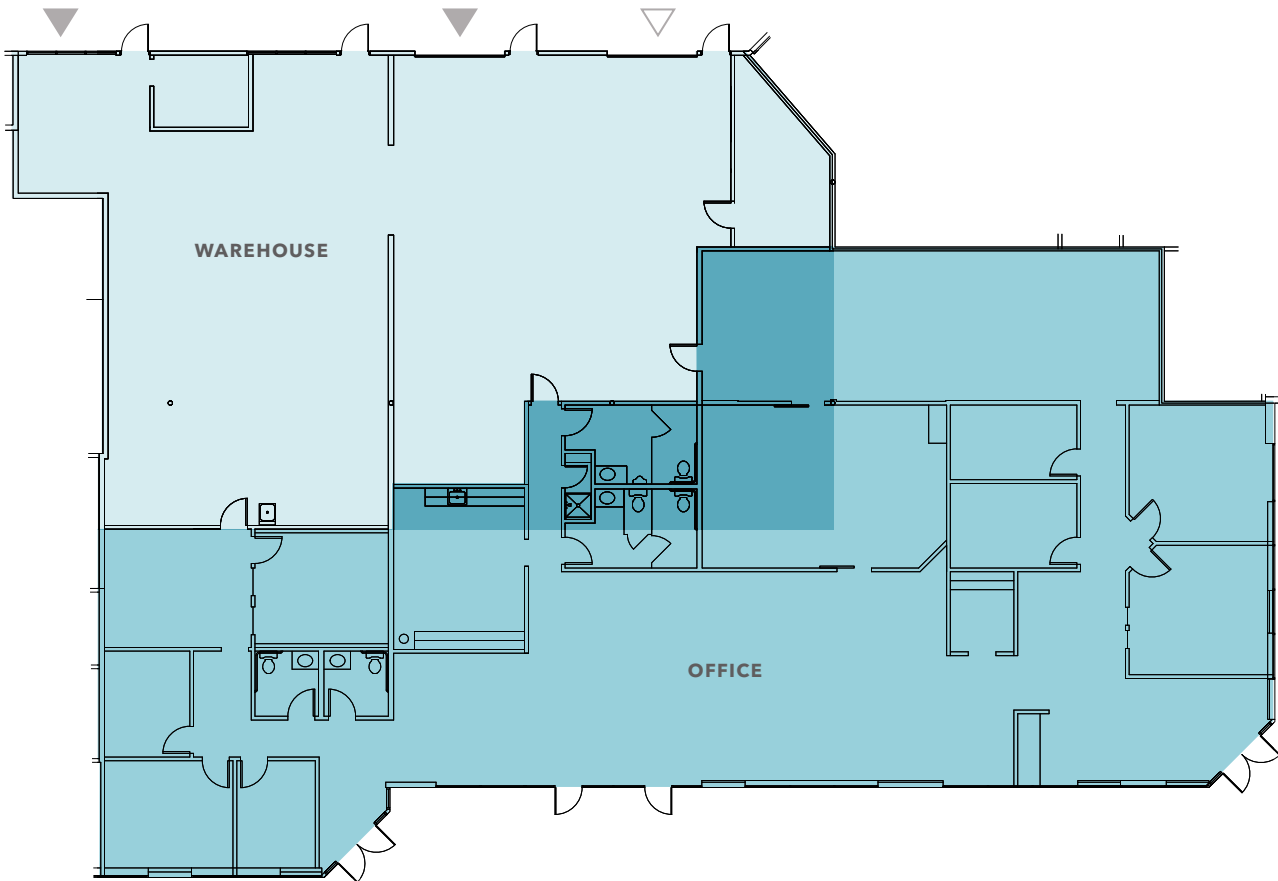
BOTHELL 405 BUSINESS PARK

SUITE AVAILABILITY

Suite	Total SF	Office SF	Warehouse SF	Office Rate/SF	Warehouse Rate/SF	NNN	Date Available
B103	9,845	6,256	3,589	\$2.35	\$1.45	\$0.53	Now
C106 (RENOVATED)	13,328	4,358	8,970	\$2.35	\$1.45	\$0.53	02/01/25 (est)
D101	2,998	2,608	390	\$2.35	\$1.45	\$0.53	Now



SUITE B103



9,845 SF

TOTAL SF

6,256 SF

OFFICE SF

3,589 SF

WAREHOUSE SF

LOADING

DOCK-HIGH & GRADE-LEVEL

NOW

AVAILABLE

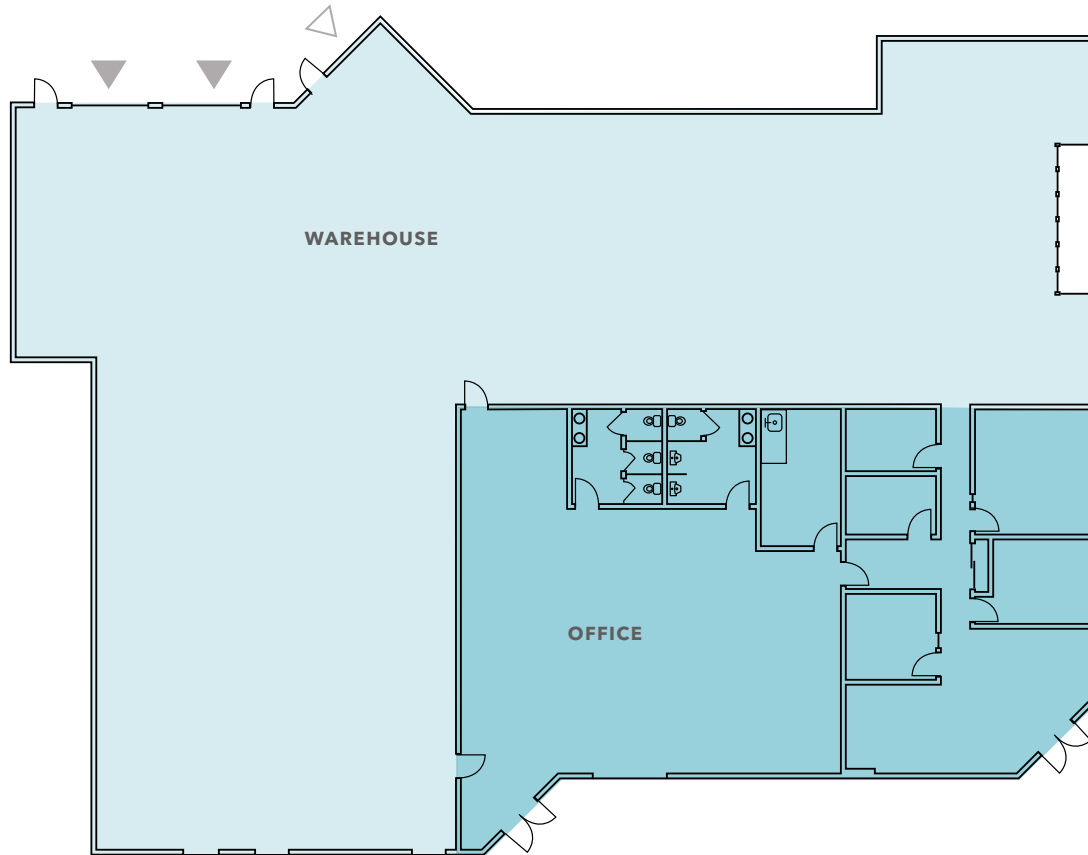


▲ Grade-level loading

△ Dock-high loading

SUITE C106

PLANNED RENOVATION



13,328 SF

TOTAL SF

4,358 SF

OFFICE SF

8,970 SF

WAREHOUSE SF

LOADING

DOCK-HIGH & GRADE-LEVEL

02/01/25

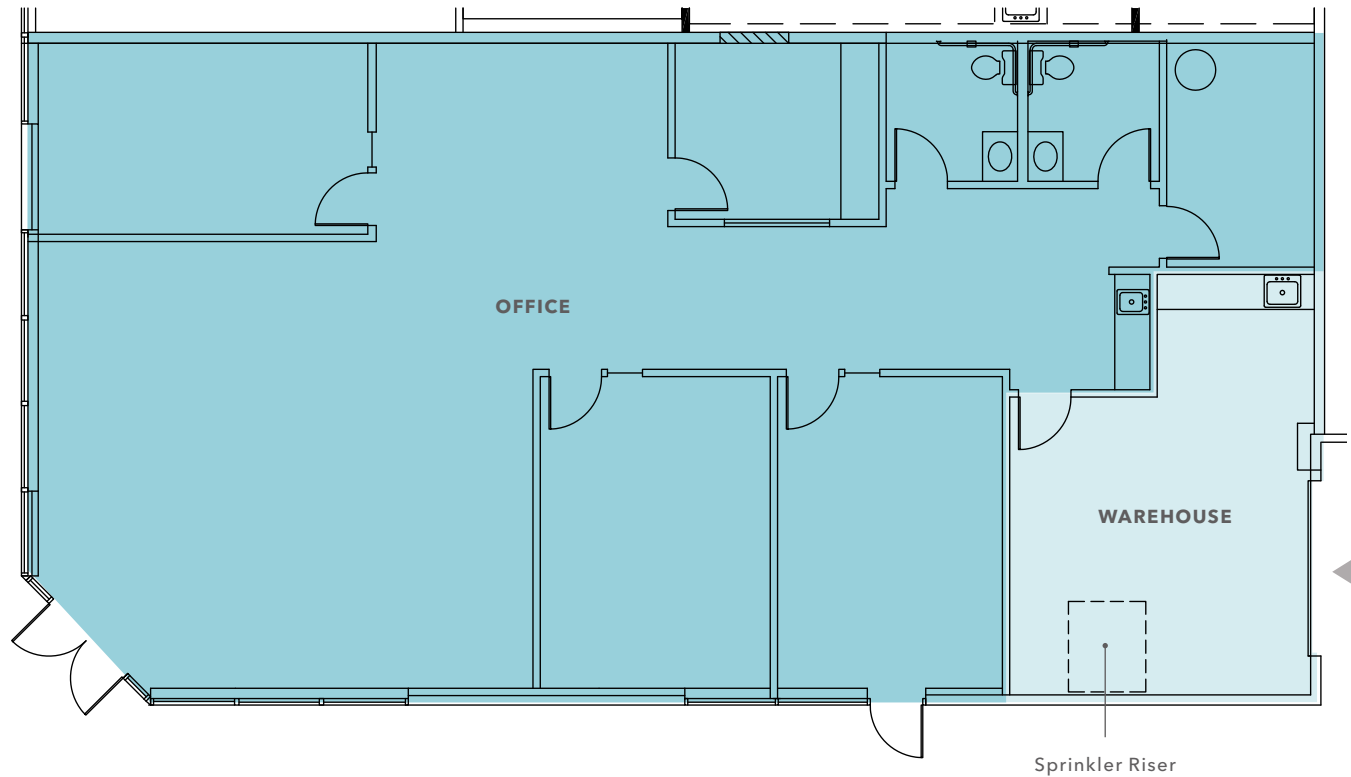
ESTIMATED DELIVERY



▲ Grade-level loading

△ Dock-high loading

SUITE D101



2,998 SF

TOTAL SF

2,608 SF

OFFICE SF

390 SF

WAREHOUSE SF

LOADING

DOCK-HIGH & GRADE-LEVEL

NOW

AVAILABLE



▲ Grade-level loading

△ Dock-high loading

BOTHELL 405 BUSINESS PARK



BOTHELL 405



BOTHELL

BEARDLEE BLVD

NE 195TH ST

N CREEK PKWY

120TH AVE NE



AVAILABLE FOR LEASE

KIDDER MATHEWS

BOTHELL 405

Exclusively listed by

TODD GAUTHIER
425.450.1118
todd.gauthier@kidder.com

JASON BLOOM
425.450.1102
jason.bloom@kidder.com

JACK ALBRECHT
425.450.1114
jack.albrecht@kidder.com

KIDDER.COM