



FOR LEASE

6900 HANNEGAN RD, LYNDEN

- SUITE INFORMATION
- INTERIOR PHOTOS
- AREA DEMOGRAPHICS


Windermere
COMMERCIAL

PRESENTED BY:

MIKE KOOY
WINDERMERE COMMERCIAL
360.739.0869
MIKEKOY@WINDERMERE.COM

FOR LEASE

6900 HANNEGAN RD, LYNDEN

Excellent access & visibility, new retail space available. 4,100 sf devisable to 924 sf. Frontage exposure at the fully signalized intersection of Hannegan and Pole Rd with traffic counts in excess of 15,000 vehicles per day. Centrally located between Lynden, Bellingham and Everson along multiple daily commuter routes. This offering is within the existing shopping/retail center including Anytime Fitness, District Brewing, Infusion Cuisine, Edward Jones Investments & others. Zoned Small Town Commercial (STC) with many uses allowed.

SUITE 101 DETAILS:

- \$24-\$36/SF/YR
- 1,368 SF

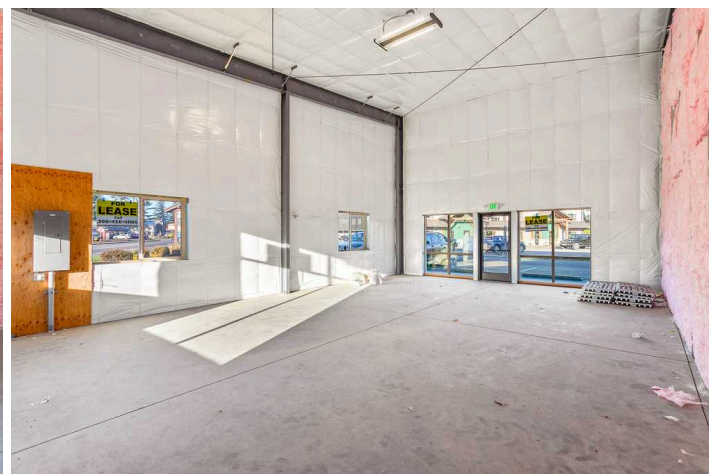
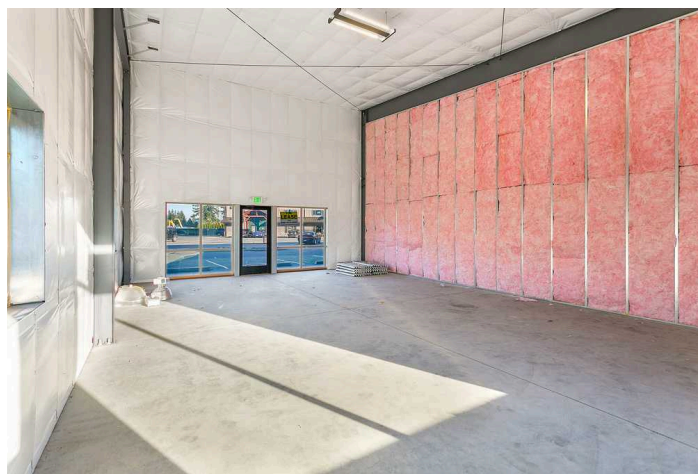
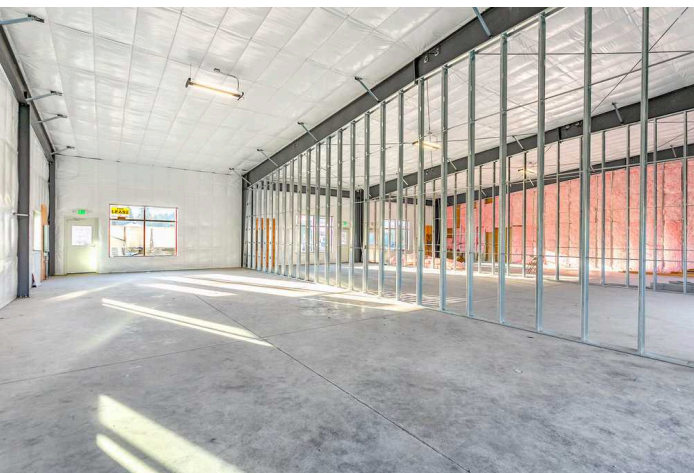
SUITE 105 DETAILS:

- \$24-\$36/SF/YR
- 924 SF



FOR LEASE

6900 HANNEGAN RD, LYNDEN



NEARBY RETAILERS



DEMOGRAPHICS

Location Facts & Demographics

Demographics are determined by a 10 minute drive from 6900 Hannegan Rd, Lynden, WA 98264

CITY, STATE

Lynden, WA

POPULATION

21,807

AVG. HHSIZE

2.76

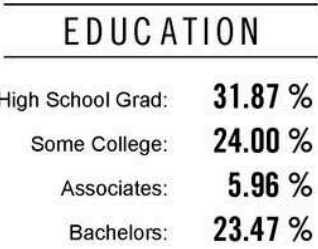
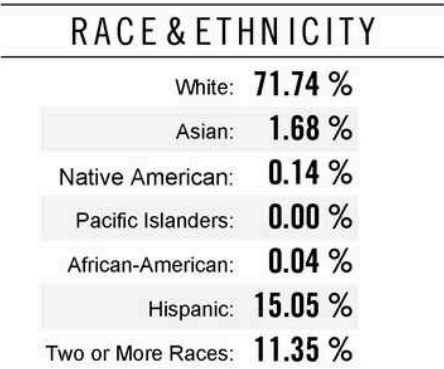
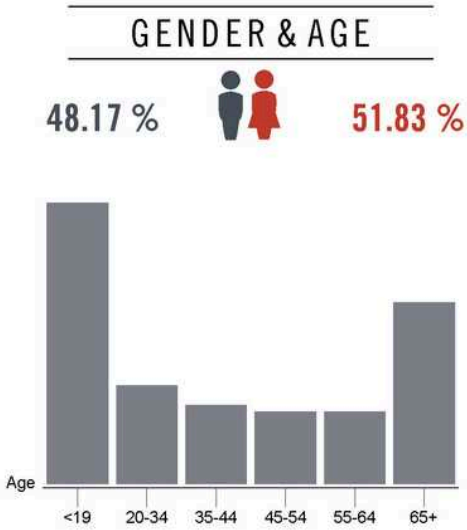
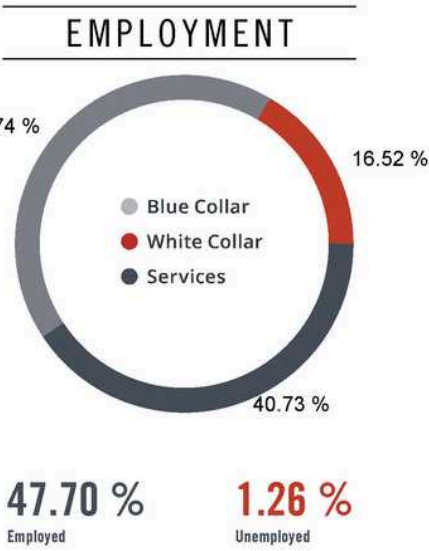
MEDIAN HH INCOME

\$56,268

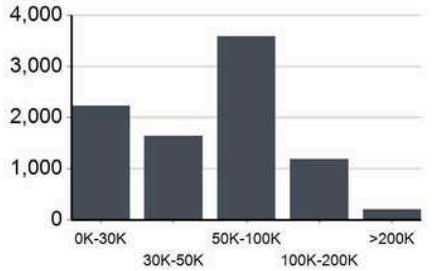
HOME OWNERSHIP

Renters: 2,181

Owners: 5,794



INCOME BY HOUSEHOLD



HH SPENDING



This information supplied herein is from sources we deem reliable. It is provided without any representation, warranty or guarantee, expressed or implied as to its accuracy. Prospective Buyer or Tenant should conduct an independent investigation and verification of all matters deemed to be material, including, but not limited to, statements of income and expenses. Consult your attorney, accountant, or other professional advisor.

LYNDEN SUMMARY

Lynden is a city in Whatcom County, Washington, United States. It is located 15 miles (24 km) north of Bellingham, the county seat and principal city of the Bellingham Metropolitan Area. It is the second largest city in Whatcom County. The city is approximately 5 miles (8.0 km) south of the Canada–U.S. border. The city is located along the Nooksack River and State Route 539. The population of Lynden was 15,749 at the 2020 census.

Lynden is home to Washington State's largest Dutch settlement, is the heart of the region's farmland, and is an area that loves to celebrate life's simpler things. Throughout the year, this community comes together to celebrate authentic festivals and events that showcase their heritage, like the Northwest Raspberry Festival and the Farmers Day Parade. The biggest event of them all is the Northwest Washington Fair that is held annually in August.

