

BUSINESS PARK SPACE AVAILABLE
ADJACENT TO PAINE FIELD AIRPORT

PAINE FIELD

BUSINESS PARK

2615 WEST CASINO ROAD
EVERETT, WASHINGTON 98204



BRODERICK
• GROUP •

CONNOR GILCHRIST
425.274.4286
gilchrist@broderickgroup.com

RAWLEY HOLMBERG
425.274.4284
holmberg@broderickgroup.com

OWNED AND MANAGED BY:


Schnitzer
PROPERTIES

PAINE FIELD

BUSINESS PARK

2615 WEST CASINO ROAD
EVERETT, WASHINGTON 98204

PROPERTY FEATURES

- High profile space catering to service companies, small businesses, sales & distribution centers
- Grade level loading
- Warehouse ceiling height: 13' to bottom of joists – 15' to bottom of roof
- Convenient South Everett location
- Across the street from Boeing 777 & 787 plant
- Direct access to SR-526 & I-5
- Restaurants and shopping center nearby

SITE PLAN



SUITE	TOTAL SF	OFFICE SF	WAREHOUSE SF	AVAILABILITY	BASE RENT	NNN	GROSS RENT
<u>1 C/D</u>	3,589 RSF	1,504 RSF	2,085 RSF	WITH 30 DAYS' NOTICE	\$5,383	\$1,364	\$6,747
<u>3 D</u>	1,829 RSF	497 RSF	1,332 RSF	NOW	\$2,744	\$695	\$3,439

PAINE FIELD

BUSINESS PARK

2615 WEST CASINO ROAD
EVERETT, WASHINGTON 98204

SUITE 1 C/D

AVAILABLE WITH 30 DAYS' NOTICE

TOTAL SF: 3,589 RSF

OFFICE SF: 1,504 RSF

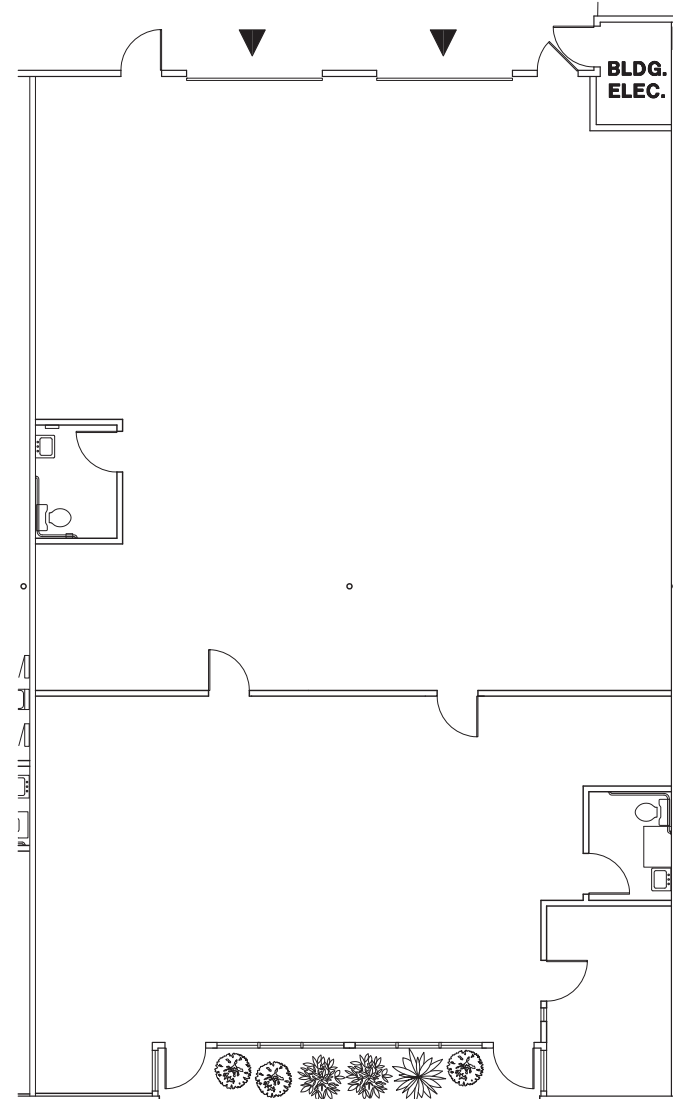
WAREHOUSE SF: 2,085 RSF

BASE RENT: \$5,383

NNN: \$1,364

GROSS RENT: \$6,747

The information contained herein has been given to us by the owner or sources that we deem reliable. We have no reason to doubt its accuracy, but we do not guarantee it. Prospective tenants should carefully verify all information contained herein.



[↑ BACK TO AVAILABLE SPACE](#)

BRODERICK
GROUP

CONNOR GILCHRIST
425.274.4286
gilchrist@broderickgroup.com

RAWLEY HOLMBERG
425.274.4284
holmberg@broderickgroup.com

OWNED AND MANAGED BY:

Schnitzer
PROPERTIES

PAINE FIELD

BUSINESS PARK

2615 WEST CASINO ROAD
EVERETT, WASHINGTON 98204

SUITE 3 D

AVAILABLE NOW

TOTAL SF: 1,829 RSF

OFFICE SF: 497 RSF

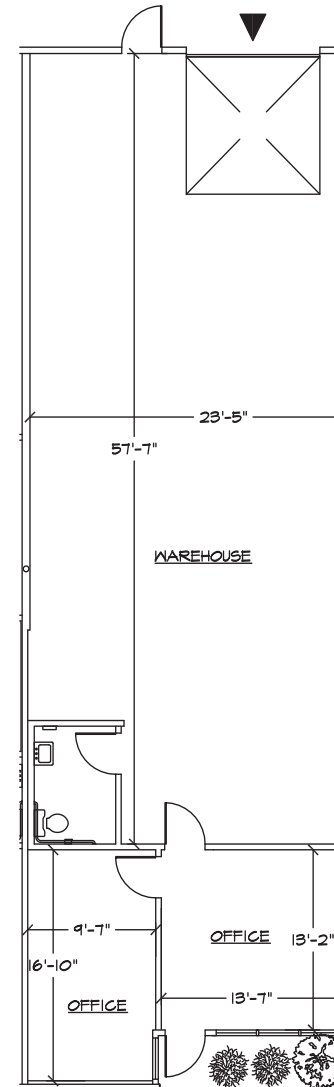
WAREHOUSE SF: 1,332 RSF

BASE RENT: \$2,744

NNN: \$695

GROSS RENT: \$3,439

The information contained herein has been given to us by the owner or sources that we deem reliable. We have no reason to doubt its accuracy, but we do not guarantee it. Prospective tenants should carefully verify all information contained herein.



[↑ BACK TO AVAILABLE SPACE](#)



CONNOR GILCHRIST
425.274.4286
gilchrist@broderickgroup.com

RAWLEY HOLMBERG
425.274.4284
holmberg@broderickgroup.com

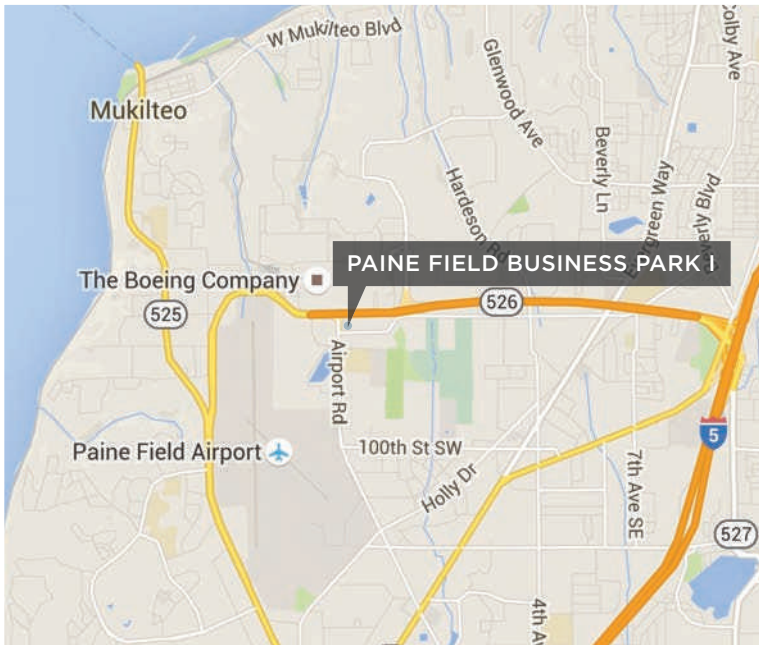
OWNED AND MANAGED BY:



PAINE FIELD

BUSINESS PARK

2615 WEST CASINO ROAD
EVERETT, WASHINGTON 98204



BRODERICK
• GROUP •

CONNOR GILCHRIST
425.274.4286
gilchrist@broderickgroup.com

RAWLEY HOLMBERG
425.274.4284
holmberg@broderickgroup.com

OWNED AND MANAGED BY:


Schnitzer
PROPERTIES

PAINE FIELD BUSINESS PARK

2615 WEST CASINO ROAD
EVERETT, WASHINGTON 98204

PUGET SOUND

PAINE FIELD BUSINESS PARK I



- 1 Happy Tummy Grill
- 2 Goodwill
- 3 USPS
- 4 Fred Meyer
- 5 Public Storage
- 6 Buzz Inn Steakhouse

- 7 IHOP
- 8 FedEx
- 9 Outback Steakhouse
- 10 Office Depot
- 11 BECU
- 12 McDonald's

- 13 Panera Bread
- 14 Starbucks
- 15 Target
- 16 V Star Buffet
- 17 Trader Joe's
- 18 Applebee's

- 19 UPS
- 20 Arby's
- 21 T.J. Maxx
- 22 Best Buy
- 23 Petco
- 24 Kyoto Japanese Steakhouse

- 25 Michaels
- 26 Walmart
- 27 Everett Mall
- 28 LA Fitness
- 29 Wells Fargo Bank
- 30 Ross

- 31 Taco Bell
- 32 Memo's Mexican
- 33 Popeye's
- 34 Walgreens
- 35 Albertson's
- 36 Dairy Queen



CONNOR GILCHRIST
425.274.4286
gilchrist@broderickgroup.com

RAWLEY HOLMBERG
425.274.4284
holmberg@broderickgroup.com

OWNED AND MANAGED BY:

