

SPACE FOR LEASE
2,875 SF

CATERING/EVENT, KITCHEN,
RESTAURANT/LOUNGE

5130 Ballard Ave NW, Seattle, WA 98107

AVAILABLE
JUNE 1, 2025



For more information please contact:

LAURA MILLER
laura@gibraltarusa.com
206.351.3573

SAM BENTON
samb@gibraltarusa.com
312.550.8825



5130 BALLARD AVE NW, SEATTLE, WA 98107

CATERING / EVENT, PRODUCTION KITCHEN, RESTAURANT / LOUNGE

THE OPPORTUNITY

- Rare opportunity to lease one-of-a-kind production/catering kitchen in the heart of Ballard with a PRIME corner location on Ballard Avenue
- Character filled classic brick building features a vibrant light-filled space with expansive windows, reclaimed wood accents, high ceilings and HVAC,
- Kitchen features 23' 7" hooded cooking line, 14'x7'x20" Walk-in Refrigerator/Freezer, 18' Type 1 hood, 5' 7" self-cleaning Type 1 hood for wood fired equipment.
- Full equipment list available upon request
- Four (4) secure parking stalls at fair market rent
- Building Co-tenant is Good & Well Supply Co.
- Surrounding neighborhood businesses include C.C. Filson, Situ Tacos, Sabine Cafe & Bar, The Ballard Cut, San Fermo, Hotel Ballard, The Walrus and the Carpenter
- Available June 1, 2025
- 2,875 SF
- Monthly Rent \$8,834.31 plus 2024 NNN (\$2,956.04) = \$11,790.35. Long term lease available



5130 BALLARD AVE NW, SEATTLE, WA 98107

CATERING / EVENT, PRODUCTION KITCHEN, RESTAURANT / LOUNGE



53

TRANSIT SCORE



95

WALK SCORE



97

BIKE SCORE



28,577

POPULATION



15,125

HOUSEHOLDS

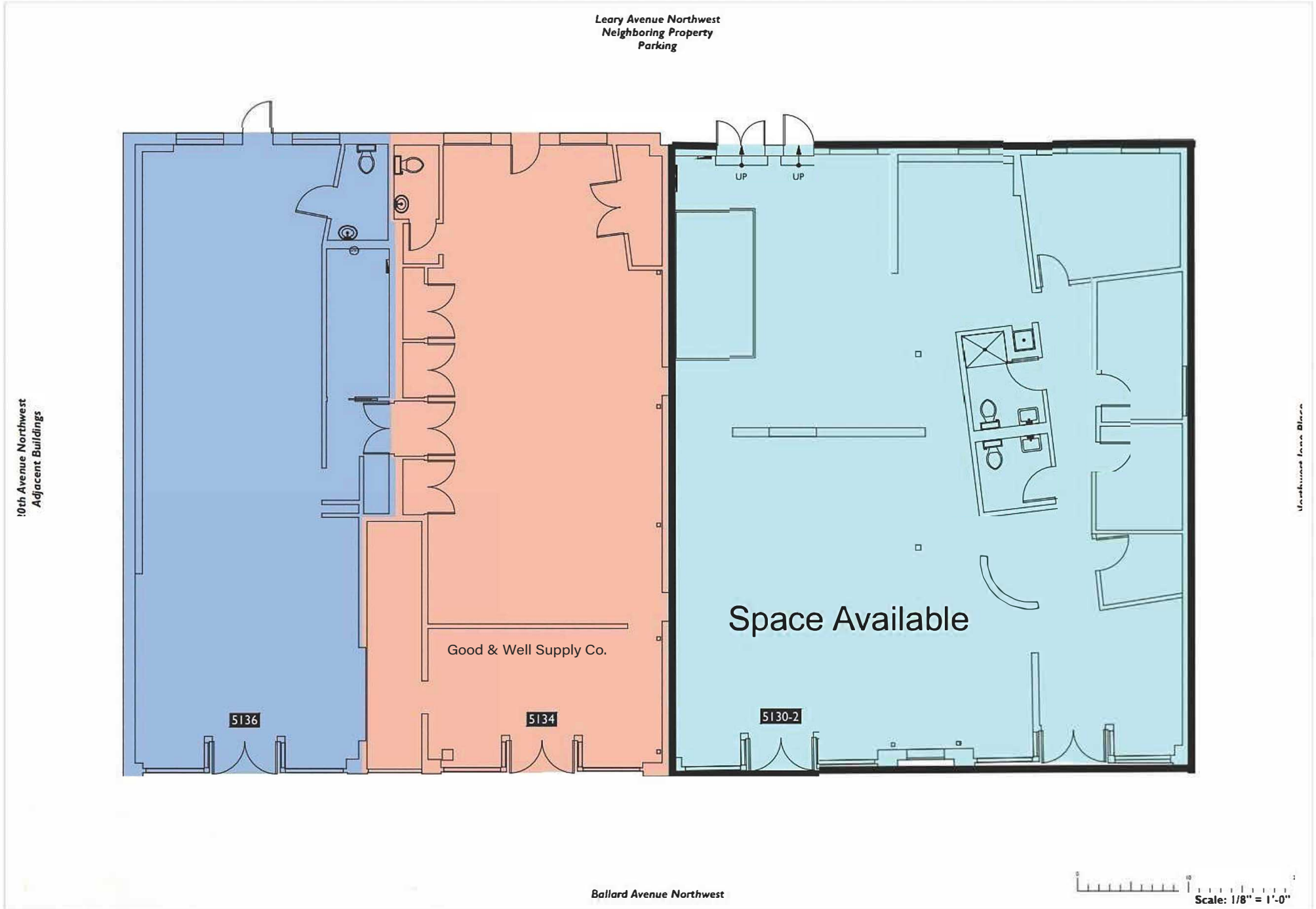


131,599

HOUSEHOLD INCOME

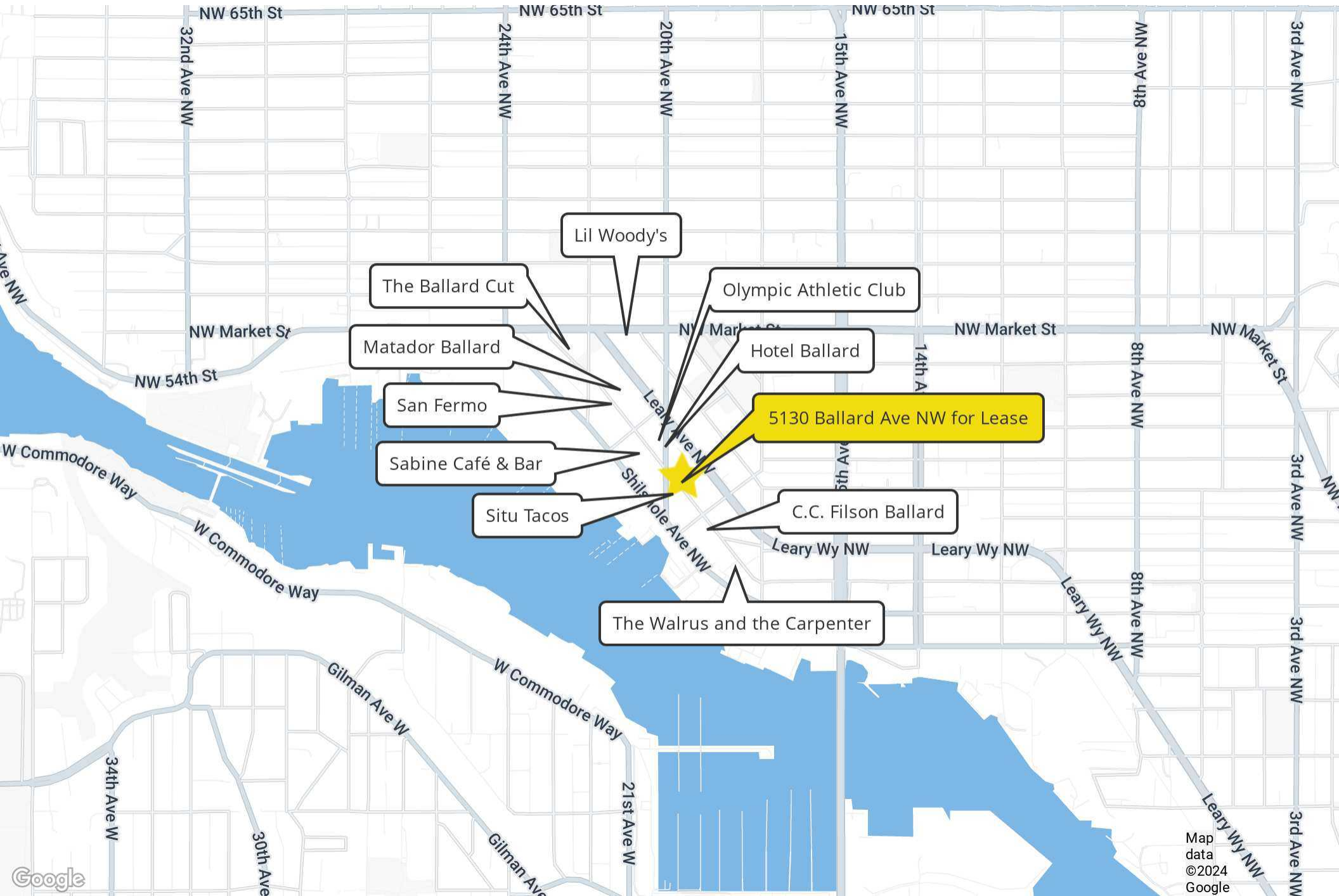
5130 BALLARD AVE NW, SEATTLE, WA 98107

CATERING / EVENT, PRODUCTION KITCHEN, RESTAURANT / LOUNGE



5130 BALLARD AVE NW, SEATTLE WA 98107

CATERING / EVENT, PRODUCTION KITCHEN, RESTAURANT / LOUNGE



Lil Woody's

The Ballard Cut

Olympic Athletic Club

Matador Ballard

Hotel Ballard

San Fermo

5130 Ballard Ave NW for Lease

Sabine Café & Bar

Situ Tacos

C.C. Filson Ballard

The Walrus and the Carpenter

Map data ©2024 Google