

NORTH CREEK COMMERCE CENTER

Walls tilted on ALL Buildings!
Shell Completion Scheduled
for April 2025

18712 BOTHELL-EVERETT HWY, BOTHELL, WA

[VIEW DRONE VIDEO](#)

DEVELOPED BY

 PANATTONI®

REPRESENTED BY

 JSH | PROPERTIES, INC.

 **Kidder
Mathews**



North Creek Commerce Center is a 240,601 SF, class-A flex/industrial park with direct access to Bothell-Everett Highway.

Delivery Q1 2025

2.7 stalls / 1,000 SF parking ratio

32' clear height

Dock- & grade-level loading

130' dedicated truck court

Heavy power

Easy access to I-405 and I-5

Call agents for lease rates

Perfectly connected with easy access to major freeways and interstate highways

2.5 MI
TO I-405

3.4 MI
TO I-5

4.7 MI
TO SR-9

MUKILTEO



PAINE FIELD AIRPORT



8 MIN TO I-5

NORTH CREEK COMMERCE CTR

9 MIN TO SR-9



MONROE



LYNNWOOD

6 MIN TO I-405



MALTBY



BOTHELL

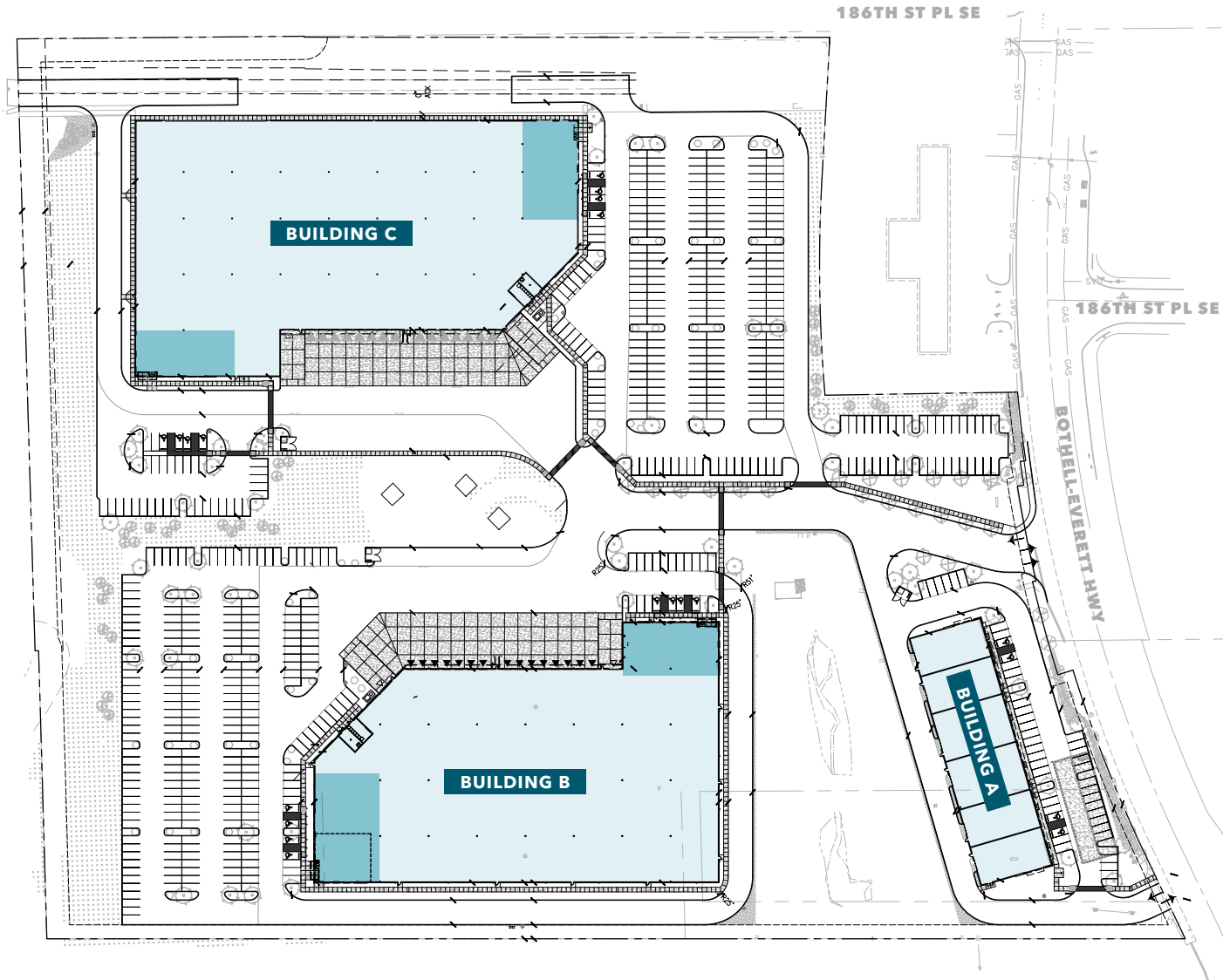
WOODINVILLE

SHORELINE

KIRKLAND



SITE PLAN



▲ DRIVE-IN DOORS

△ DOCK-HIGH DOORS



BUILDING C

68,520

REMAINING SF
(INCLUDES 3,000 SF OF
2ND STORY OFFICE)

BTS

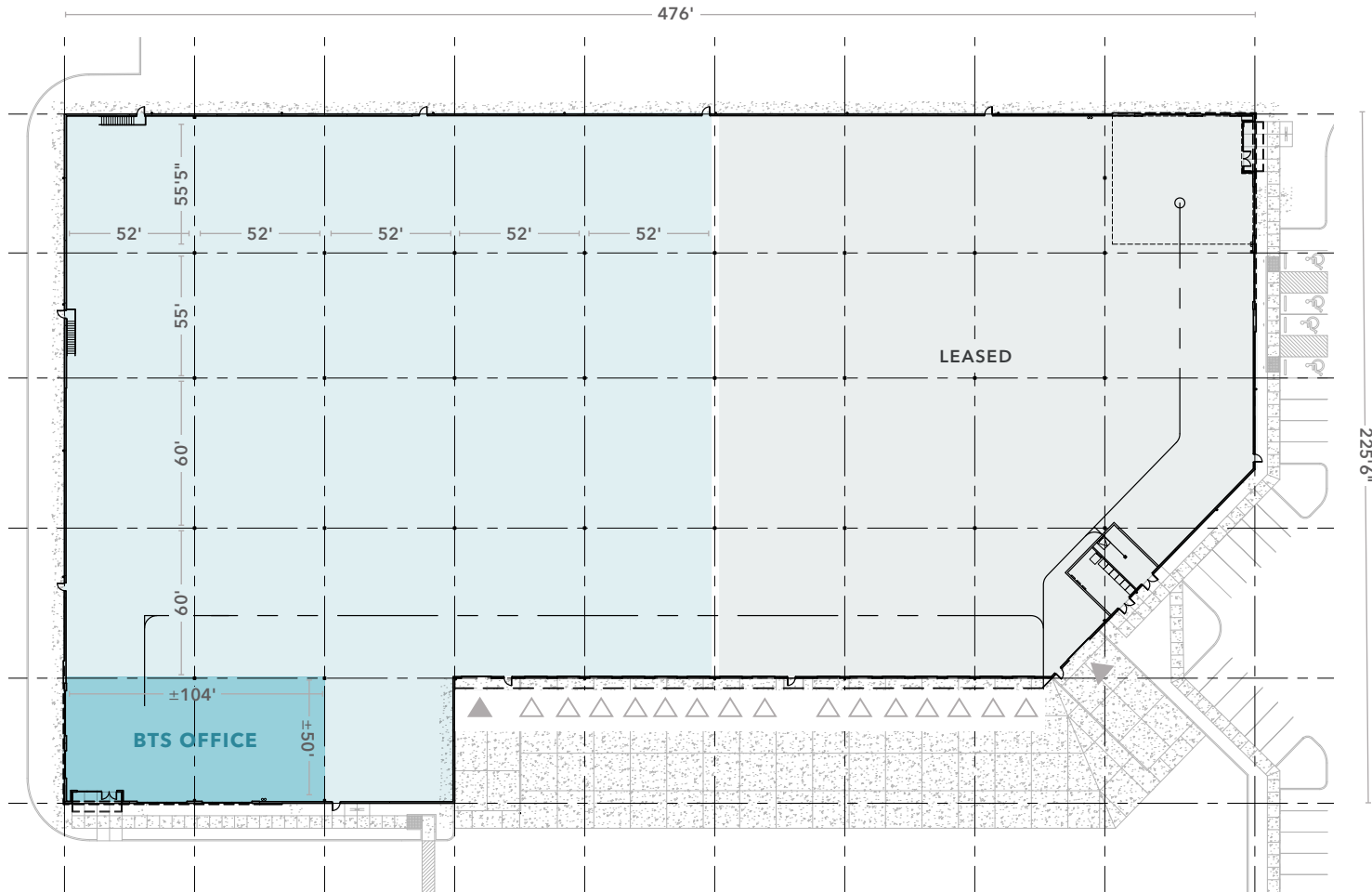
OFFICE SPACE

6

DOCK-HIGH
DOORS

1

GRADE-LEVEL
DOOR



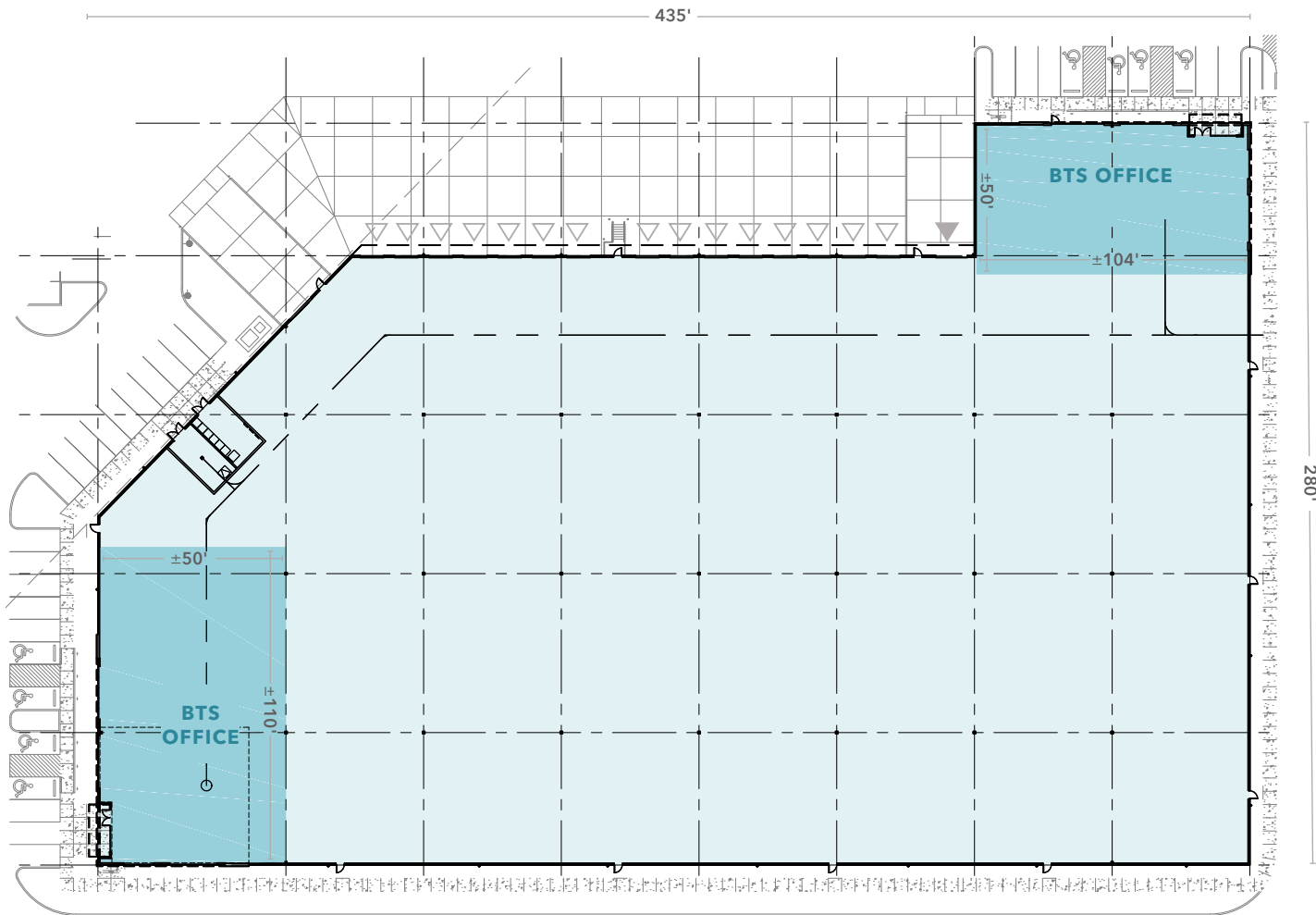
▲ DRIVE-IN DOORS △ DOCK-HIGH DOORS ■ WAREHOUSE ■ OFFICE



BUILDING B

104,610
TOTAL SF

BTS
OFFICE SPACE



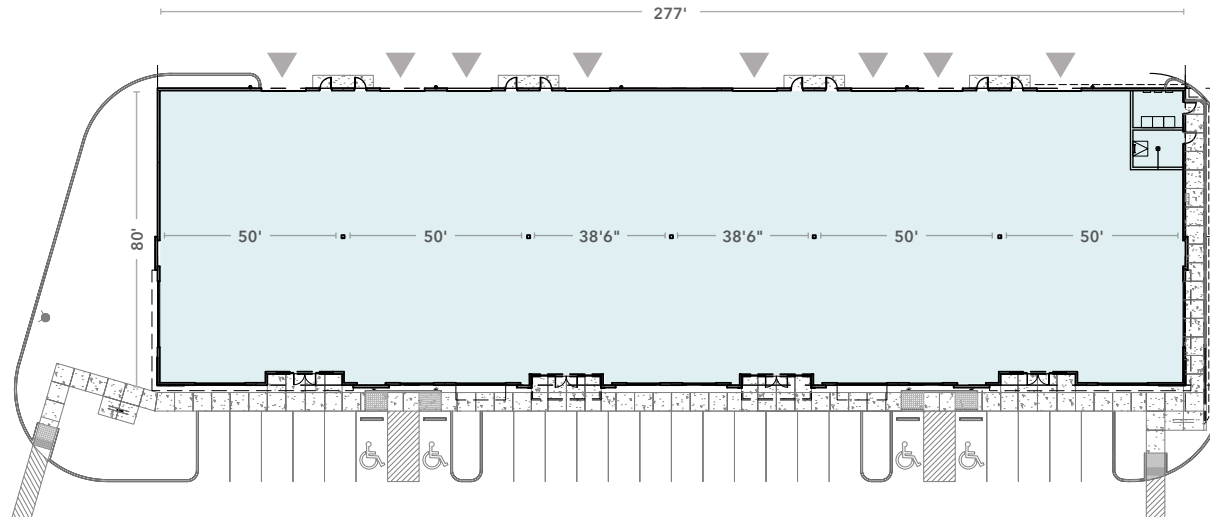
▲ DRIVE-IN DOORS ▽ DOCK-HIGH DOORS ■ WAREHOUSE ■ OFFICE



BUILDING A

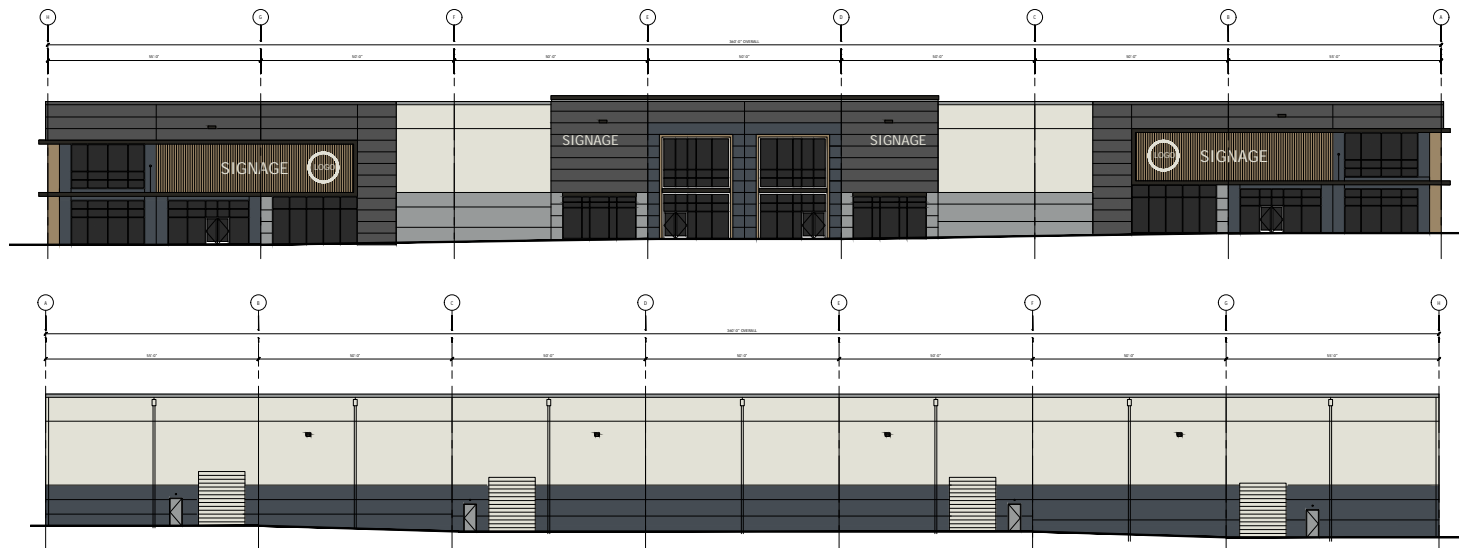
22,971

TOTAL SF



▲ DRIVE-IN DOORS

Elevations



NORTH CREEK COMMERCE CENTER

NORTHCREEKCOMMERCE.COM



For leasing information contact

ZACH VALL-SPINOSA

Kidder Mathews
425.450.1115
zach.vallspinosa@kidder.com

ERNIE VELTON

JSH Properties
425.283.5471
erniev@jshproperties.com

REESE VELTON

JSH Properties
425.283.5484
reesev@jshproperties.com

DEVELOPED BY

 PANATTONI®

REPRESENTED BY

 JSH | PROPERTIES, INC.

 **Kidder
Mathews**

This information supplied herein is from sources we deem reliable. It is provided without any representation, warranty, or guarantee, expressed or implied as to its accuracy. Prospective Buyer or Tenant should conduct an independent investigation and verification of all matters deemed to be material, including, but not limited to, statements of income and expenses. Consult your attorney, accountant, or other professional advisor.