



# SPACE FOR LEASE

## GARDEN COURT OFFICE SUITES

Total Building Size: ± 17,300 SF  
Available Space: ± 276 SF up to ± 2,093 SF  
Lease Rate: \$16.00 PSF  
Building Conference Room  
Building Breakroom  
Free Parking (4/1,000)

## AVAILABLE SPACE

| SUITE # | SPACE SIZE  | MONTHLY RENT    | AVAILABILITY |
|---------|-------------|-----------------|--------------|
| 30      | ± 2,093 RSF | \$2,791 / Month | NOW          |
| 224     | ± 1,448 RSF | \$1,810 / Month | NOW          |
| 230     | ± 552 RSF   | \$736 / Month   | NOW          |
| 250     | ± 907 RSF   | \$1,209 / Month | NOW          |



Office space leased here helps support Hutton Settlement Children's Home, a historic not-for-profit organization dedicated to providing a safe and loving home for children.

[www.huttonsettlement.org](http://www.huttonsettlement.org)

[KIEMLEHAGOOD.COM](http://KIEMLEHAGOOD.COM)

## Garden Court Building

222 W. Mission Avenue  
Spokane, WA 99201

View  
Location



**CHRISTIAN ALFARO, BROKER**

509.755.7505 [christian.alfaro@kiemlehagood.com](mailto:christian.alfaro@kiemlehagood.com)

**TONY KING, PROPERTY MANAGER**

509.755.7517 [tony.king@kiemlehagood.com](mailto:tony.king@kiemlehagood.com)

**KIEMLE  
HAGOOD**

# FLOOR PLANS

## SUITE 30

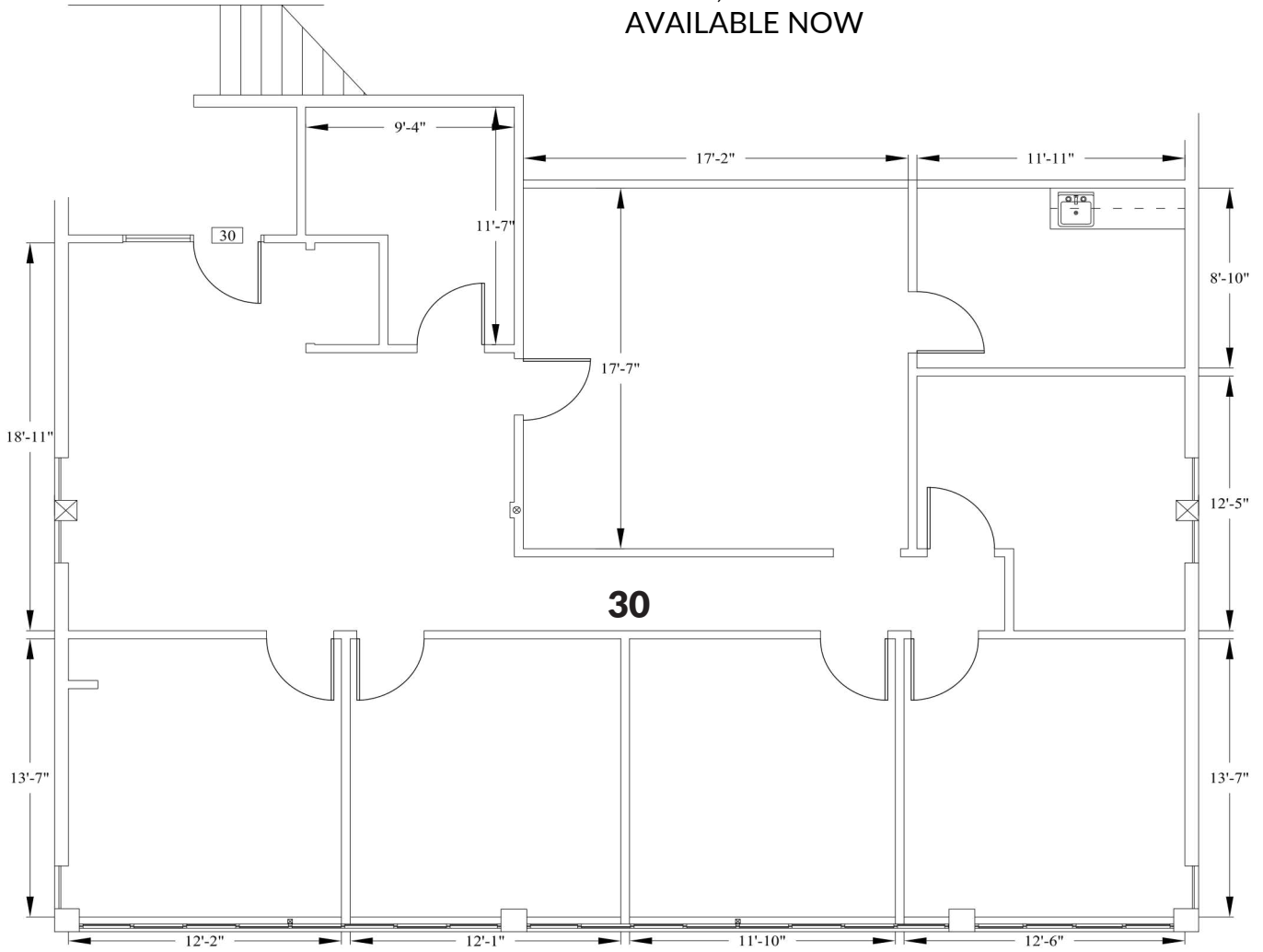
Price:

\$2,791 / Month

Space Size:

± 2,093 SF

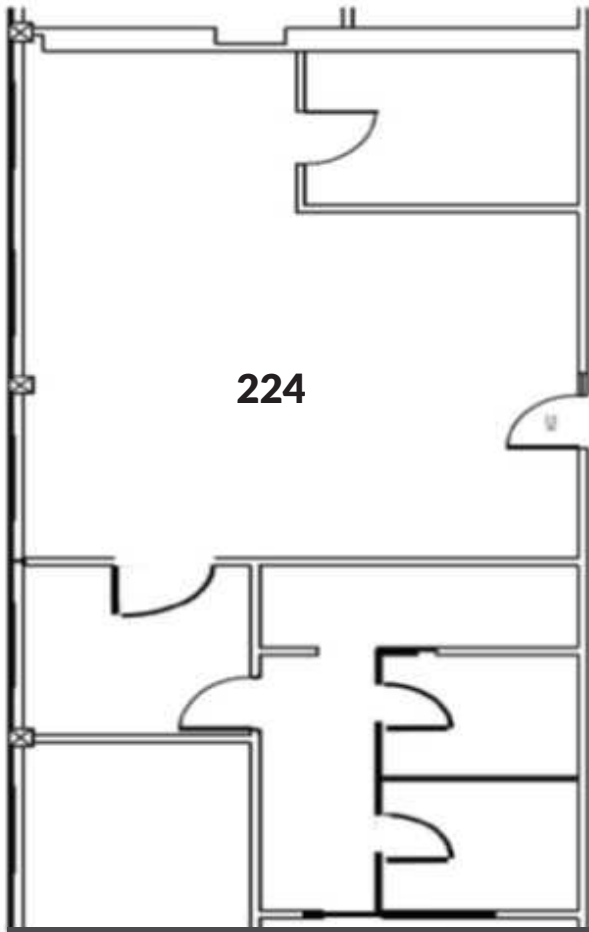
AVAILABLE NOW



# FLOOR PLANS

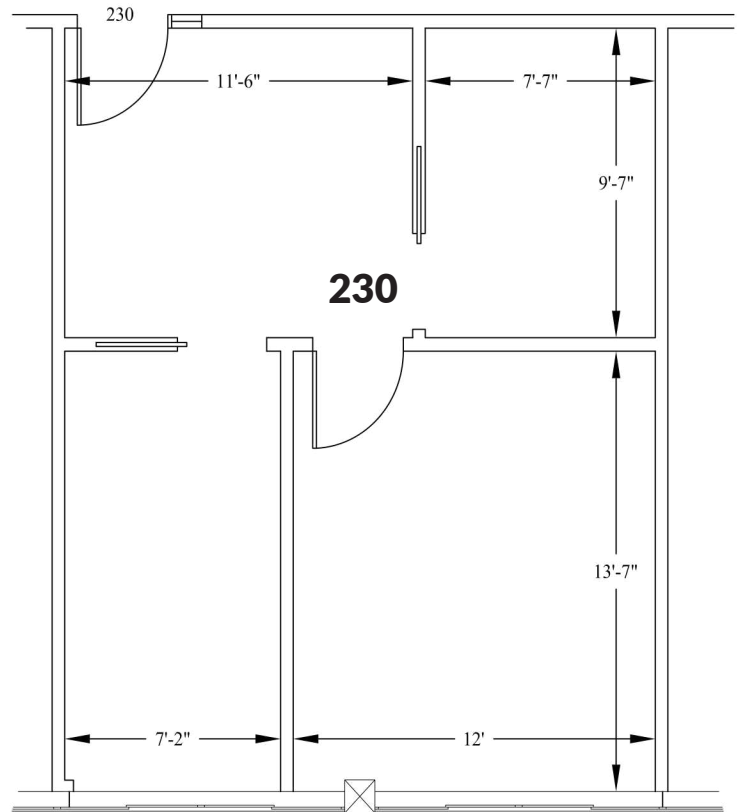
## SUITE 224

Price:  
\$1,810 / Month  
Space Size:  
± 1,448 SF  
AVAILABLE NOW



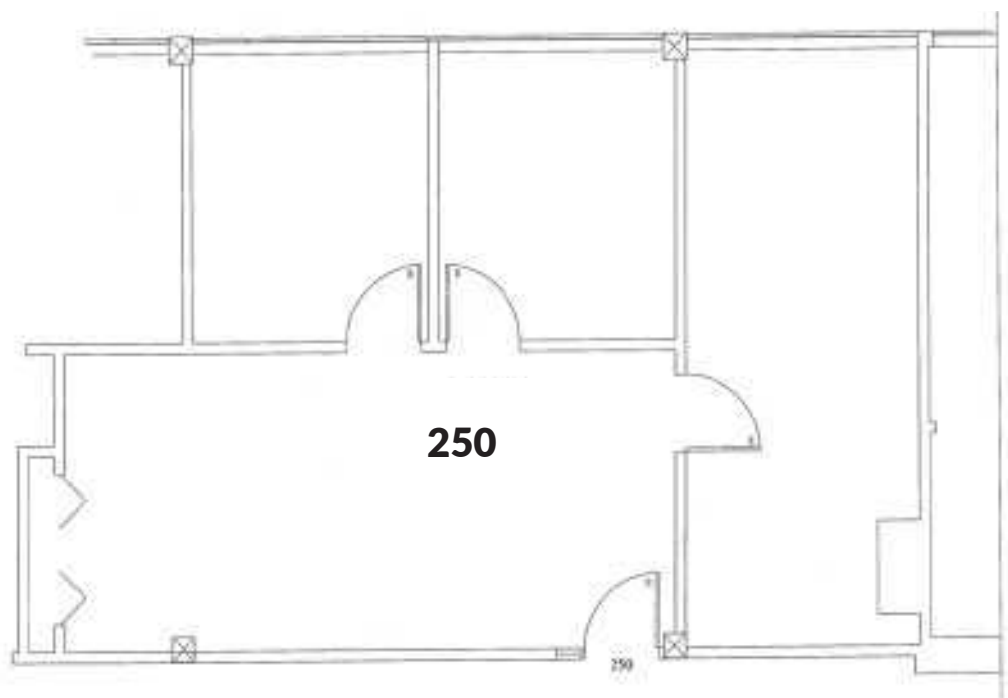
## SUITE 230

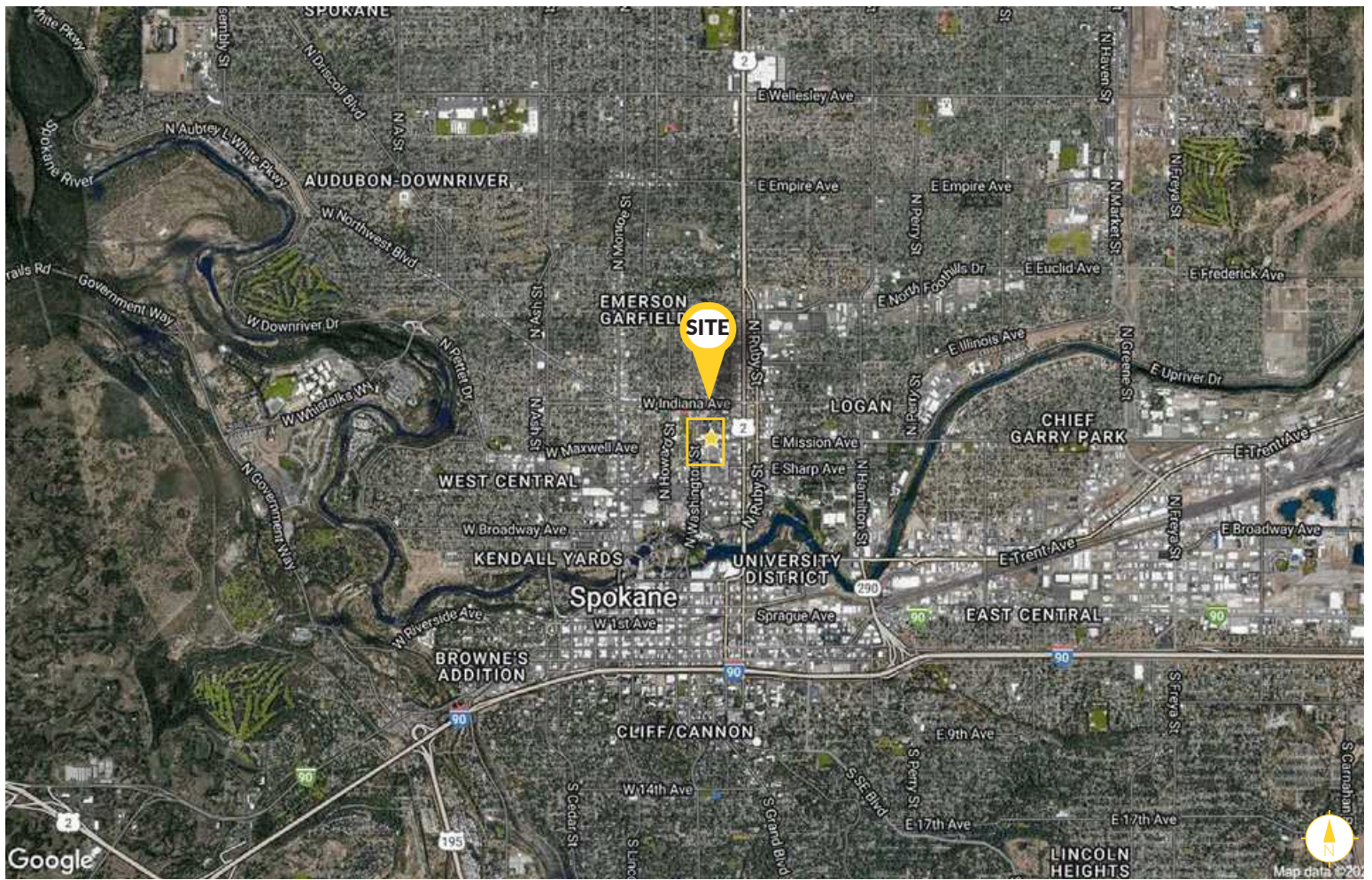
Price:  
\$736 / Month  
Space Size:  
± 552 SF  
AVAILABLE NOW



## SUITE 250

Price:  
\$1,209 / Month  
Space Size:  
± 907 SF  
AVAILABLE NOW





# GARDEN COURT BUILDING

222 W Mission Avenue  
Spokane, WA 99201

## CHRISTIAN ALFARO, BROKER

509.755.7505 christian.alfaro@kiemleahagood.com

## TONY KING, PROPERTY MANAGER

509.755.7517 tony.king@kiemleahagood.com

601 WEST MAIN AVENUE, SUITE 400  
SPOKANE, WA 99201



### OFFICE LOCATIONS

SPOKANE | COEUR D'ALENE | TRI-CITIES | PALOUSE | MISSOULA

No warranty or representation, expressed or implied, is made by Kiemle Hagood, its agents or its employees as to the accuracy of the information contained herein. All information furnished is from sources deemed reliable and submitted subject to errors, omissions, change of terms and conditions, prior sale, lease or financing, or withdrawal without notice. No one should rely solely on the above information, but instead should conduct their own investigation to independently satisfy themselves.

Kiemle Hagood respects the intellectual property of others:

If you believe the copyright in your work has been violated through this Website, please contact our office for notice of claims of copyright infringement. For your complaint to be valid under the Digital Millennium Copyright Act of 1998 (DMCA), you must provide the following information when providing notice of the claimed copyright infringement: Identify the material on the Website that you believe infringes your work, with enough detail so that we may locate it on the Website; provide your address, telephone number and email address; provide a statement that you have a good faith belief that the disputed use is not authorized by the copyright owner, its agent, or the law; provide a statement that the information in the notification is accurate, and under penalty of perjury, that the complaining party is authorized to act on behalf of the owner of an exclusive right that is allegedly infringed; and provide your physical or electronic signature. Upon receiving your complaint, Kiemle Hagood will, upon review, remove content that you believe infringes your copyright if the complaint is found to be valid.