

# DPI EAST PARK

4520 B St NW, Suite D, Auburn, WA

Available Now

Manufacturing/Distribution Space

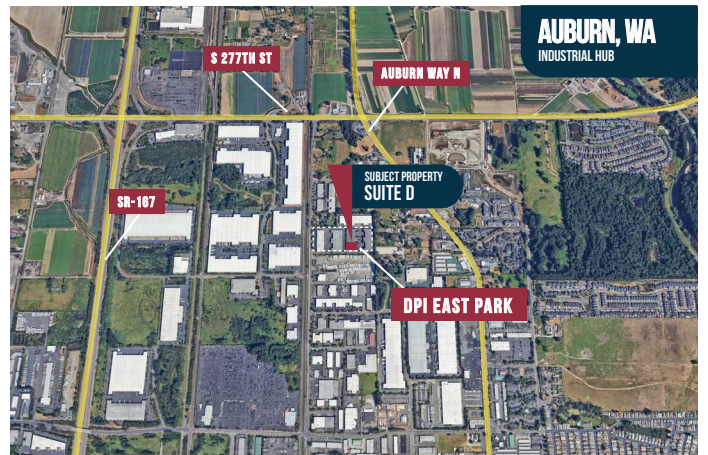


## Property Specifications

- 15,799 SF Shell
- 1,008 SF Office
- 4 dock-high doors
- 2 oversize grade-level doors (12'x16')
- 24' clear height
- 300 amps 277/480v 3-phase power
- Call for rates

## Property Features

- Excellent location with access to B St, & SR-167/I-5 via 277th in Auburn



Owned & Operated by:

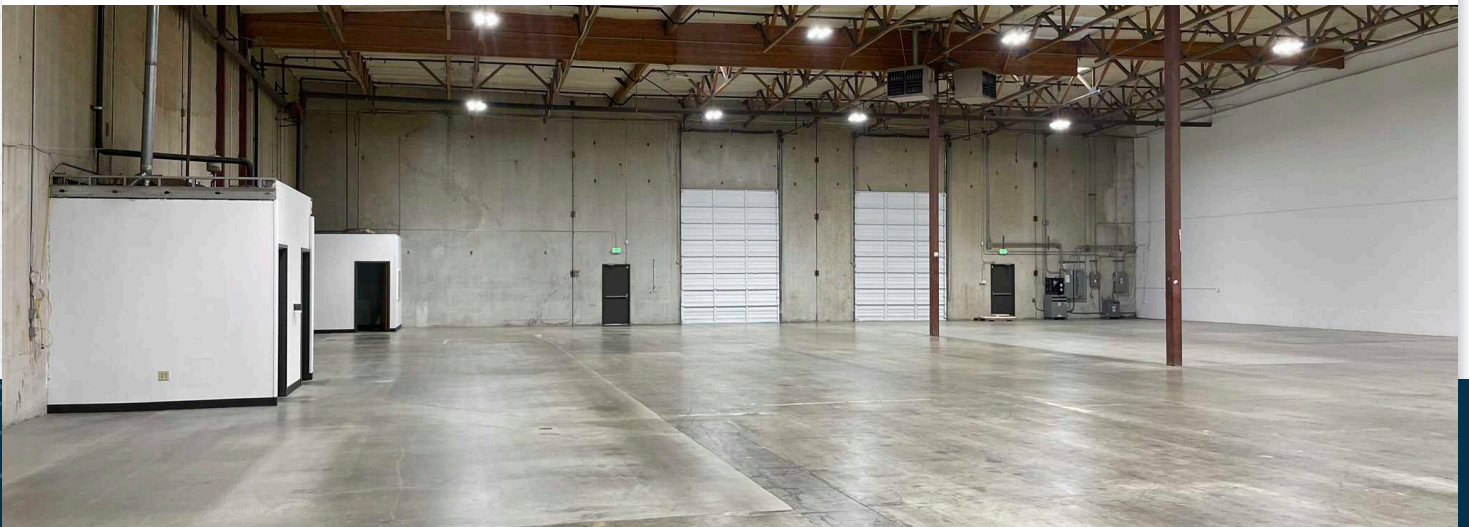


Leasing by:



[dpillc.com](http://dpillc.com)

# DPI EAST PARK



Contact Kidder Mathews for more info:

Travis Stanaway

206-248-6526

travis.stanaway@kidder.com

Matt Murray

206-248-6541

matt.murray@kidder.com

Dane Dahline

206-248-6519

dane.dahline@kidder.com

Lisa Rowe

206-777-5122

lisar@davispropertiesllc.com

The information provided in this document should be independently verified on any material matter represented herein.

Owned & Operated by:

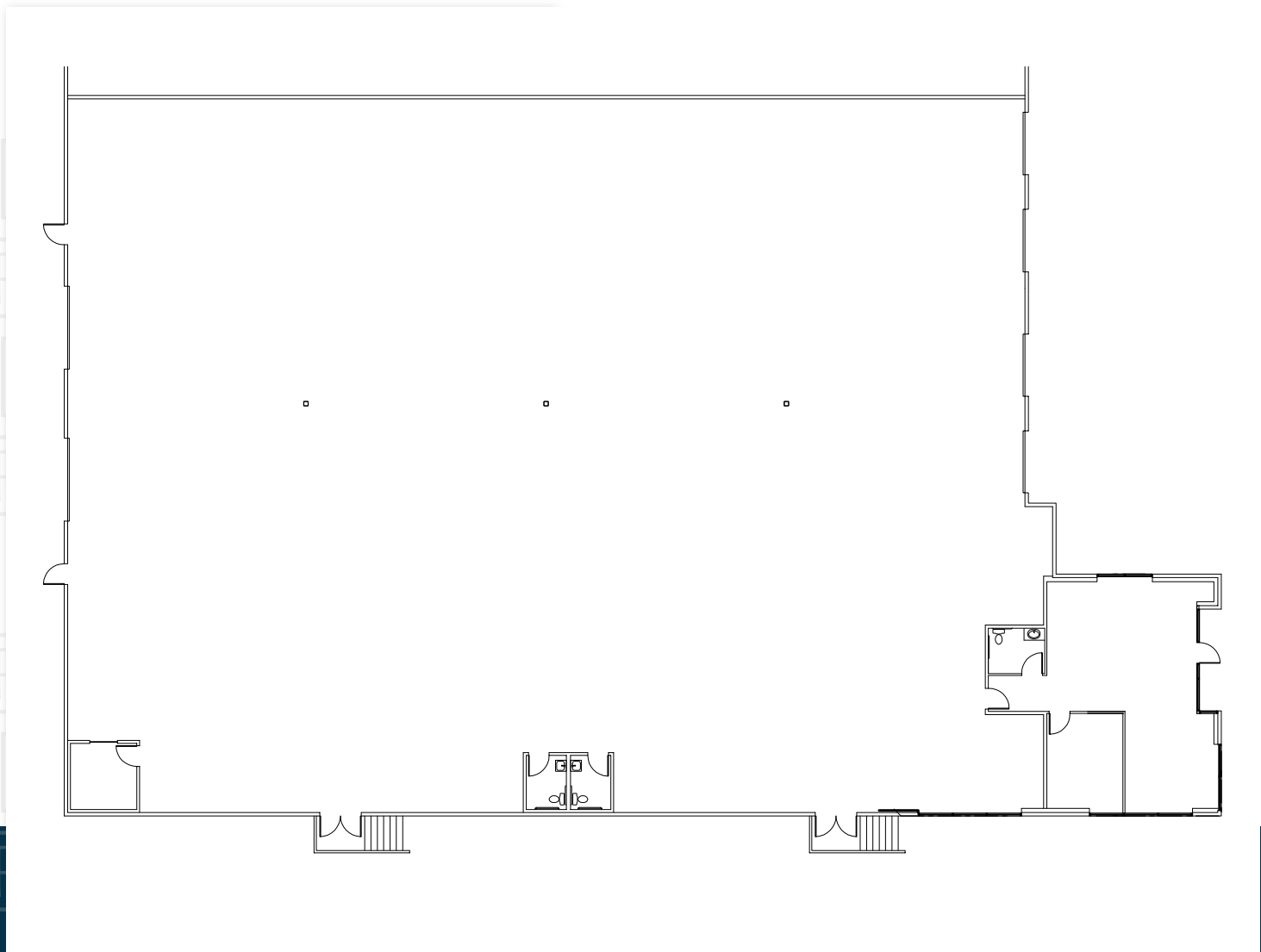


Leasing by:



dpillc.com

# DPI EAST PARK



## Contact Kidder Mathews for more info:

Travis Stanaway  
206-248-6526  
travis.stanaway@kidder.com

Matt Murray  
206-248-6541  
matt.murray@kidder.com

Dane Dahline  
206-248-6519  
dane.dahline@kidder.com

Lisa Rowe  
206-777-5122  
lisar@davispropertiesllc.com

The information provided in this document should be independently verified on any material matter represented herein.

Owned & Operated by:



Leasing by:



dpillc.com