



# For Lease

## Everett Mall Office Park I

1010 SE Everett Mall Way • Everett, WA

### Suite 200-A

- 1,928 RSF
- \$18.75/RSF/Yr, NNN
- NNNs: \$11.43/RSF (includes janitorial; \$9.28/RSF without)
- Available February 1, 2025

### Property Features

- Prime location with excellent access to I-5
- Retail and restaurant amenities within walking distance
- 4 parking stalls/1,000 RSF

### DAVID GUNTHER

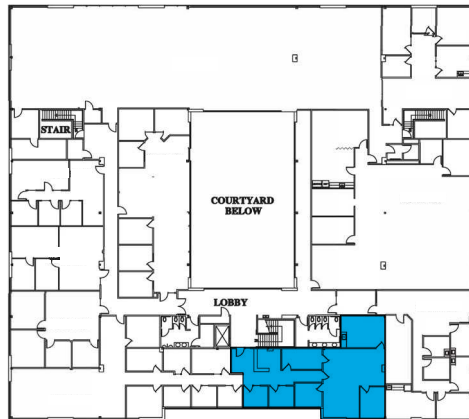
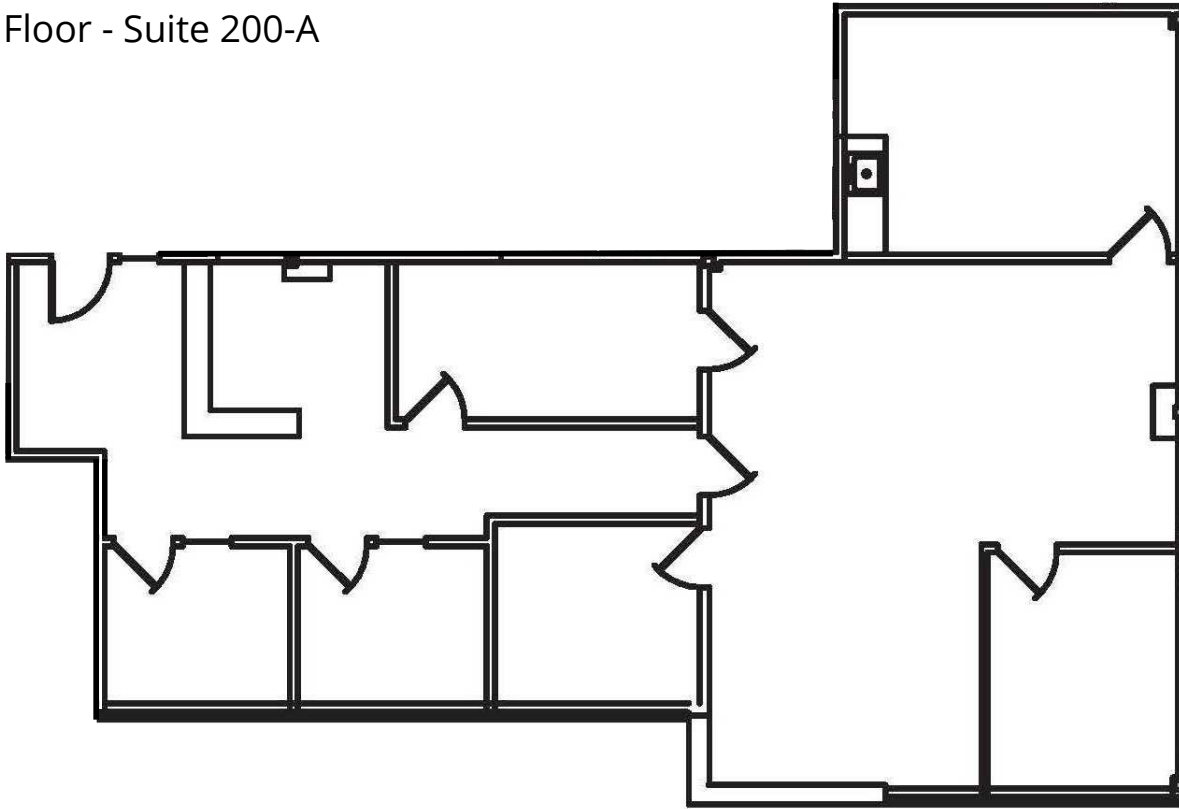
Vice President  
+1 206 745 9713  
david.gunther@colliers.com

### COLLIERS

601 Union Street, Suite 5300  
Seattle, WA 98101  
www.colliers.com

# For Lease - Everett Mall Office Park I

Second Floor - Suite 200-A



## DAVID GUNTHER

Vice President  
+1 206 745 9713  
david.gunther@colliers.com

## COLLIERS

601 Union Street, Suite 5300  
Seattle, WA 98101  
www.colliers.com