

**FOR LEASE**

Owned and Operated by  **LINK**

# HARBOUR REACH BUSINESS PARK

4620 Campus Place, Mukilteo, WA

Bldg. A, Suite 100: 14,770 SF  
Bldg. B, Suite 200: 20,000 SF



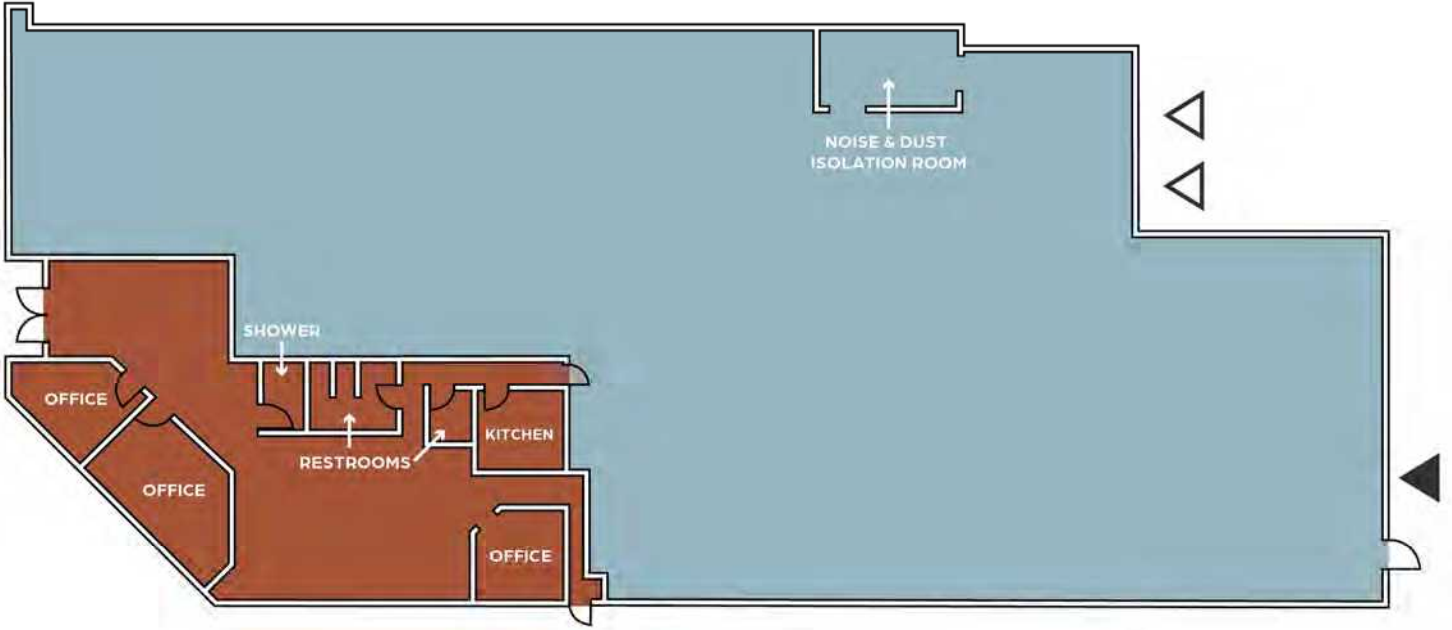
## LEASING INFO & CONTACT

Connor Gilchrist (425) 274-4286 / [gilchrist@broderickgroup.com](mailto:gilchrist@broderickgroup.com)  
Rawley Holmberg (425) 274-4284 / [holmberg@broderickgroup.com](mailto:holmberg@broderickgroup.com)

**BRODERICK**  
• GROUP •

This is not an offer or acceptance of an offer to lease space. A lease will only be offered or made in a written agreement signed by landlord. No representation or warranty of any kind is made by landlord unless set forth in a written definitive lease executed by the landlord.

BUILDING A, SUITE 100



**KEY**

- △ Dock high door
- ▲ Grade level door



**SPACE FEATURES**

Date Available:	4/1/2025
Total SF:	14,770 SF
Office SF:	2,795 SF
Clear Height:	24'

Loading:	2 DH, 1 GL
Power:	250 amps, 277/480V, 3-phase
Parking:	Ample parking



BUILDING B, SUITE 200



SCAN TO VIEW  
VIRTUAL TOUR



KEY

-  Dock high door
-  Grade level door



SPACE FEATURES

Date Available: Available Now

Total SF: 20,000 SF

Office SF: 2,186 SF

Clear Height: 24'

Loading: 4 DH, 3 GL

Power: 450 amps, 277/480V, 3-phase

Parking: Ample parking



**Harbour Point Shopping Center**

- QFC
- Subway
- MOD Pizza
- Big Chicken
- Jack in the Box
- Chase Bank

**Paine Field Airport**

- Mukilteo's Speedway Café
- Jersey Mike's
- McDonald's

**HARBOUR REACH BUSINESS PARK**

